



Manufacturer
Of
Architectural
And
Commercial
Grade
Windows,
Curtain Walls,
Entrances,
And
Storefronts

EFCO CORPORATION
1000 COUNTY RD
MONETT, MO 65708
800.221.4169



System 945 ***Thermal Storefront Ribbon System***

Configurations Screw Spline

This thermally improved Quick Set™ system is an economical stock length system for field fabrication. Since it has minimal fabrication and installation steps, it provides labor savings over other systems. System 945 is compatible with EFCO entrances.

Features

Thermally improved frames

All joints and horizontal mullions are square cut

Unique door jamb is notched to allow the sill flashing to butt directly to a solid surface

Optional face cap

Silicone structural glazed vertical mullions used with horizontal mullions designed to accept a full-length cover that spans the vertical mullions

Shallow intermediate horizontals used with interior blinds (optional)

All fasteners are #12 screws

90° inside and outside corner mullions

Accepts standard-sized steel stock bar at ¼" x 2 ¾" or ¼" x 2 ½" (when required)

Accommodates up to 1" glazing*

Inside (standard) or outside glazing (optional)

Anodized or painted finishes available

Benefits

Enhanced thermal performance

Facilitates shop fabrication of "ladders" that can be transported as a unit to job sites for quick installation

Allows quick fabrication in the field

Provides a watertight seal at the sill flashing
Compatible with 1 ¾" and 2" doors

Provides ribbon wall appearance
Individual interior and exterior finish capability

Gives horizontal-through appearance

Allows applied blinds to pass the intermediate horizontal without interference

Strengthens system to allow transportation of ladders without damage to joinery system

Accommodates multifaceted elevations

Eliminates the cost of custom steel fabrication

Expands design and energy savings options

Allows flexibility of construction methods

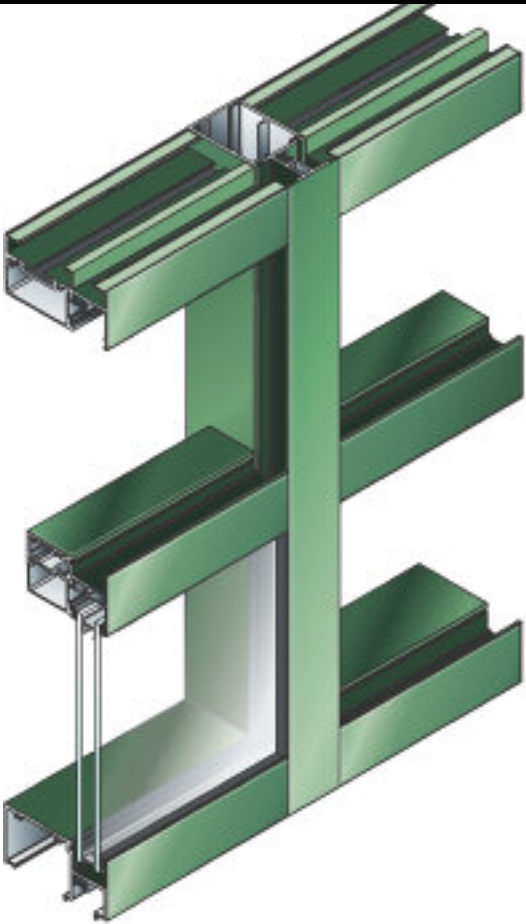
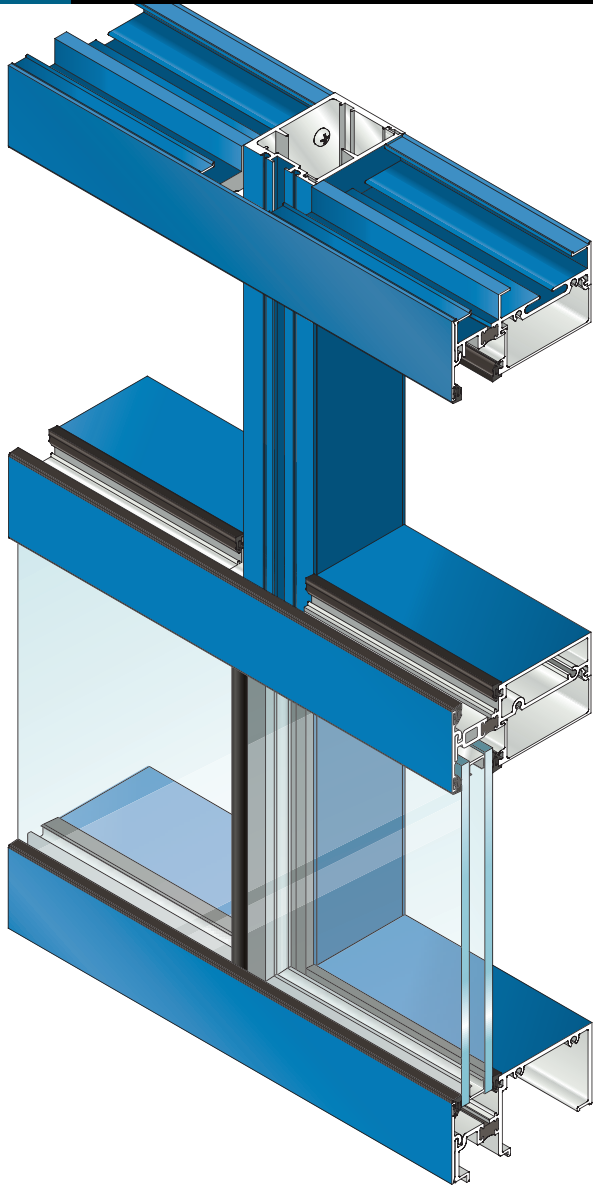
Unlimited options to answer economic and aesthetic concerns

* 1/4" glazing requires adaptors



System 945

Thermal Storefront Ribbon System



Performance Data

System 945 Quick Set™	
Air Infiltration	<.06 cfm/sf @ 6.24 psf
Water	No Leakage @ 12.0 psf
Structural	See wind load charts
CRF-Frame (1503-98)	70 ^F
CRF-Glass (1503-98)	74 ^F
U-Value (1503-98)	.47 ^E
U-Value (NFRC-102)	.44 ^E

A = Estimated values and/or designations
B = Non-standard size or configuration
C = Dual glazed
D = 1" Insulated - 1/4" clear, 1/2" air, 1/4" clear
E = 1" Insulated - 1/4" clear (Low Emissivity), 1/2" air, 1/4" clear
F = 1" Insulated - 1/4" clear (Low Emissivity), 1/2" argon, 1/4" clear
G = 1" Insulated - 1/4" clear, 1/2" air, 1/4" clear (Low Emissivity)

Glazing

System 945 Quick Set™ is a dry glazed system. Varying gaskets are used depending on the system configuration required. Glazings of 1/4" and 1" infill panels are accommodated.

System 945 Quick Set™ Glazing Chart	Polycarbonate			Glass or Panel												
	3/16"	1/4"	5/16"	3/16"	1/4"	1/4"***	5/16"	7/16"	1/2"	9/16"	5/8"	3/4"	7/8"	15/16"	1"	1-1/16"
Monolithic Glass		C			C	C										
Insulated Glass															A	

***-Laminated Glass
Thickness
A -Available Glazing Option
C -Adaptor and/or gasket
required
blank - N/A

System 945

Thermal Storefront Ribbon System



Frame Construction

Members are extruded 6063-T6 aluminum alloy with a nominal wall thickness of .080". Corner construction employs a screw spline method and utilizes #12 fasteners. Frame members have a face sight line of 2 1/4" and frame depth of 4 1/2". An optional blind pass intermediate horizontal that allows applied blinds to pass through without horizontal interference is available. Optional strap anchors at the head members help facilitate quicker installation of the system. See Illustration 1.

Door Frame Construction

System 945 offers integral entrance frames in screw spline construction. Members are nominally .080" in thickness. A standard entrance header is available as well as an entrance header that is designed for use with concealed overhead closers. Transom lite glazing is accommodated through applied glass stops and glazing beads. Door stops are also applied so the 945 system will accept varying thickness' of doors.

Weather Stripping

All entrance frames are weather-stripped with EPDM bulb gasket.

Glazing

System 945 Quick Set™ is a dry glazed system. Varying gaskets are used depending on the system configuration required. Glazings of 1/4" and 1" infill panels are accommodated.

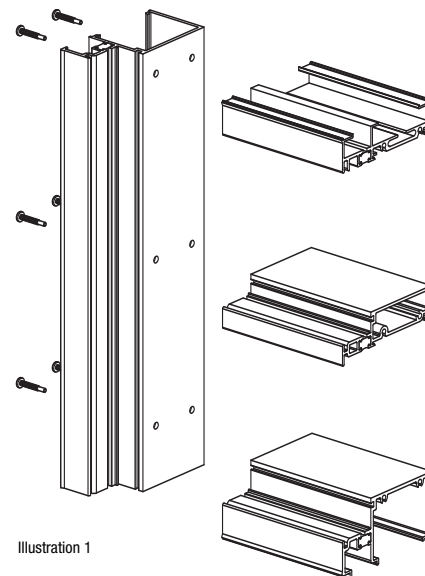
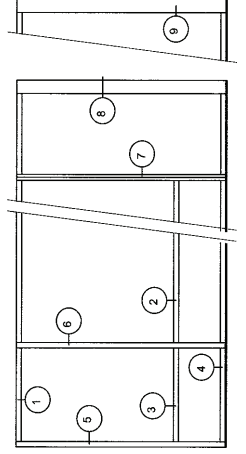
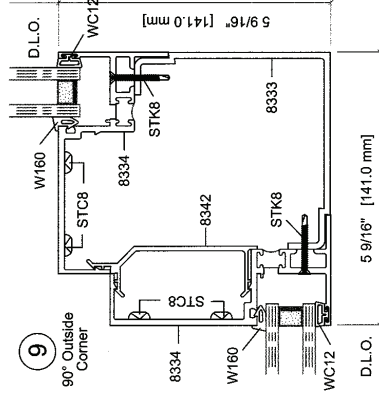
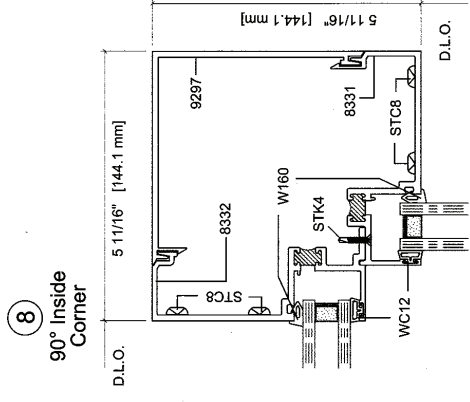
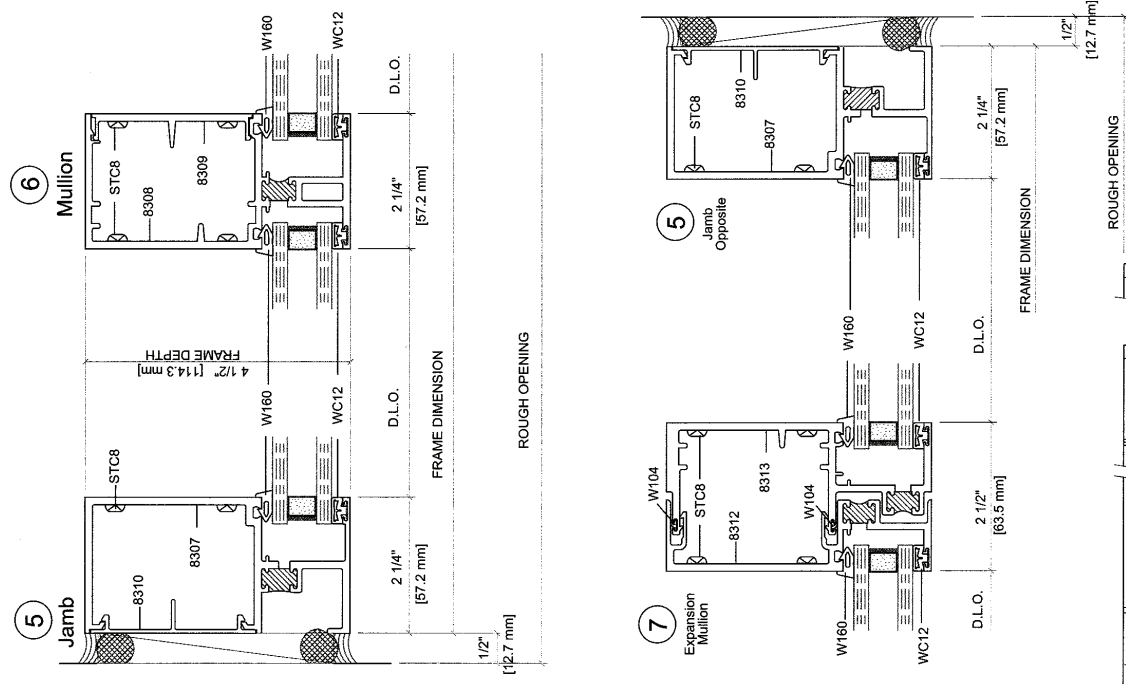
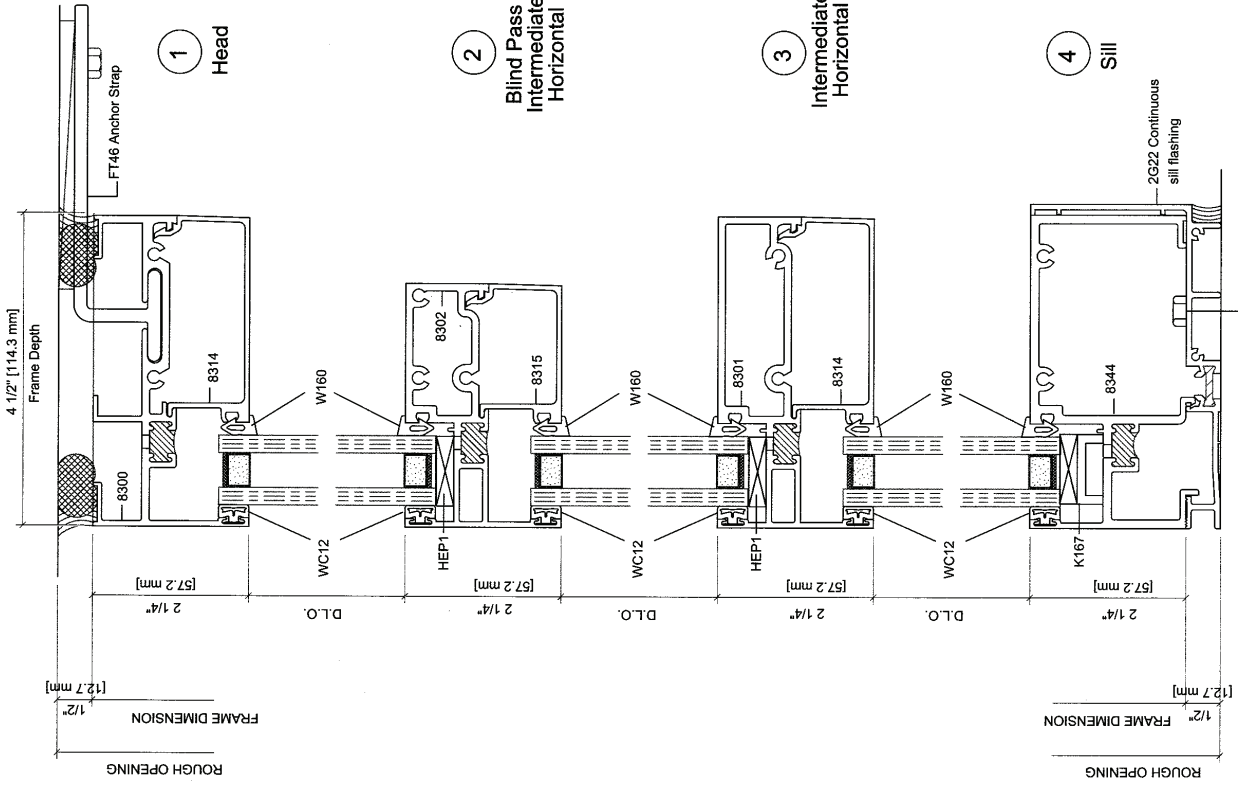
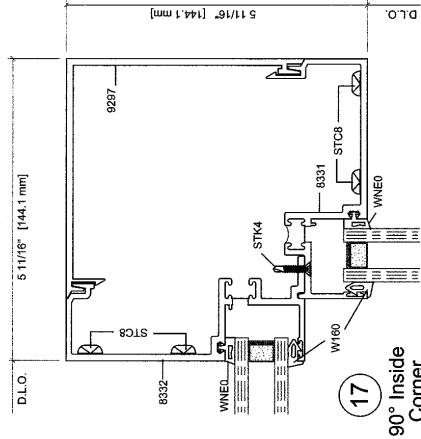
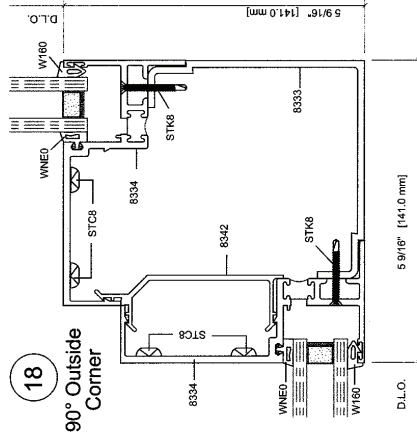
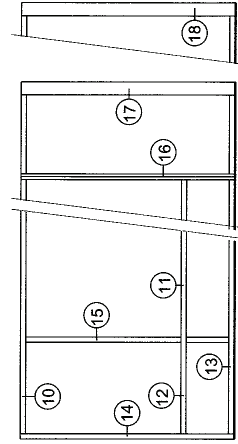
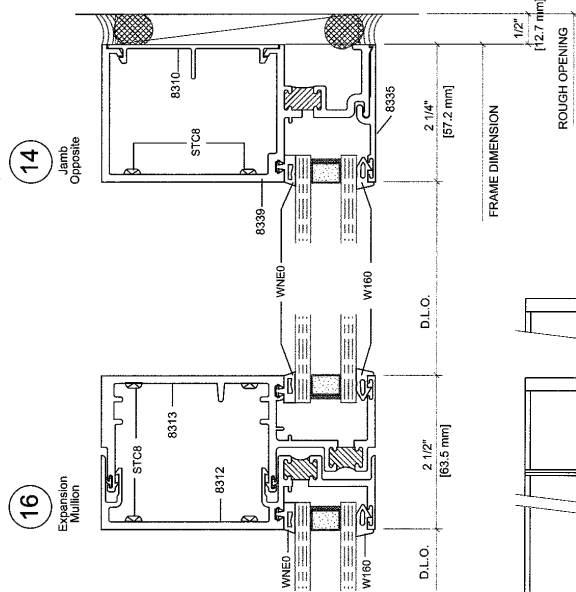
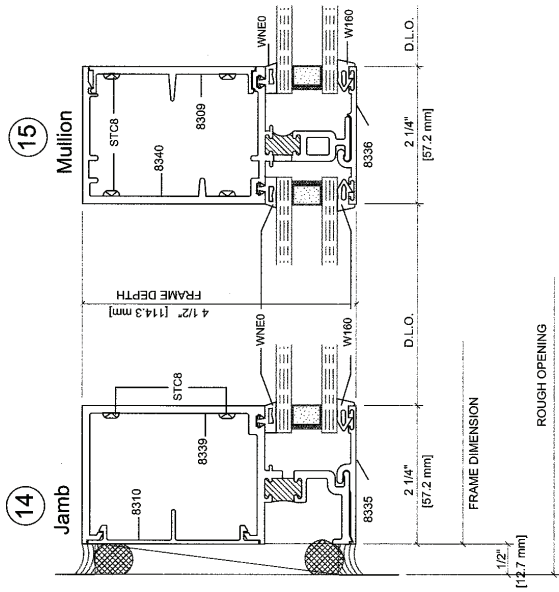
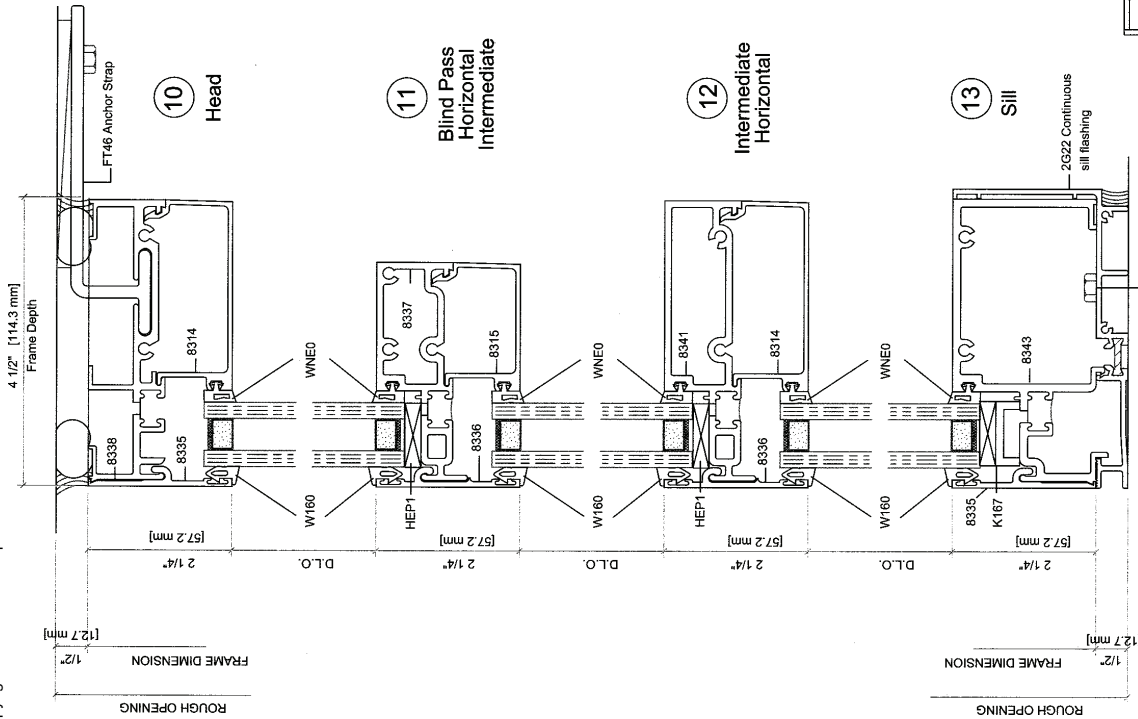
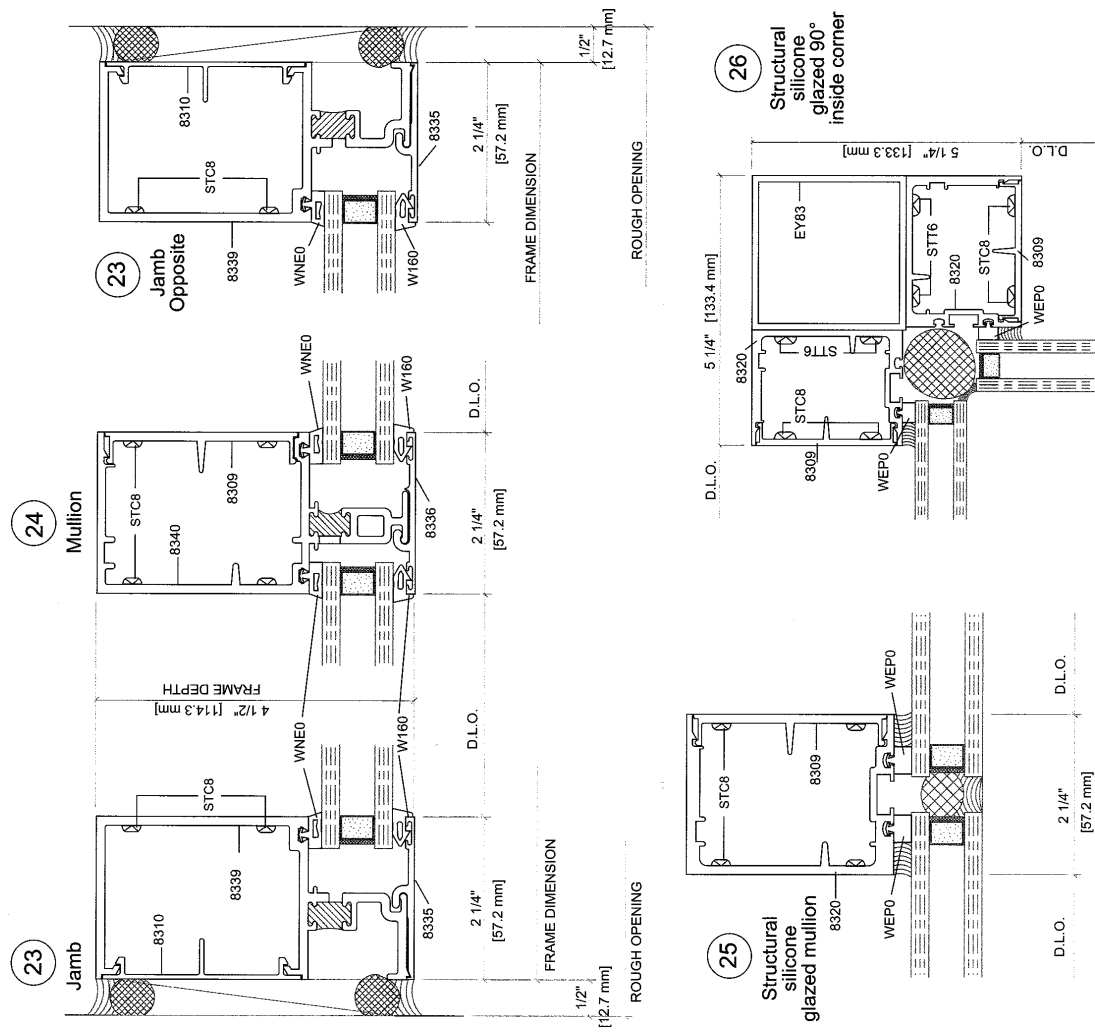
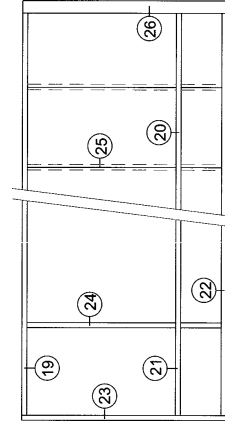


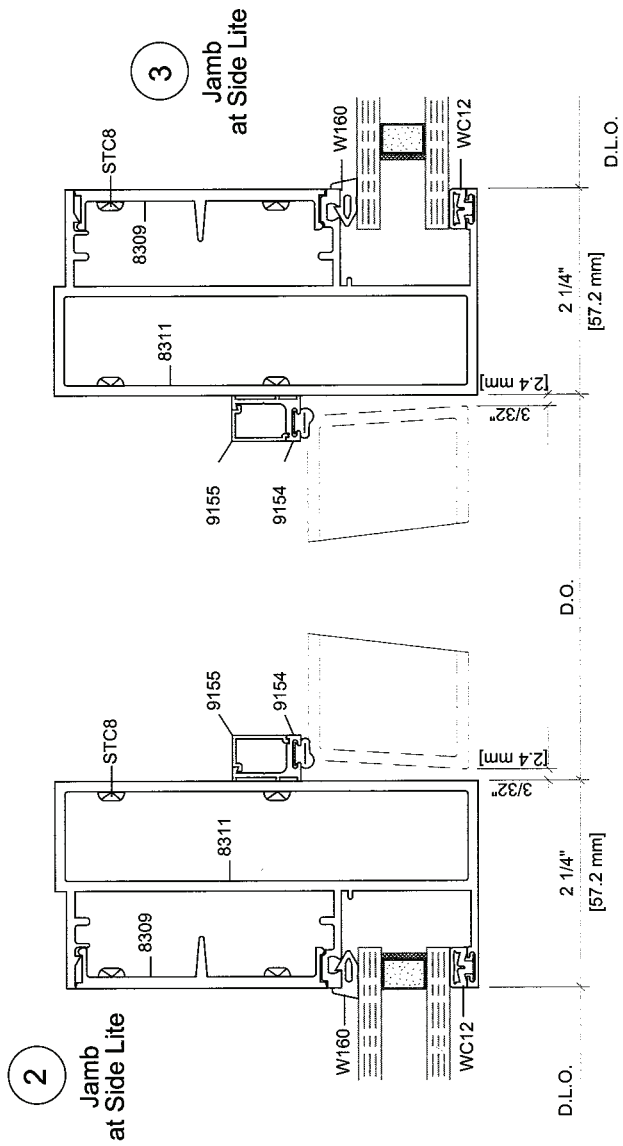
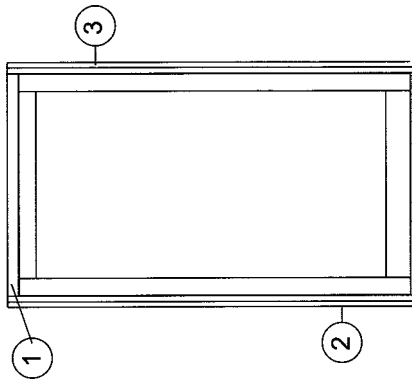
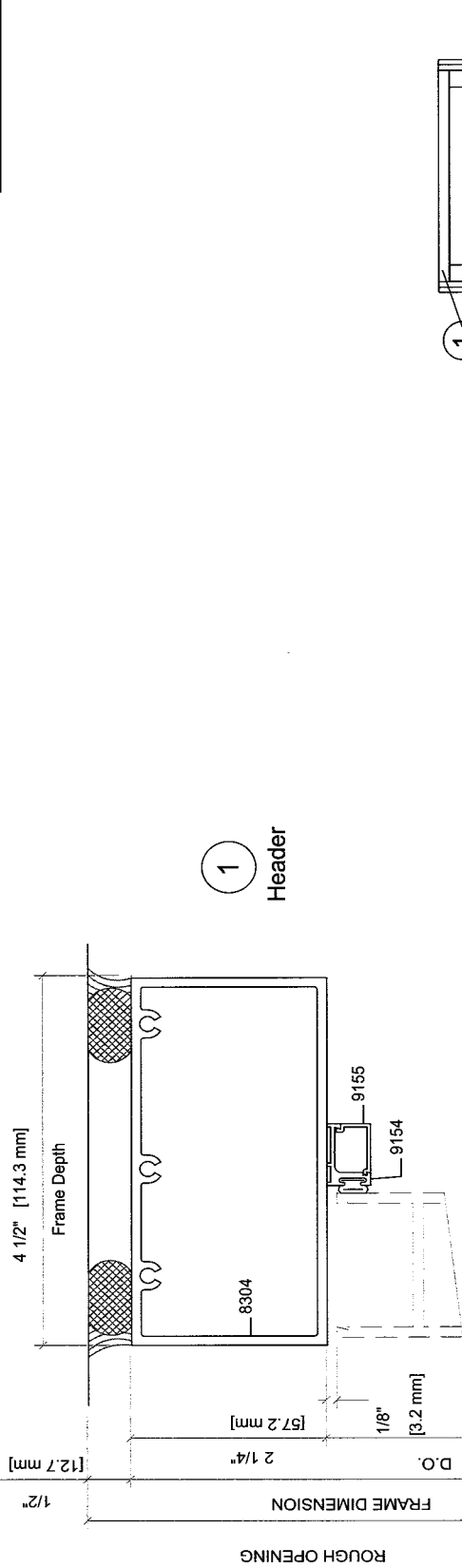
Illustration 1

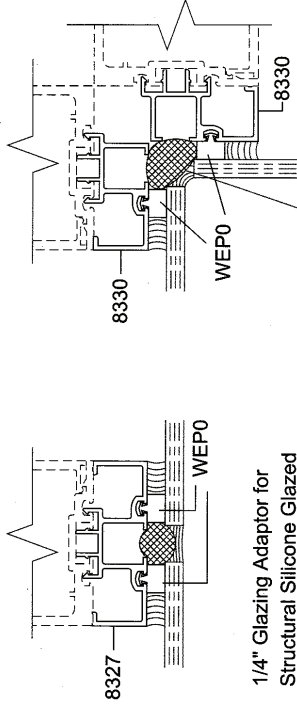
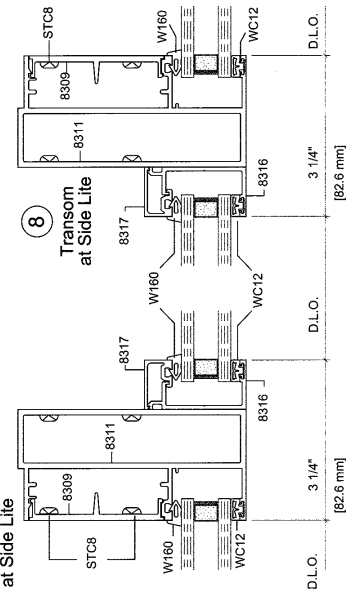
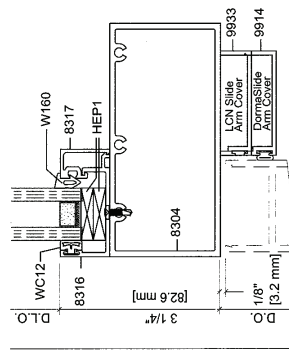
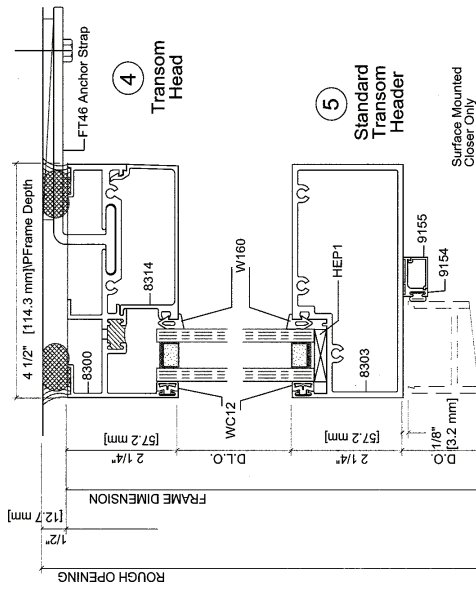






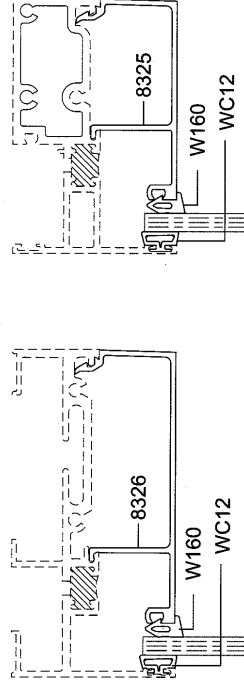
945 Door Frame Without Transom





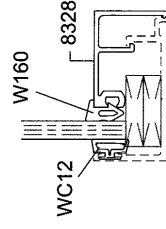
1/4" Glazing Adaptor for Structural Silicone Glazed Mullions

1/4" Glazing Adaptor for Structural Silicone Glazed 90° Corners

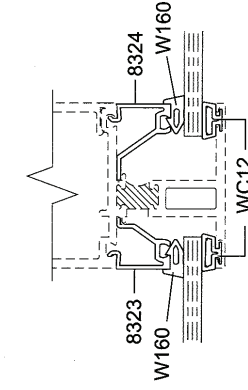


1/4" Glazing Bead for Head and Intermediate Horizontals

1/4" Glazing Bead for Blind Pass Intermediate Horizontals



1/4" Glazing Bead for Door Transom Glass Stops



1/4" Glazing Adaptors for Deep and Shallow Pocket Horizontals and Verticals

"Z" Shaped Anchor Strap for Heads