



Series 403-I **2 1/4" x 4 1/2" Thermal Storefront Framing**

Configurations Shear Block • Screw Spline

Series 403-I is a thermally isolated storefront framing system that utilizes EFCO's E-Strut™ thermal isolators. These thermal isolators provide outstanding thermal performance and allow dual finish capability. 403-I is compatible with Thermastile™ doors. This system is designed with two fabrication and erection options, providing even greater versatility.

Manufacturer
Of
Architectural
And
Commercial
Grade
Windows,
Curtain Walls,
Entrances,
And
Storefronts

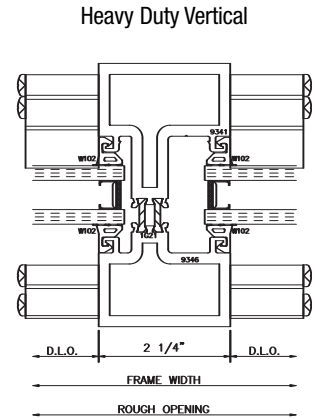
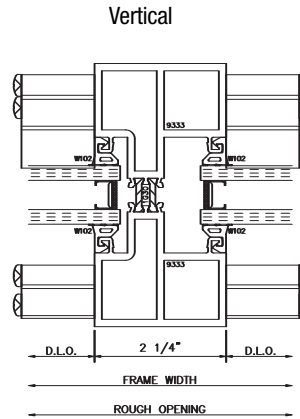
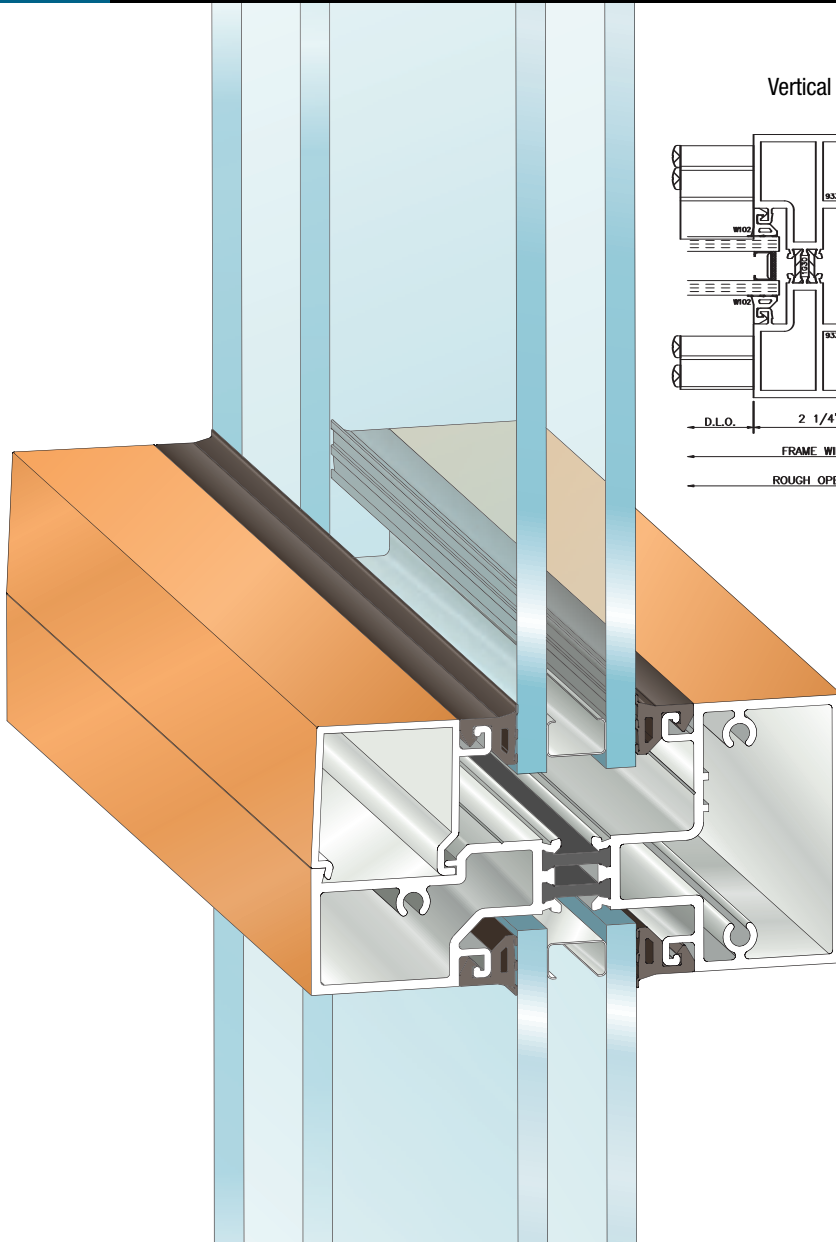
Features

Benefits

E-Strut™ thermal isolator	Improves U-Value performance Dual finish capability Completely eliminates dry shrinkage
Screw spline construction	Allows assembly of sections prior to installation Decreases installation time
Shear block construction	Ability to erect on the job site
135° inside and outside corners	Multifaceted elevations Design flexibility
Uniform glazing gasket is used for exterior and interior	Allows optimized use of gasket Simplifies ordering and installation
Door frame members use thermal struts as a thermal break	Dual finish capability
Threshold uses thermal struts as thermal break	System thermal barrier is continuous
Horizontal stacking members	Increases configuration options
Various height intermediate horizontals and sills	Ability to maintain desired sight line
Accommodates up to 1 1/8" glazing	Expands design and energy savings options
Accessory options include subframe, mullions, perimeter adaptors, etc.	Increased product versatility
Anodized or painted finishes available	Unlimited options to answer economic and aesthetic concerns

Series 403-I

2 1/4" x 4 1/2" Thermal Storefront Framing



Performance Data

System 403-I Storefront Screw Spline Framing	
Air Infiltration	<.06 cfm/sf @ 6.24 psf
Water	No Leakage @ 12.0 psf
Structural	See wind load charts
CRF-Frame (1503-.1)	61 ^D
CRF-Glass (1503.1)	59 ^D
U-Value (1503.1)	.64 ^D

System 403-I Storefront Shear Block Framing	
Air Infiltration	<.06 cfm/sf @ 6.24 psf
Water	No Leakage @ 12.0 psf
Structural	See wind load charts
CRF-Frame (1503.1)	61 ^{A, D}
CRF-Glass (1503.1)	59 ^{A, D}
U-Value (1503.1)	.64 ^{A, D}

A = Estimated values and/or designations
 B = Non-standard size or configuration
 C = Dual glazed
 D = 1" Insulated - 1/4" clear, 1/2" air, 1/4" clear
 E = 1" Insulated - 1/4" clear (Low Emissivity), 1/2" air, 1/4" clear
 F = 1" Insulated - 1/4" clear (Low Emissivity), 1/2" argon, 1/4" clear
 G = 1" Insulated - 1/4" clear, 1/2" air, 1/4" clear (Low Emissivity)

Glazing

System 403-I can be inside or outside glazed with extruded aluminum, snap-in glazing bead. Glass is "dry glazed" with top load EPDM gasket. Glazings of 3/16" to 1-1/16" infill panels are accommodated. See Glazing Chart below for exact size.

System 403-I Glazing Chart	Polycarbonate			Glass or Panel													
	3/16"	1/4"	5/16"	3/16"	1/4"	1/4"***	5/16"	7/16"	1/2"	9/16"	5/8"	3/4"	7/8"	15/16"	1"	1-1/16"	
Monolithic Glass	C	C	C	C	C	C	C										
Insulated Glass												C		C	A	C	

** - Laminated Glass
 Thickness
 A - Available Glazing Option
 C - Adaptor and/or gasket
 required
 blank - N/A

Series 403-I 2 1/4" x 4 1/2" Thermal Storefront Framing



Frame Construction

The frames have a sightline on 2 1/4" and a depth of 4 1/2", the nominal material wall thickness is .080". Members are extruded 6063-T6 aluminum alloy. Corner construction employs screw spline or shear block method. See Illustration 1 & 2.

Door Frames

System 403-I offers integral entrance frames as a part of the entrance framing system. Members are nominally .080" in thickness.

Weather Stripping

All entrance frames are weather-stripped with EPDM bulb gasket.

Thermal Barrier

All frames are thermally isolated with two thermal struts consisting of glass reinforced polyamide nylon, mechanically crimped in raceways extruded in the exterior and interior extrusions.

Glazing

System 403-I can be inside or outside glazed with extruded aluminum, snap-in glazing bead. Glass is "dry glazed" with top load EPDM gasket. Glazings of 3/16" to 1 1/16" infill panels are accommodated. See Glazing Chart for exact size.

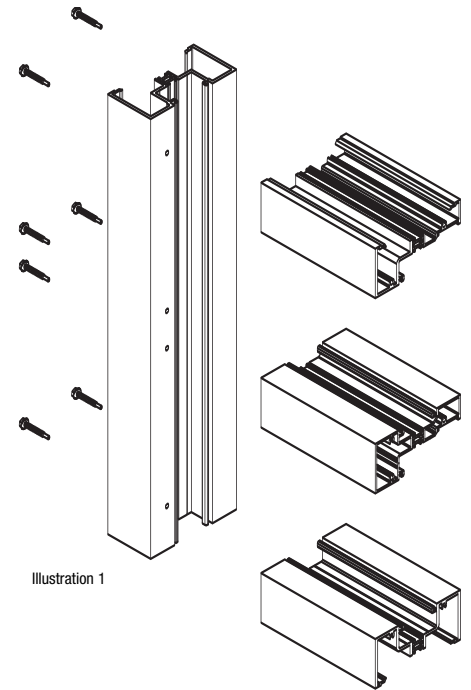


Illustration 1

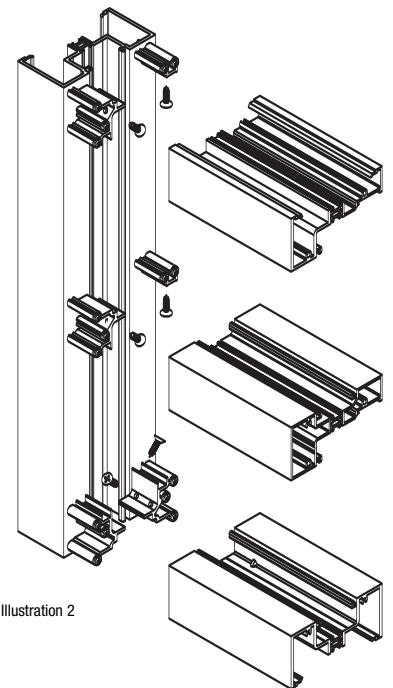
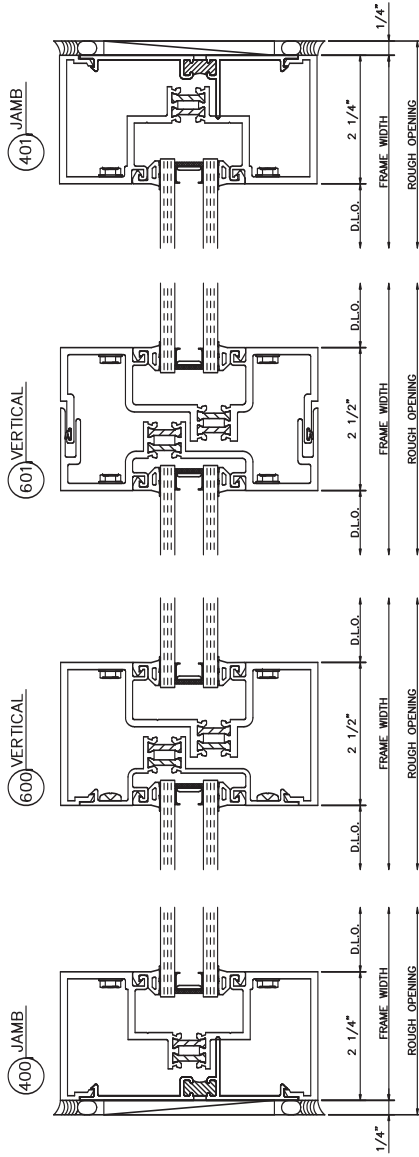
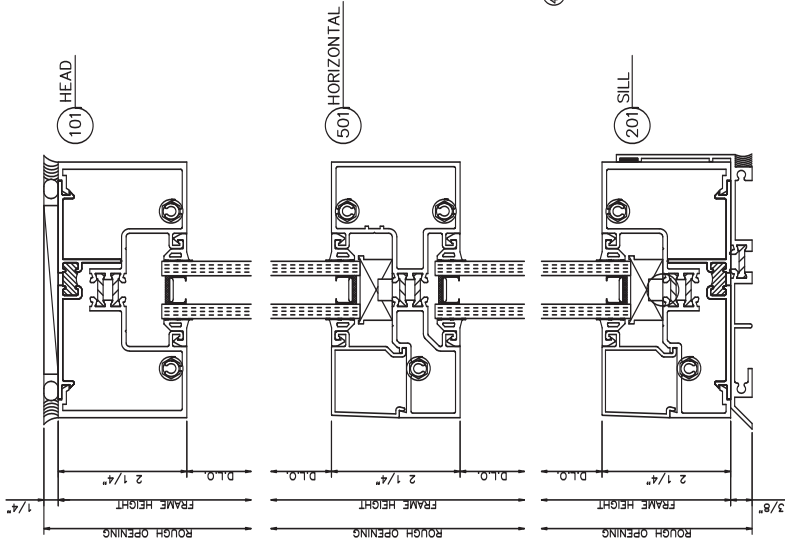
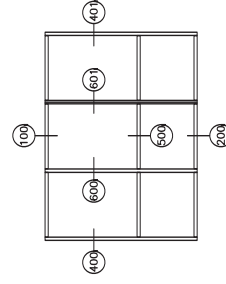
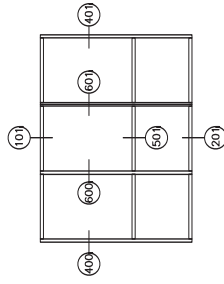
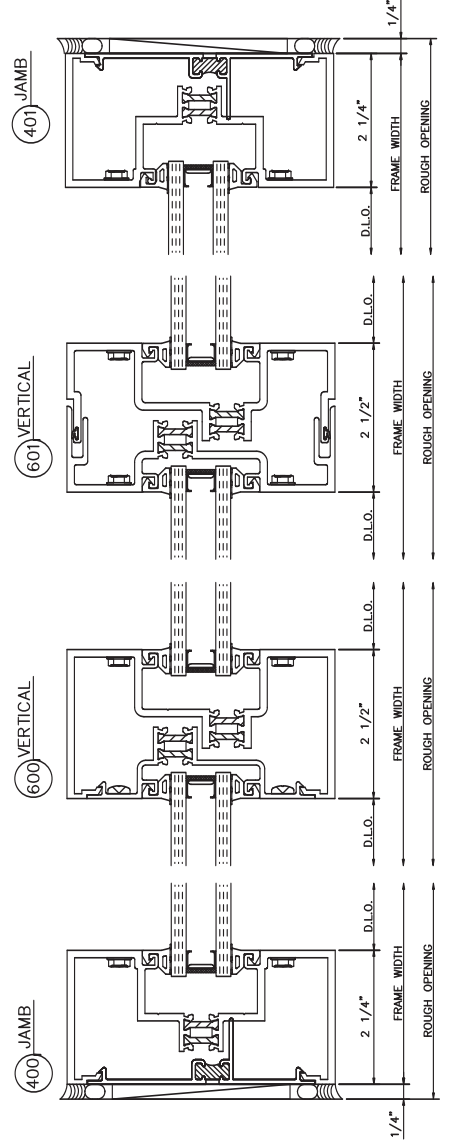
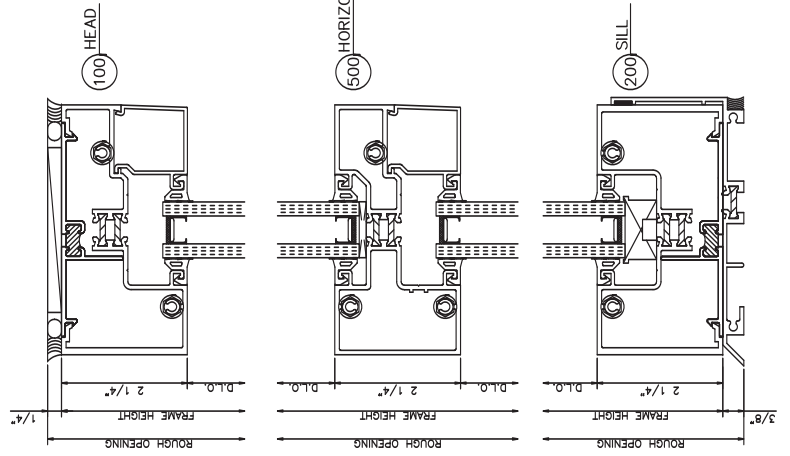


Illustration 2

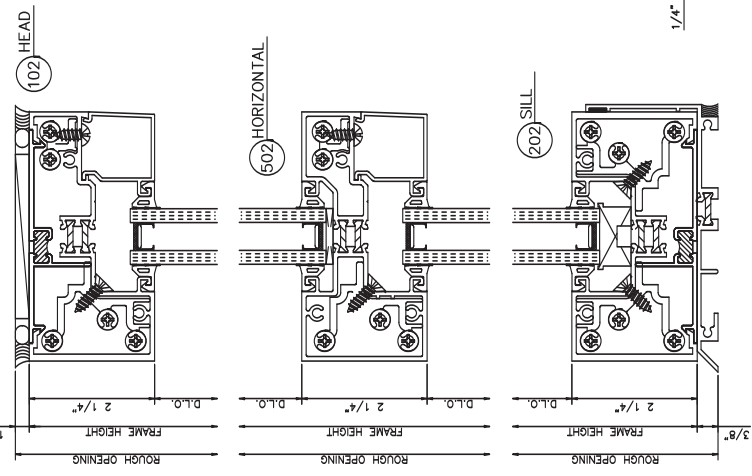
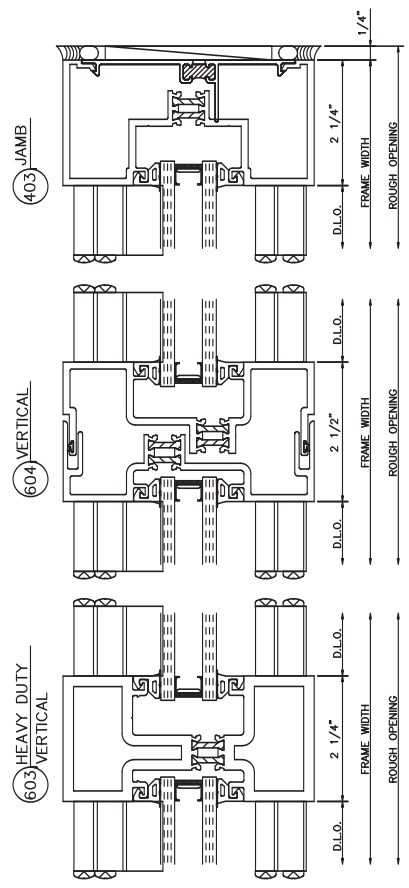
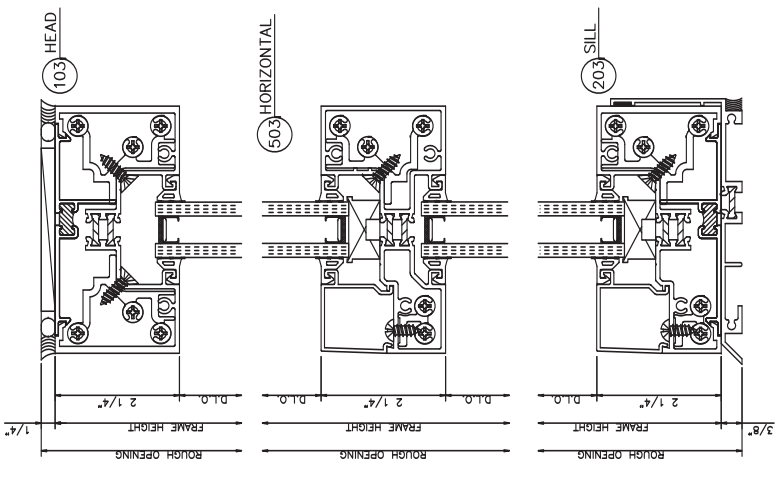
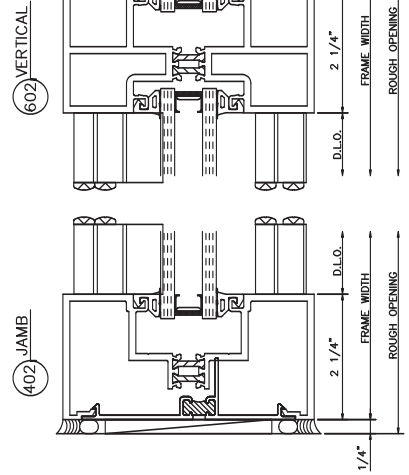
403-I Screw Spline Outside Glazed
2 1/4" x 4 1/2"



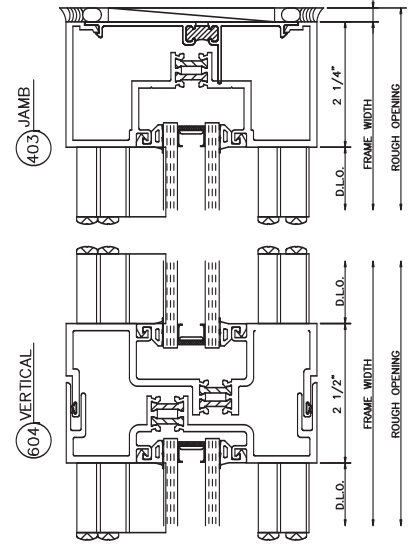
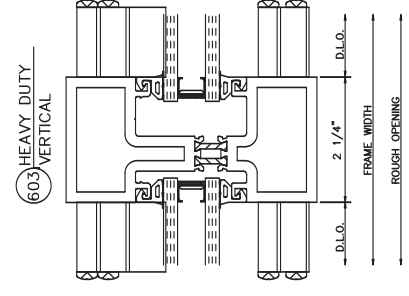
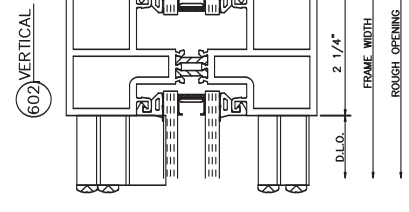
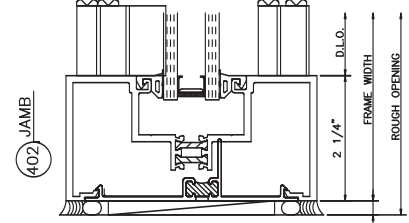
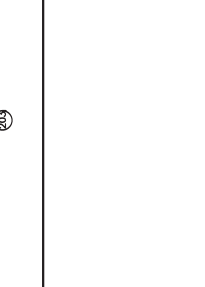
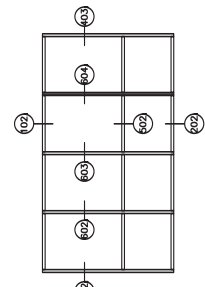
403-I Screw Spline Inside Glazed
2 1/4" x 4 1/2"



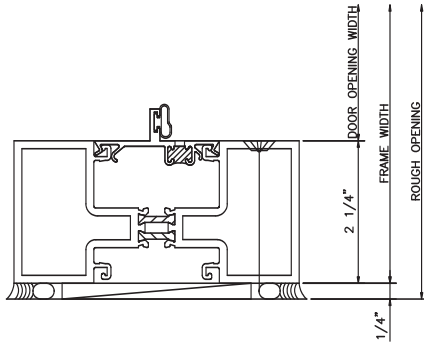
403-I Shear Block Outside Glazed
2 1/4" x 4 1/2"



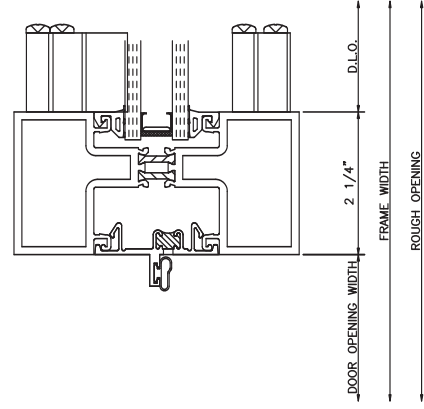
403-I Shear Block Inside Glazed
2 1/4" x 4 1/2"



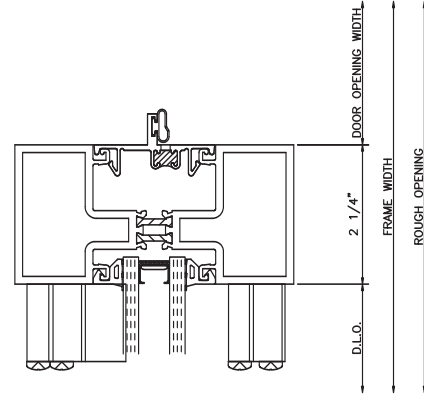
801 JAMB



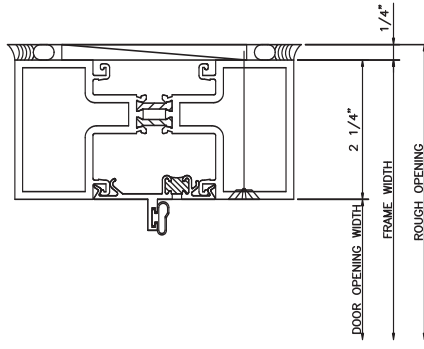
821 JAMB



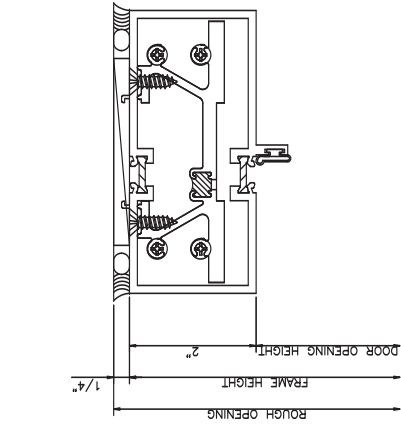
800 JAMB



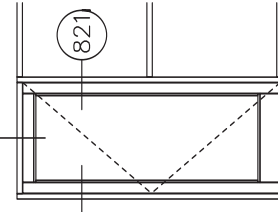
820 JAMB



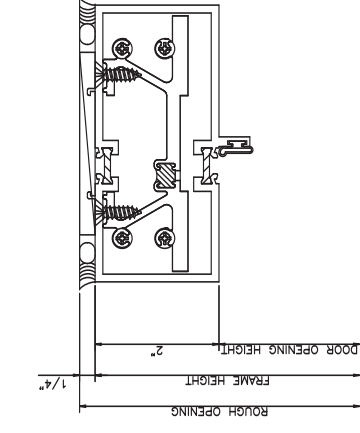
801



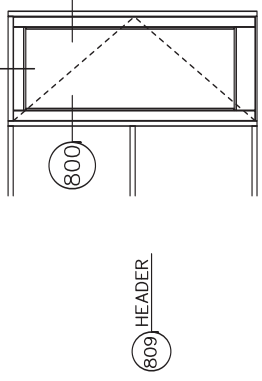
809



800



820



403-I Door Frames Outside Glazed

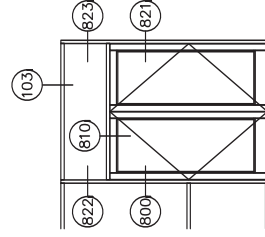
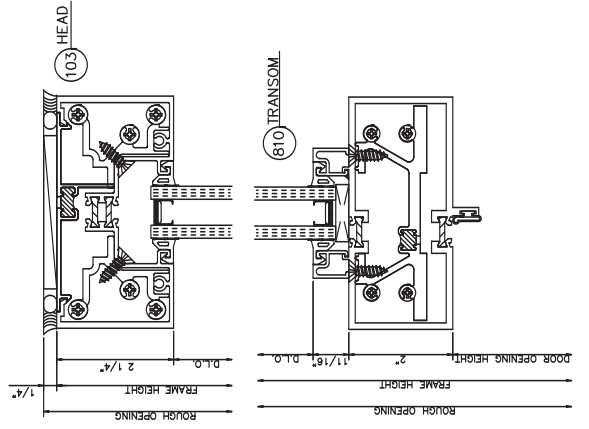
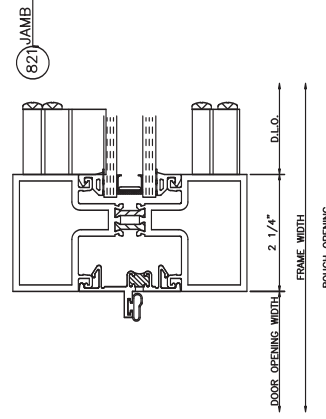
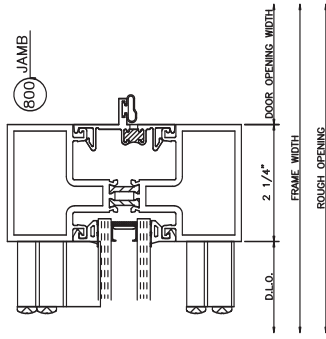
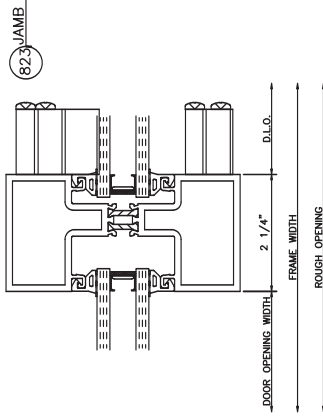
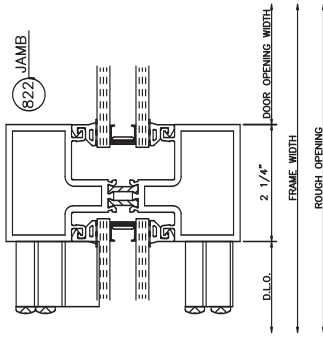
Single Acting • Left Swing

403-I Door Frames Outside Glazed

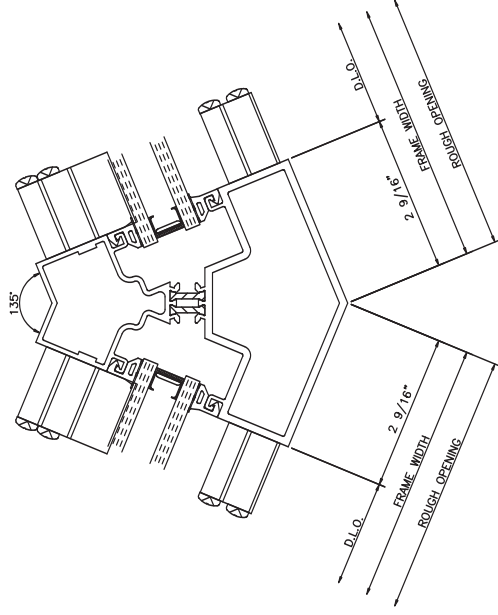
Single Acting • Right Swing

403-I Double Door Frames Outside Glazed

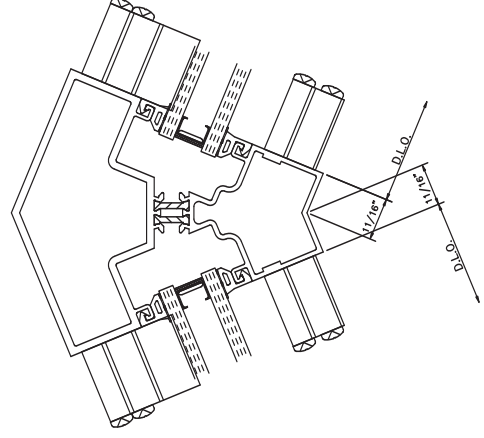
Single Acting • Left & Right Swing



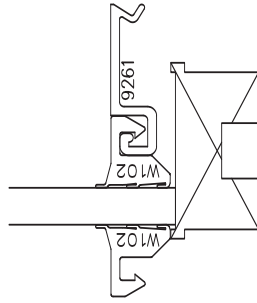
700 135° OUTSIDE CORNER



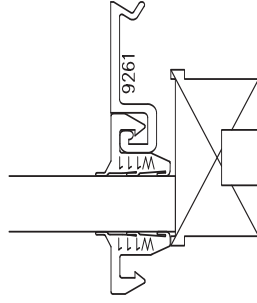
701 135° INSIDE CORNER



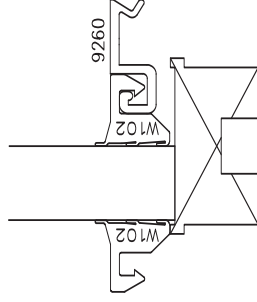
1/4" GLAZING



3/8" GLAZING



1/2" GLAZING



5/16" GLAZING

