



Series 403 **2" x 4 1/2" Thermal Storefront Framing**

Configurations Shear Block • Screw Spline

This economical flush glaze system is available in both shear block and screw spline fabrication methods. Series 403 Storefront can accommodate all standard 1 3/4" Entrances as well as WV410 vents. This series is thermally improved, enhancing energy savings potential. Vertical mullions will accept steel reinforcement to enhance structural performance.

Manufacturer
Of
Architectural
And
Commercial
Grade
Windows,
Curtain Walls,
Entrances,
And
Storefronts

Features

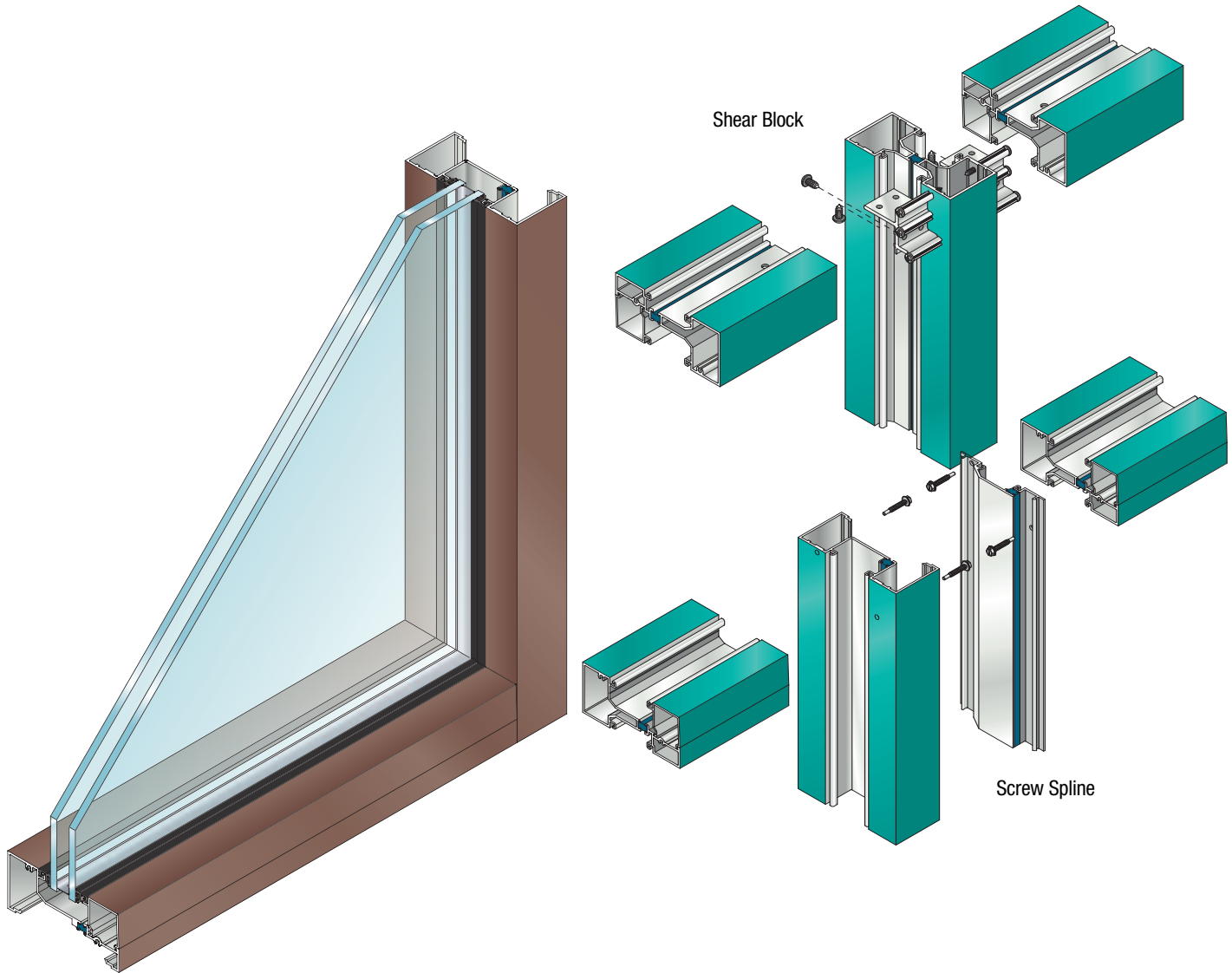
Benefits

Thermally improved frames	Enhanced thermal performance
Screw spline construction	Allows assembly of sections prior to installation Decreases installation time
Shear block construction	Ability to erect on the job site
The optional Roto-Vent™ ventilator	Allows fresh air into the room, yet maintains security
2-way corner mullions (90° & 135°)	Design flexibility
3-way corner mullions (T-mullions)	Multifaceted elevations
0°-15° and 15°-30° variable mullions	Custom applications
Accommodates up to 1 1/8" glazing	Expands design and energy savings options
Uniform glazing gasket is used for exterior and interior	Allows optimized use of gasket Simplifies ordering and installation
Various height intermediate horizontals and sills	Ability to maintain desired sight line
Accessory line of perimeter anchors, pocket fillers, door adaptors, etc.	Increased product versatility
Anodized or painted finishes available	Unlimited options to answer economic and aesthetic concerns

EFCO CORPORATION
1000 COUNTY RD
MONETT, MO 65708
800.221.4169

Series 403

2" x 4 1/2" Thermal Storefront Framing



Performance Data

System 403 Storefront Screw Spline Framing

Air Infiltration	<.06 cfm/sf @ 6.24 psf
Water	No Leakage @ 12.0 psf
Structural	See wind load charts
CRF-Frame (1503-98)	57 ^E
CRF-Glass (1503-98)	70 ^E
U-Value (1503-98)	.44 ^E
U-Value (NFRC-102)	.58 ^E

System 403 Storefront Shear Block Framing

Air Infiltration	<.06 cfm/sf @ 6.24 psf
Water	No Leakage @ 12.0 psf
Structural	See wind load charts
CRF Frame (1503-98)	57 ^{A, E}
CRF-Glass (1503-98)	70 ^{A, E}
U-Value (1503-98)	.44 ^{A, E}
U-Value (NFRC-102)	.41 ^{A, E}

A = Estimated values and/or designations
 B = Non-standard size or configuration
 C = Dual glazed
 D = 1" Insulated - 1/4" clear, 1/2" air, 1/4" clear
 E = 1" Insulated - 1/4" clear (Low Emissivity), 1/2" air, 1/4" clear
 F = 1" Insulated - 1/4" clear (Low Emissivity), 1/2" argon, 1/4" clear
 G = 1" Insulated - 1/4" clear, 1/2" air, 1/4" clear (Low Emissivity)

Glazing

System 403 can be inside or outside glazed with extruded aluminum, snap-in glazing bead. Glass is "dry glazed" with top load EPDM gasket. Glazings of 3/16" to 1-1/16" infill panels are accommodated. See Glazing Chart below for exact size.

System 403 Glazing Chart	Polycarbonate			Glass or Panel												
	3/16"	1/4"	5/16"	3/16"	1/4"	1/4"***	5/16"	7/16"	1/2"	9/16"	5/8"	3/4"	7/8"	15/16"	1"	1-1/16"
Monolithic Glass	C	C	C	C	C	C	C									
Insulated Glass												C		C	A	C

**-Laminated Glass
 Thickness
 A -Available Glazing Option
 C -Adaptor and/or gasket
 required
 blank - N/A

Series 403

2" x 4 1/2" Thermal Storefront Framing



Frame Construction

The frames have a depth of 4 1/2", and the nominal material wall thickness is .080". Members are extruded 6063-T6 aluminum alloy. Corner construction employs screw spline or shear block method. See Illustration 1 & 2.

Door Frames

System 403 offers integral System 402 entrance frames as a part of the entrance framing system. Members are nominally .080" in thickness.

Weather Stripping

All entrance frames are weather-stripped with EPDM bulb gasket.

Thermal Barrier

All frames and vents are thermally isolated using the latest technology in two part, high density polyurethane.

Glazing

Series 403 can be inside or outside glazed with extruded aluminum, snap-in glazing bead. Glass is "dry glazed" with top load EPDM gasket. Glazings of 3/16" to 1 1/16" infill panels are accommodated. See Glazing Chart for exact size.

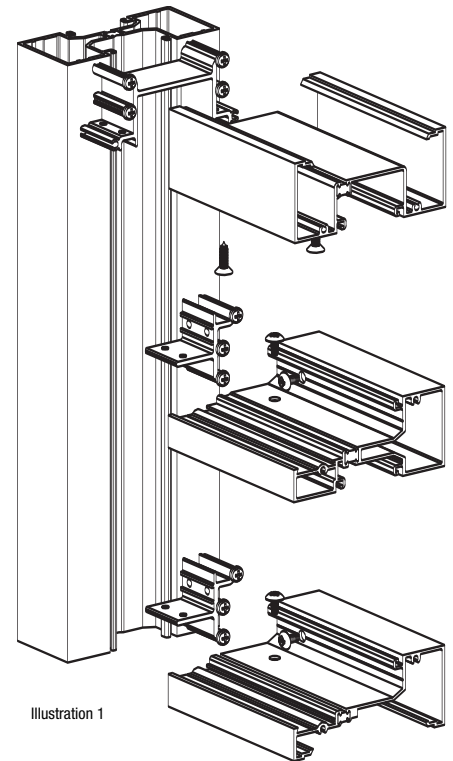


Illustration 1

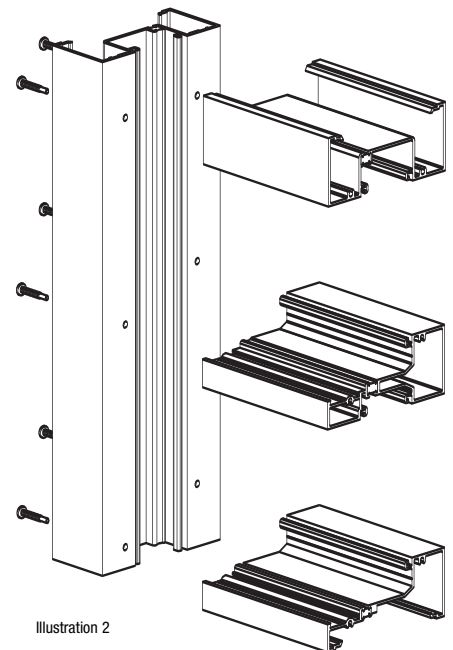
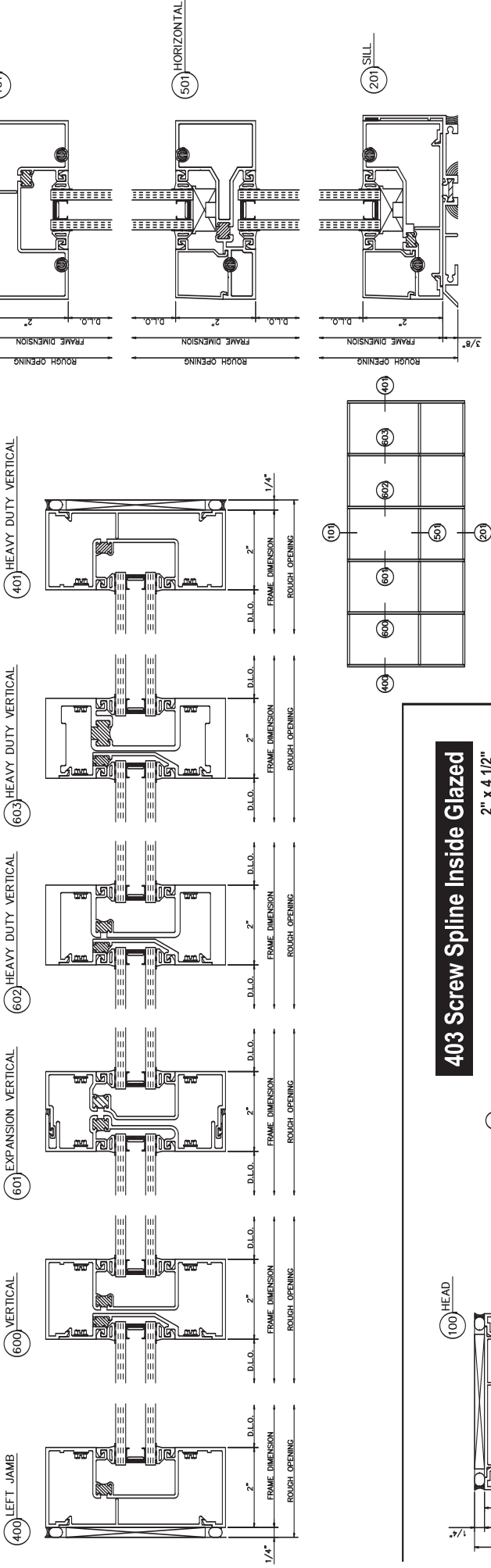


Illustration 2

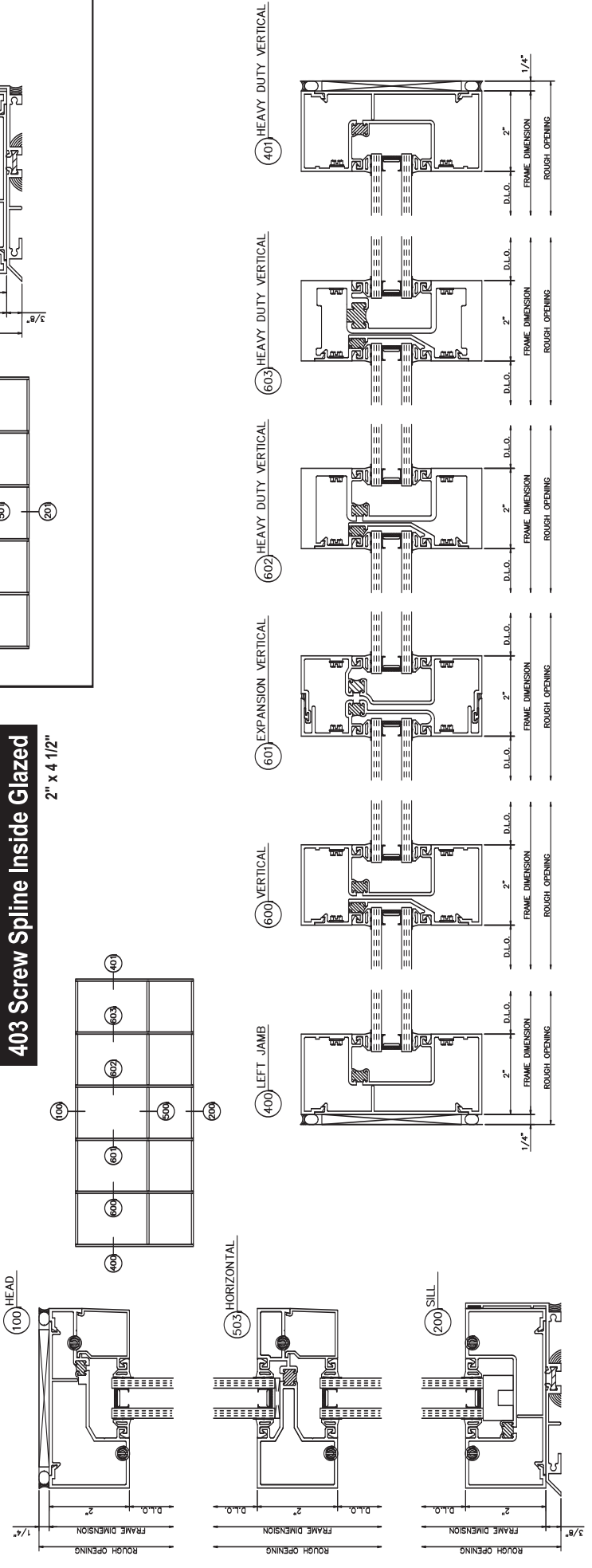
403 Screw Spline Outside Glazed

2" x 4 1/2"



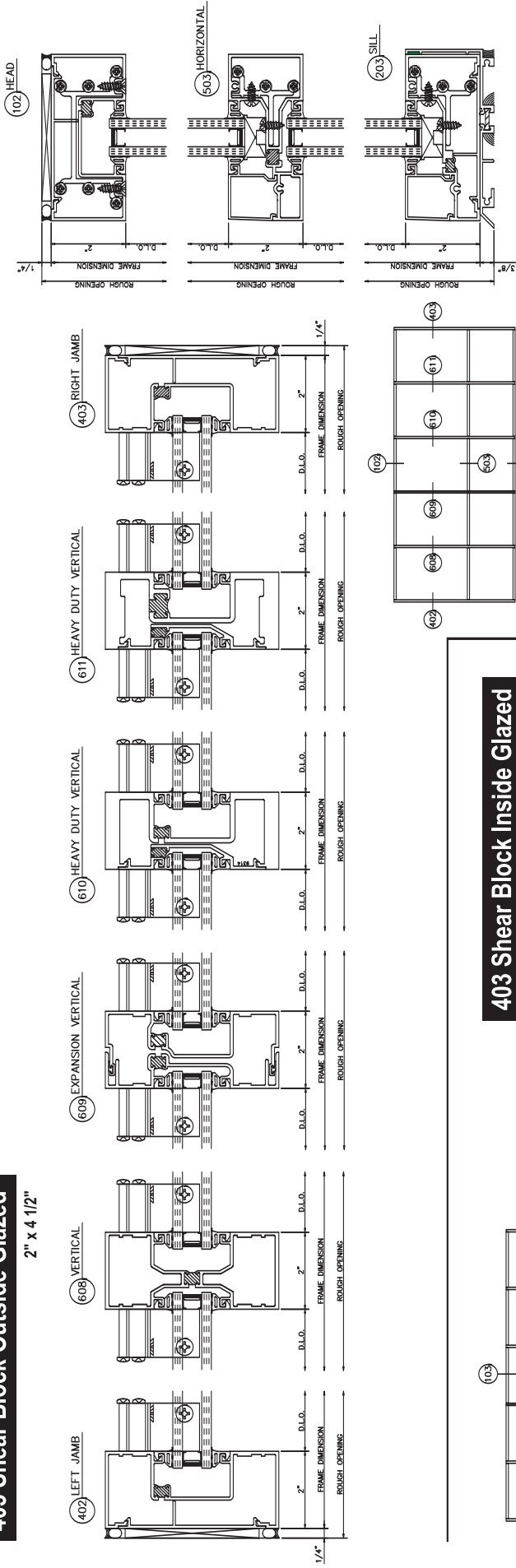
403 Screw Spline Inside Glazed

2" x 4 1/2"



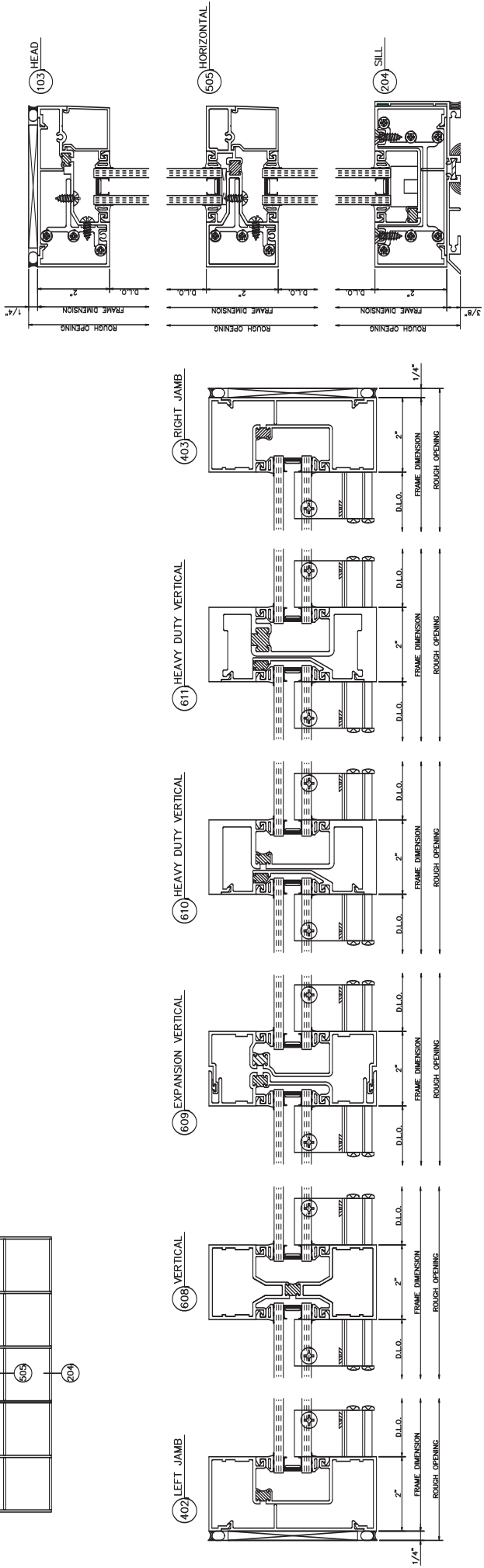
403 Shear Block Outside Glazed

2" x 4 1/2"

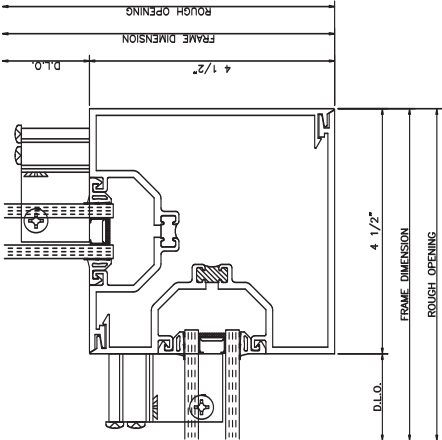


403 Shear Block Inside Glazed

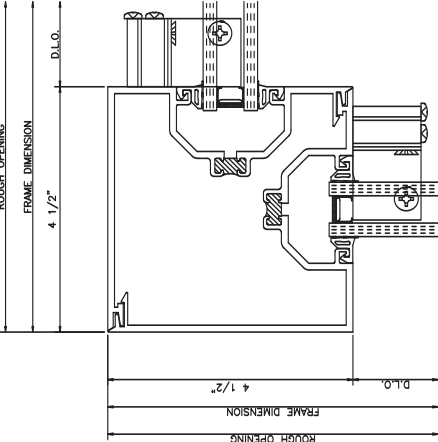
2" x 4 1/2"



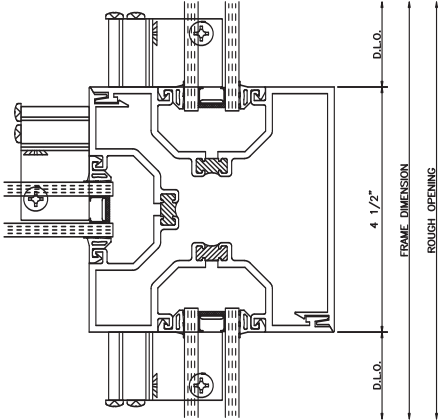
90° OUTSIDE CORNER



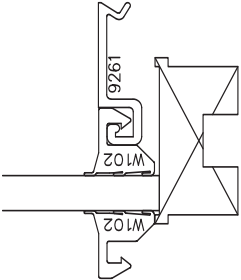
90° INSIDE CORNER



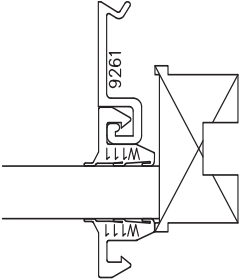
3-WAY CORNER



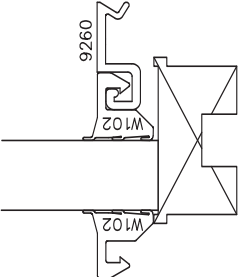
1/4" GLAZING



3/8" GLAZING



1/2" GLAZING



5/16" GLAZING

