



## **Series 402** **2" x 4 1/2" Storefront Framing**

### **Configurations** Shear Block • Screw Spline • Can Receptor

This economical flush glaze system is available in both shear block and screw spline fabrication methods. Series 402 Storefront can accommodate all standard 1 3/4" entrances as well as WV410 vents. Vertical mullions will accept steel reinforcement to enhance structural performance.

### **Features**

Open back and shear block door frames with transom bars and bulb type weather stripping

Accommodates up to 1 1/8" glazing

Uniform glazing gasket is used for exterior and interior

The optional Roto-Vent™ ventilator

2-way corner mullions (90° & 135°)

3-way corner mullions (T-mullions)

0°-15° and 15°-30° variable mullions

Various height intermediate horizontals and sills

Accessory line of perimeter anchors, pocket fillers, door adaptors, etc.

Anodized or painted finishes available

### **Benefits**

Makes installation easier  
Compatible with all 1 3/4" EFCO doors  
Contact EFCO Applications Department for 2" Doors

Expands design and energy savings options

Allows optimized use of gasket  
Simplifies ordering and installation

Allows fresh air into the room, yet maintains security

Design flexibility

Multifaceted elevations

Custom applications

Ability to maintain desired sight line

Increased product versatility

Unlimited options to answer economic and aesthetic concerns

Manufacturer

Of

Architectural

And

Commercial

Grade

Windows,

Curtain Walls,

Entrances,

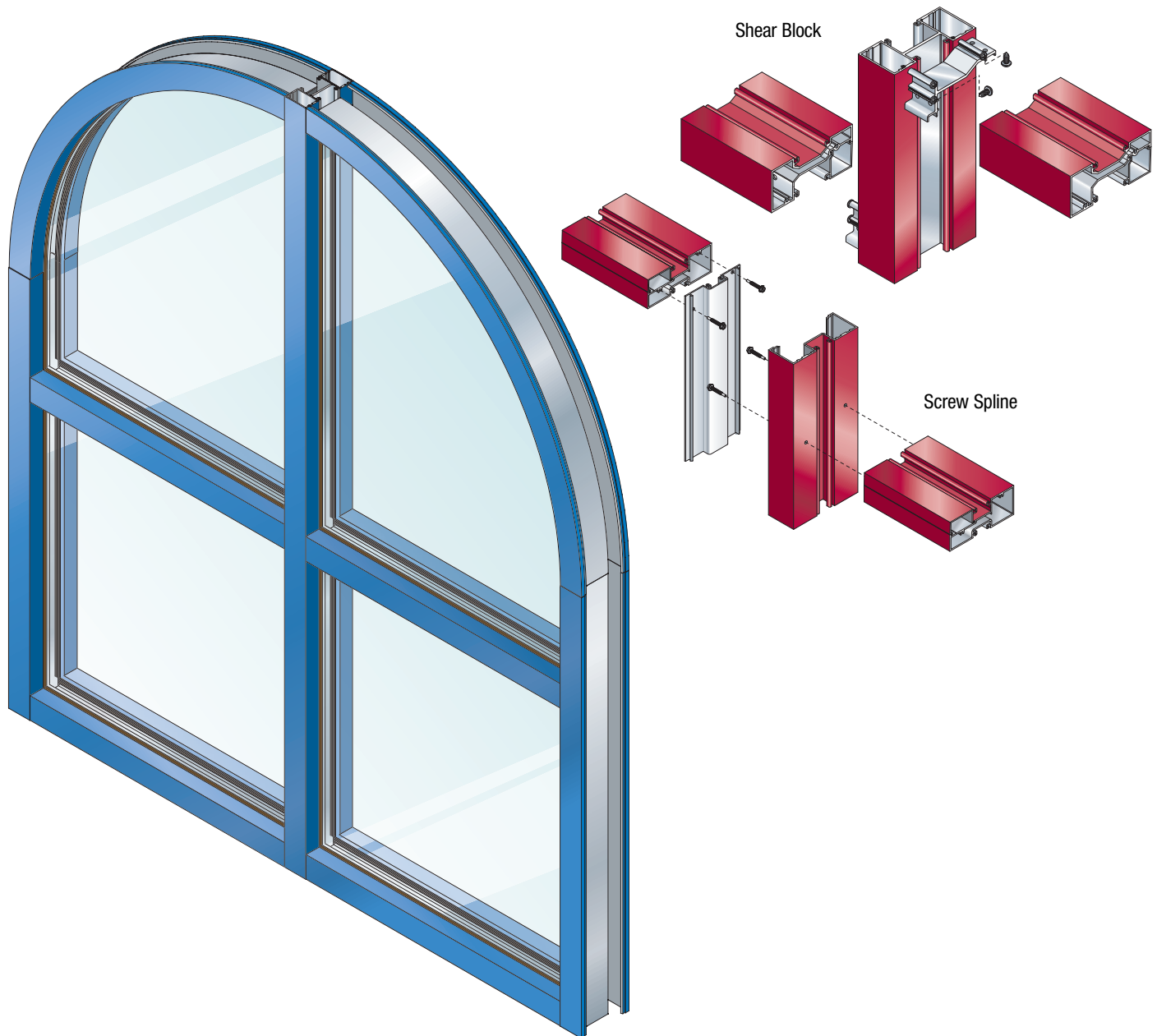
And

Storefronts

EFCO CORPORATION  
1000 COUNTY RD  
MONETT, MO 65708  
800.221.4169

# Series 402

## 2" x 4 1/2" Storefront Framing



### Performance Data

#### System 402 Storefront Screw Spline Framing

Air Infiltration . . . . . <.06 cfm/sf @ 6.24 psf  
 Water . . . . . No Leakage @ 12.0 psf  
 Structural . . . . . See wind load charts

#### System 402 Storefront Shear Block Framing

Air Infiltration . . . . . <.06 cfm/sf @ 6.24 psf  
 Water . . . . . No Leakage @ 12.0 psf  
 Structural . . . . . See wind load charts

A = Estimated values and/or designations  
 B = Non-standard size or configuration  
 C = Dual glazed  
 D = 1" Insulated - 1/4" clear, 1/2" air, 1/4" clear  
 E = 1" Insulated - 1/4" clear (Low Emissivity), 1/2" air, 1/4" clear  
 F = 1" Insulated - 1/4" clear (Low Emissivity), 1/2" argon, 1/4" clear  
 G = 1" Insulated - 1/4" clear, 1/2" air, 1/4" clear (Low Emissivity)

### Glazing

System 402 can be inside or outside glazed with extruded aluminum, snap-in glazing bead. Glass is "dry glazed" with top load EPDM gasket. Glazings of 3/16" to 1-1/16" infill panels are accommodated. See Glazing Chart below for exact size.

System 402 Glazing Chart	Polycarbonate			Glass or Panel												
	3/16"	1/4"	5/16"	3/16"	1/4"	1/4"***	5/16"	7/16"	1/2"	9/16"	5/8"	3/4"	7/8"	15/16"	1"	1-1/16"
Monolithic Glass	C	C	C	C	C	C	C									
Insulated Glass												C		C	A	C

\*\*\*-Laminated Glass  
 Thickness  
 A -Available Glazing Option  
 C -Adaptor and/or gasket  
 required  
 blank - N/A

# Series 402

## 2" x 4 1/2" Storefront Framing



### Frame Construction

The frames have a depth of 4 1/2" and a nominal material wall thickness of .080". Members are extruded 6063-T6 aluminum alloy. Corner construction employs screw spline or shear block methods. See Illustration 1 & 2.

### Door Frames

System 402 offers integral entrance frames as a part of the framing system. Members are nominally .080" in thickness.

### Weather Stripping

All entrance frames are weather-stripped with EPDM bulb gasket.

### Glazing

System 402 can be inside or outside glazed with extruded aluminum, snap-in glazing bead. Glass is "dry glazed" with top load EPDM gasket. Glazings of 3/16" to 1 1/16" infill panels are accommodated. See Glazing Chart for exact size.

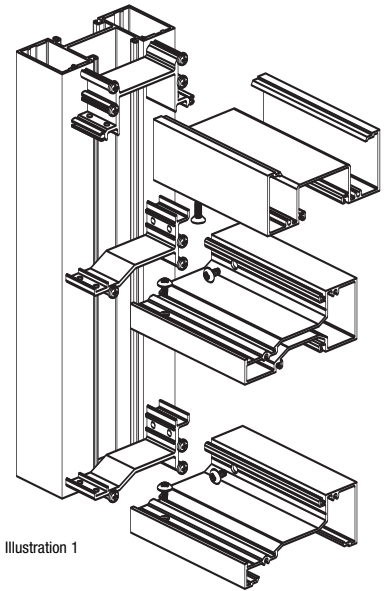


Illustration 1

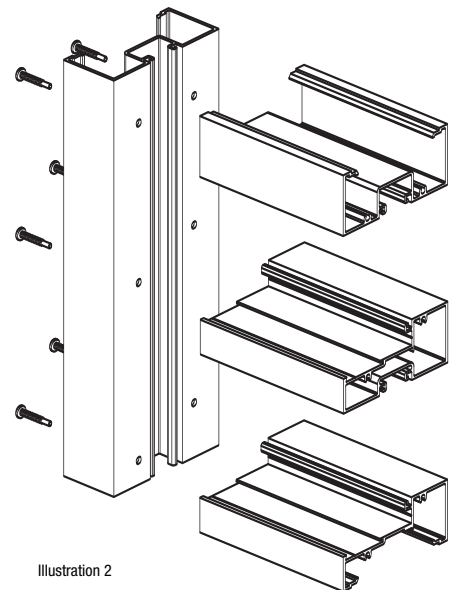


Illustration 2

## 402 Screw Spline Inside Glazed

2" x 4 1/2"

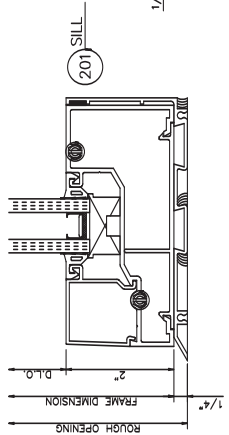
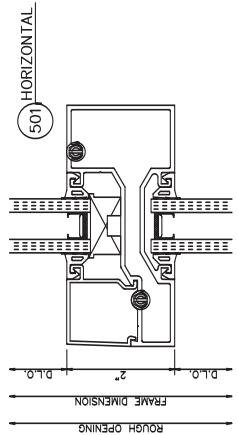
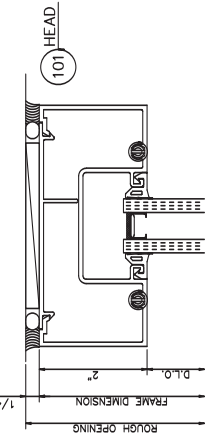
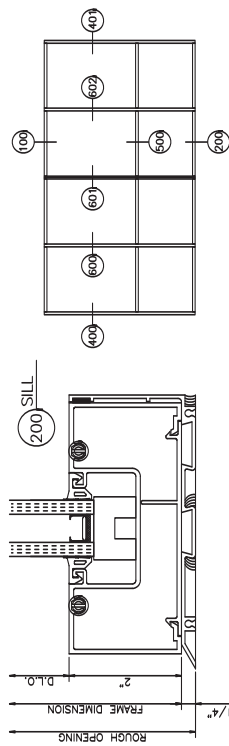
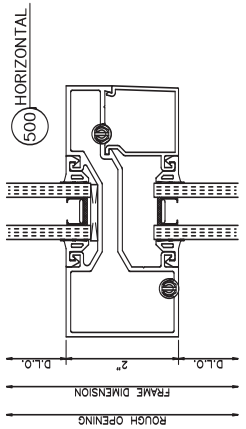
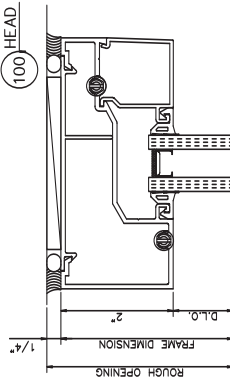
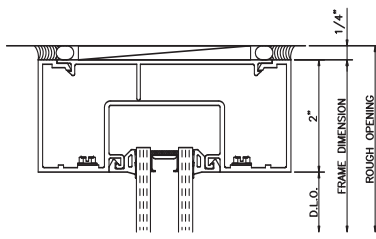
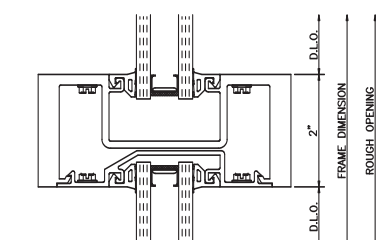
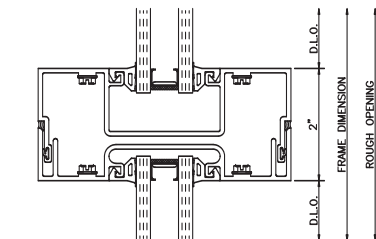
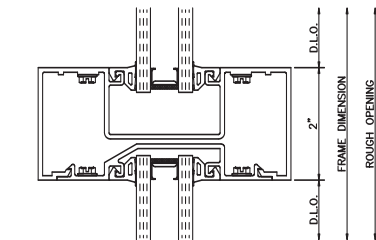
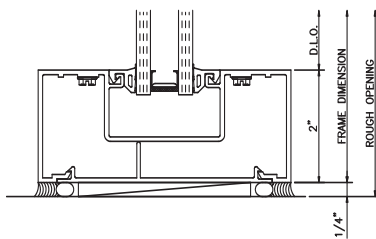
400 LEFT JAMB

600 VERTICAL

601 EXPANSION VERTICAL

602 HEAVYDUTY VERTICAL

401 RIGHT JAMB



## 402 Screw Spline Outside Glazed

2" x 4 1/2"

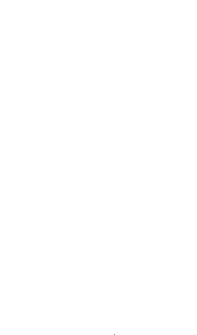
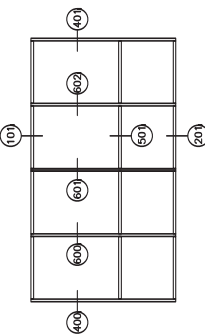
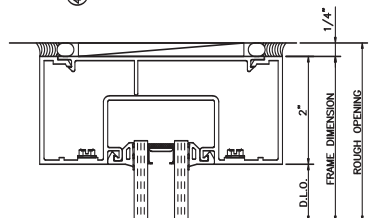
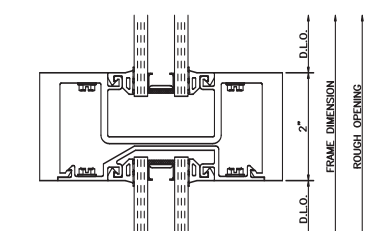
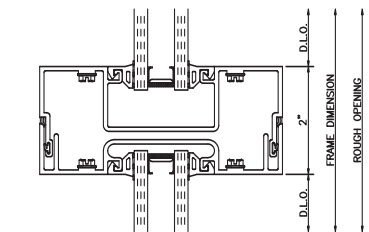
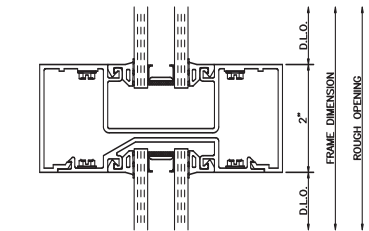
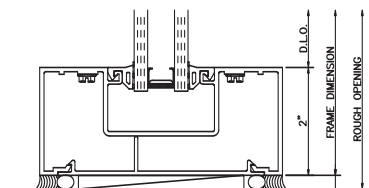
400 LEFT JAMB

600 VERTICAL

601 EXPANSION VERTICAL

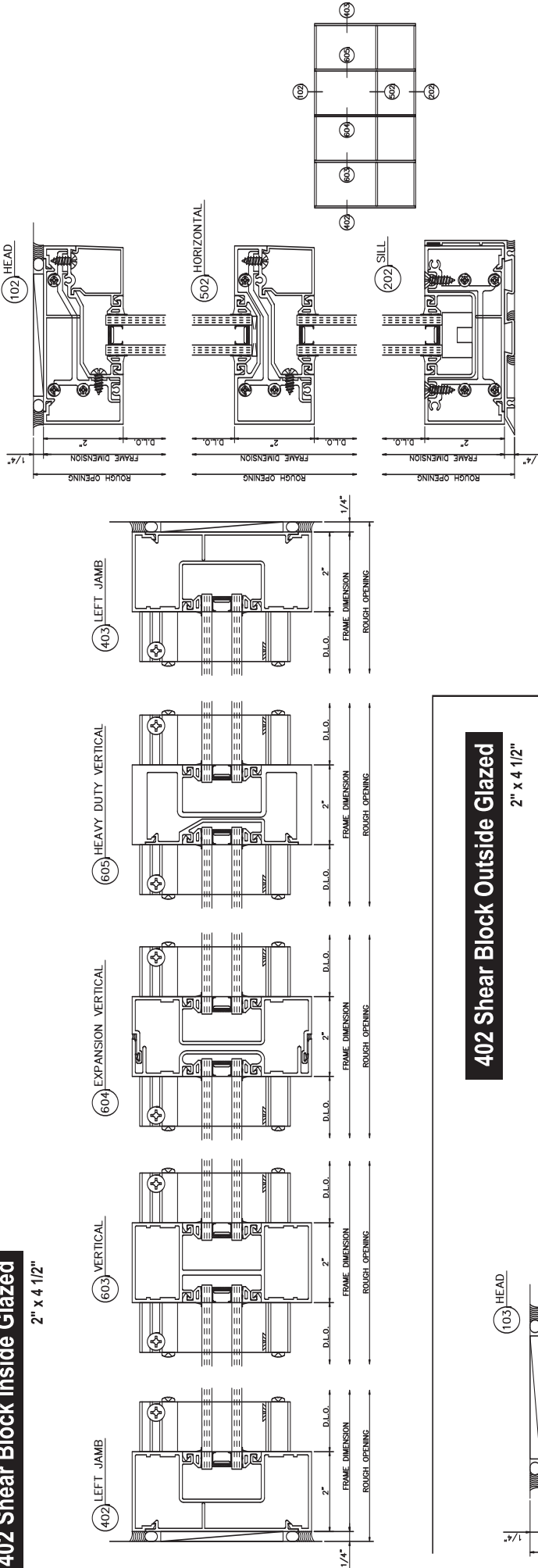
602 HEAVYDUTY VERTICAL

401 RIGHT JAMB



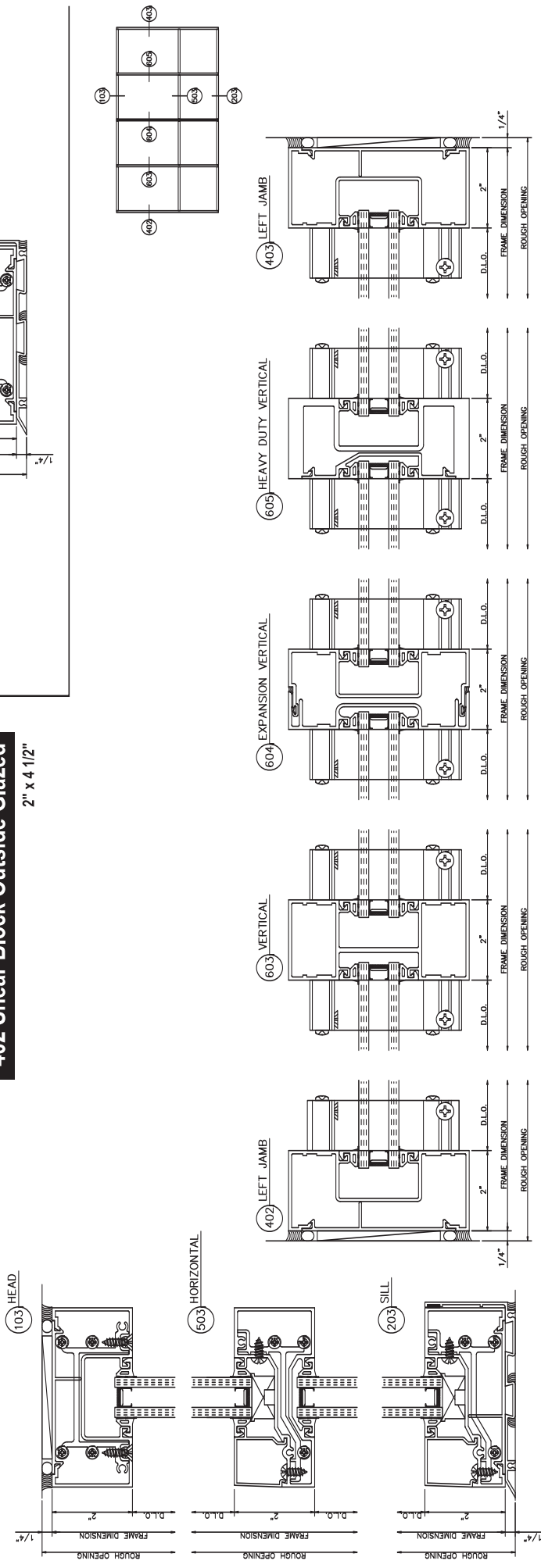
## 402 Shear Block Inside Glazed

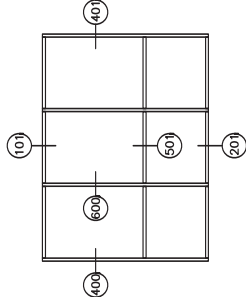
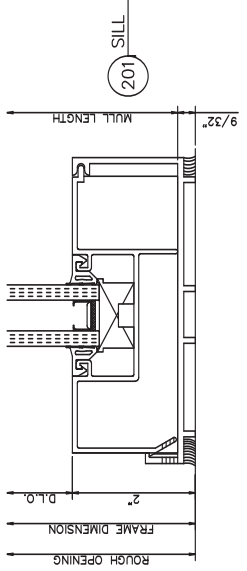
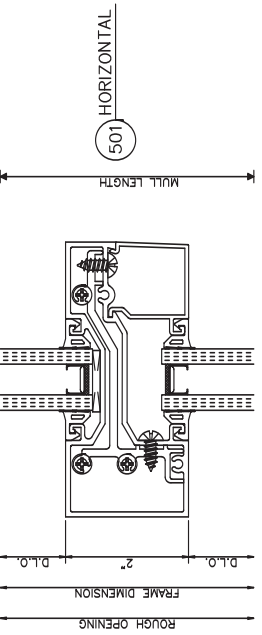
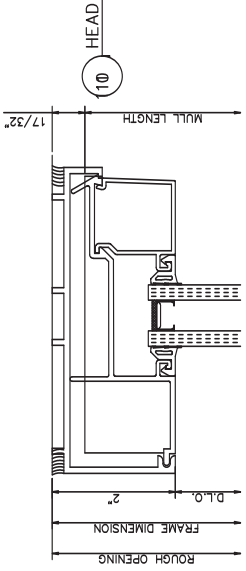
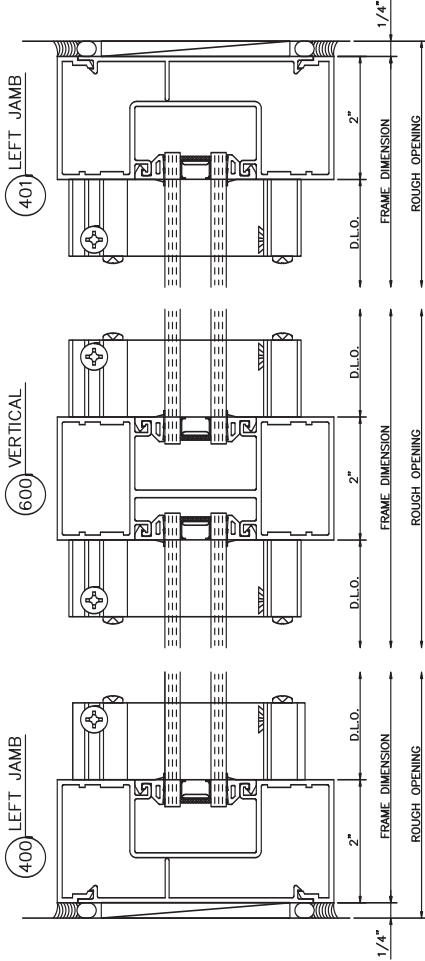
2" x 4 1/2"



## 402 Shear Block Outside Glazed

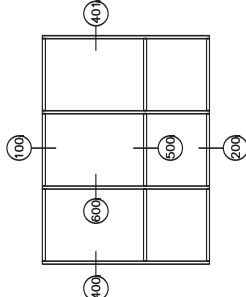
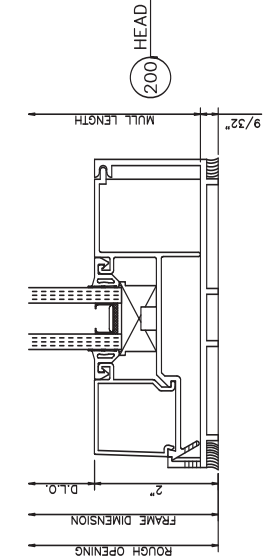
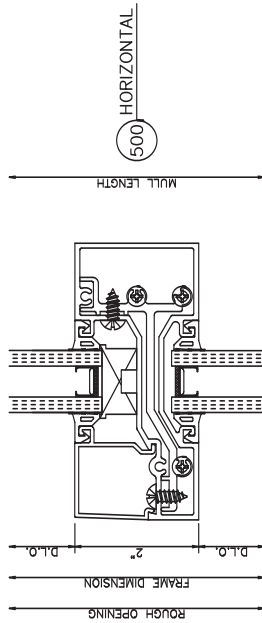
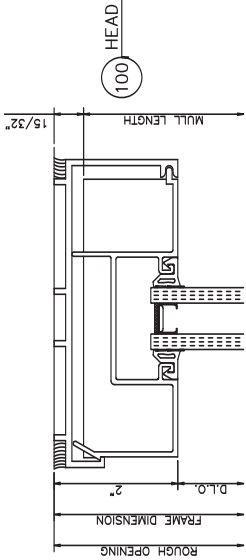
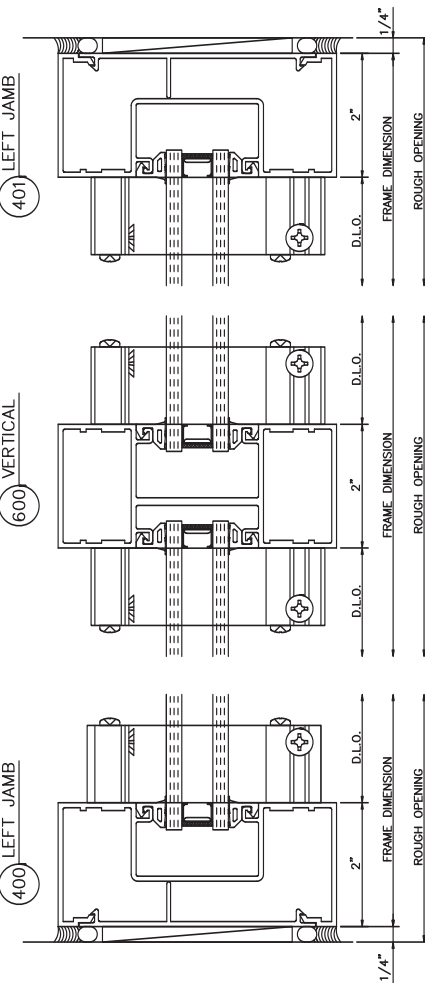
2" x 4 1/2"





**402 Can System Inside Glazed**

2" x 4 1/2"

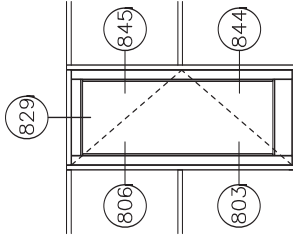
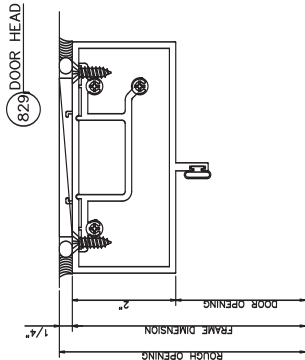


**402 Can System Outside Glazed**

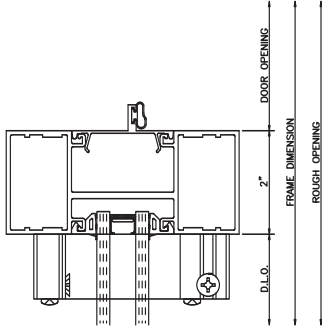
2" x 4 1/2"

# 402 Door Frames Outside Glazed

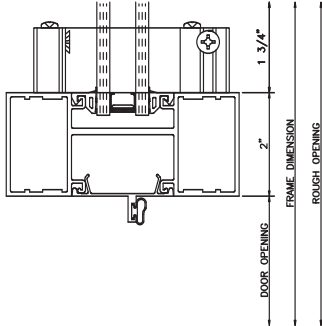
Single Acting 1 piece Jamb • Right Outswing



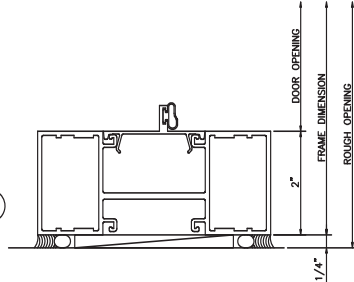
806 DOOR JAMB



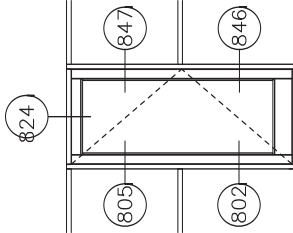
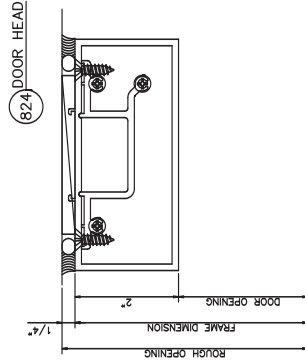
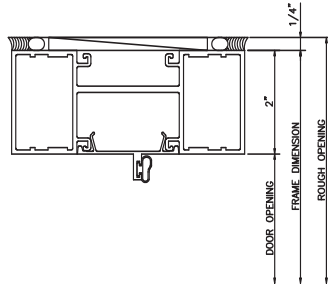
845 DOOR JAMB



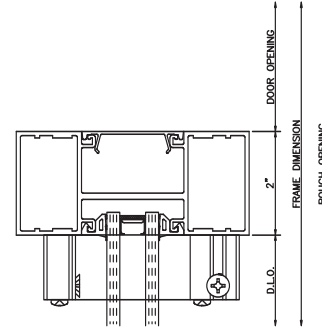
803 DOOR JAMB



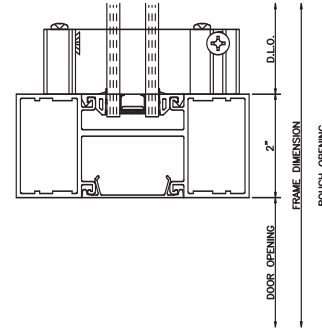
844 DOOR JAMB



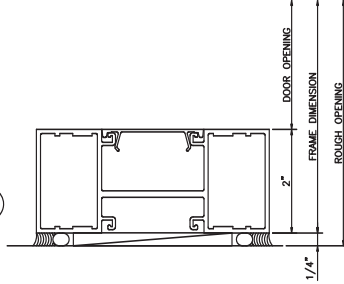
805 DOOR JAMB



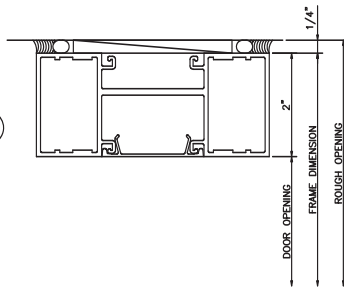
847 DOOR JAMB



802 DOOR JAMB

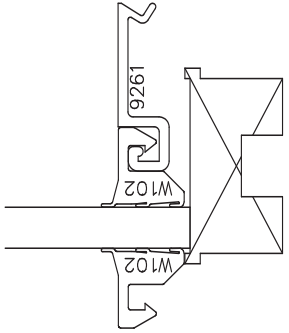


846 DOOR JAMB

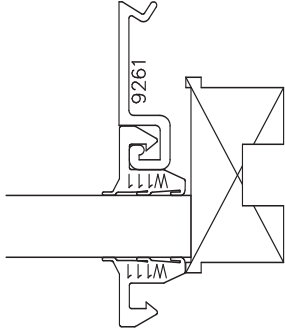




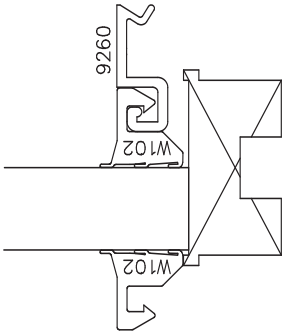
1/4" GLAZING



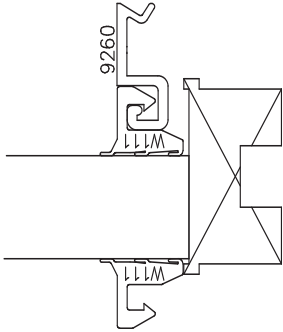
3/8" GLAZING



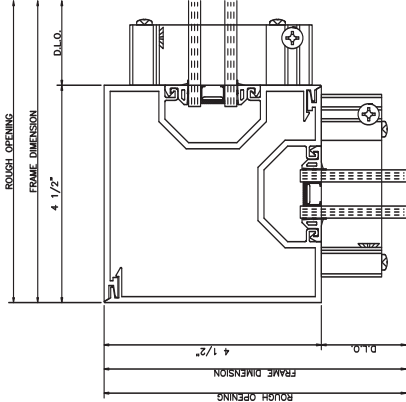
1/2" GLAZING



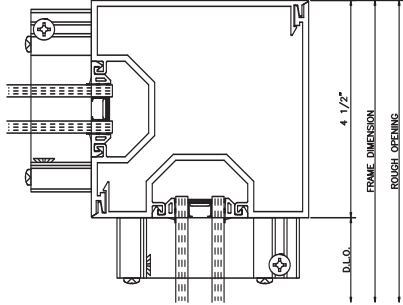
5/16" GLAZING



90° INSIDE CORNER



90° OUTSIDE CORNER



3-WAY CORNER

