



## **Series 401** **1 3/4" x 4 1/2" Storefront Framing**

### **Configurations** Shear Block • Screw Spline • Can Receptor

Series 401 is an economical flush glaze system available in both shear block and screw spline fabrication methods. Series 401 Storefront can accommodate all standard 1 3/4" entrances as well as WV410 vents. Vertical mullions will accept steel reinforcement to enhance structural performance.

Manufacturer  
Of  
Architectural  
And  
Commercial  
Grade  
Windows,  
Curtain Walls,  
Entrances,  
And  
Storefronts

### **Features**

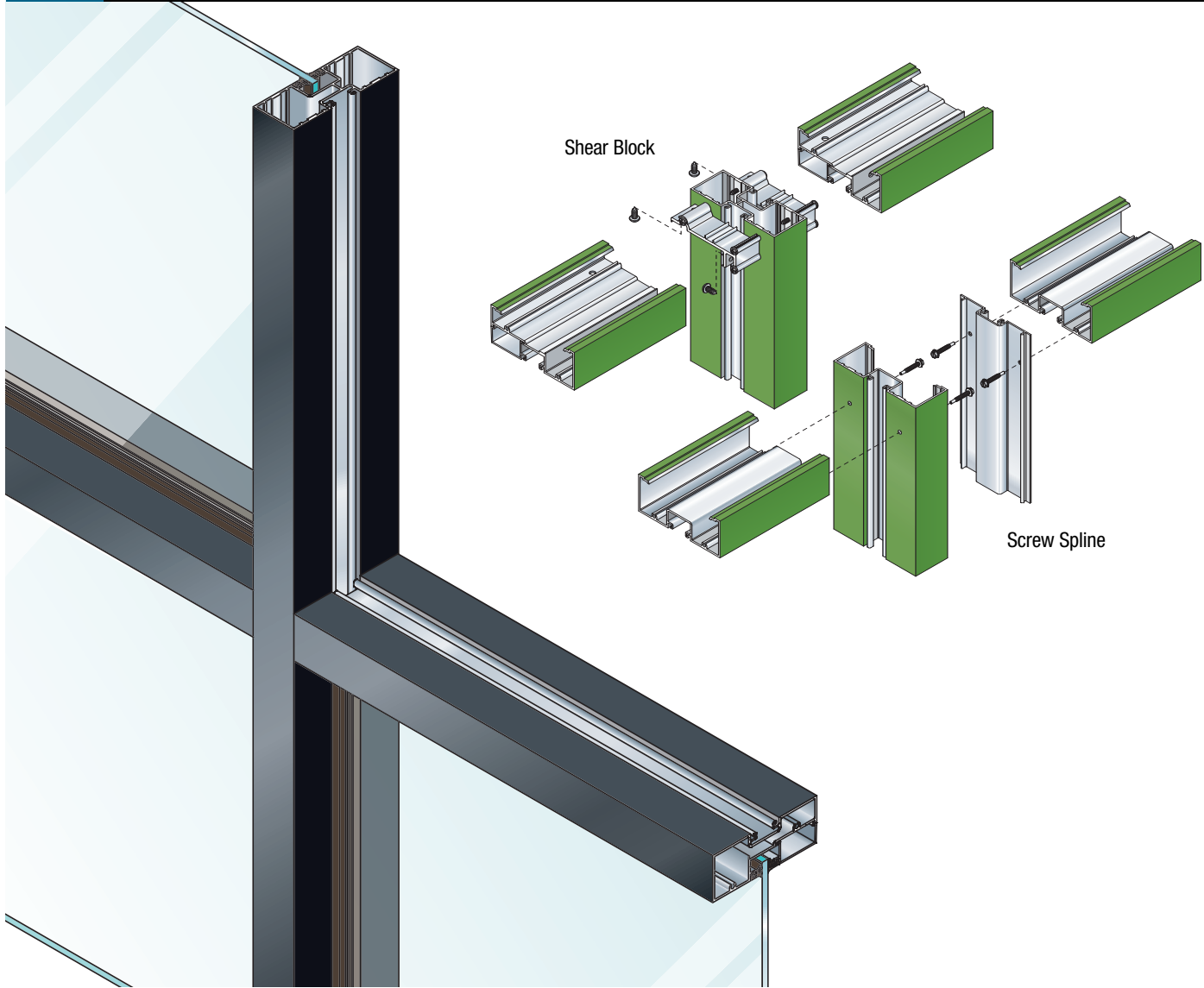
### **Benefits**

Optional Roto-Vent™ ventilator	Allows ventilation while maintaining security
Two fabrication/erection options (screw spline, shear block)	Method of installation fits job conditions
Open back and shear block door frames with transom bars and rubber weather stripping	Makes installation easier Can be shop fabricated to reduce field labor cost Compatible with all 1 3/4" EFCO doors Contact EFCO Applications Department for 2" Doors
The same glazing gasket used for exterior and interior	Simplifies ordering and installation Allows optimized use of gasket
Accommodates up to 5/16" glazing	Handles the most popular glass thicknesses
2-way corner mullions (90° & 135°)	Design flexibility
3-way corner mullions (T-mullions)	Multifaceted elevations
0°-15° and 15°-30° variable mullions	Custom applications
Various height intermediate horizontals and sills	Ability to maintain desired sight line
Accessory line of perimeter anchors, pocket fillers, door adaptors, etc.	Increased product versatility
Anodized and painted finishes available	Unlimited options to answer economic and aesthetic concerns

EFCO CORPORATION  
1000 COUNTY RD  
MONETT, MO 65708  
800.221.4169

# Series 401

## 1 3/4" x 4 1/2" Storefront Framing



### Performance Data

#### System 401 Storefront Screw Spline Framing

Air Infiltration	<.06 cfm/sf @ 6.24 psf
Water	No Leakage @ 10.0 psf
Structural	See wind load charts

#### System 401 Storefront Shear Block Framing

Air Infiltration	<.06 cfm/sf @ 6.24 psf
Water	No Leakage @ 10.0 psf
Structural	See wind load charts

A = Estimated values and/or designations  
 B = Non-standard size or configuration  
 C = Dual glazed  
 D = 1" Insulated - 1/4" clear, 1/2" air, 1/4" clear  
 E = 1" Insulated - 1/4" clear (Low Emissivity), 1/2" air, 1/4" clear  
 F = 1" Insulated - 1/4" clear (Low Emissivity), 1/2" argon, 1/4" clear  
 G = 1" Insulated - 1/4" clear, 1/2" air, 1/4" clear (Low Emissivity)

#### System 401 Storefront Can Receptor Framing

Air Infiltration	<.06 cfm/sf @ 6.24 psf
Water	No Leakage @ 10.0 psf
Structural	See wind load charts

### Glazing

System 401 can be inside or outside glazed with extruded aluminum, snap-in glazing bead. Glass is "dry glazed" with top load EPDM gasket. Glazings of 3/16" to 5/16" infill panels are accommodated. See Glazing Chart below for exact size.

System 401 Glazing Chart	Polycarbonate			Glass or Panel												
	3/16"	1/4"	5/16"	3/16"	1/4"	1/4"***	5/16"	7/16"	1/2"	9/16"	5/8"	3/4"	7/8"	15/16"	1"	1-1/16"
Monolithic Glass	C	A	C	C	A	A	C									
Insulated Glass																

\*\*\*-Laminated Glass Thickness  
 A -Available Glazing Option  
 C -Adaptor and/or gasket required  
 blank - N/A

# Series 401

## 1 3/4" x 4 1/2" Storefront Framing



### Frame Construction

The frames have a depth of 4 1/2" and a nominal material wall thickness of .080". Members are extruded 6063-T6 aluminum alloy. Corner construction employs screw spline or shear block methods. See Illustration 1 & 2.

### Door Frames

System 401 offers integral entrance frames as a part of the framing system. Members are nominally .080" in thickness.

### Weather Stripping

All entrance frames are weather-stripped with EPDM bulb gasket.

### Glazing

System 401 can be inside or outside glazed with extruded aluminum, snap-in glazing bead. Glass is "dry glazed" with top load EPDM gasket. Glazings of 3/16" to 5/16" infill panels are accommodated. See Glazing Chart for exact size.

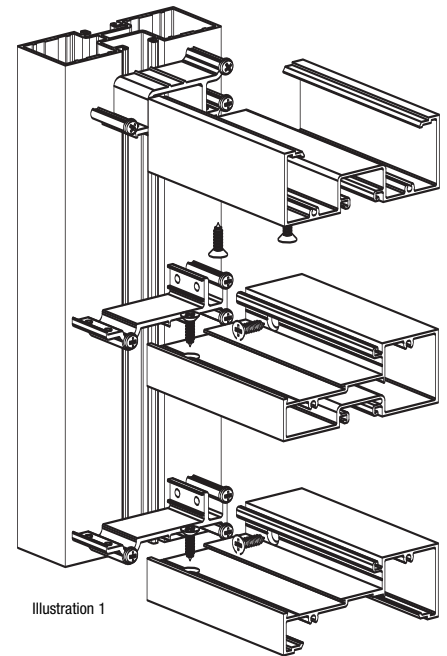


Illustration 1

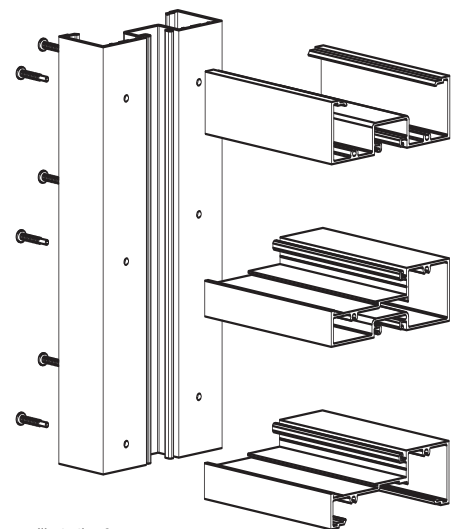
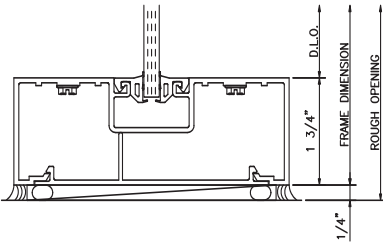


Illustration 2

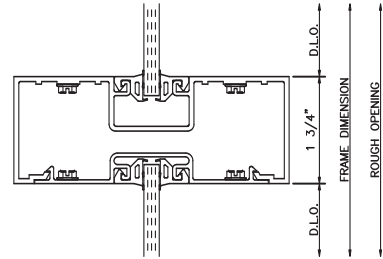
**401 Screw Spline Outside Glazed**

1 3/4" x 4 1/2"

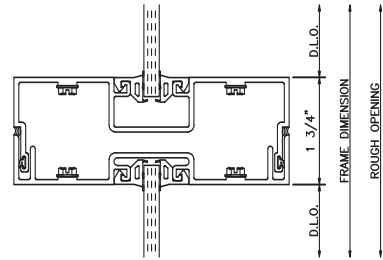
400 LEFT JAMB



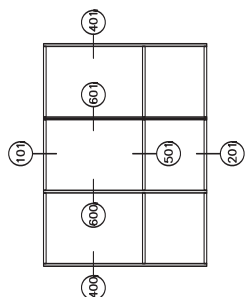
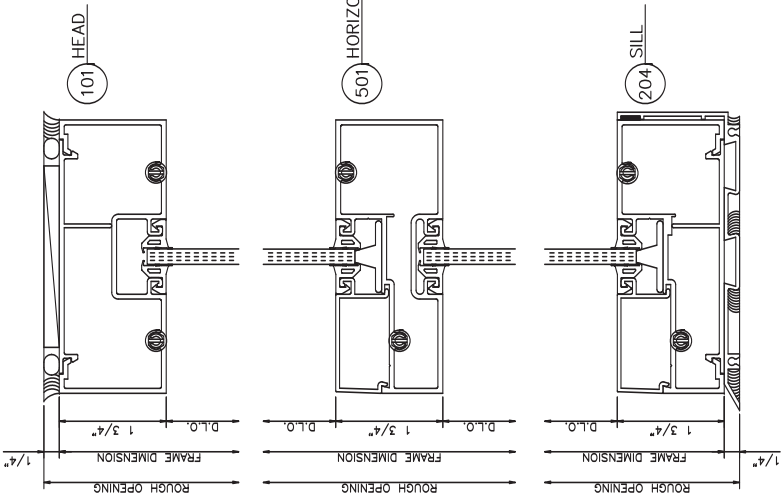
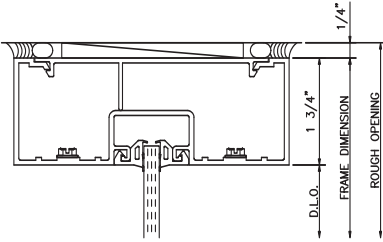
600 VERTICAL



601 EXPANSION VERTICAL

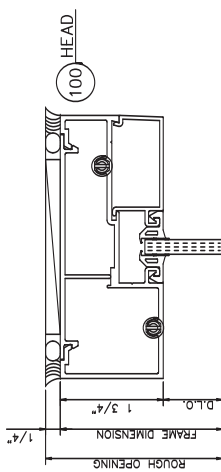


601 RIGHT JAMB

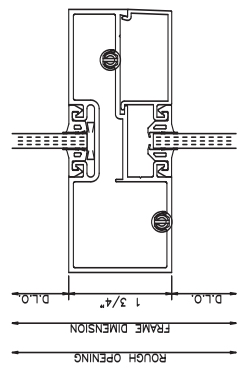


**401 Screw Spline Inside Glazed**

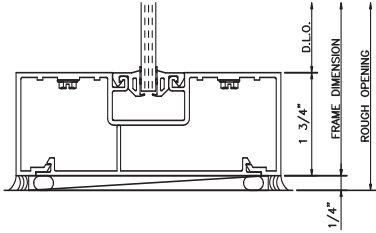
1 3/4" x 4 1/2"



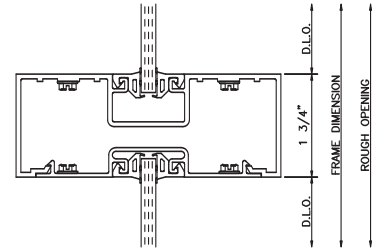
500 HORIZONTAL



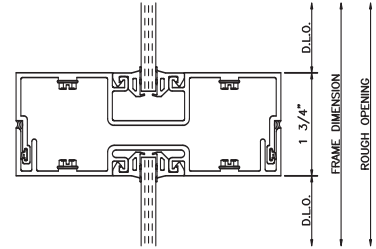
400 LEFT JAMB



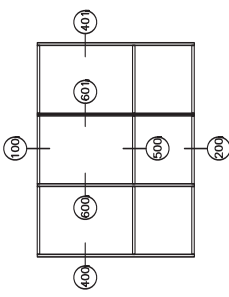
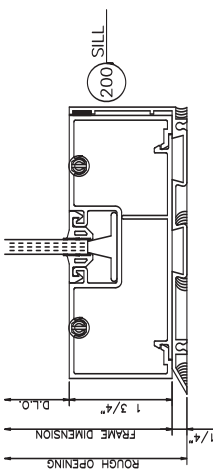
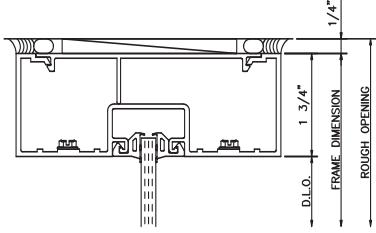
600 VERTICAL



601 EXPANSION VERTICAL

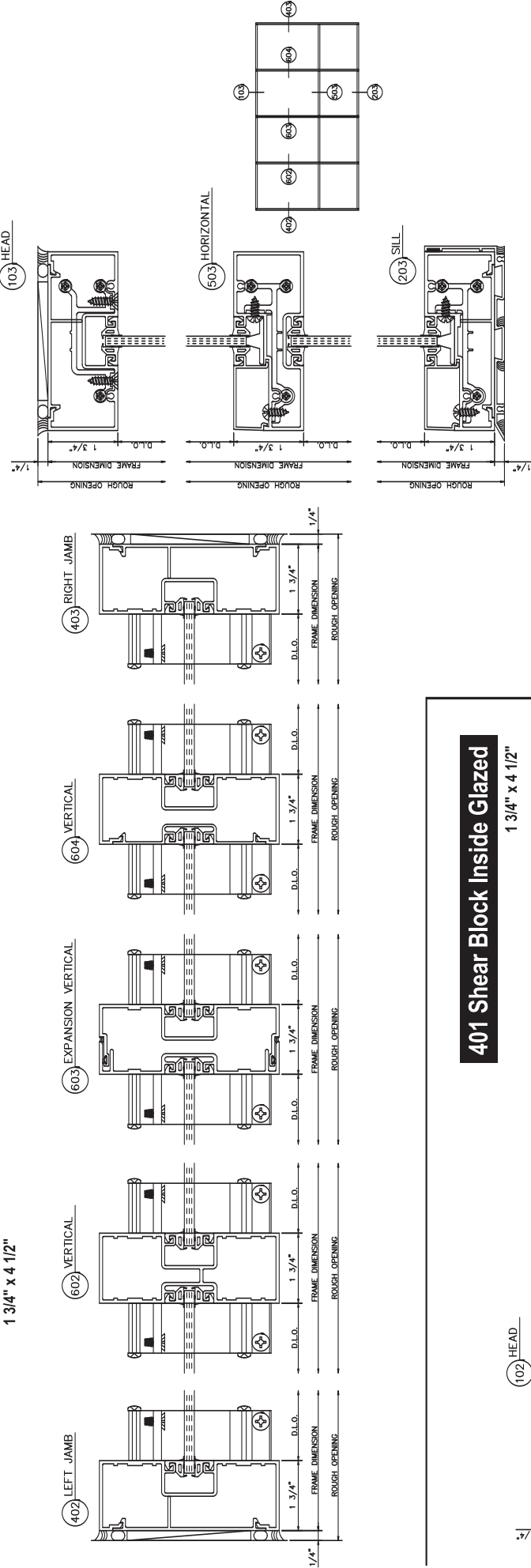


401 RIGHT JAMB



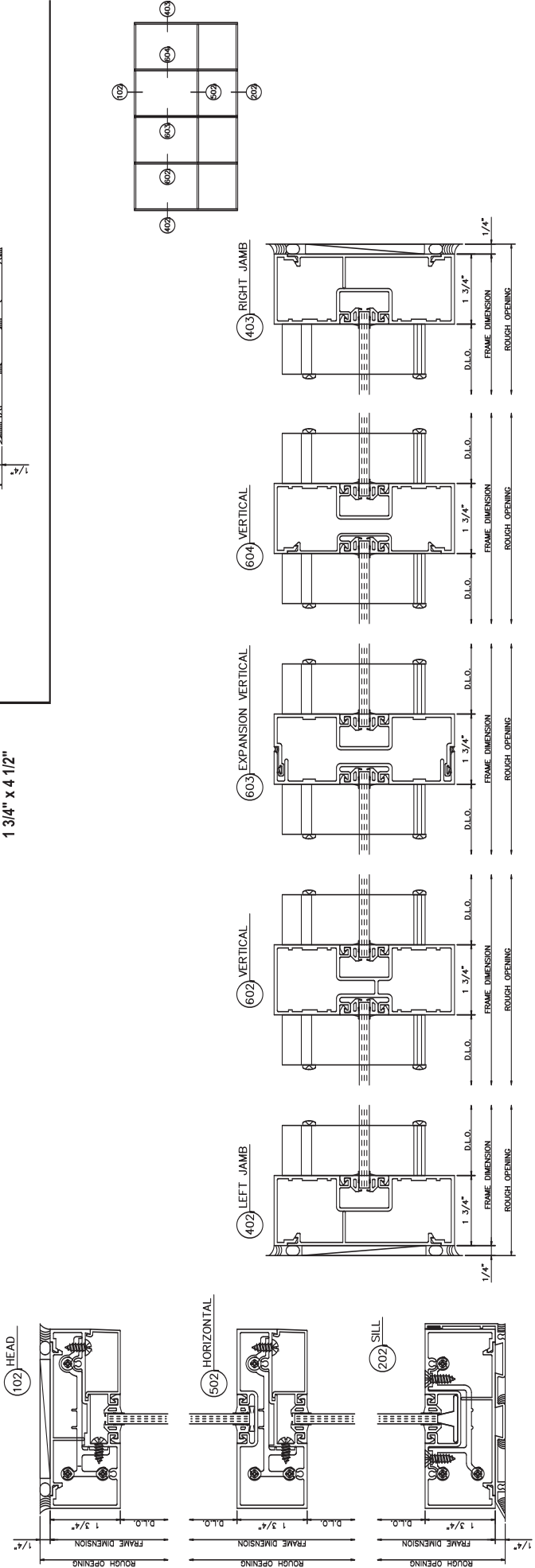
**401 Shear Block Outside Glazed**

1 3/4" x 4 1/2"



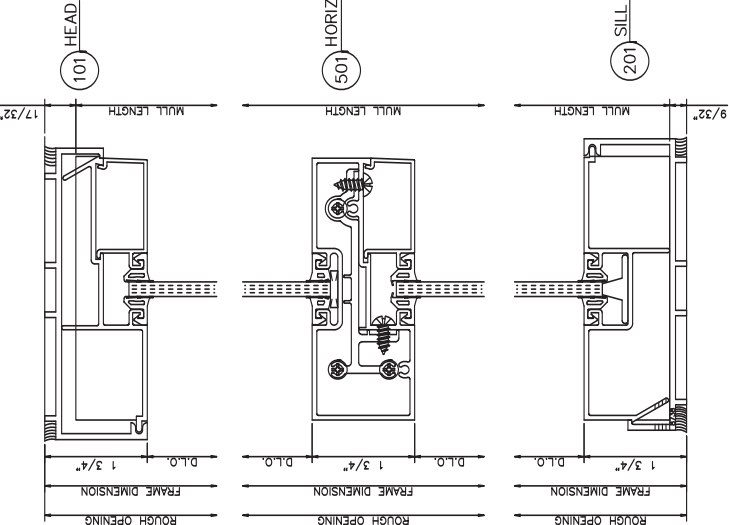
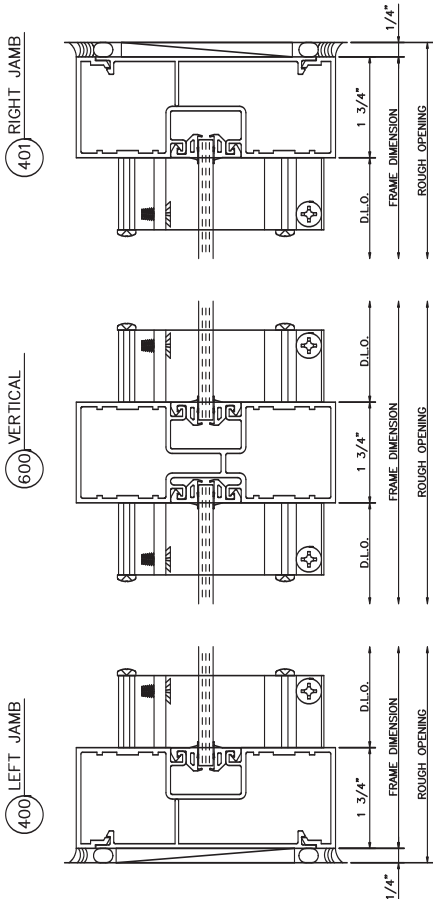
**401 Shear Block Inside Glazed**

1 3/4" x 4 1/2"



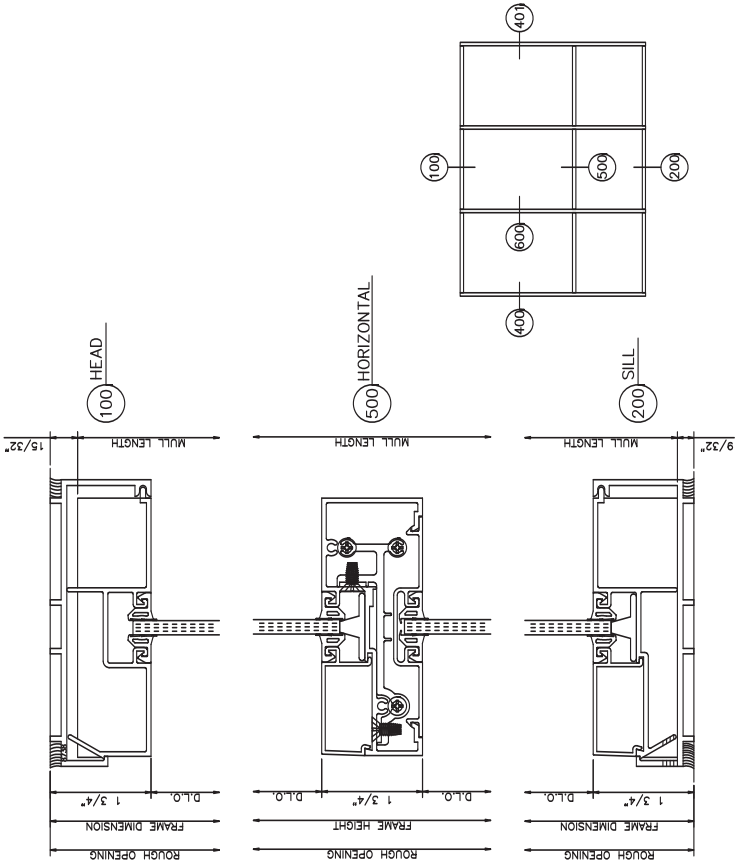
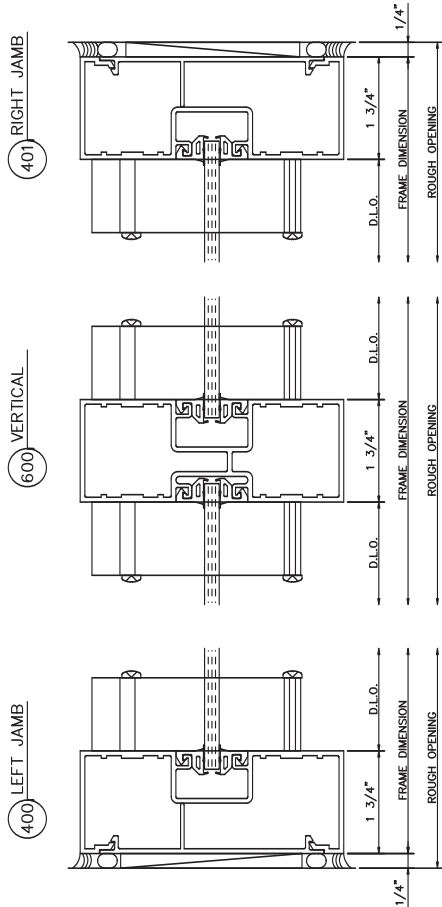
# 401 Can System Outside Glazed

1 3/4" x 4 1/2"



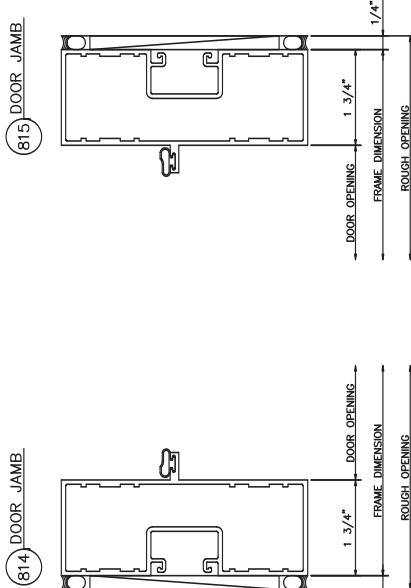
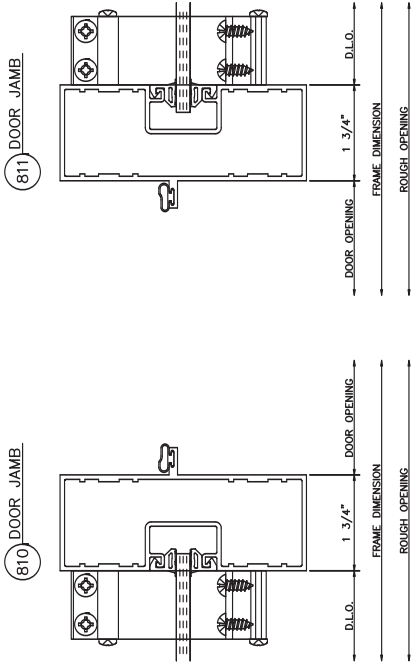
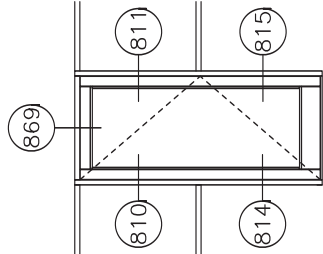
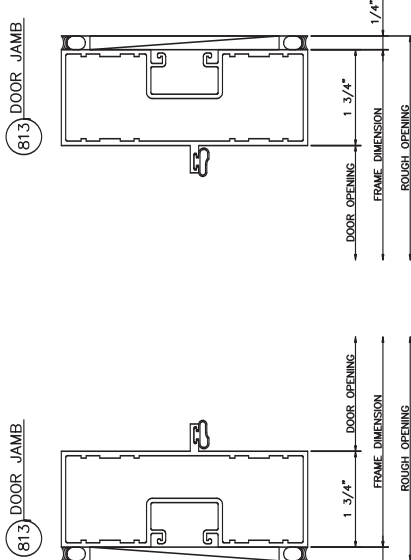
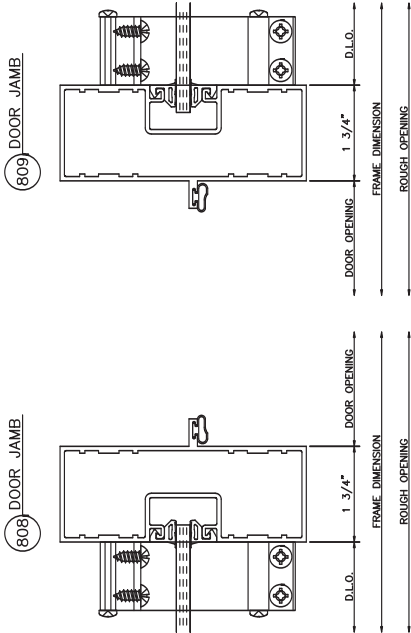
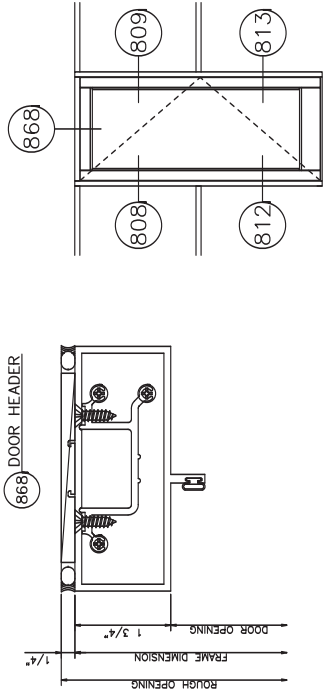
# 401 Can System Inside Glazed

1 3/4" x 4 1/2"



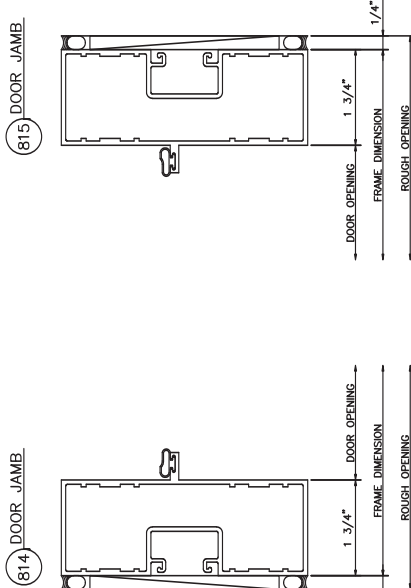
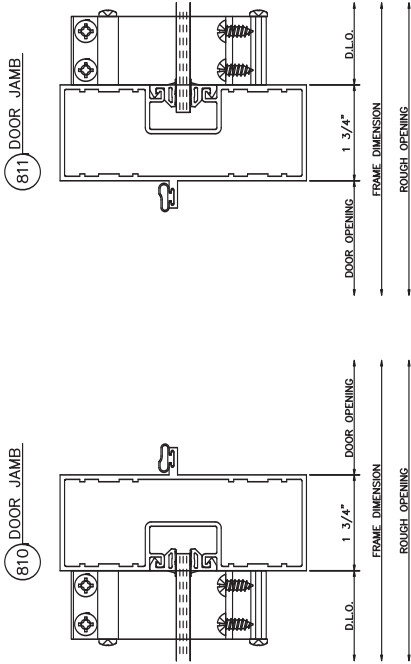
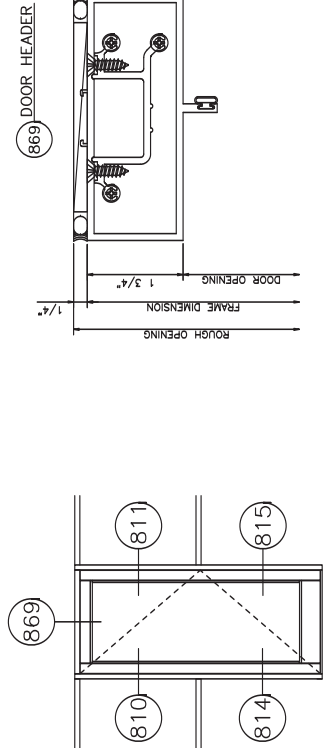
## 401 Door Frames Outside Glazed

Single Acting 1 Piece Jamb • Right Outswing

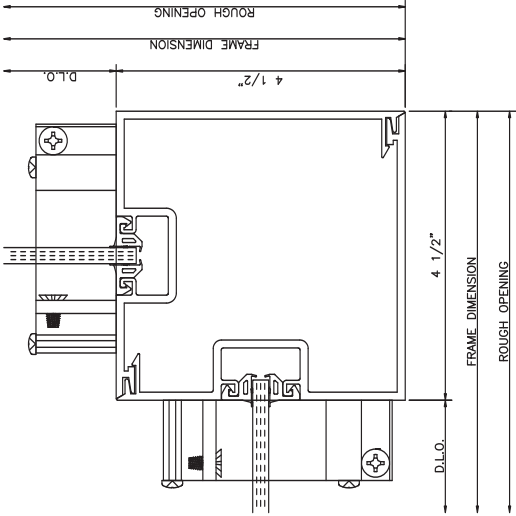


## 401 Door Frames Outside Glazed

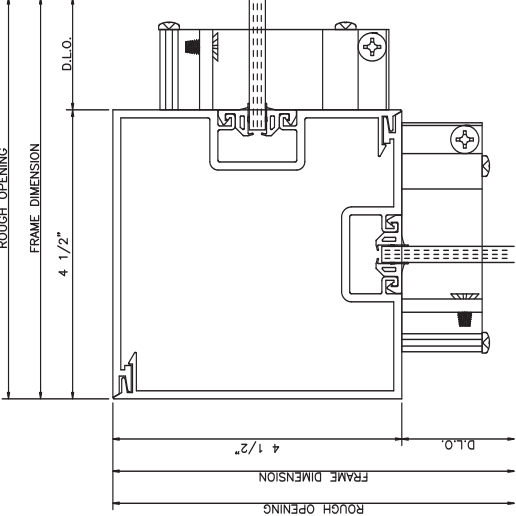
Single Acting 1 Piece Jamb • Right Inswing



90° OUTSIDE CORNER



90° OUTSIDE CORNER



3-WAY CORNER

