

IMPACT GRADE



**Series 3014 Non-Thermal • Series 3016 Thermal Fixed
4 1/2" Heavy Commercial Sliding Glass Door**

Manufacturer
Of
Architectural
And
Commercial
Grade
Windows,
Curtain Walls,
Entrances,
And
Storefronts

Configurations X0 • OX • OXX0 • OXOR • OXOL • Fixed

The Series 3014 retains an AAMA Heavy Commercial grade rating to meet the most demanding specifications. Designed for high-rise residential and condominiums, the 3014 is an attractive product for a wide range of applications. The high-performance 3014 has been tested to meet the most stringent impact glazing requirements. Multiple glazing options provide flexibility to meet specific design requirements. Series 3014 sliding glass door provides the complete solution for your fenestration needs.

Features

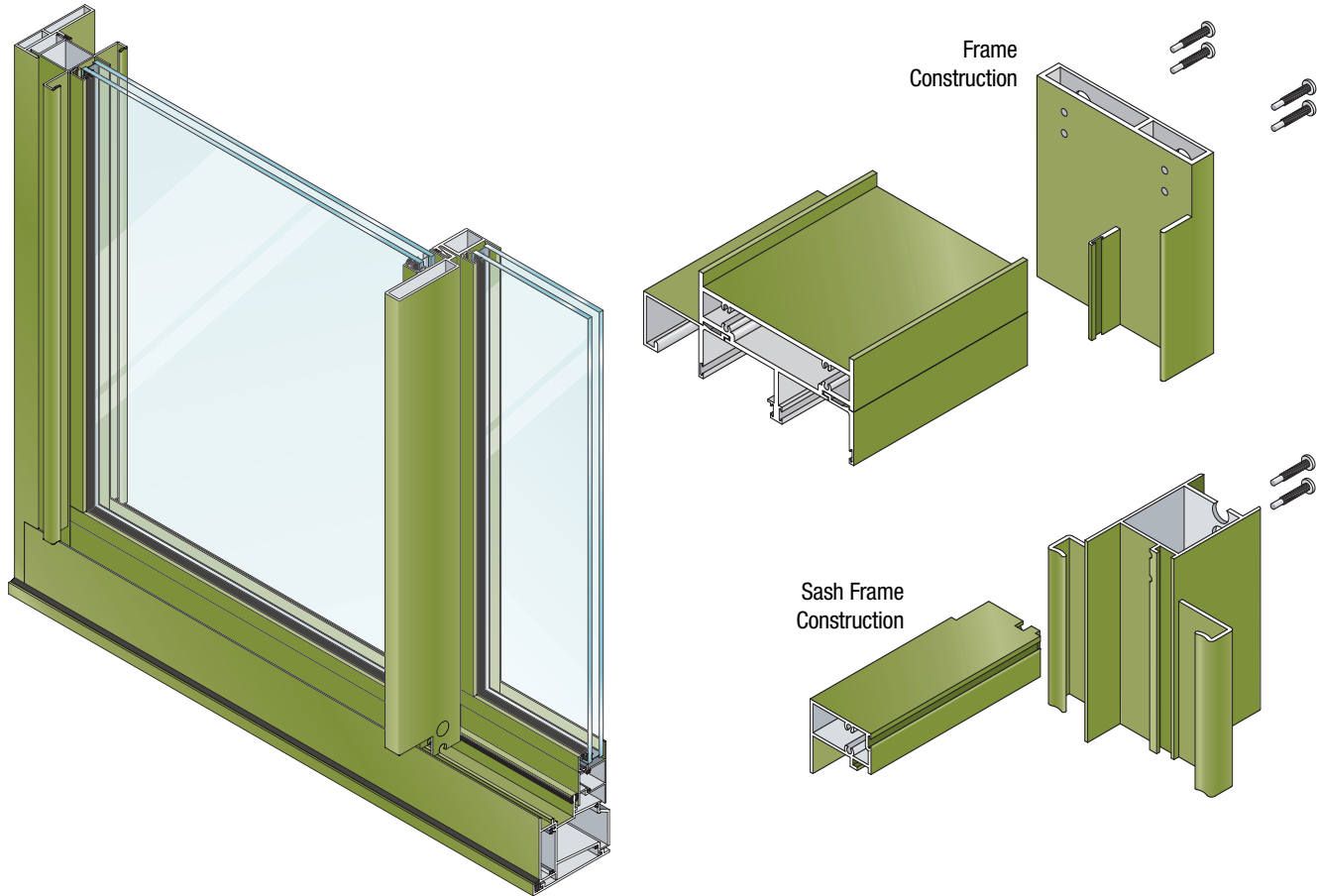
Benefits

Heavy-duty meeting rails	Offers superior structural performance
Sash glides on adjustable tandem steel ball bearing rollers	Allows easier operation
Raised sill track	Minimizes the effects of debris and dirt buildup on the sill
Cam sash design and continuous interlock meeting rails	Yields superior air, water, and structural performance
Glazing depths of 1/4" or 1" are accommodated	Allows 1" thick insulated units
Heavy-duty screen door frames are extruded aluminum alloy with rollers at the head	Stronger, more durable screens Operation is not hindered by debris and dirt build-up on the sill
Anodized or painted finishes available	Unlimited options to answer economic and aesthetic concerns

EFCO CORPORATION
1000 COUNTY RD
MONETT, MO 65708
800.221.4169



Series 3014 Non-Thermal • Series 3016 Thermal Fixed 4 1/2" Heavy Commercial Sliding Glass Door



Performance Data

S-3014 Nonthermal Sliding Glass Door (without steel reinforcement)

AAMA Rating (NAFS-02)	SGD-HC55
Air Infiltration	<.10 cfm/sf @ 6.24 psf
Water	No Leakage @ 15.0 psf
Structural	±82.5 psf

S-3014 Nonthermal Sliding Glass Door (with steel reinforcement)

AAMA Rating (101-97)	SGD-HC100 ^A
Air Infiltration	<.10 cfm/sf @ 6.24 psf
Water	No Leakage @ 12.0 psf
Structural	±150 psf

A = Estimated values and/or designations
 B = Non-standard size or configuration
 C = Dual glazed
 D = 1" Insulated - 1/4" clear, 1/2" air, 1/4" clear
 E = 1" Insulated - 1/4" clear (Low Emissivity), 1/2" air, 1/4" clear
 F = 1" Insulated - 1/4" clear (Low Emissivity), 1/2" argon, 1/4" clear
 G = 1" Insulated - 1/4" clear, 1/2" air, 1/4" clear (Low Emissivity)

S-3016 Corresponding Fixed Window Heavy Commercial

AAMA Rating (101-97)	F-HC80 ^A
Air Infiltration	<.06 cfm/sf @ 6.24 psf ^A
Water	No Leakage @ 12.0 psf ^A
Structural	±120.0 psf ^A
CRF-Frame (1503)	68 ^{A, D}
CRF-Glass (1503)	59 ^{A, D}
U-Value (1503)	.61 ^{A, D}

Series 3014 Hardware Chart	Stainless Steel Dead Bolt	Interior Thumb Turn	Interior and Exterior Extruded Pull Handle	Exterior Cylinder Lock w/ Interior Thumb Turn	Stainless Steel Roller Track Cover	Adjustable Stainless Steel Ball Bearing Rollers
Door Hardware	S	S	S	0	S	S

0 -Optional
 S -Standard
 blank - N/A

S-3014 Glazing Chart	Polycarbonate			Glass or Panel																
	1/8"	3/16"	1/4"	1/8"	.156" ^{**}	3/16"	.200" ^{**}	1/4"	1/4" ^{**}	1/2"	5/8"	3/4"	7/8"	1"	1-1/8"	1-1/4"	1-1/2"	1-3/4"	2"	
Monolithic & Insulated Glass								A						A						

*-Obscure Glass Thickness
 **-Laminated Glass Thickness

A-Available Glazing Option
 blank - N/A

Fixed S-3016 Glazing Chart	Polycarbonate			Glass or Panel																
	1/8"	3/16"	1/4"	1/8"	.156" ^{**}	3/16"	.200" ^{**}	1/4"	1/4" ^{**}	1/2"	5/8"	3/4"	7/8"	1"	1-1/8"	1-1/4"	1-1/2"	1-3/4"	2"	
Monolithic & Insulated Glass										A				A						

Series 3014 Non-Thermal • Series 3016 Thermal Fixed 4 1/2" Heavy Commercial Sliding Glass Door



Frame Construction

The frames have a depth of 4 1/2" and are constructed of 6063-T6 aluminum alloy. Nominal material wall thickness for the frame is .080". Corners are of screw spline construction and sealed. See Illustration 1.

Sash Frame Construction

The sash consists of tubular aluminum members with .080" nominal material wall thickness of 6063-T6 alloy. Corners are of screw spline construction and sealed. Weather-stripped interlock at the sash meeting rail(s) is standard. This offers superior weathering and structural performance. See Illustration 2.

Weather Stripping

All sash are weather-stripped with TRIPLE FIN™.

Screens

Screen frames are extruded 6063-T6 aluminum alloy with lock. 18 x 16 mesh screens are available in fiber-glass and .011" diameter aluminum. 18 x 18 mesh screens are available in .009" diameter stainless steel.

Hardware

The standard locking hardware is Sash Controls dead lock. The sash glides on a pair of tandem rollers over a raised sill track, minimizing the effects of dust and dirt build-up. See Hardware Chart for available hardware types.

Glazing

Doors are glazed with an extruded aluminum snap-in glazing bead and drive-in wedge gasket. Glazings of 1/4" or 1" are accommodated.

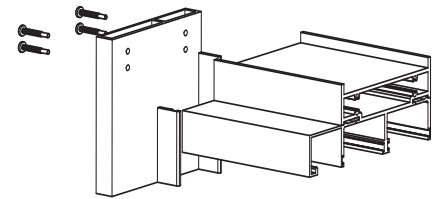


Illustration 1

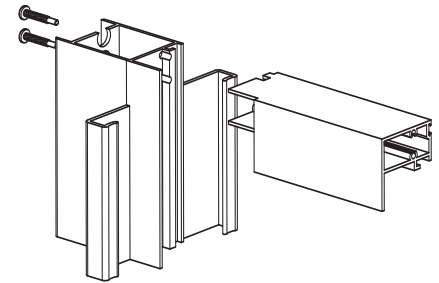
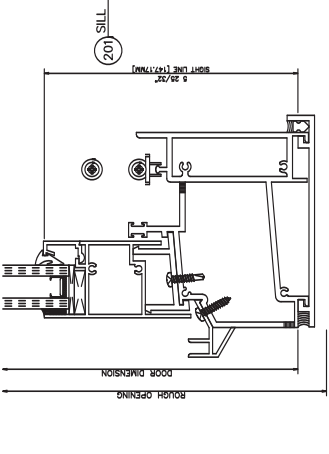
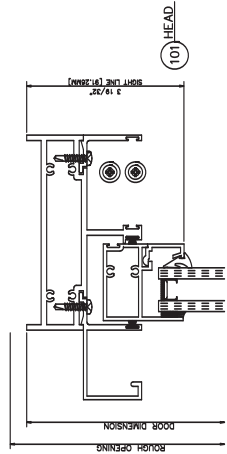
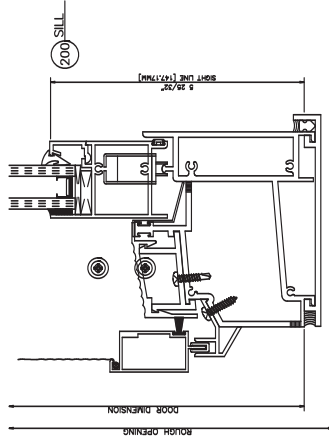
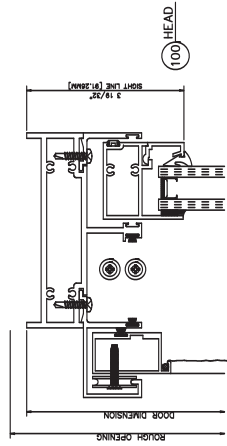
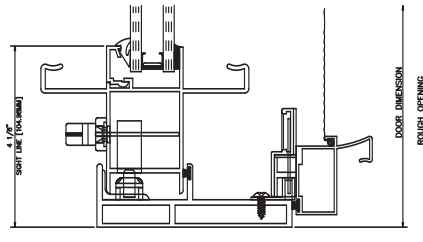


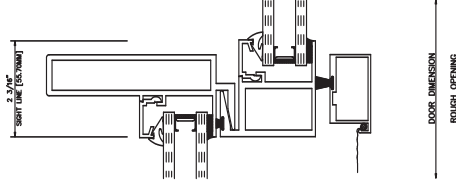
Illustration 2



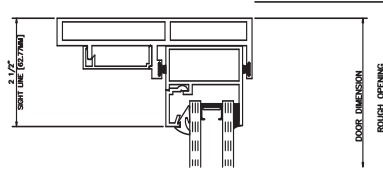
401 JAMB



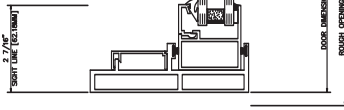
603 MTG. RAIL



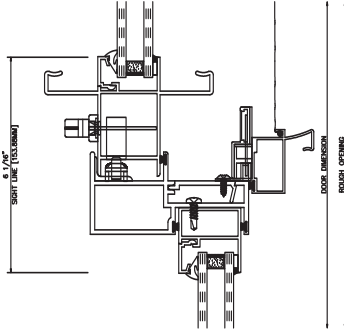
402 JAMB



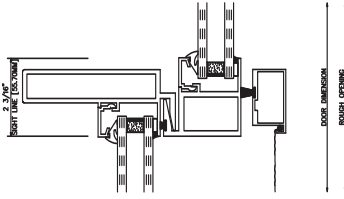
404 LET. JAMB
2 7/8\"/>



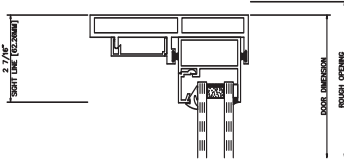
602 MEETING RAIL
6 1/8\"/>



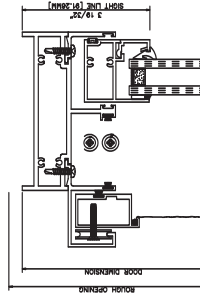
603 MEETING RAIL
2 3/8\"/>



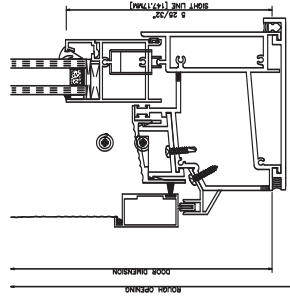
402 RIGHT JAMB
2 7/8\"/>



ROUGH DIMENSION
DOOR DIMENSION

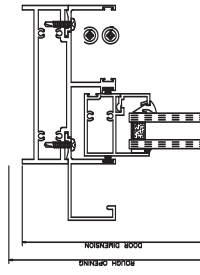


100 HEAD

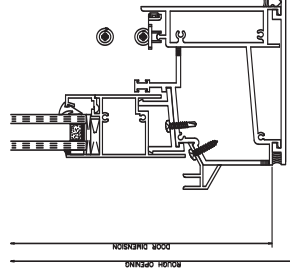


200 SILL

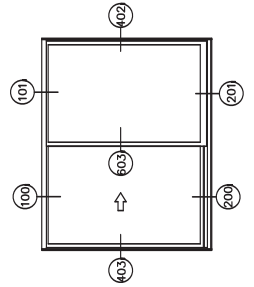
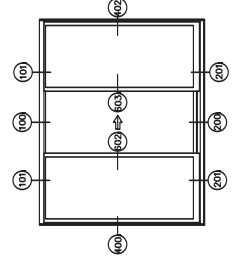
ROUGH DIMENSION
DOOR DIMENSION

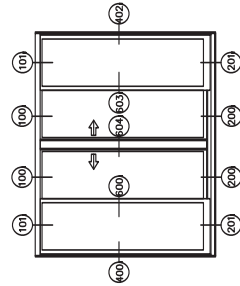
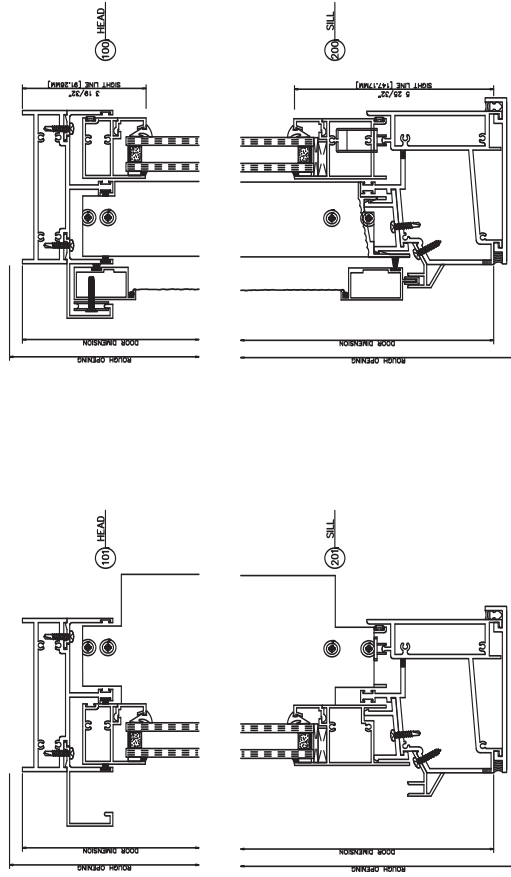
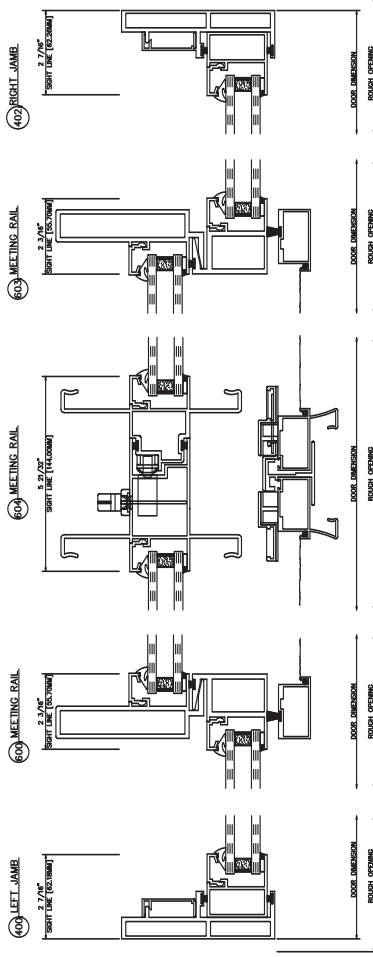


101 HEAD

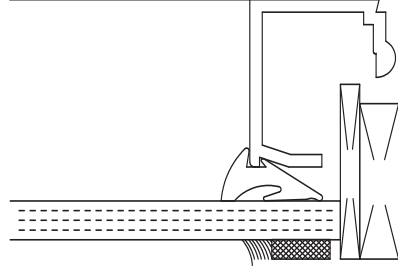


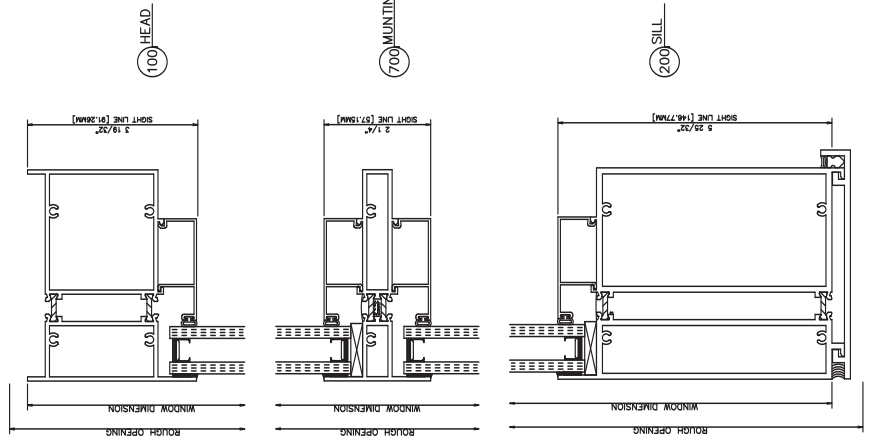
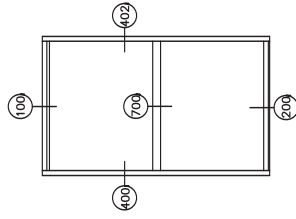
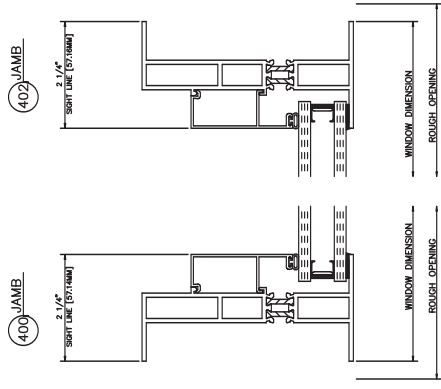
201 SILL



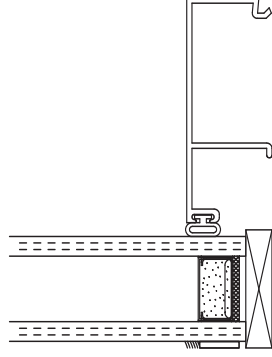


1/4\"/>





1" INSULATED
3/16" - 3/16"



1/2" OPEN
GLAZE

