



IMPACT GRADE



BALLISTIC GRADE



BLAST GRADE



## System 5600 2 1/4" Curtain Wall Thermally Improved System

**Configurations** Outside Glazed • Inside Glazed • 2 or 4-sided Structural Silicone Glazed • Slope Glazed

The 5600 curtain wall system is designed to meet high performance criteria and address aesthetic concerns. Mullions can be offset tongue, center tongue and structural glazed for monolithic or insulated glazing units. This standard wall system provides opportunities for customization by offering face covers from 2" to 6" wide and 3/4" to 8" deep in several profiles.

Manufacturer  
Of  
Architectural  
And  
Commercial  
Grade  
Windows,  
Curtain Walls,  
Entrances,  
And  
Storefronts

### Features

Thermal Isolator used between exterior and interior extrusions

Various mullion depths and widths available

Wide variety of snap-on face covers

Optional corner mullions

Screw spline construction

Shear block construction

Concealed vents

Integral door adaptors

Hip and valley rafters are available with the slope glazed system

Accommodates up to 1 5/8" glazing

Accessory line of perimeter anchors, pocket fillers, door adaptors, etc.

Anodized and painted finishes available

### Benefits

Improved thermal performance

Provides design flexibility

Customize projects with face covers of various depths and profiles

Allows 90° and 135° inside and outside corners

Allows assembly of sections prior to installation  
Decreases installation time

Ability to erect on the job site

Ability to include ventilation while maintaining the exterior sight line

Compatible with all 1 3/4" EFCO entrances  
Contact EFCO Applications Department for 2" entrances

Enables complex, slope corner transitions

Expands design and energy saving options

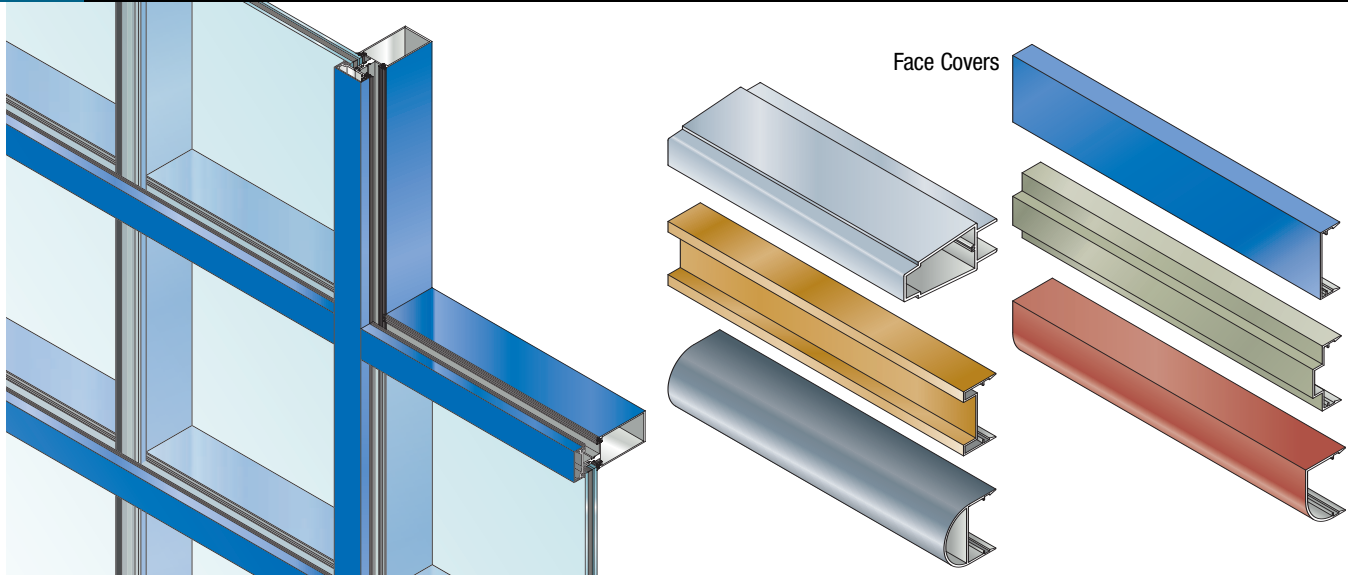
Increased product versatility

Unlimited options to answer economic and aesthetic concerns

EFCO CORPORATION  
1000 COUNTY RD  
MONETT, MO 65708  
800.221.4169



# System 5600 2 1/4" Curtain Wall Thermally Improved System



## Performance Data

Series 5600 Outside Glazed Curtain Wall	
Air Infiltration	<.06 cfm/sf @ 6.24 psf
Water	No Leakage >15.0 psf
Structural	See wind load charts
CRF-Frame (1503-98)	67A,E
CRF-Glass (1503-98)	65A,E
U-Value (1503-98)	.53A,E
U-Value (NFRC-102)	.49E
STC (E 90-02)	29

Series 5600 Inside Glazed Curtain Wall	
Air Infiltration	<.06 cfm/sf @ 6.24 psf
Water	No Leakage @ 15.0 psf
Structural	See wind load charts
CRF-Frame (1503-98)	67A,E
CRF-Glass (1503-98)	65A,E
U-Value (1503-98)	.53A,E
U-Value (NFRC-102)	.49A,E
STC (E 90-02)	29A

Series 5600 Concealed Vent	
Air Infiltration	<.30 cfm/sf @ 6.24 psf
Water	No Leakage >15.0 psf
Structural	See wind load charts
CRF-Frame (1503-98)	57E
CRF-Glass (1503-98)	63E
U-Value (1503-98)	.68E
STC (E 90-02)	30

Series 5600 2-Sided or 4-Sided Structural Glazed Curtain Wall	
Air Infiltration	<.06 cfm/sf @ 6.24 psf
Water	No Leakage >15.0 psf
Structural	See wind load charts
CRF-Frame (1503-98)	67A,E
CRF-Glass (1503-98)	65A,E
U-Value (1503-98)	.53A,E
U-Value (NFRC-102)	.49A,E
STC (E 90-02)	29A

Series 5600 Slope Glazed Curtain Wall	
Air Infiltration	<.06 cfm/sf @ 6.24 psf
Water	No Leakage @ 10.0 psf
Structural	See wind load charts
CRF-Frame (1503-98)	67A,E
CRF-Glass (1503-98)	65A,E
U-Value (1503-98)	.53A,E
U-Value (NFRC-102)	.47A,E
STC (E 90-02)	29A

A = Estimated values and/or designations  
 B = Non-standard size or configuration  
 C = Dual glazed  
 D = 1" Insulated - 1/4" clear, 1/2" air, 1/4" clear  
 E = 1" Insulated - 1/4" clear (Low Emissivity), 1/2" air, 1/4" clear  
 F = 1" Insulated - 1/4" clear (Low Emissivity), 1/2" argon, 1/4" clear  
 G = 1" Insulated - 1/4" clear, 1/2" air, 1/4" clear (Low Emissivity)

EFCO certifies Series 5600 2, 2 1/2, 3, 4, 5, and 6" wide systems meet the above air (ASTM E 283) and water (ASTM E 331) performance. Contact EFCO for more information.

Available System Depths	System Depth				
	5"	6"	7"	8"	9"
Outside Glazed	A	A	A	A	A
Inside Glazed	A	A	A		
2- and 4-Sided Structural Glazed	A	A	A	A	A
Slope Glazed	A	A	A	A	

A - Available System Depth  
 blank - N/A

Integral S-5600 Glazing Chart		Polycarbonate			Glass or Panel																
		1/8"	3/16"	1/4"	1/8"	.156**	3/16"	.200**	1/4"	1/4"***	1/2"	5/8"	3/4"	7/8"	1"	1-1/8"	1-1/4"	1-1/2"	1-3/4"	2"	
Outside Glazed	Monolithic Glass	C	C	A	C	C	C	C	A	A	A	C	C	C							
	Insulated Glass														A	C	A				
Inside Glazed	Monolithic Glass			A					A	A	A										
	Insulated Glass														A		A				
Structural Glazed	Monolithic Glass			A					A	A	A										
	Insulated Glass														A						
Slope Glazed	Monolithic Glass			A					A	A	A										
	Insulated Glass														A						

\*-Obscure Glass Thickness  
 \*\*-Laminated Glass Thickness  
 A - Available Glazing Option  
 C - Custom pressure plate, adaptor and/or gasket required  
 blank - N/A

# System 5600

## 2 1/4" Curtain Wall Thermally Improved System



### Frame Construction

Series 5600 curtain wall has various system depths. Sight lines are nominally 2 1/4" and present a clean, attractive appearance. Members are extruded from 6063-T6 aluminum alloy, and the nominal material wall thickness is .093" to .125". Joint construction utilizes the shear block method. See Illustration 1.

### Concealed Vent Construction

Series 5600 curtain wall has optional concealed vents that utilize screw spline construction.

### Thermal Barrier

Series 5600 curtain wall members are thermally improved using vinyl gasket to isolate exterior and interior extrusions.

### Sunshade Information

Series 5600 curtain wall has optional sunshades available in five standard depths. Sunshade blades available in various sizes. Members are extruded from 6063-T6 aluminum alloy. Sunshade clips and arms are fabricated on a CNC machine. Joint construction utilizes screw spline construction.

\*Note: Structural design loads will determine the sunshade depth and clip spacing limitations.

### Glazing Charts

Series 5600 curtain wall can be glazed from the interior or the exterior. It is "dry glazed" with preset and drive-in EPDM gasket. Series 5600 accommodates 1/4" to 1 1/4" infill panels. Dual glazing is available with internal blinds.

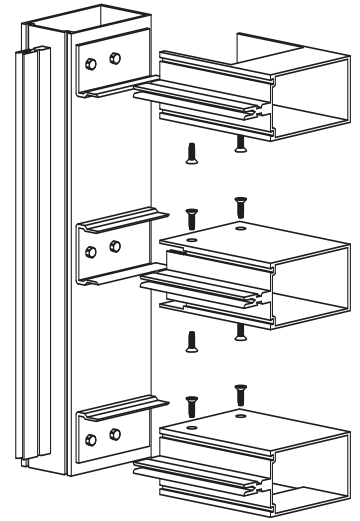
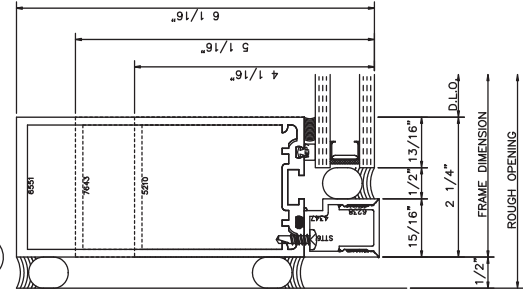


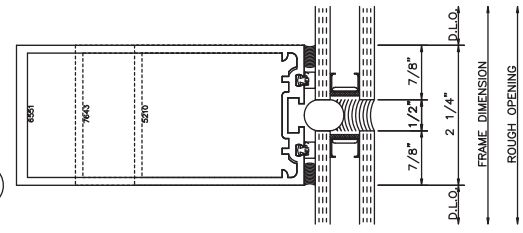
Illustration 1



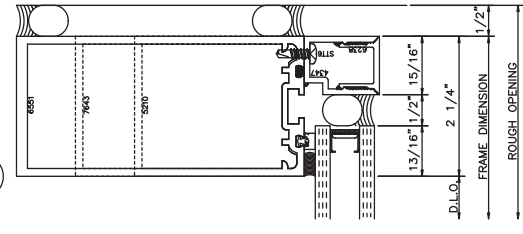
316 LEFT JAMB



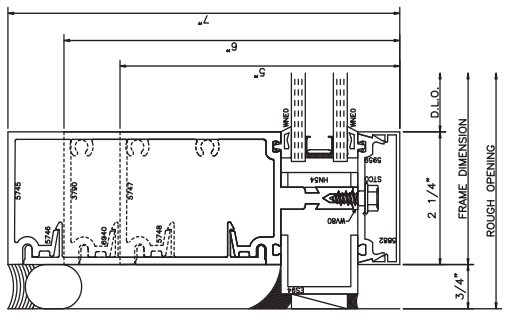
659 VERTICAL



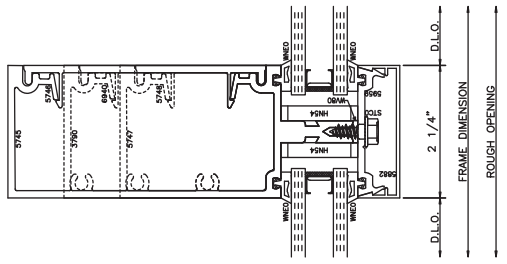
317 RIGHT JAMB



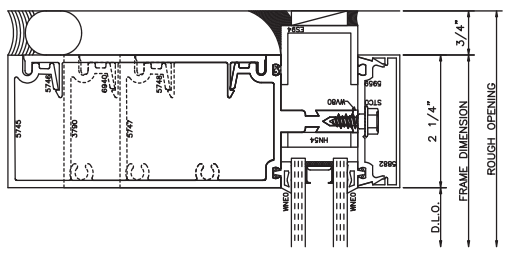
494 LEFT JAMB



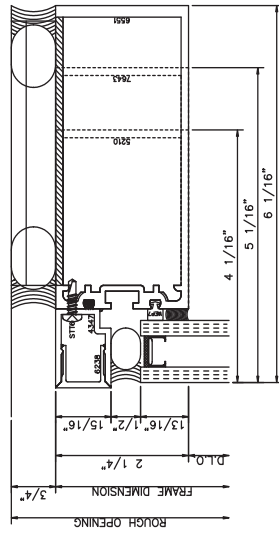
673 VERTICAL



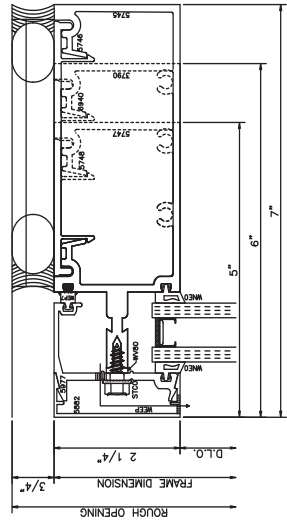
495 RIGHT JAMB



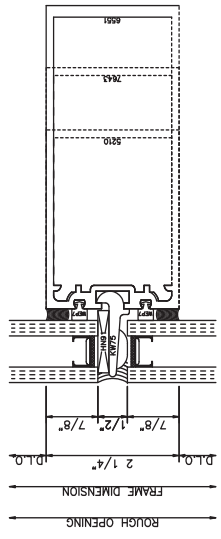
151 HEAD



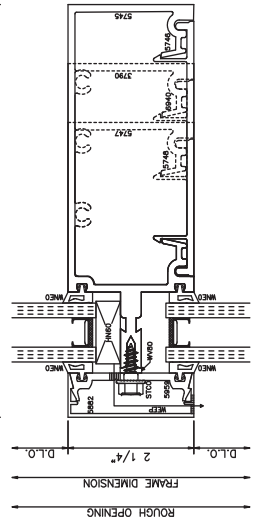
161 HEAD



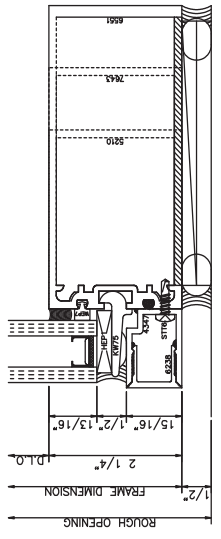
558 HORIZONTAL



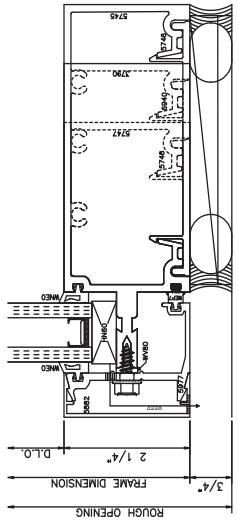
572 HORIZONTAL



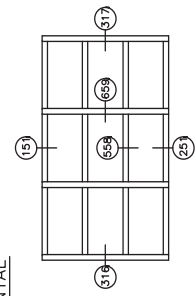
251 SILL



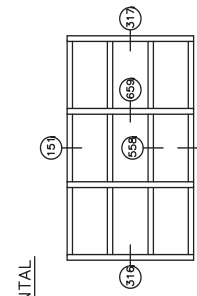
261 SILL



15



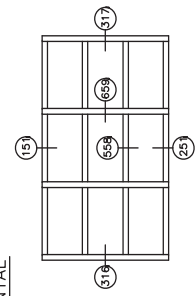
558



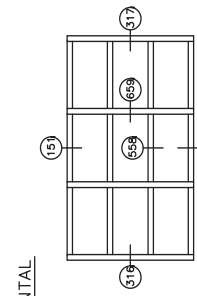
251



161



572



261



**5600 Structural Silicone Glazed**

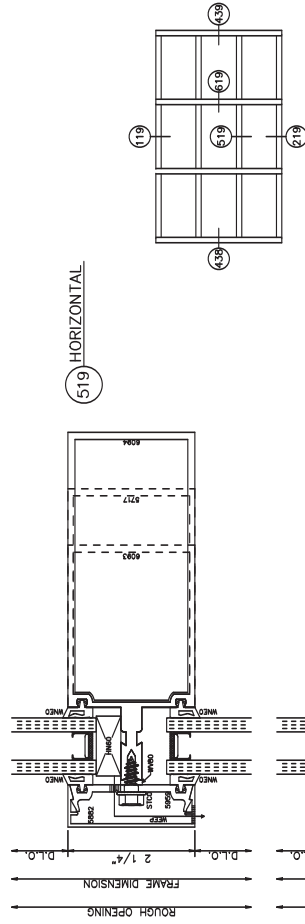
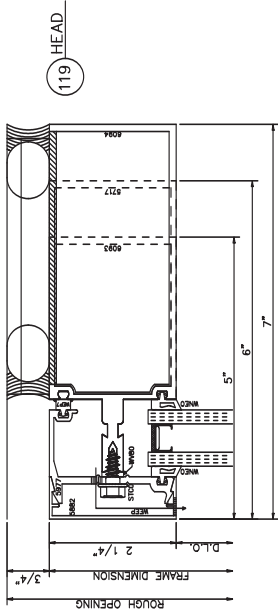
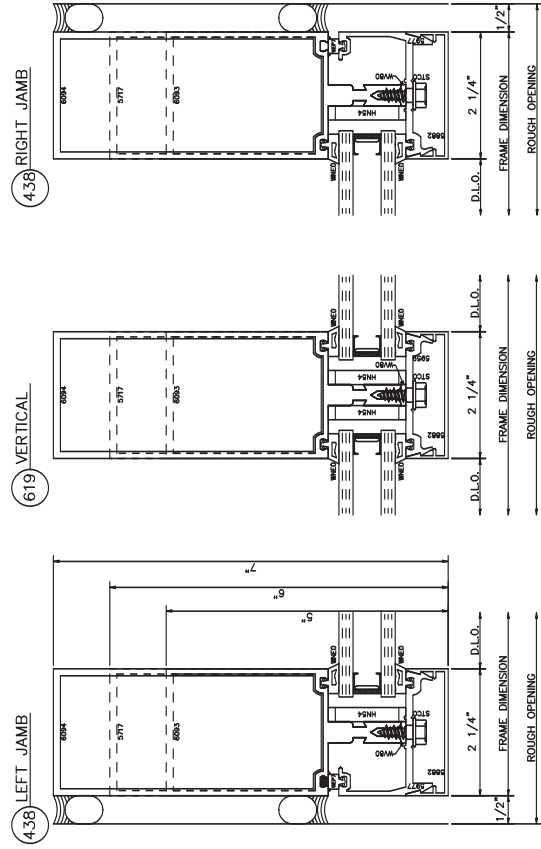
2 1/4" x 5", 6", 7"

**5600 Screw Spine Center Toning**

2 1/4" x 5", 6", 7"

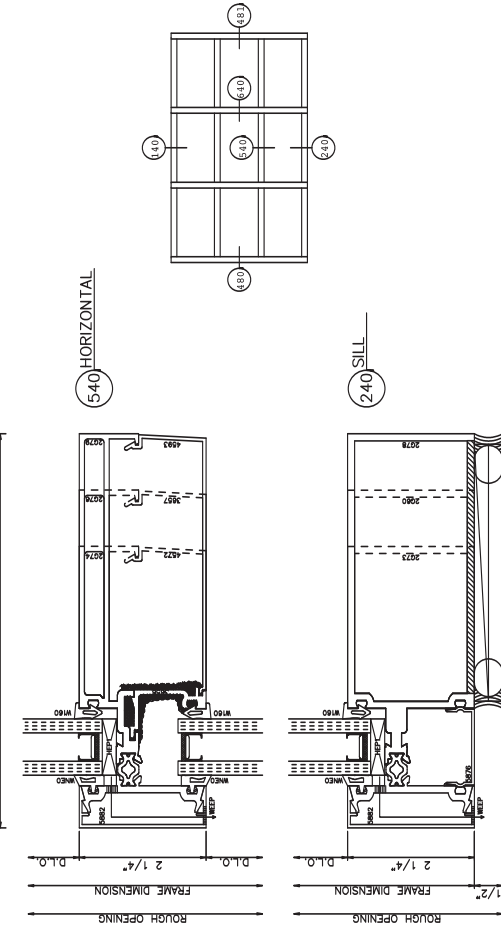
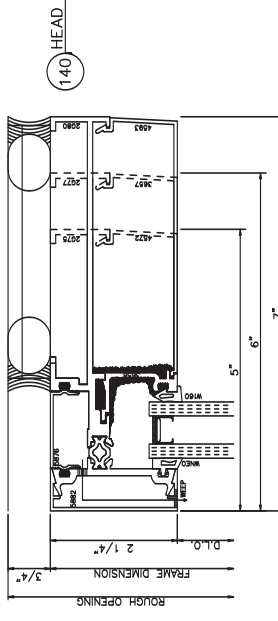
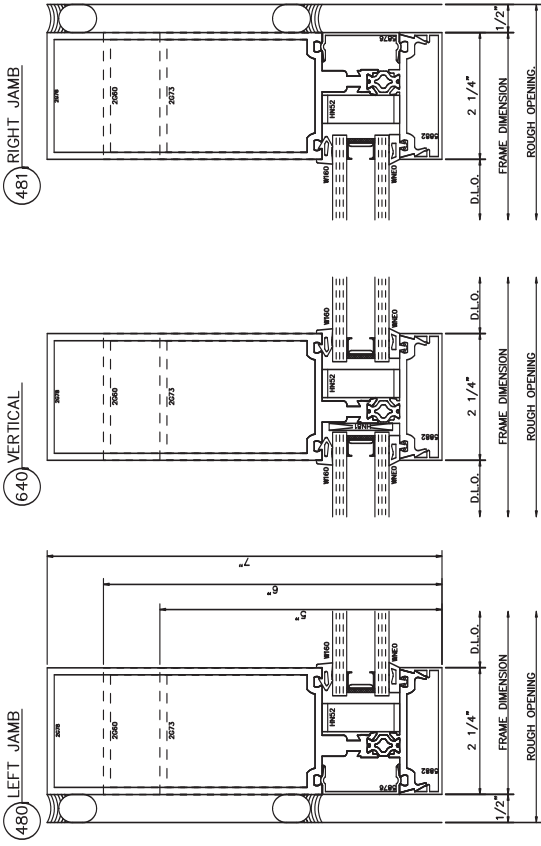
**5600 Shear Block Center Toung**

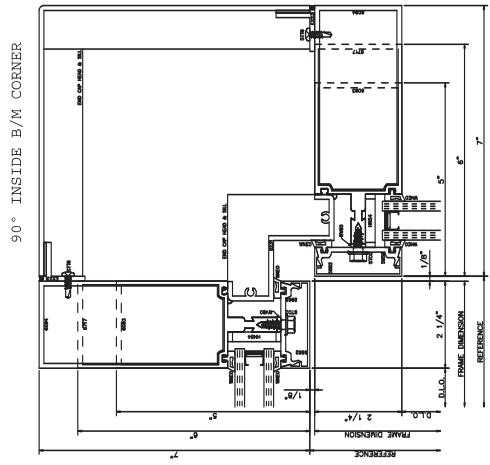
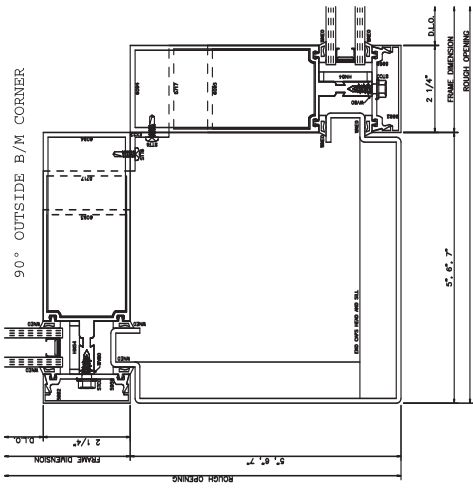
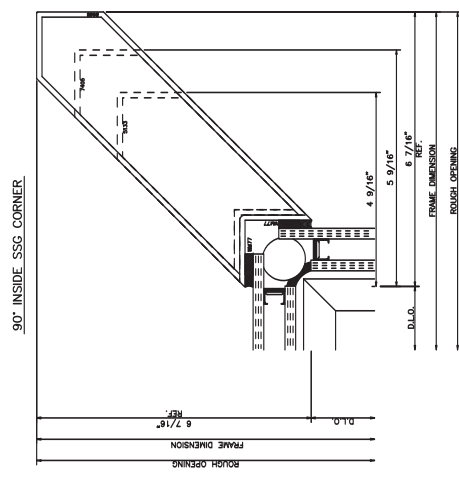
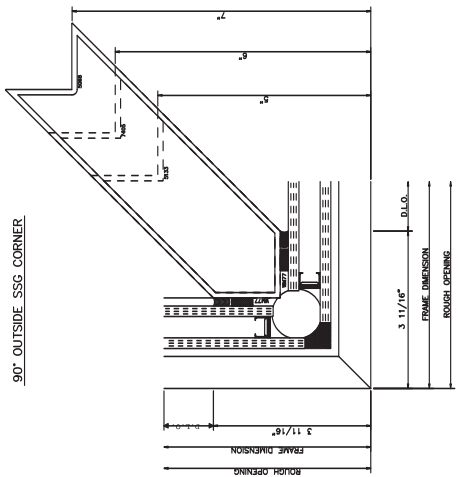
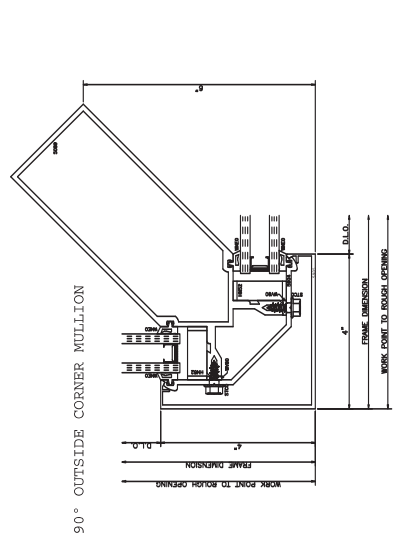
2 1/4" x 5", 6", 7"



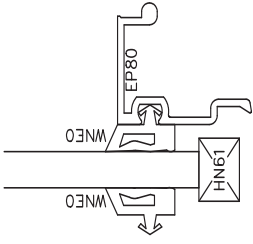
**5600 Offset Toung Insulbar**

2 1/4" x 5", 6", 7"

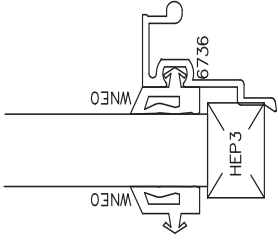




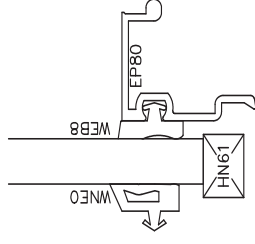
1/4" GLAZING



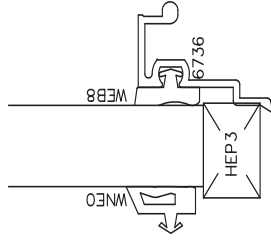
1/2" GLAZING



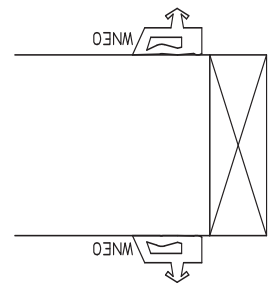
5/16" GLAZING



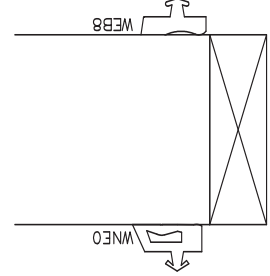
9/16" GLAZING



1 1/4" GLAZING



1 5/16" GLAZING



1/4" GLAZING

