



System 5500 **2 1/4" Curtain Wall Thermal E-Strut™ System**

Configurations Outside Glazed • Inside Glazed • 2 or 4-sided Structural Silicone Glazed

The 5500 curtain wall system is designed to meet the most demanding performance specifications. System 5500 utilizes the E-Strut thermal isolator, providing outstanding thermal properties and a total composite shape for enhanced structural performance. System 5500 offers dual finish capability to meet any design finish specification, and also provides significant labor reductions; there is no pressure plate or cover to assemble like conventional curtain wall framing.

Manufacturer
Of
Architectural
And
Commercial
Grade
Windows,
Curtain Walls,
Entrances,
And
Storefronts

Features

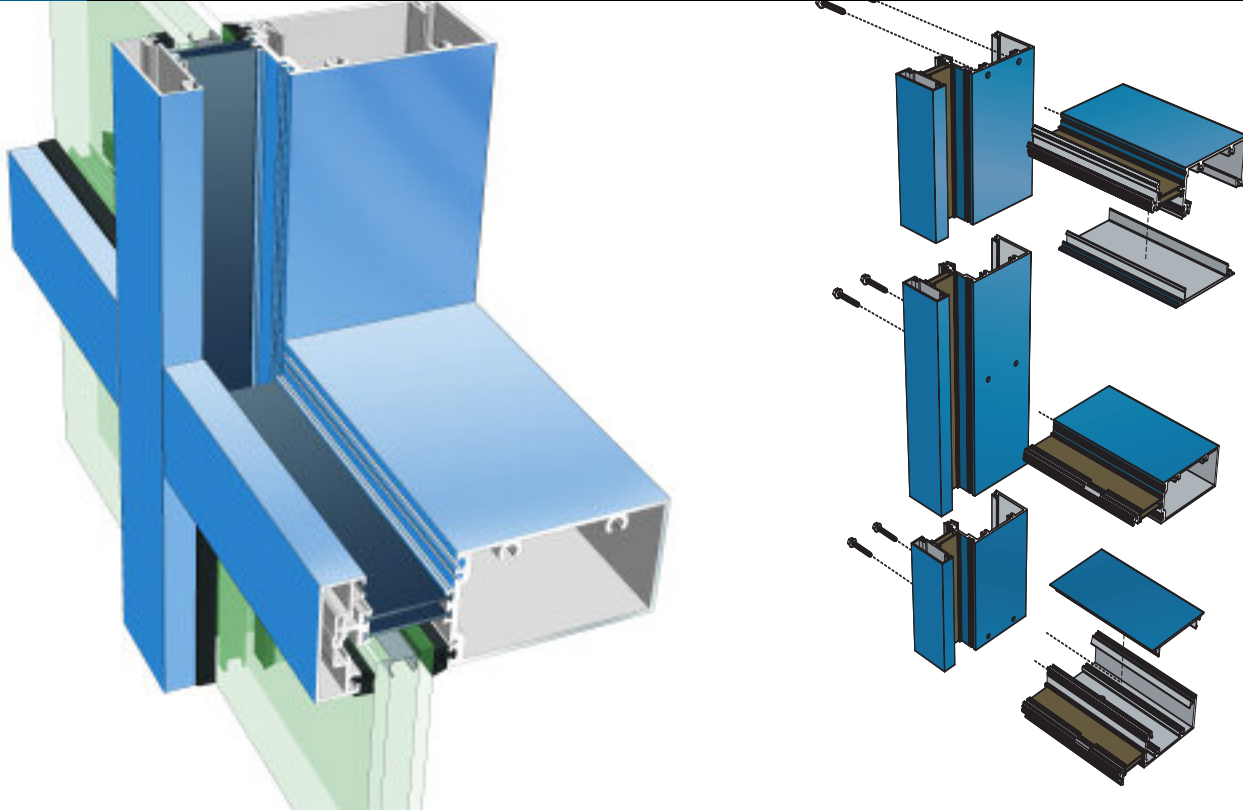
Benefits

E-Strut™ thermal isolator	Improves U-Value performance Dual finish capability Completely eliminates dry shrinkage
Various mullion depths available	Design flexibility
Mullion anchors are not required for "standard" construction	Easier installation
Screw spline construction	Allows assembly of sections prior to installation Decreases installation time
Temporary glazing clips are not required	Field glazing is quicker Less field labor required
Composite mullion	Eliminates traditional screw-on pressure plate and snap-on cover
Integral door adaptors	Compatible with all 1 3/4" EFCO entrances Contact EFCO Applications Department for 2" entrances
Accommodates up to 1" glazing	Expands design and energy savings options
Splices and internal steel reinforcement	Multi-span capability
Accessory line of perimeter anchors, pocket fillers, door adaptors, etc.	Increased product versatility
Optional corner mullions	Allows 90° and 135° outside corners
Concealed vents	Ability to include ventilation while maintaining the exterior sight line
Wide variety of snap-on face covers	Customize projects with face covers of various depths and profiles
Anodized and painted finishes available	Unlimited options to answer economic and aesthetic concerns



System 5500

2 1/4" Curtain Wall Thermal E-Strut™ System



Performance Data

Series 5500 Outside Glazed Curtain Wall

Air Infiltration	<.06 cfm/sf @ 6.24 psf
Water	No Leakage > 15.0 psf
Structural	See Windload Charts
CRF-Frame (1503-98)	79 [°] _E
CRF-Glass (1503-98)	75 [°] _E
U-Value (1503-98)	.39 [°] _E
U-Value (NFRC-102)	.37 [°] _E
STC (E 90-02)	30 [°] _E

Series 5500 Inside Glazed Curtain Wall

Air Infiltration	<.06 cfm/sf @ 6.24 psf
Water	No Leakage @ 15.0 psf
Structural	See Windload Charts
CRF-Frame (1503-98)	79 [°] _E
CRF-Glass (1503-98)	75 [°] _E
U-Value (1503-98)	.39 [°] _E
U-Value (NFRC-102)	.37 [°] _E
STC (E 90-02)	30 [°] _E

A = Estimated values and/or designations

B = Non-standard size or configuration

C = Dual glazed

D = 1" Insulated - 1/4" clear, 1/2" air, 1/4" clear

E = 1" Insulated - 1/4" clear (Low Emissivity), 1/2" air, 1/4" clear

F = 1" Insulated - 1/4" clear (Low Emissivity), 1/2" argon, 1/4" clear

G = 1" Insulated - 1/4" clear, 1/2" air, 1/4" clear (Low Emissivity)

Series 5500 Structural Glazed Curtain Wall

Air Infiltration	<.06 cfm/sf @ 6.24 psf
Water	No Leakage > 15.0 psf
Structural	See Windload Charts
CRF-Frame (1503-98)	79 [°] _E
CRF-Glass (1503-98)	75 [°] _E
U-Value (1503-98)	.39 [°] _E
U-Value (NFRC-102)	.37 [°] _E
STC (E 90-02)	30 [°] _E

Series 5500 Concealed Vent

Air Infiltration	<.06 cfm/sf @ 6.24 psf
Water	No Leakage > 15.0 psf
Structural	See Windload Charts
CRF-Frame (1503-98)	57 [°] _E
CRF-Glass (1503-98)	63 [°] _E
U-Value (1503-98)	.68 [°] _E
U-Value (NFRC-102)	.61 [°] _E
STC (E 90-02)	30 [°] _E

Available System Depths

System Depth

	6"	7"	8"
Outside Glazed	A	A	A
Inside Glazed	A	A	A
2- and 4-Sided Structural Glazed	A	A	A

A - Available System Depth
blank - N/A

S-5500 Glazing Chart

	1/8"	3/16"	1/4"	5/16"	3/8"	7/16"	1/2"	9/16"	5/8"	11/16"	3/4"	13/16"	7/8"	15/16"	1"	1-1/16"	1-1/8"
Outside Glazed	A	A	S	A	A	A	S	A	A				A	A	S	A	A
Inside Glazed	A	A	S	A	A								A	A	S	A	A
Structural Glazed			S	A											S	A	

*-Obscure Glass Thickness
**-Laminated Glass Thickness

A-Available Glazing Option
S-Standard Glazing
blank - N/A

System 5500

2 1/4" Curtain Wall Thermal E-Strut™ System



Frame Construction

System 5500 curtain wall has various system depths. Sight lines are nominally 2 1/4" and present a clean, attractive appearance. Members are extruded from 6063-T6 aluminum alloy, and the nominal material wall thickness is .070" to .125". Joint construction utilizes the screw spline method. See Illustration 1.

Thermal Barrier

System 5500 curtain wall mullions are thermally isolated with two thermal struts, consisting of hollow glass reinforced polyimide nylon, mechanically crimped in raceways that are extruded in the exterior and interior members.

Glazing Charts

System 5500 curtain wall can be glazed from the interior or the exterior. It is "dry glazed" with preset and drive-in EPDM gasket. System 5500 accommodates 1/4" to 1" infill panels.

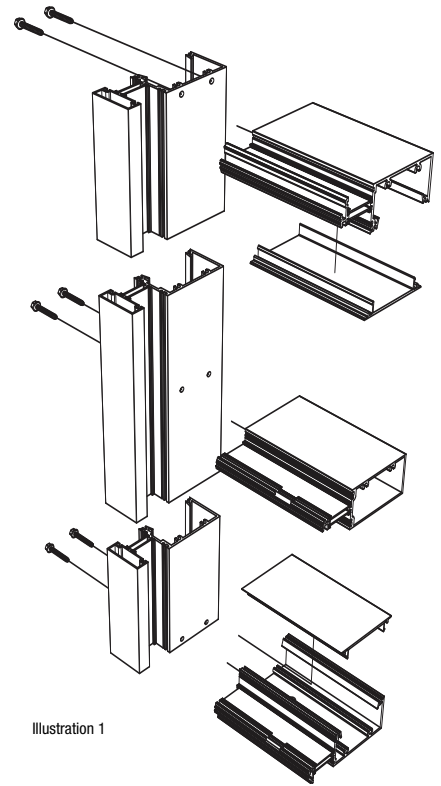
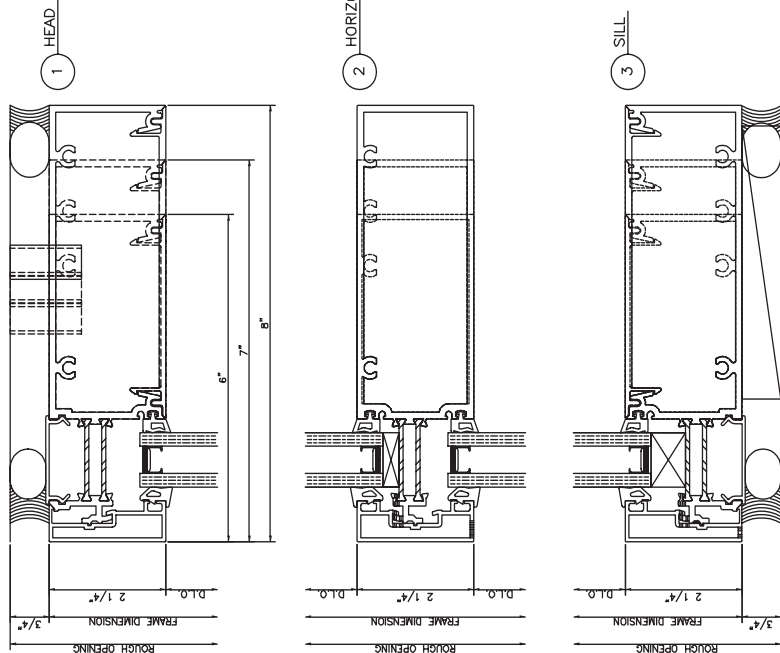
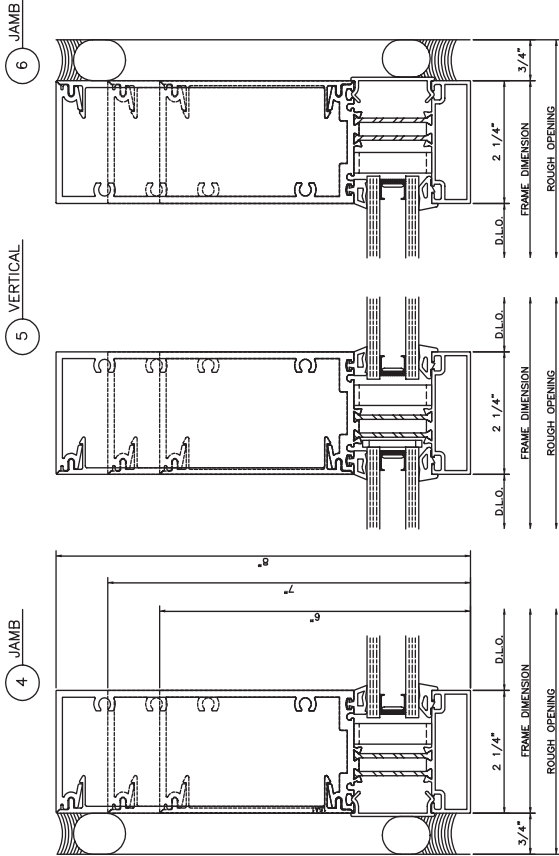
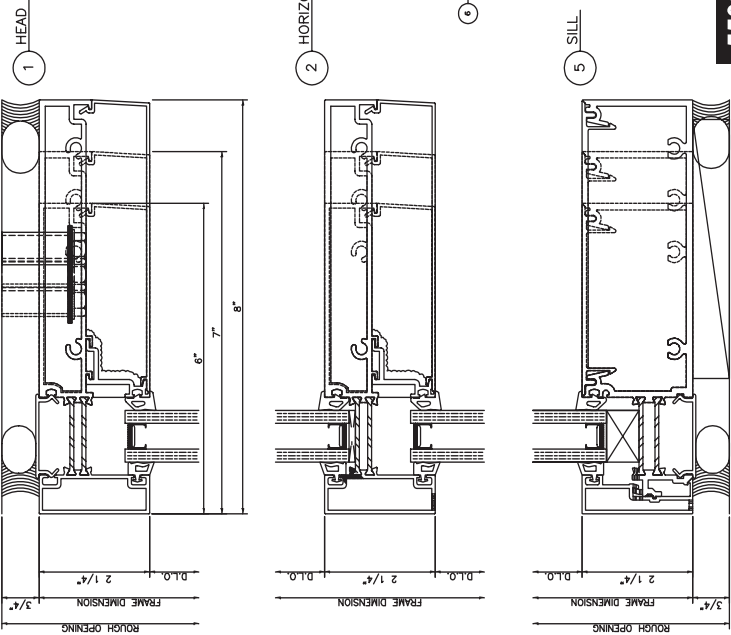
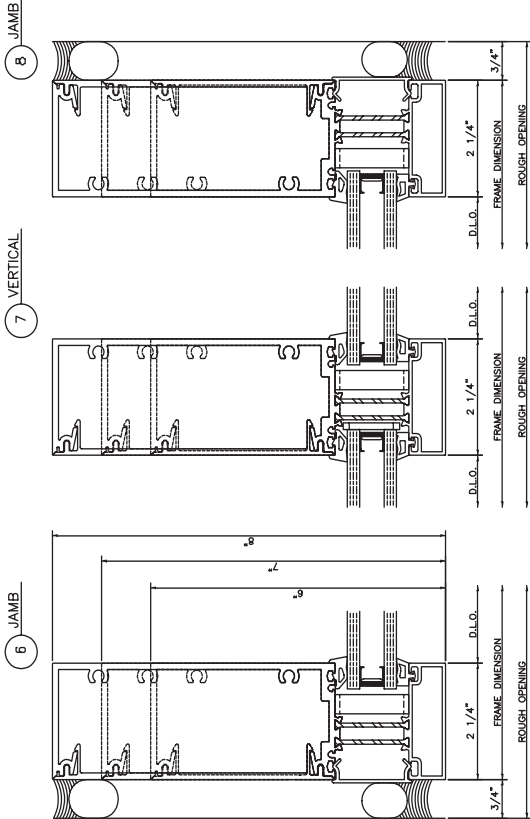


Illustration 1



5500 Outside Glazed

2 1/4" x 6", 7", 8"

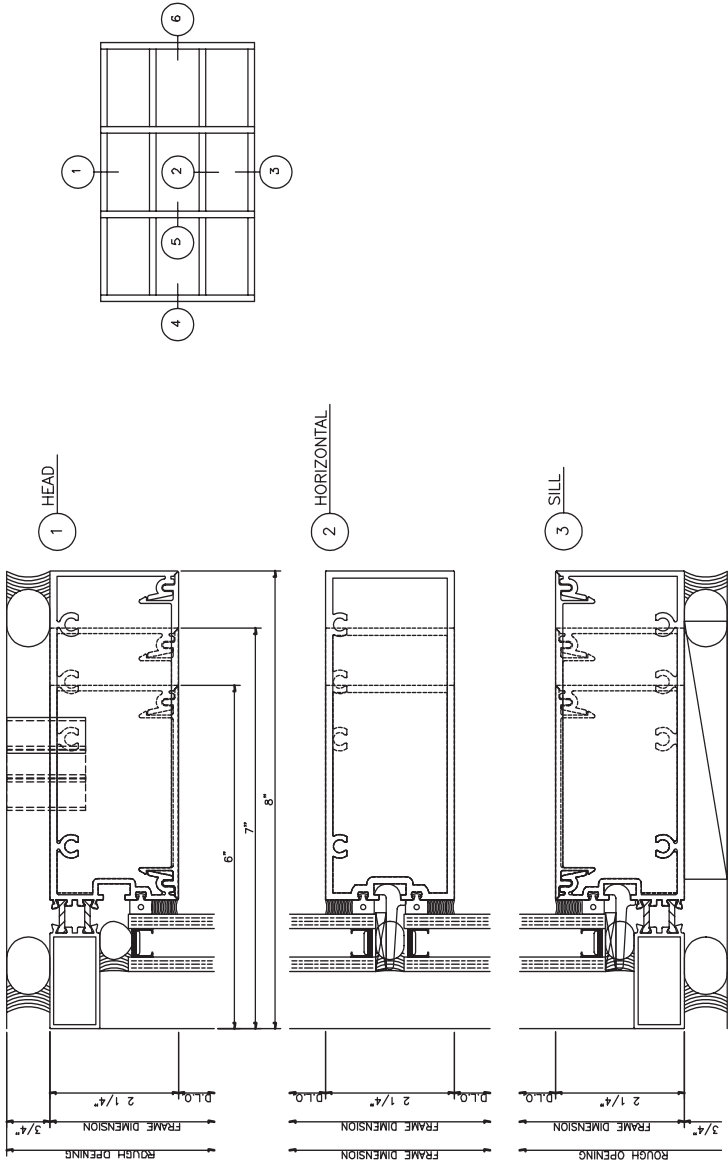
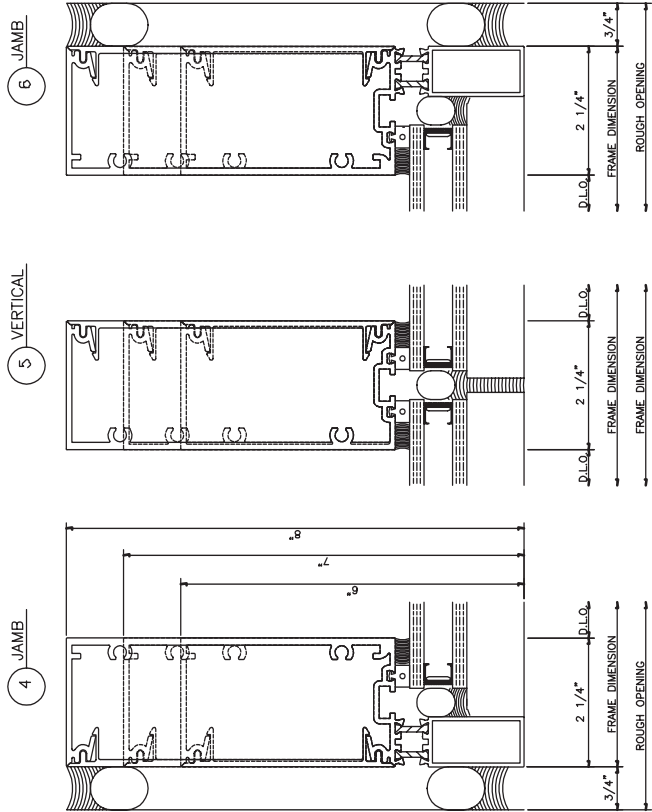


5500 Inside Glazed

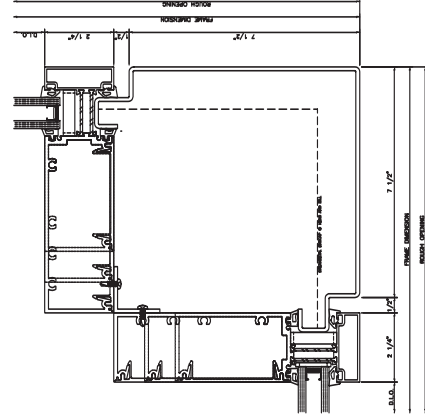
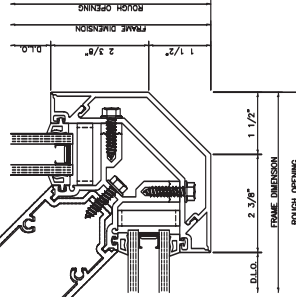
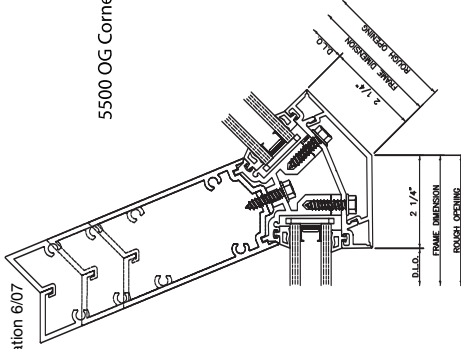
2 1/4" x 6", 7", 8"

5500 Structural Silicone Glazed

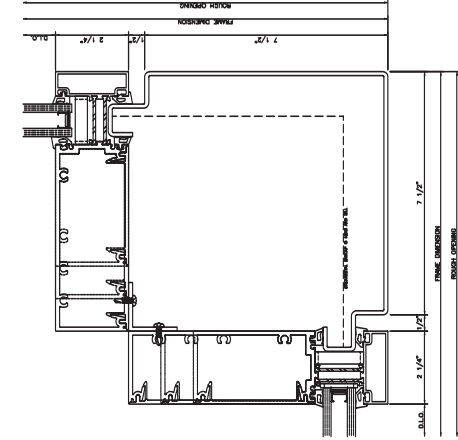
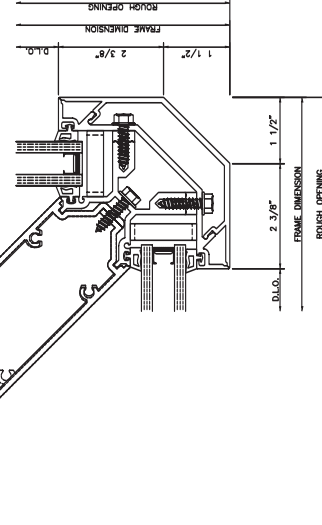
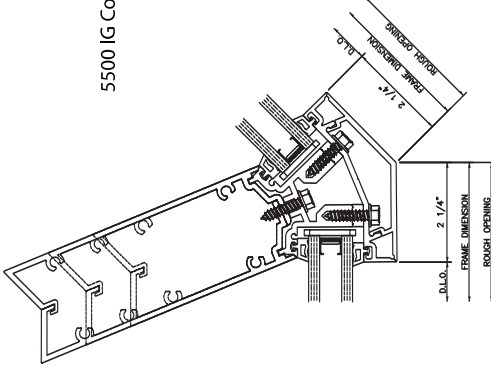
2 1/4" x 6", 7", 8"



5500 OG Corner



5500 IG Corner



5500 SSG Corner

