

IMPACT GRADE



**Series 700 • Series 7000\*  
4" Heavy Commercial Roto-Vent™ Rotating Ventilator Window**

**Configurations** Roto-Vent • Fixed

\*IMPACT GRADE

Series 700 and 7000 retain an AAMA Heavy Commercial rating to meet the most demanding specifications. This product is designed for educational, office or healthcare facilities where ventilation is required without the opening of the window. The 700 Rotating ventilators are thermally improved using a two-part high density polyurethane. The 7000 series fixed lite window is offered in conjunction with the 700 Roto-Vent ventilators. The 700 Roto-Vent can be used in both thermal and non-thermal storefront applications.

Manufacturer  
Of  
Architectural  
And  
Commercial  
Grade  
Windows,  
Curtain Walls,  
Entrances,  
And  
Storefronts

**Features**

**Benefits**

Thermal barrier in frame consisting of two part, high density polyurethane

Improves U-Value performance and enhances energy saving potential

Dual glazing with optional integral blinds

Improved energy savings and interior light or privacy control with low maintenance

Five rows of weather stripping

Yields superior air and water performance

Vertical or horizontal stacking members

Increases configuration options

Screen inside the ventilator

Allows air flow in a secure environment

Accessory line of subframes, mullions, and architectural sills

Allows custom designs with standard product

Anodized and painted finishes available

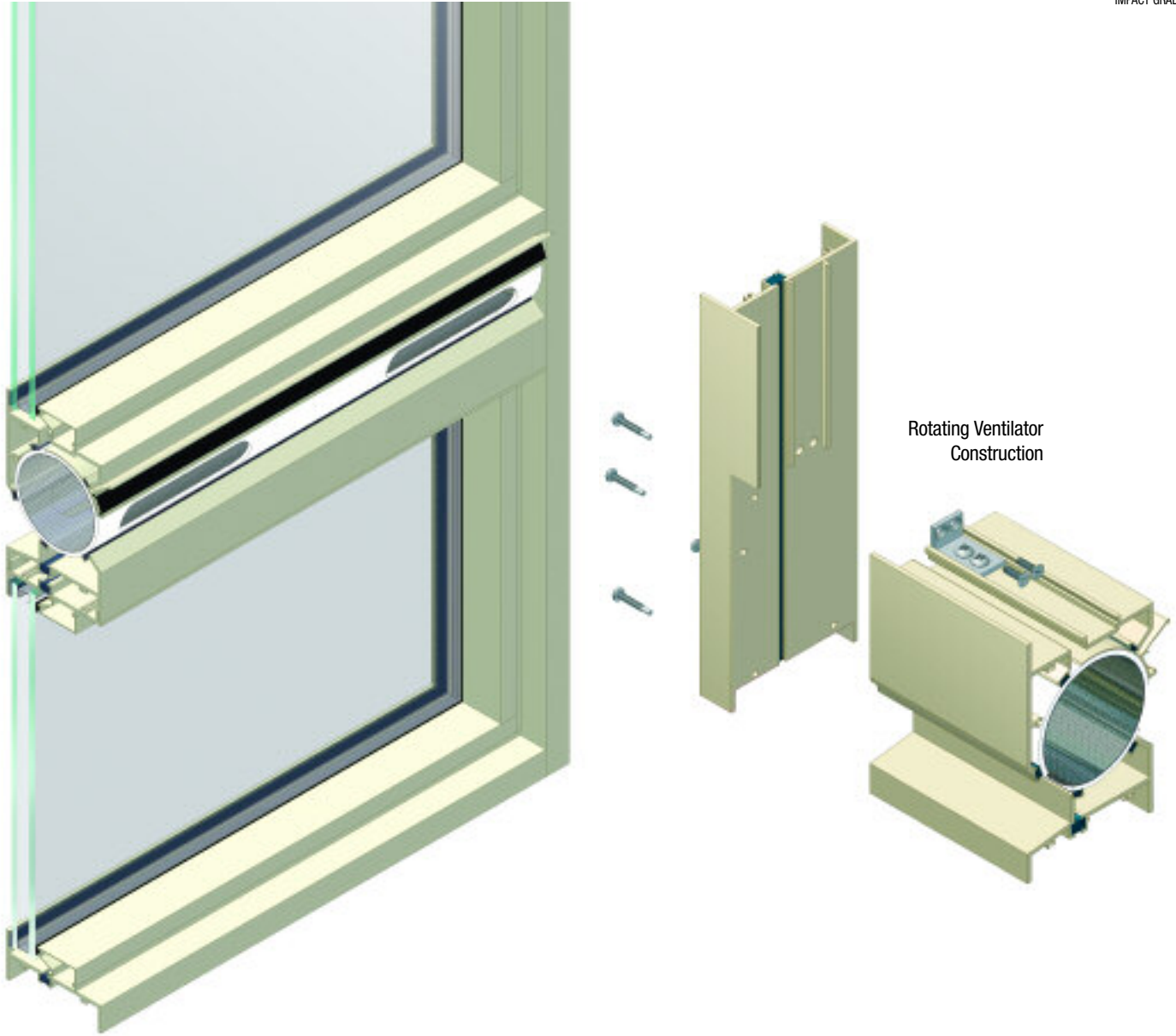
Unlimited options to answer economic and aesthetic concerns

EFCO CORPORATION  
1000 COUNTY RD  
MONETT, MO 65708  
800.221.4169



# Series 700 • Series 7000\* 4" Heavy Commercial Roto-Vent™ Rotating Ventilator Window

\*IMPACT GRADE



Rotating Ventilator Construction

### Performance Data

#### S-700 Roto-Vent

Air Infiltration	<.10 cfm/ft. @ 6.24 psf
Water	No Leakage @ 6.24 psf
Structural	±82.5 psf
CRF-Frame (1503.1)	62°
CRF-Glass (1503.1)	54°
U-Value (1503.1)	.55°

#### S-7000 Fixed Architectural Grade

Rating (NAFS)	F-AW90
Air Infiltration	<.10 cfm/sf @ 6.24 psf
Water	No Leakage @ 15.0 psf
CRF-Frame (1503.1)	68°
CRF-Glass (1503.1)	55°
U-Value (1503.1)	.56°

A = Estimated values and/or designations  
 B = Non-standard size or configuration  
 C = Dual glazed  
 D = 1" Insulated - 1/4" clear, 1/2" air, 1/4" clear  
 E = 1" Insulated - 1/4" clear (Low Emissivity), 1/2" air, 1/4" clear  
 F = 1" Insulated - 1/4" clear (Low Emissivity), 1/2" argon, 1/4" clear  
 G = 1" Insulated - 1/4" clear, 1/2" air, 1/4" clear (Low Emissivity)

S-700 or 7000 Glazing Chart		Polycarbonate			Glass or Panel															
		1/8"	3/16"	1/4"	1/8"	.156"	3/16"	.200"	1/4"	1/4"	1/2"	5/8"	3/4"	7/8"	1"	1-1/8"	1-1/4"	1-1/2"	1-3/4"	2"
Monolithic & Insulated Glass			A	A		A	A	A	A	A		A		A	A	A	A	A	A	A
Dual Glazing	Exterior Lite		I	I			I	I	I	I		I	I		I					
	Interior Lite						A	A	A											

\*-Obscure Glass Thickness  
 \*\*-Laminated Glass Thickness  
 A - Available Glazing Option  
 I - Internal Blinds Can Be Used With This Type of Dual Glazing  
 blank - N/A

# Series 700 • Series 7000\* 4" Heavy Commercial Roto-Vent™ Rotating Ventilator Window



\*IMPACT GRADE

## Frame Construction

The frames have a depth of 4" and are constructed of 6063-T6 aluminum alloy. Nominal material wall thickness for the frame is .125". Corners are of screw spline construction and sealed.

## Rotating Ventilator Construction

The rotating ventilator is fabricated from 3 1/2" PVC tubing. Ventilating slots are 5 1/2" x 1" and the number of slots vary with length of the tube. Ends of the rotating ventilator are sealed against air and water infiltration by injection molded end caps with felt washers. A full length extruded aluminum lift handle facilitates operation of the vent and is finished to match the window. When in the closed position, no PVC is visible from the interior.

## Weather Stripping

All rotating ventilators are weather-stripped with five full-length strips of FIN-SEAL® wool pile and Poly-Pile®. Two holes or slots through the window frame facilitate weepage.

## Screens

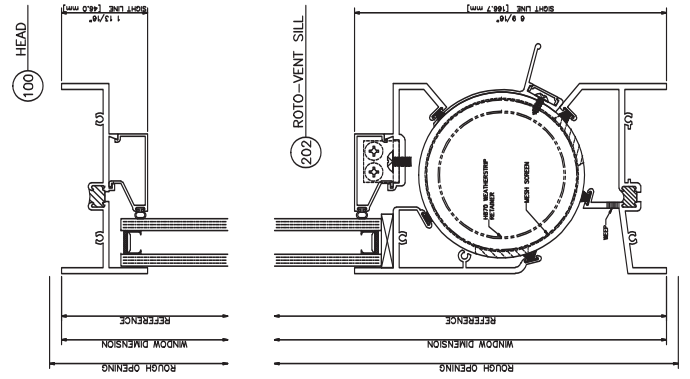
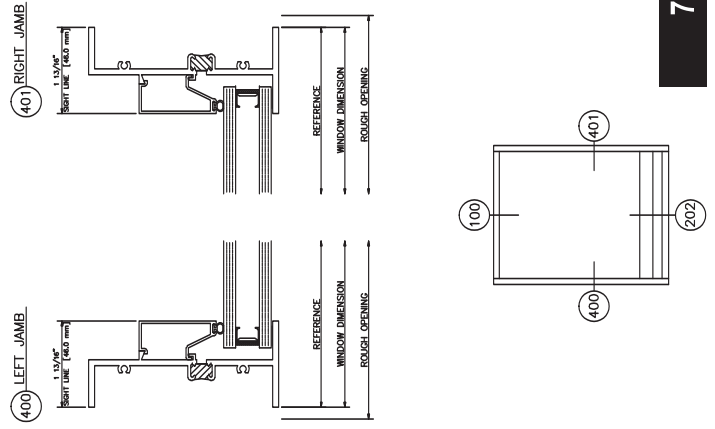
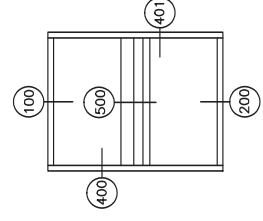
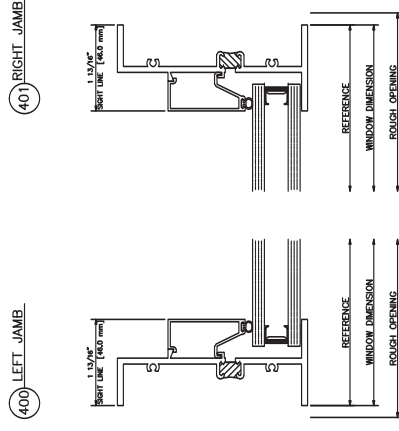
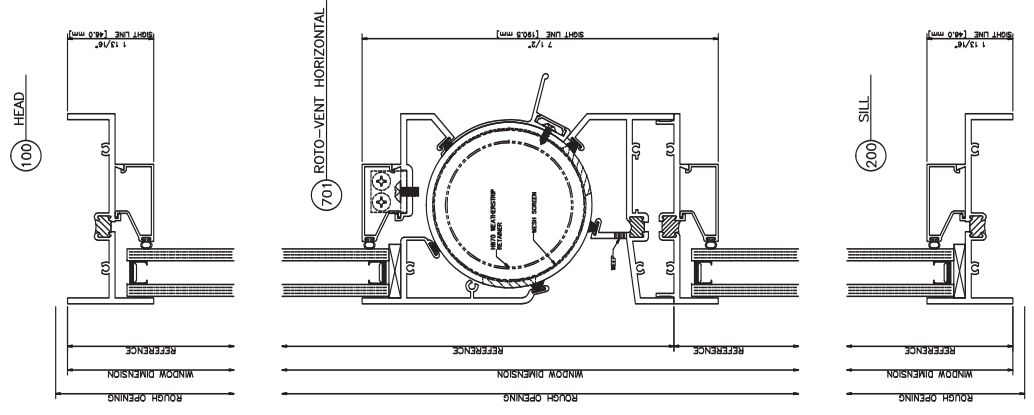
Screen cloth is rolled up and inserted inside the PVC tube. 18 x 18, .017" diameter stainless steel mesh screen is used.

## Thermal Barrier

All frames are thermally improved using the latest technology in two-part, high density polyurethane.

## Glazing

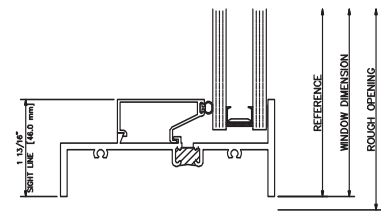
Windows are inside glazed with an extruded aluminum snap-in glazing bead with vinyl gasket. Glazing of 3/16" to 2 1/2" are accommodated. Dual glazing is also available in 3/16" and 1/4" glass. Aluminum blinds between the glass are available with dual glazed windows. See Glazing Chart for exact size.



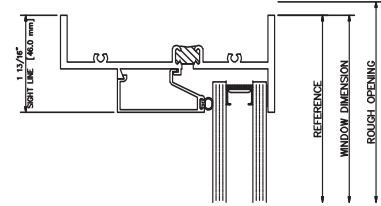
# 7000 Fixed

## Inside Glazed

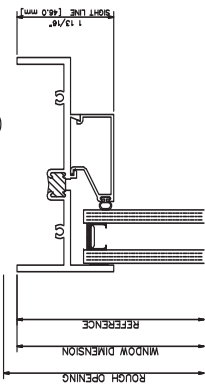
400 LEFT JAMB



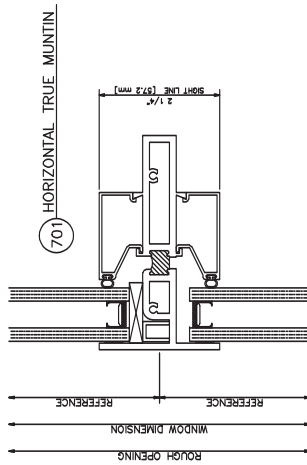
401 RIGHT JAMB



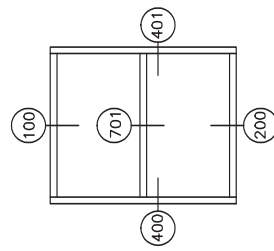
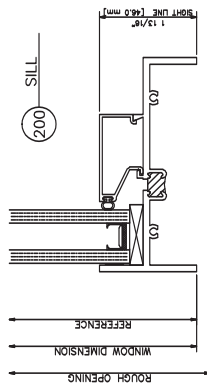
100 HEAD



701 HORIZONTAL TRUE MUNTIN

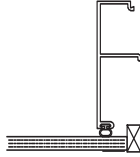


200 SILL

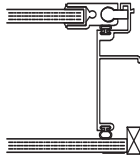


# 700 Glazing

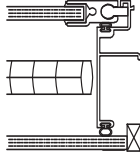
1/4\"/>



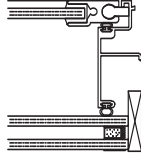
ER65 - 1/4\"/>



ER65 - 1/4\"/>



ER65 - 3/16\"/>



1 1/8\"/>

