

IMPACT GRADE



Series 3500 Thermal • Series 3900 Fixed Thermal 3 1/4" Architectural Grade Horizontal Sliding Window

Configurations XO • OX • XOX • OXO • XX • Fixed

Series 3500 retains an AAMA Architectural Grade rating to meet the most demanding specifications. Designed for high-rise residential, condos, educational or healthcare facilities, the 3500 window system is an attractive product for a wide range of applications. Multiple glazing options provide flexibility to meet specific design requirements. A thermal barrier in the frame and sash improves thermal performance enhancing energy saving potential. Offered with a complete line of sub frames, mullions and architectural sills, the 3500 window provides the complete solution for your fenestration needs.

Manufacturer
Of
Architectural
And
Commercial
Grade
Windows,
Curtain Walls,
Entrances,
And
Storefronts

Features

S3500 only - Extrusions are thermally improved

Cam sash design and continuous interlock meeting rails

Dual glazing

Sash glides on tandem steel ball bearing rollers over a raised sill track

Variety of locking and operating hardware

Three sill heights available

Accommodates glazing units from 1/8" to 1" depth

Trim-All™ panning, frame extenders, interior trim and stools available

Screen frames are extruded aluminum alloy are available

Accessory line of subframes, mullions, and architectural sills

Anodized and painted finishes available

Benefits

Enhanced thermal performance

Yields superior air, water, and structural performance

Improved energy savings

The raised sill track minimizes the effect of dirt and debris build-up on the sill

Allows flexibility in design

Water resistance performance customized to project requirements

Expands design and energy saving options

Allows old perimeter frame to remain in place
Debris removal is minimized

Stronger more durable screens

Allows custom designs with standard product

Unlimited options to answer economic and aesthetic concerns

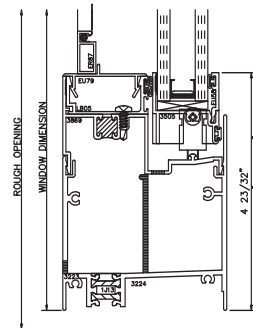
EFCO CORPORATION
1000 COUNTY RD
MONETT, MO 65708
800.221.4169



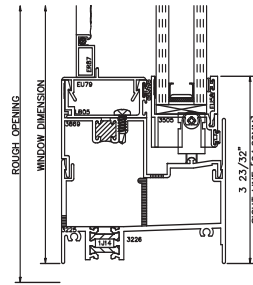
Series 3500 Thermal • Series 3900 Fixed Thermal 3 1/4" Architectural Grade Horizontal Sliding Window



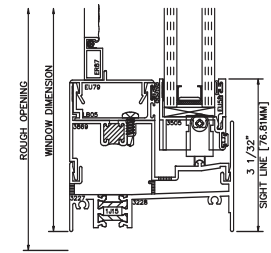
3500 Sill options



Maximum field water rating of 12lbs.



Maximum field water rating of 8lbs.



Maximum field water rating of 6lbs.

Performance Data

S-3500 Horizontal Sliding Window Architectural Grade		HS-AW50
AAMA Rating (NAFS-02)		HS-AW50
Air Infiltration	<.10 cfm/sf @ 6.24 psf	
Water	No Leakage @ 14.0 psf	
Structural	±75.0 psf	
CRF-Frame (1503-98)	.55 ^e	
CRF-Glass (1503-98)	.62 ^e	
U-Value (1503-98)	.56 ^e	
U-Value (NFRC-102)	.54 ^e	

S-3900 Corresponding Fixed Architectural Grade		FW-AW75
AAMA Rating (A440-05)		FW-AW75
Air Infiltration	<.06 cfm/sf @ 6.24 psf	
Water	No Leakage @ 15.0 psf	
Structural	±112.5 psf	
CRF-Frame (1503.1)	.62 ^d	
CRF-Glass (1503.1)	.54 ^d	
U-Value (1503.1)	.54 ^d	

- A = Estimated values and/or designations
- B = Non-standard size or configuration
- C = Dual glazed
- D = 1" Insulated - 1/4" clear, 1/2" air, 1/4" clear
- E = 1" Insulated - 1/4" clear (Low Emissivity), 1/2" air, 1/4" clear
- F = 1" Insulated - 1/4" clear (Low Emissivity), 1/2" argon, 1/4" clear
- G = 1" Insulated - 1/4" clear, 1/2" air, 1/4" clear (Low Emissivity)

S-3500 Hardware Chart	Concealed Plunger Lock	Sweep Lock	Auto Jamb Lock	Pole Ring Sweep Lock	Pole Socket	Access Controlled Sweep Handle	Zinc Plated Steel Ball Bearing Rollers	Stainless Plated Steel Ball Bearing Rollers
Horizontal Sliding	S	0		0		0	S	0

Some size restrictions may apply depending on hardware selected.

0 - Optional
S - Standard
blank - N/A

Horizontal Sliding S-3500 & S-3550 Glazing Chart	Polycarbonate			Glass or Panel																
	1/8"	3/16"	1/4"	1/8"	.156 ^{**}	3/16"	.200 ^{**}	1/4"	1/4 ^{***}	1/2"	5/8"	3/4"	7/8"	1"	1-1/8"	1-1/4"	1-1/2"	1-3/4"	2"	
Monolithic & Insulated Glass				A	A	A	A	A			A	A	A	A						
Dual Glazing	Exterior Lite						A	A	A											
	Interior Lite				A	A	A	A												

*-Obscure Glass Thickness
**-Laminated Glass Thickness
A - Available Glazing Option
I - Internal Blinds Can Be Used With This Type of Dual Glazing
blank - N/A

Series 3500 Thermal • Series 3900 Fixed Thermal 3 1/4" Architectural Grade Horizontal Sliding Window



Frame Construction

The frames have a depth of 3 1/4" and are constructed of 6063-T6 aluminum alloy. The nominal material wall thickness for the frame is .062", and the sill has a minimum wall thickness of .094". Three sill heights allow the designer to "customize" water performance to suit the needs of geographical wind load. Corners are of screw spline construction and sealed. See Illustration 1.

Sash Frame Construction

The sash consists of aluminum members with .062" nominal material wall thickness of 6063-T6 alloy. Sash verticals telescope into sash horizontals. Corners are of screw spline construction and sealed. Cam sash design and continuous interlock at the sash meeting rail offer superior weathering and structural performance. See Illustration 2.

Weather Stripping

The perimeter of the sash is weather-stripped with Q-Lon®. Two holes or slots through the window sill facilitate weepage.

Screens

Half screens are mounted inset within the window frame. Screen frames are extruded 6063-T6 aluminum alloy. 18 x 16 mesh screens are available in fiberglass and .011" diameter aluminum. 18 x 18 mesh screens are available in .009" diameter stainless steel.

Thermal Barrier

Head, jamb, and sash are thermally improved using the latest in two-part, high density, polyurethane. Sills are thermally isolated with two thermal struts, consisting of glass reinforced polyamide nylon, mechanically crimped in raceways extruded in the exterior and interior extrusions. See Illustration 3.

Hardware

Concealed plunger lock at sash meeting rail with a flush mounted actuating handle is standard. Optional sweep locks, access controlled sweep locks, pole ring sweep locks, and keepers are of cast white bronze with a US25D finish. The sash glides on steel ball bearing rollers over a raised sill track ensuring smooth operation and minimizing the effects of debris and dirt build-up on the sill. See the Hardware Chart for available hardware types.

Glazing

Windows are inside glazed with an extruded aluminum snap-in glazing bead. Glazings of 1/8" to 1" are accommodated. See the Glazing Chart for the exact size.

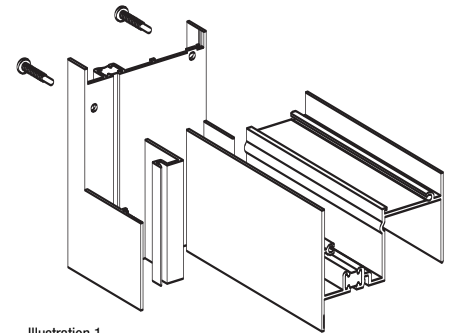


Illustration 1

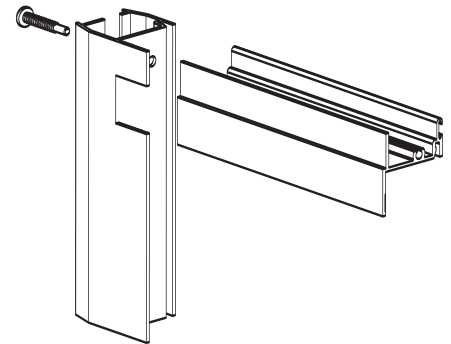


Illustration 2

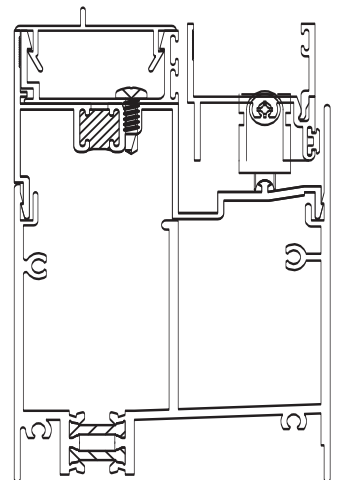
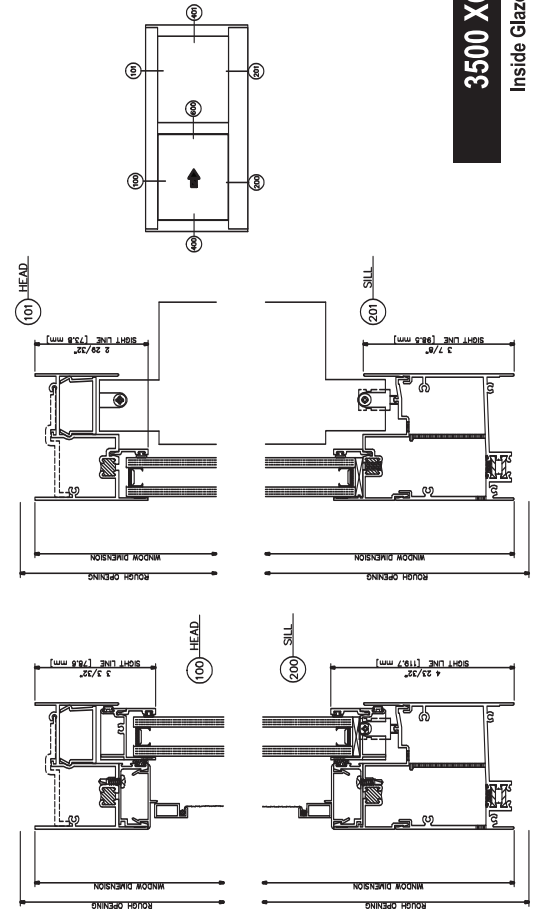
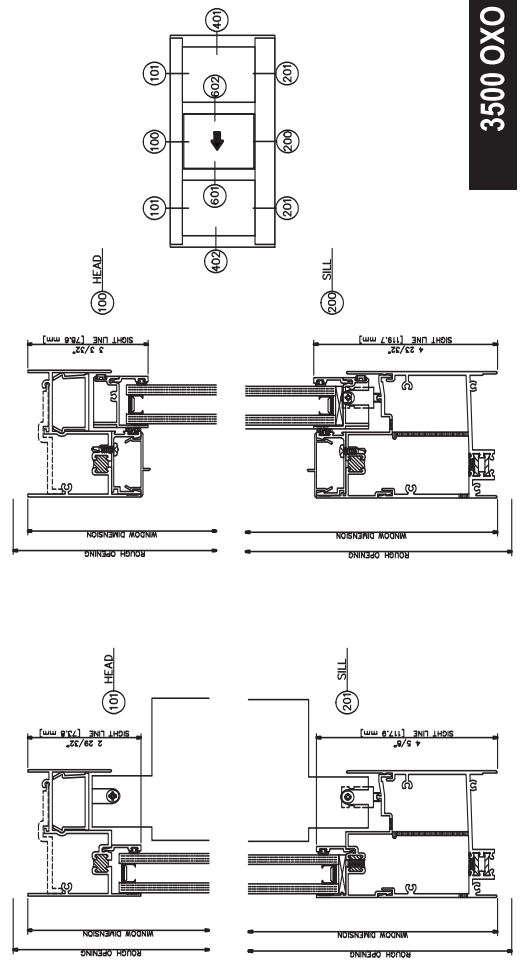
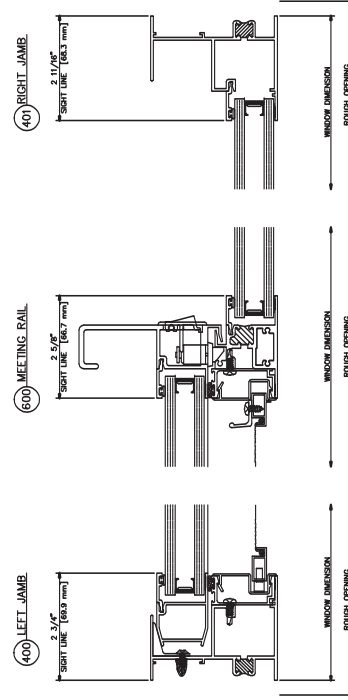
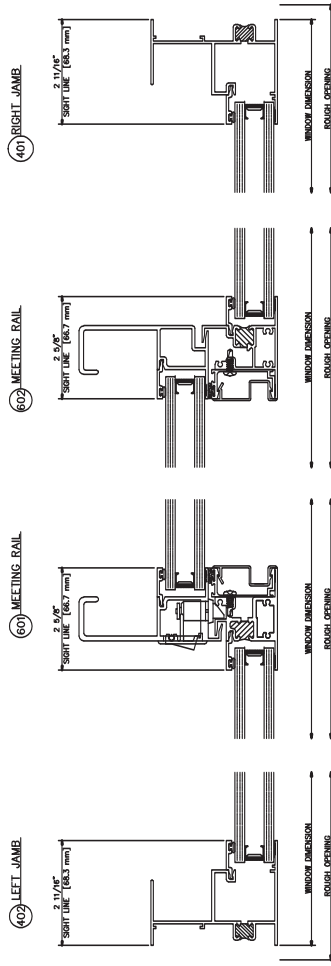


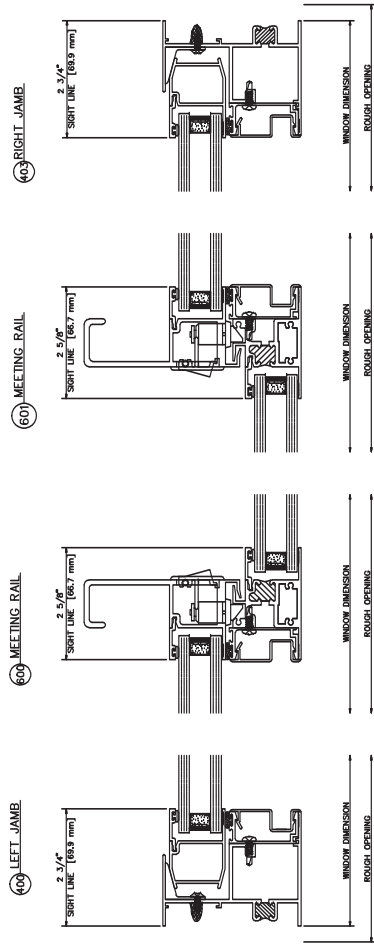
Illustration 3



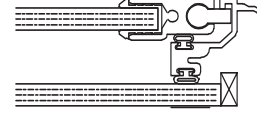
3500 XO
Inside Glazed

3500 XO
Inside Glazed

Inside Glazed



ER65 - 1/4" INTERIOR PANEL
1/4" MONOLITHIC



1/4" MONOLITHIC

