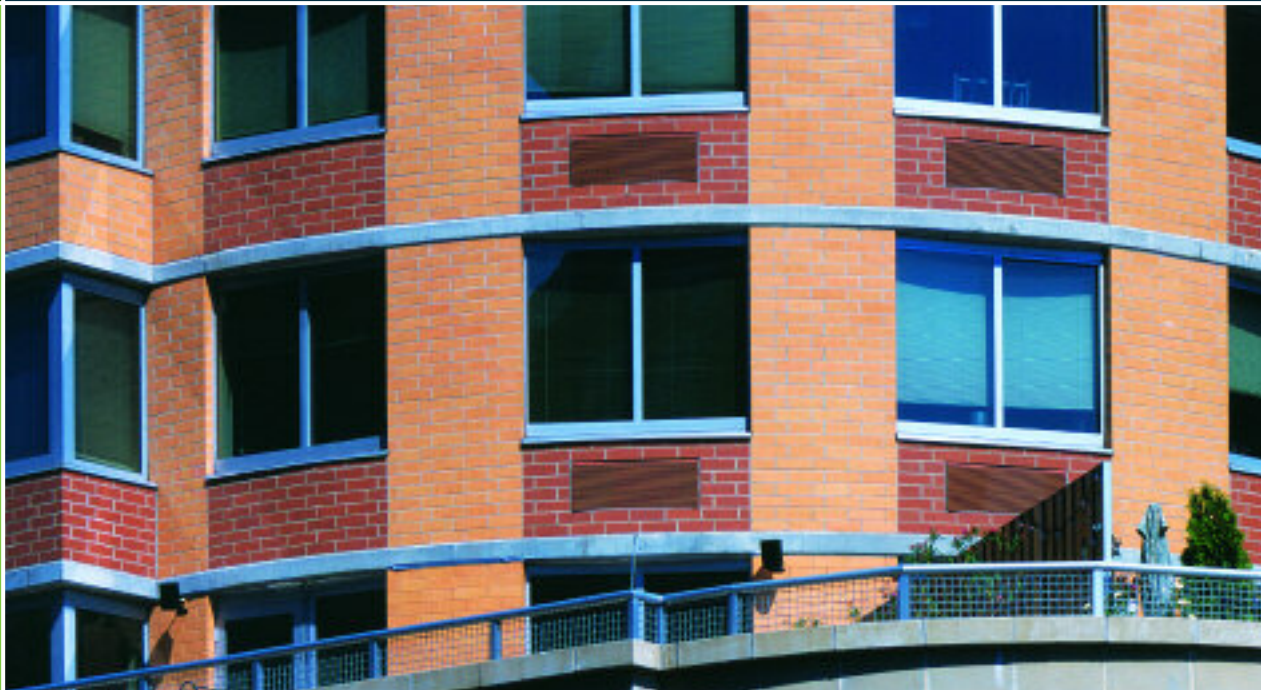




Manufacturer  
Of  
Architectural  
And  
Commercial  
Grade  
Windows,  
Curtain Walls,  
Entrances,  
And  
Storefronts

EFCO CORPORATION  
1000 COUNTY RD  
MONETT, MO 65708  
800.221.4169



## ***Series 880-I Thermal 3 1/2" Heavy Commercial Casement Split-Vent Window***

### ***Configurations*** Casement Split-Vent

Series 880-I retains an AAMA Heavy Commercial and Architectural Grade rating to meet the most demanding specifications. Designed for high-rise residential, educational, office or healthcare facilities, the 880-I window system is an attractive product for a wide range of applications. Multiple glazing options provide flexibility to meet specific design requirements. E-Strut™ thermal isolators provide outstanding thermal performance while allowing for different interior and exterior finishing options. Offered with a complete line of sub frames, mullions and architectural sills, the 880-I window provides the complete solution for your fenestration needs.

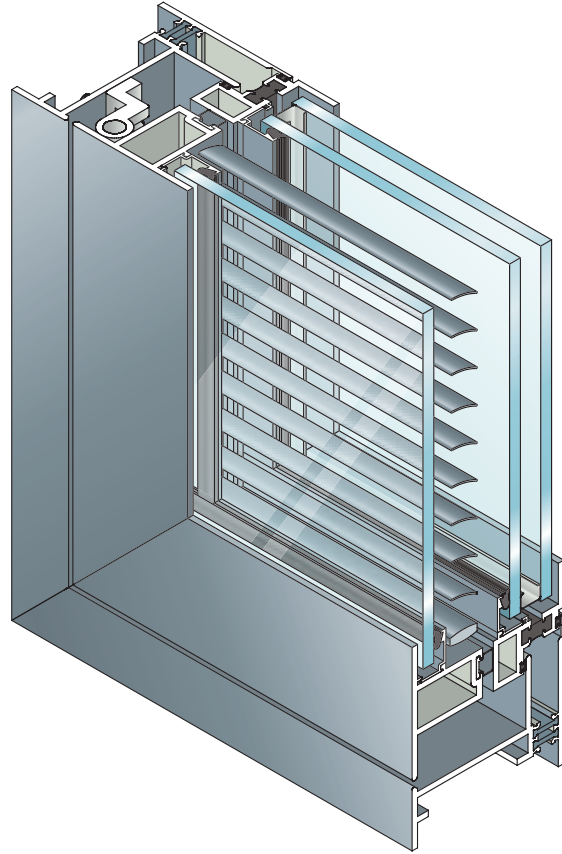
### ***Features***

### ***Benefits***

E-Strut™ thermal isolator	Improves U-Value performance Dual finish capability Completely eliminates dry shrinkage
Neoprene gasket between the exterior and interior vent	Isolates the air space between the lites of glass and reduces cleaning
Angle reinforced vent corners	Improves sash/vent rigidity
Accommodates glazing units from 1/4" to 1" depth	Expands design and energy savings with low maintenance
Triple or dual glazing with optional integral blinds	Improved energy savings with low maintenance
Pressure equalization	Superior water resistance
Screen frames of extruded aluminum alloy are available	Stronger more durable screens
Accessory line of subframes, mullions, and architectural sills	Allows custom designs with standard product
Anodized or painted finishes available	Unlimited options to answer economic and aesthetic concerns



## Series 880-I Thermal 3 1/2" Heavy Commercial Casement Split-Vent Window



### Performance Data

#### Casement Architectural Grade

AAMA Rating (A440-05)	C-AW120
Air Infiltration	<.10 cfm/sf @ 6.24 psf
Water	No Leakage @ 15.0 psf
Structural	± 180.0 psf
CRF-Frame (1503.1)	55°
CRF-Glass (1503.1)	61°
U-Value (1503.1)	.53°

A = Estimated values and/or designations  
B = Non-standard size or configuration  
C = Dual glazed  
D = 1" Insulated - 1/4" clear, 1/2" air, 1/4" clear  
E = 1" Insulated - 1/4" clear (Low Emissivity), 1/2" air, 1/4" clear  
F = 1" Insulated - 1/4" clear (Low Emissivity), 1/2" argon, 1/4" clear  
G = 1" Insulated - 1/4" clear, 1/2" air, 1/4" clear (Low Emissivity)

#### S-880I Hardware Chart

	Butt Hinges	4-Bar Arms	Friction Adjuster	Key Release Limit Arm	Rotor Operator*	Cam Handle	Pole Ring Cam Handle	Pole Ring Pull**	Access Controlled Lock	Lift Lock
Casement InswingWith Butt Hinges	S		0	0		S	0		0	0

Some size restrictions may apply depending on hardware selected.

\*-Casements requiring roto operators will be furnished with lift locks, providing vents meet minimum width requirements.

\*\*-Pole ring pull will be furnished on project-out vents when optional pole ring cam handle is selected.

0-Optional  
S-Standard  
blank - N/A

#### S-880I Glazing Chart

S-880I Glazing Chart		Polycarbonate			Glass or Panel															
		1/8"	3/16"	1/4"	1/8"	.156**	3/16"	.200**	1/4"	1/4***	1/2"	5/8"	3/4"	7/8"	1"	1-1/8"	1-1/4"	1-1/2"	1-3/4"	2"
Dual Glazing	Exterior Lite			I				I	I	I			I		I					
	Interior Lite			A				A	A	A										

\*-Obscure Glass Thickness  
\*\*-Laminated Glass Thickness

A-Available Glazing Option  
I-Internal Blinds Can Be Used With This Type of Dual Glazing  
blank - N/A

# Series 880-I Thermal 3 1/2" Heavy Commercial Casement Split-Vent Window



## Main Frame Construction

The frame is constructed from .125" nominal material wall thickness aluminum of 6063-T6 alloy with a depth of 3 1/2". Corners are mitered, angle-reinforced, welded, and back sealed with a small-joint seam sealer. See Illustration 1.

## Vent Frame Construction

The 3 1/2" deep split vent consists of tubular aluminum members with .125" nominal material wall thickness of 6063-T6 alloy. Vent corners are mitered, angle-reinforced, crimped, cold epoxy welded, and back sealed with a small-joint seam sealer. Exterior and interior vents are side hinged from the same concealed three-leaf hinge. Vents are flush with the frame when in the closed position. See Illustration 2.

## Weather Stripping

All vents are dual weather-stripped with a dual durometer Santoprene® gasket. The exterior gasket is intentionally omitted at the vent top rail for inswing vents. This allows the air to pressure equalize the void between the vent and frame. Each exterior vent utilizes the pressure equalization technique for superior water resistance performance. The interior vent has one neoprene gasket designed to isolate the interior air space between the lites of glass. Two holes or slots per vent through the window frame facilitate weepage.

## Screens

Screen frames are extruded 6063-T6 aluminum alloy frames. 18 x 16 mesh screens are available in fiber-glass and .011" diameter aluminum. 18 x 18 mesh screens are available in .009" diameter stainless steel.

## Thermal Barrier

The exterior sash is thermally improved using the latest in two-part, high density polyurethane. Frames are thermally isolated with two thermal struts consisting of glass reinforced polyamide nylon, mechanically crimped in raceways extruded in the exterior and interior extrusions. The interior vent is thermally isolated with a full perimeter gasket. See Illustration 3.

## Hardware

Locking cam handles, access controlled locks, and keepers are of cast white bronze in a US25D finish. Concealed, eight knuckle, three leaf butt hinges are fabricated from extruded aluminum of 6063-T6 alloy with nylon bushings and stainless steel pins. See Hardware Chart for available hardware types and more information.

## Glazing

Windows are inside glazed with an aluminum snap-in glazing bead with vinyl gasket. Dual glazing is standard with 1/4" glass in the exterior vent and 1/4" glass in the interior vent. Between the glass integral blinds are available.

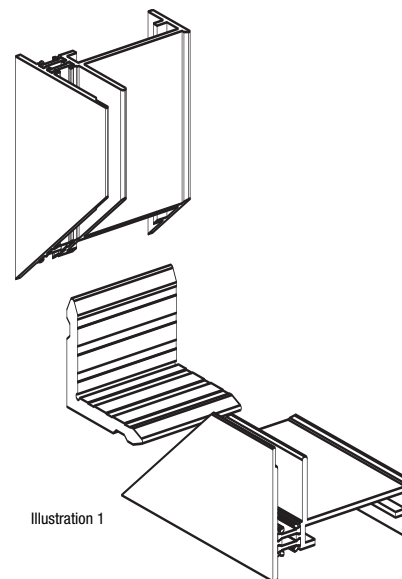


Illustration 1

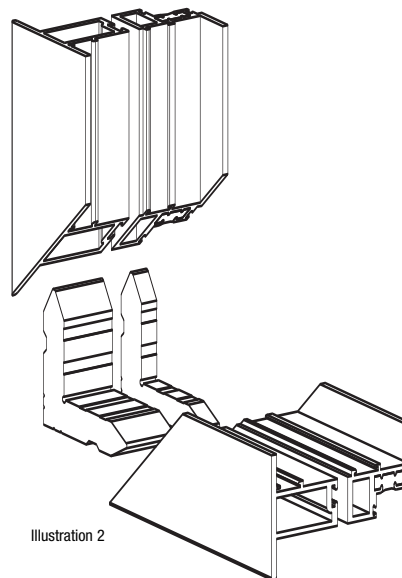


Illustration 2

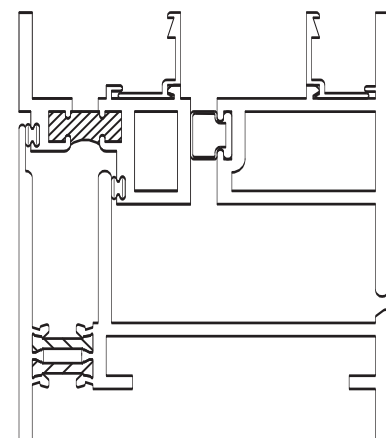
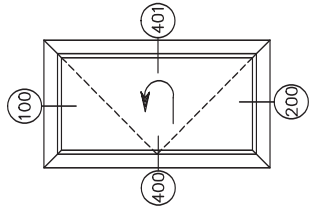
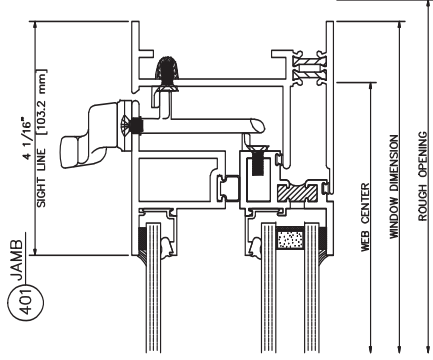
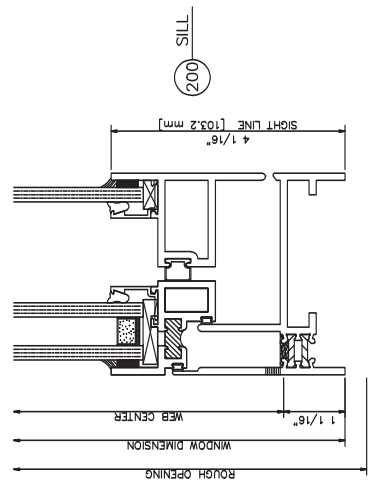
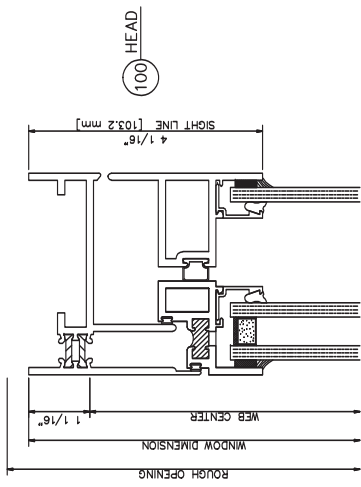
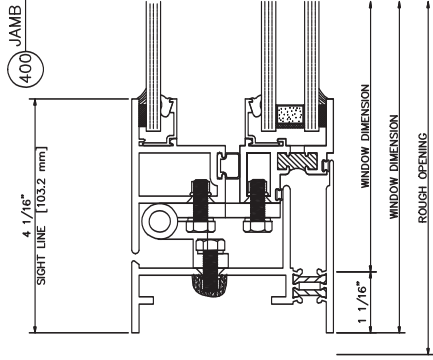
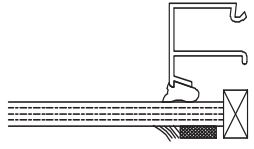


Illustration 3



1/4" GLAZE



3/4" INSULATED  
1/4"-1/4"

