

IMPACT GRADE



BLAST GRADE



## ***Series 660 Single Hung\* • Series 670 Double Hung • Series 6600 Fixed\*\**** ***3 7/8" Heavy Commercial Hung Thermal Window***

\*BLAST &amp; IMPACT GRADE \*\*IMPACT GRADE

### ***Configurations*** Single Hung • Double Hung • Fixed

This product family of hung windows retains an AAMA Heavy Commercial and Architectural Grade rating to meet the most demanding specifications and is a proven performer in projects ranging from historical replication to new construction. This hung window series is an attractive and economical product for a wide range of applications. Multiple glazing options offer flexibility to meet specific design requirements. A thermal barrier in the frame and sash improves thermal performance enhancing energy saving potential. Offered with a complete line of sub frames, mullions and architectural sills, this product family provides the complete solution for fenestration needs.

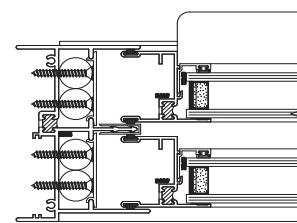
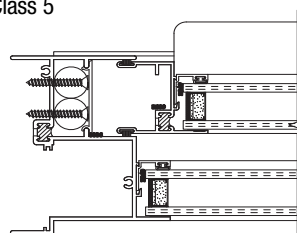
**Manufacturer  
Of  
Architectural  
And  
Commercial  
Grade  
Windows,  
Curtain Walls,  
Entrances,  
And  
Storefronts**

### ***Features***

### ***Benefits***

Thermal barrier in vent and frame	Improves U-Value performance Enhances energy saving potential
Weather-stripped sash and sill	Provides superior air and water performance
Continuous interlock meeting rails	Improves air infiltration resistance
Accommodates glazing units from 1/8" to 1 1/4" depth	Expands design and energy saving options
Inside or outside glazed sash	Flexibility in design requirements for glazing
Dual glazing with optional integral blinds	Improved energy savings and interior light or privacy control with low maintenance
Automatic top and bottom sash locks available	Increased convenience
Screen frames of extruded aluminum alloy are available	Stronger more durable screens
Trim-All™ panning available	Allows matching of existing sight lines in restoration projects
Accessory line of subframes, mullions, and architectural sills	Allows custom designs with standard product
Anodized or painted finishes available	Unlimited options to answer economic and aesthetic concerns

EFCO CORPORATION  
1000 COUNTY RD  
MONETT, MO 65708  
800.221.4169

[illegible]

# Series 660 Single Hung\* • Series 670 Double Hung • Series 6600 Fixed\*\* 3 7/8" Heavy Commercial Hung Thermal Window



\*BLAST & IMPACT GRADE \*\*IMPACT GRADE

## Frame Construction

The frames have a depth of 3 7/8" and are constructed of 6063-T6 aluminum alloy. The nominal material wall thickness for the frame is .080", and the sill has a minimum wall thickness of .094". Corners are of screw spline construction and sealed. See Illustration 1.

## Sash Frame Construction

The sash consists of aluminum members with .080" nominal material wall thickness of 6063-T6 alloy. Corners are of screw spline construction and sealed. Dual weather-stripped, continuous interlock at the sash meeting rail(s) offers superior weathering and structural performance. See Illustration 2.

## Weather Stripping

All sash are weather-stripped with FIN-SEAL® or equal. Two holes or slots per sash through the window frame facilitate weepage.

## Screens

Screen frames are extruded 6063-T6 aluminum alloy. Screens are easily removed by retracting two plungers located on the interior face of the screen frame near the sill at each jamb. Full or half screens are available. 18 x 16 mesh screens are available in fiberglass and .011" diameter aluminum. 18 x 18 mesh screens are available in .009" diameter stainless steel.

## Thermal Barrier

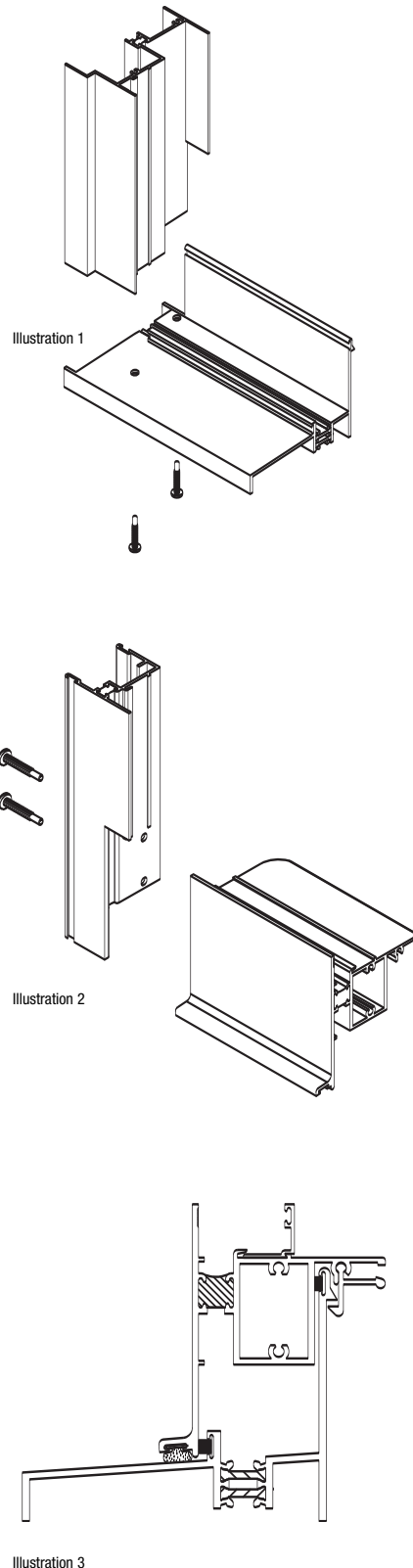
Sills are thermally isolated with two thermal struts, consisting of glass reinforced polyamide nylon, mechanically crimped in raceways extruded in the exterior and interior extrusions. All other frames and sash are thermally broken using the latest technology in two-part high density polyurethane. See Illustration 3.

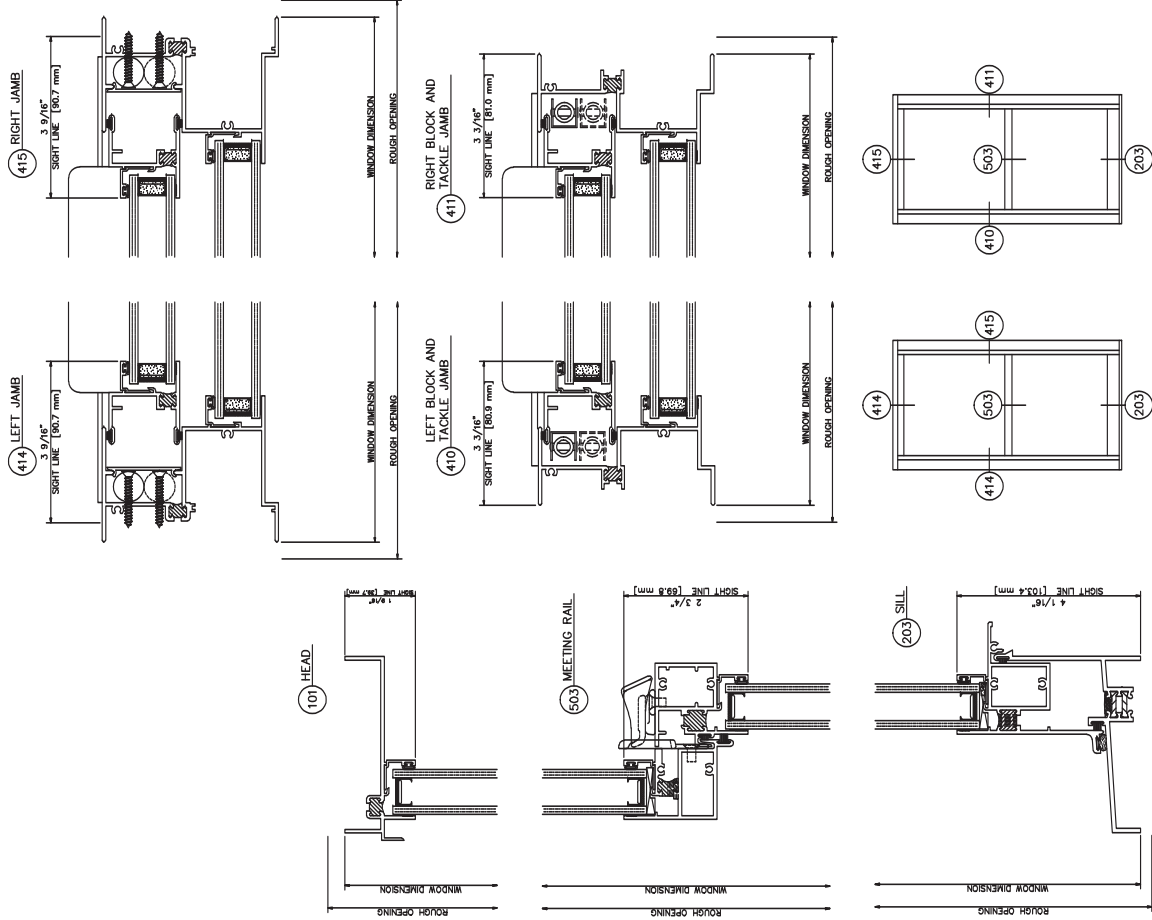
## Hardware

Sweep locks, access controlled sweep locks, pole ring sweep locks, and keepers are of cast white bronze with a US25D finish. Automatic head and sill locks are fabricated of aluminum alloy and finished to match the window. Two types of balance systems are available. A spring loaded block and tackle balance rated Class 1 with a .70 MAF\* ratio is standard. A high performance torsion spring and extension spring balance rated Class 5 with a .30 MAF\* ratio is optional. EFCO reserves the right to substitute a higher performance balance as project conditions dictate, i.e., large, heavy sash requiring minimum operating force. See the Hardware Chart for available hardware types.

## Glazing

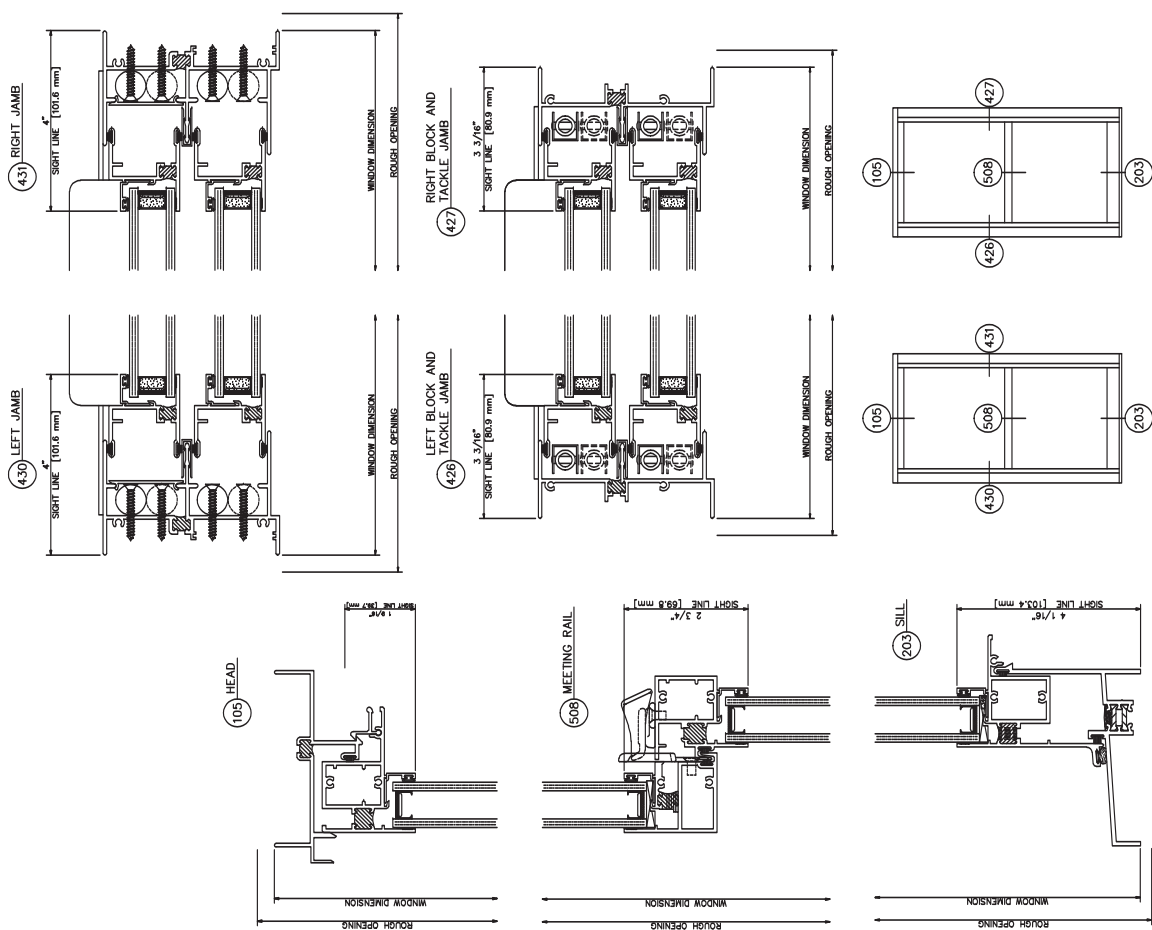
Sash is inside or outside glazed with an extruded aluminum snap-in glazing bead. Glazing of 1/8" to 1 1/4" can be accommodated. Dual glazing is also available in 1/8", 3/16", and 1/4" glass. Between the glass 5/8" aluminum blinds are available with dual glazed windows. Series 6600 fixed frame windows accommodate glass or panels from 1/8" to 3 1/2" thick. See the Glazing Chart for the exact size.





**660 Single Hung**

Inside Glazing with Block and Tackle Balances

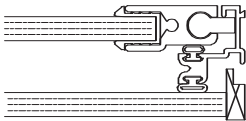
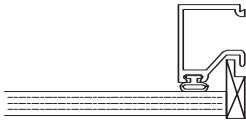


**670 Double Hung**

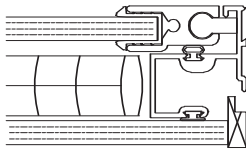
Inside Glazing with Block and Tackle Balances

660, 670 Glazing

ER65 – 1/4"  
INTERIOR PANEL  
1/4" MONOLITHIC



ER65 – 1/4"  
INTERIOR PANEL  
1/4" MONOLITHIC



3/4" INSULATED  
1/4" – 1/4"  
WITH GRID

