

■ **Molded Plastics**

Polypropylene, Nylon, ABS



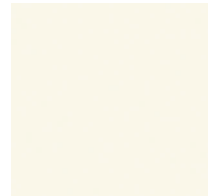
Furnishing Knowledge®



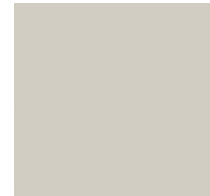
**LEMON CREAM**  
LC



**SUNBURST**  
SU



**WET SAND**  
WS



**LIGHT TONE**  
LG



**CAYENNE**  
CY



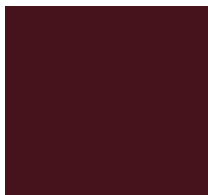
**TANGELO**  
TO



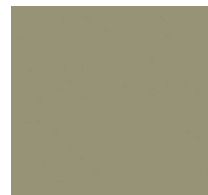
**SAND**  
SA



**CAFÉ AU LAIT**  
CF



**BORDEAUX**  
BD



**MOSS**  
MZ



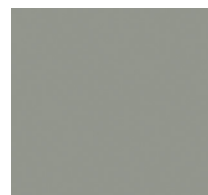
**MARINE TEAL**  
MR



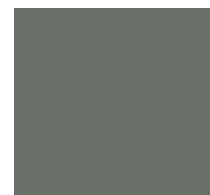
**ABRACADABRA**  
AC



**GRAPE**  
GX



**WARM GREY**  
WG



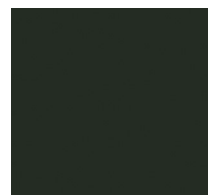
**BLUE GREY**  
GR



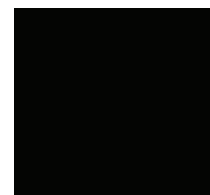
**SPLASH**  
SH



**NORDIC**  
ND



**FLANNEL**  
FN



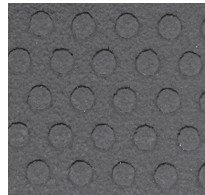
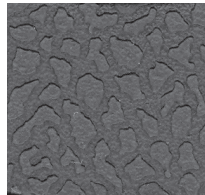
**BLACK**  
BL

# Actual Samples and Replacement Cards

Available through the on-line literature ordering system at [ki.com/literature](http://ki.com/literature) or from your KI Sales Representative.

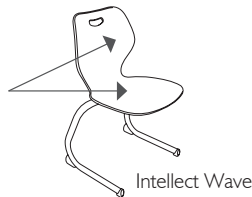
- Not all colors are available on all KI products.
- Please refer to KI Color Addendum for details.
- There may be slight variations in color, texture and finish between these samples and the actual product.

## TEXTURES



Depending on the product, molded plastic textures will vary as illustrated above. Contact KI for additional information.

Seat Shells (seat and back) are made of molded plastic materials such as polypropylene, nylon or ABS.



KI and Furnishing Knowledge are trademarks of Krueger International, Inc.

© 2008 KI Litho in USA KI-32369R2/HC/EWB/I007

Effective November 3, 2008

Printed using only vegetable-based inks, including metallics. Please recycle.

