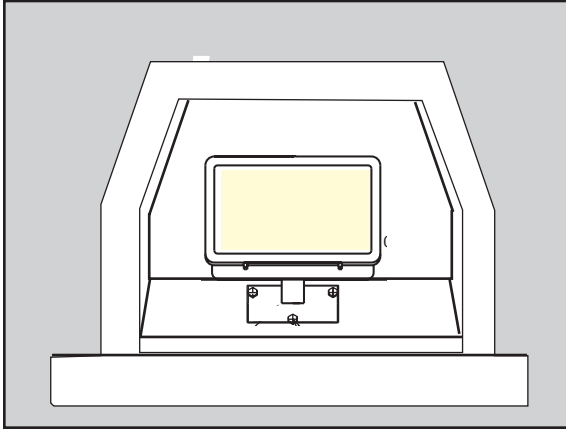


TF 8001 Sign Light



Options

(Note: Options may change without notice. Call to confirm current options.)

Sandblasted:

Sand - Gray - Buff

Smooth/ Stained Concrete:

Sand - Gray - Brown - Light Charcoal

Red - Yellow - Orange

Custom Options Available

Size:	28" Long x 18" Wide x 20" High
Weight:	280 lbs.
Material:	Reinforced Concrete.
Reinforcing:	1/4" & 3/8" Dia. steel rebar.
Features:	Provides grade level Lighting that matches the sign finish.
Hardware:	(3) - 5/16" Dia. threaded inserts. (3) - 5/16" Dia. x 1' Stainless Steel Bolts. (1) - Stainless Steel Cover Plate w/ Pre-drilled Holes.
Lighting:	100 Watt 50 Watt Metal Halide 70 Watt Metal Halide 100 Watt Metal Halide
Anchoring:	Installed on concrete footing with the top of light base 3" below grade.
Maintenance:	Rinse periodically with water & mild detergent. Re-seal annually.
Packaging:	Banded to pallet.

GENERAL SIGN SPECIFICATIONS

TF8001 SIGN LIGHT

1.1 SUMMARY

A. Section includes: Precast Concrete Sign indicated on drawings or specified herein.

1.2 REFERENCES

- A. American Society for Testing & Materials:
 1. ASTM C33 2. ASTM C150 3. ASTM C31

1.5 SUBMITTALS

- A. Submit product data, shop drawings and samples.
 1. Product Data: Manufacturer's specifications and technical data edited specifically for proposed system, including the following specific information:
 a. Detailed specification of construction fabrication
 b. Manufacturer's installation instructions
 c. Maintenance literature
 d. Product warranty
 2. Shop Drawings: Indicate pertinent dimensions, general construction, component connections, anchoring methods, hardware and installation procedures.
 3. Samples as requested by Architect.

1.6 QUALITY ASSURANCE

A. Qualifications of Manufacturer: Manufacturer to be prequalified by specifier prior to bidding. Failure to comply will result in disqualification of bid. Manufacturer to have at least five years experience in the manufacture of precast concrete signs field proven for at least five years.

1.10 WARRANTY

Manufacturer shall submit a written warranty for precast products for the period of two years upon acceptance of products.

2.1 MANUFACTURERS

A. Acceptable manufacturer for Precast Concrete Sign to be known as:
 Wausau Tile, Inc.
 Terra-Form Division
 PO Box 1520
 Wausau, WI 54402-1520. (800) 388-8728.

B. Clarification Note: Drawings and installation specification are based on manufacturer's proprietary literature from Wausau Tile, Inc. Other manufacturers

shall comply with minimum levels of material and detailing indicated on drawings or specified herein.

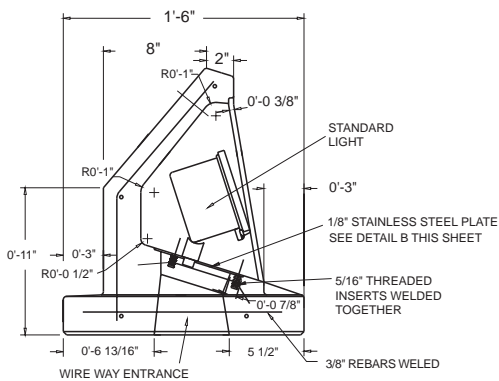
C. All Precast products for this project shall be of one manufacturer.

2.2 MATERIALS

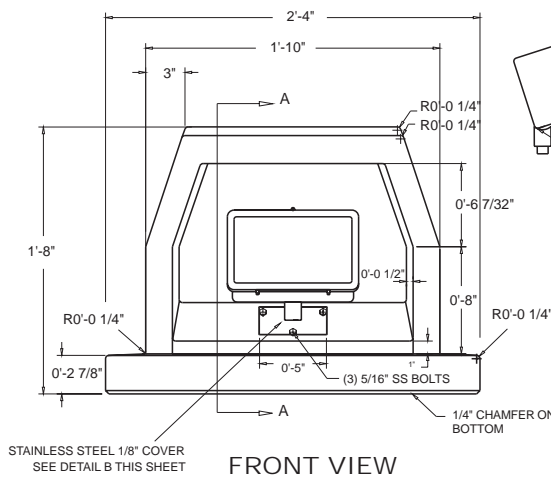
A. Portland Cement: ASTM C150 specifications for Portland Cement.

B. Aggregates: All aggregates to meet ASTM C33 specifications, to be cleaned of foreign matter and properly graded to size.

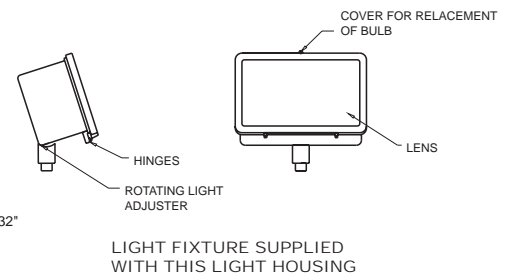
C. Coloring: Pigments used shall be inorganic, resistant to alkalinity and used as per manufacturers recommendations.



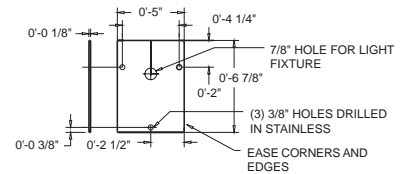
SECTION VIEW A-A



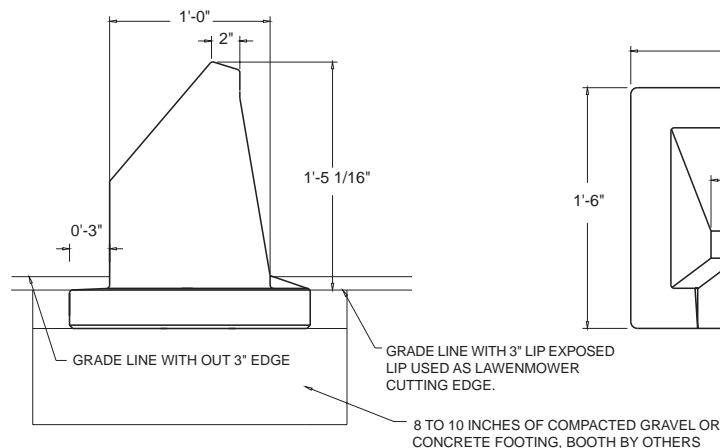
FRONT VIEW



LIGHT FIXTURE SUPPLIED WITH THIS LIGHT HOUSING

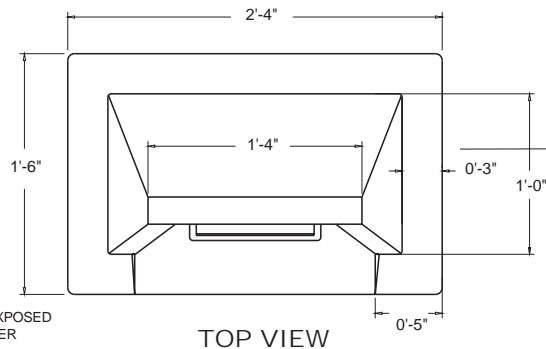


DETAIL B STAINLESS COVER PLATE



SIDE VIEW

NOTE: TYPE OF LIGHTS AVAILABLE
 100 WATT MV, 120 VOLT NO. NS6310-1
 50 WATT MH, 120/277 VOLT NO. NS6405-D
 70 WATT MH, 120/277 VOLT NO. NS6407-D
 100 WATT MH, 120/227 VOLT NO. NS6410-D



TOP VIEW