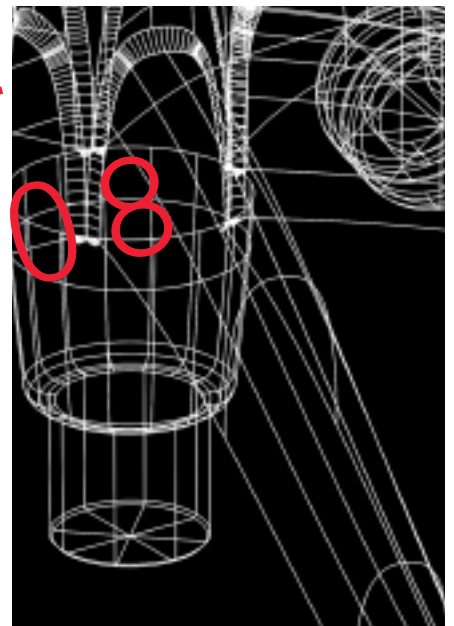


# *Seating*

PARTS & REPAIR  
MANUAL



Revised  
11/04/2008

## Cushions, Arm Pads and Retrofit Kits

---

Use the Configurator Seating Replacement & Retrofit Parts section to enter parts orders for all seating cushions and covered arm pads.

For Freedom in Configurator F-REPLACEMENT

For Liberty in Configurator L-REPLACEMENT

\*\*\*\***Exception**\*\*\* Duron or Xanium order by part number as per the Price Guide.

All Arm Pads are shipped as pairs.

## Handles

---

\*\*\*\***For Graphite change the x to a 1**\*\*\*\*

\*\*\*\***For Titanium change the x to a 2**\*\*\*\*

35**263**1000x should be used for all headrest chair replacement handle orders.

35**028**1000x = Old style/Unicor handle for older task chairs **below** serial number 160,000.

35**264**1000x = Bumper handle for all current task chairs **above** serial number 160,000.

If you are ordering replacement task handles please have the customer submit the serial number, if it is below 160000, order the old style handle, 35**028**1000x. The reason for this is at one point there was a small locating tab that was cast into the post that the was used on the upper back casting (30**075**1110x) and the new handle, 35**264**1000x will not fit over the tab.

## Arms/Ratchet Locks

---

The ratchet lock on the lower arm can be broken. An engineering change was made to make this part stronger. On older chairs this piece was held in with a roll pin, a screw is used on current production. As a result the entire lower arm must be replaced. If an order comes in requesting ratchet locks please send a replacement lower arm assembly not just the ratchet lock. 30**271**1110x Lower Arm Assembly

## Task Chair Upper Back/Handle

---

If the one or both upper back supports break near where the handle attaches the upper back casting(s) must be replaced. You may need to send one or two of 30**075**1110x Upper Back Support

## Seat Pans and Headrests

---

When seat pans are requested make sure to send the complete Seat Shell Assembly, 35**269**1001x, Seat Pan Assembly. Due to material changes that have improved the strength the Heavy Duty pan has been discontinued.

If a headrest assembly is damaged replace the headrest assembly with 35**256**1000x Headrest Assembly.

*When parts orders come in that are requesting many items that may go into a Headrest Assembly, Seat Pan Assembly or Lower Arm Assembly please examine what is being requested and change the order to the correct assembly. Due to the complexity of these parts/assemblies they are no longer available as individual components. If you are unsure please contact Technical Services.*

\*\*\*\* *Please note that most Liberty, Side Chair and Cinto part numbers end in BL, SL or NL. When entered in Oracle all will be followed with two additional digits indicating the Revision Level. Please use the highest Revision Level available.* \*\*\*\*

\*\*\*\* *Due to revisions to parts, part numbers may change slightly or completely. If a number is not working please contact Engineering for the correct part number.* \*\*\*\*

# *Seating*

PARTS & REPAIR  
MANUAL



# OVERALL ASSEMBLY



*freedom*<sup>™</sup>



# Table of Contents

---

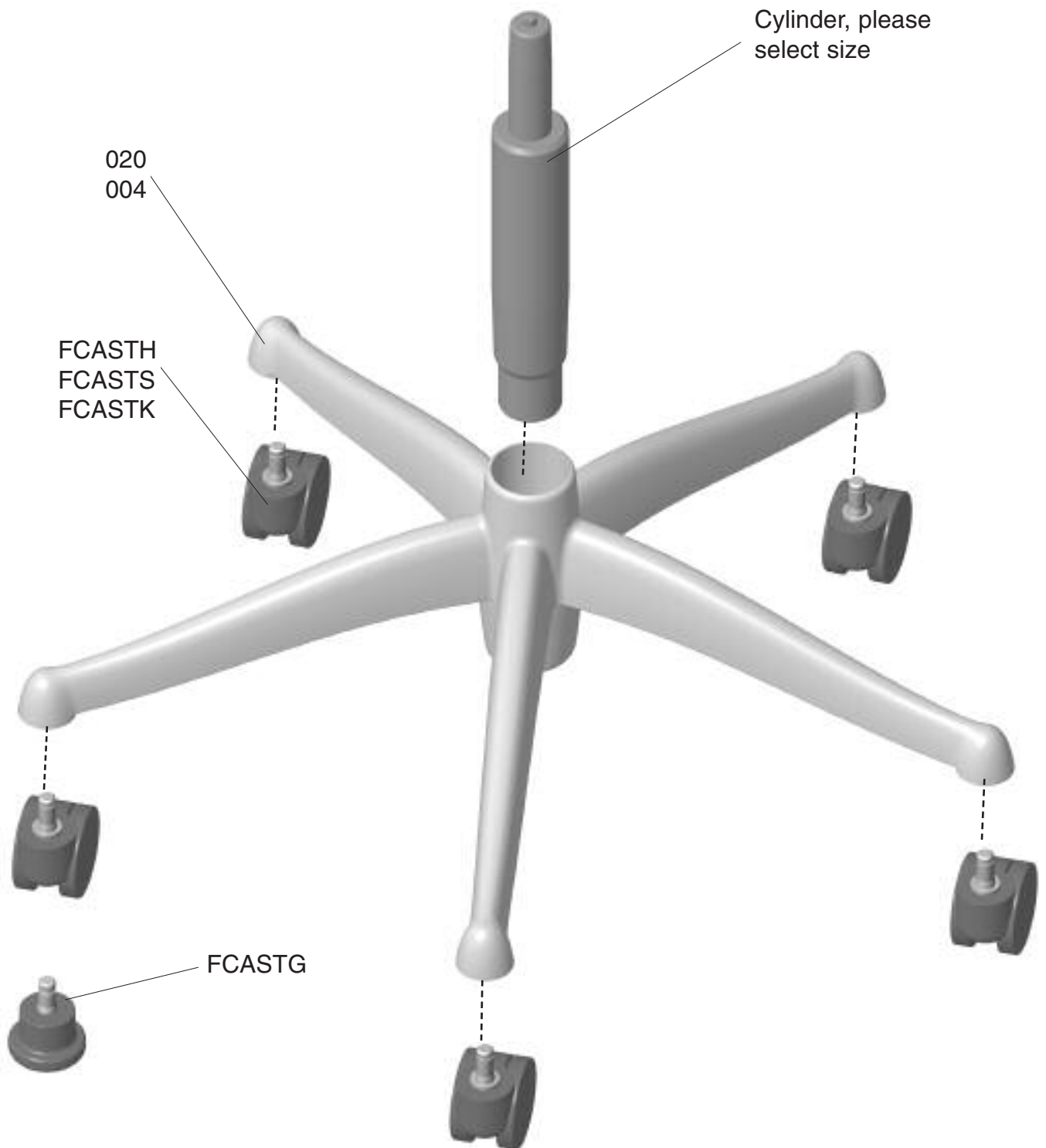
## PARTS

2	OVERALL ASSEMBLY
4	BASE ASSEMBLY
6	BASIC MECHANISM ASSEMBLY
8	LOWER BACK SUPPORT ASSEMBLY
10	ARM ASSEMBLY
12	BACK SLIDER ASSEMBLY
14	BACK SUPPORT FRAME ASSEMBLY, HEADREST
16	BASE, STANDARD MECHANISM, BACK FRAME ASSEMBLY
18	SEAT, CHANNELS ASSEMBLY
20	TASK CHAIR FRAME ASSEMBLY
22	TASK CHAIR FRAME ASSEMBLY, ARMLESS
24	HEADREST CHAIR FRAME ASSEMBLY
26	BACKREST SUPPORT ASSEMBLY
28	HEADREST SUPPORT ASSEMBLY
30	ADVANCED ARM ASSEMBLY
32	HEADREST PUSH ROD ASSEMBLY
34	SADDLE SEAT ASSEMBLY
84	TOOL BOX
86	PARTS ORDER FORM
87-88	TERMS & CONDITIONS

## REPAIR

38	BACK SLIDER WITH GUARD ASSEMBLY
40	SEAT CHANNEL WITH GUARD ASSEMBLY
42	ARM SUPPORT AND ARM PAD REPLACEMENT
44	PUSHROD ASSEMBLY
46	UPHOLSTERY ASSEMBLIES
48	CLEANING INSTRUCTIONS
49	TEXTILE CODES

## BASE ASSEMBLY



*freedom*<sup>TM</sup>

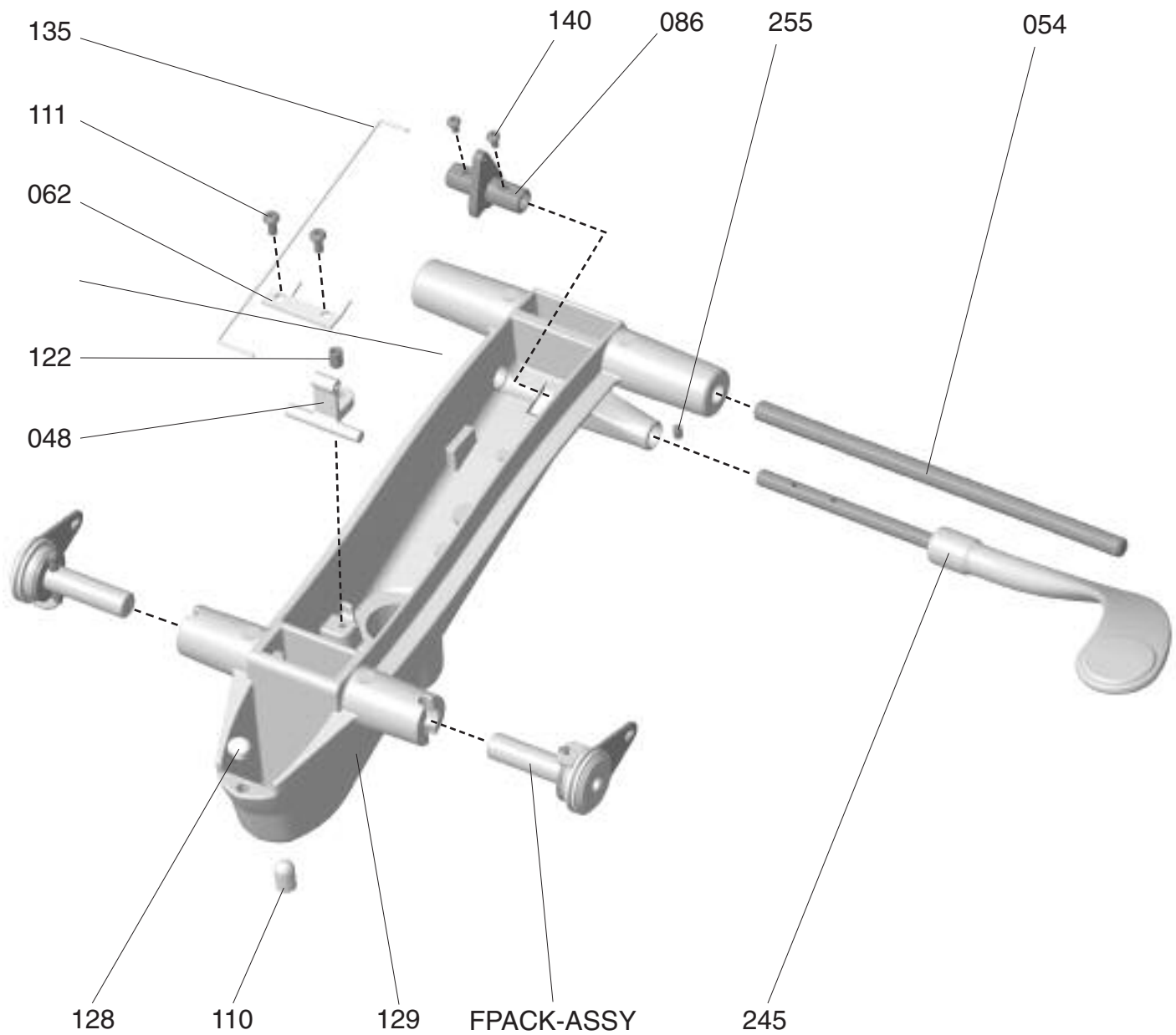


## PARTS

Number	Description	Quantity Per Assembly	Unit Price <sup>†</sup>	Comments
3000411101	Small Base, Graphite	1		standard height saddle seat only
3000411102	Small Base, Titanium	1		standard height saddle seat only
3000411103	Small Base, Polished Aluminum	1	\$130.00	standard height saddle seat only
3002011101	Standard Base, Graphite	1	\$75.00	
3002011102	Standard Base, Titanium	1	\$75.00	
3002011103	Standard Base, Polished Aluminum	1	\$130.00	
<b>FCASTS</b>	Twin Wheel Caster, Soft, set of 5	1		
<b>FCASTH</b>	Twin Wheel Caster, Hard, set of 5	1		
<b>FCASTK</b>	Twin Wheel Caster, Locking, set of 5	1		
<b>FCASTG</b>	Polyimide Glide, Black, set of 5	1		
8522410000	18" Footring, Chrome	1	\$88.28	
8522510000	21" Footring, Chrome	1	\$115.00	
8521110000	Cylinder, Low, 3.75 Stroke	1	\$40.00	optional, chair only
8521110001	Cylinder, Low Chrome, 3.75 Stroke	1		optional, chair only
8506810000	Cylinder, Standard, 5 Stroke	1	\$25.00	
8506810004	Cylinder, Standard Chrome, 5 Stroke	1		
8522210000	Cylinder, 5" Optional, 5 Stroke	1	\$35.00	
8522210001	Cylinder, 5" Optional Chrome, 5 Stroke	1		
5000050315BL	Cylinder, Height Return, 5 Stroke	1		
8521010000	Cylinder, High, 8 Stroke	1	\$37.00	
8521010001	Cylinder, High Chrome, 8 Stroke	1	\$37.00	
8522310000	Cylinder, Extra High, 10 Stroke	1	\$40.00	

## NOTES:

## BASIC MECHANISM ASSEMBLY



*freedom*<sup>™</sup>





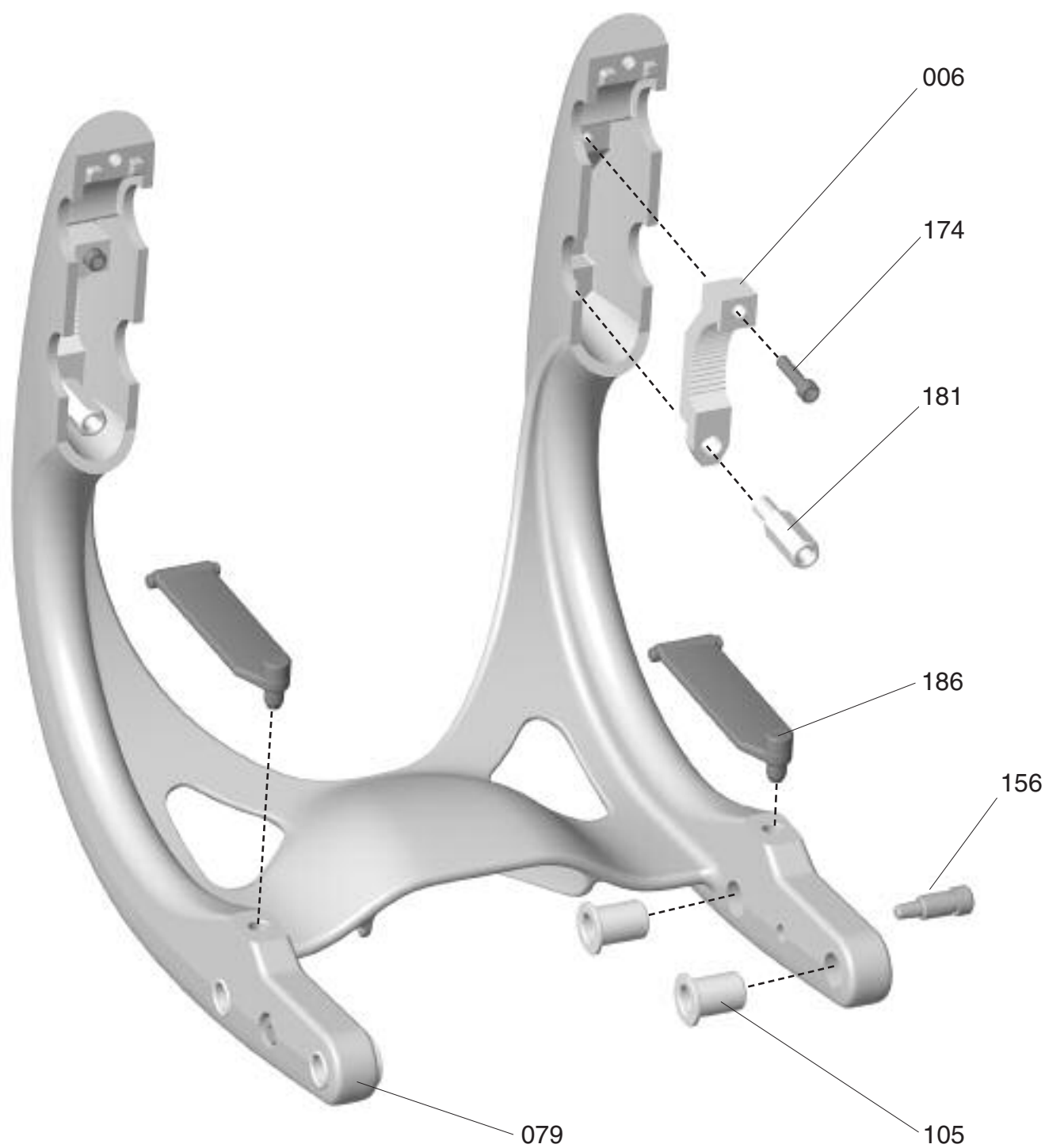
## PARTS

Number	Description	Quantity Per Assembly	Unit Price <sup>†</sup>	Comments
30 <b>245</b> 11101	Actuator Handle Assembly, Graphite	1	\$15.00	
30 <b>245</b> 11102	Actuator Handle Assembly, Titanium	1	\$15.00	
33 <b>048</b> 11000	Actuator, Basic Cylinder	1	\$1.50	
20 <b>054</b> 10000	Axle Main	1	\$1.50	
50 <b>062</b> 10000	Retainer, Cylinder Actuator	1	\$0.50	
35 <b>086</b> 10000	Single Action Lever	1	\$1.35	
20 <b>110</b> 10000	Spring Pivot	1	\$1.50	
04 <b>111</b> 10000	Screw, Socket, BTN HD 8-32 x 3/8	2	\$0.20	
04 <b>255</b> 10000	Set Screw, Self-Locking 10-32 x 3/16	1	\$0.15	
04 <b>122</b> 10000	Set Screw, Self-Locking 1/4-20 x 3/8	1	\$1.75	
35 <b>128</b> 10000	Bumper	1	\$0.20	
30 <b>129</b> 11101	Basic Housing, Graphite	1	\$55.00	
30 <b>129</b> 11102	Basic Housing, Titanium	1	\$55.00	
50 <b>135</b> 10000	Basic Pull Wire	1	\$0.40	
04 <b>140</b> 10000	Screw, Socket, BTN HD 6-32 x 1/4	2	\$0.30	
<b>FPAK-ASSY</b>	Friction Pack Assembly	2	\$30.00	

<sup>†</sup> Note: All part numbers and prices are for single units only.

## NOTES:

# LOWER BACK SUPPORT ASSEMBLY



*freedom*<sup>™</sup>



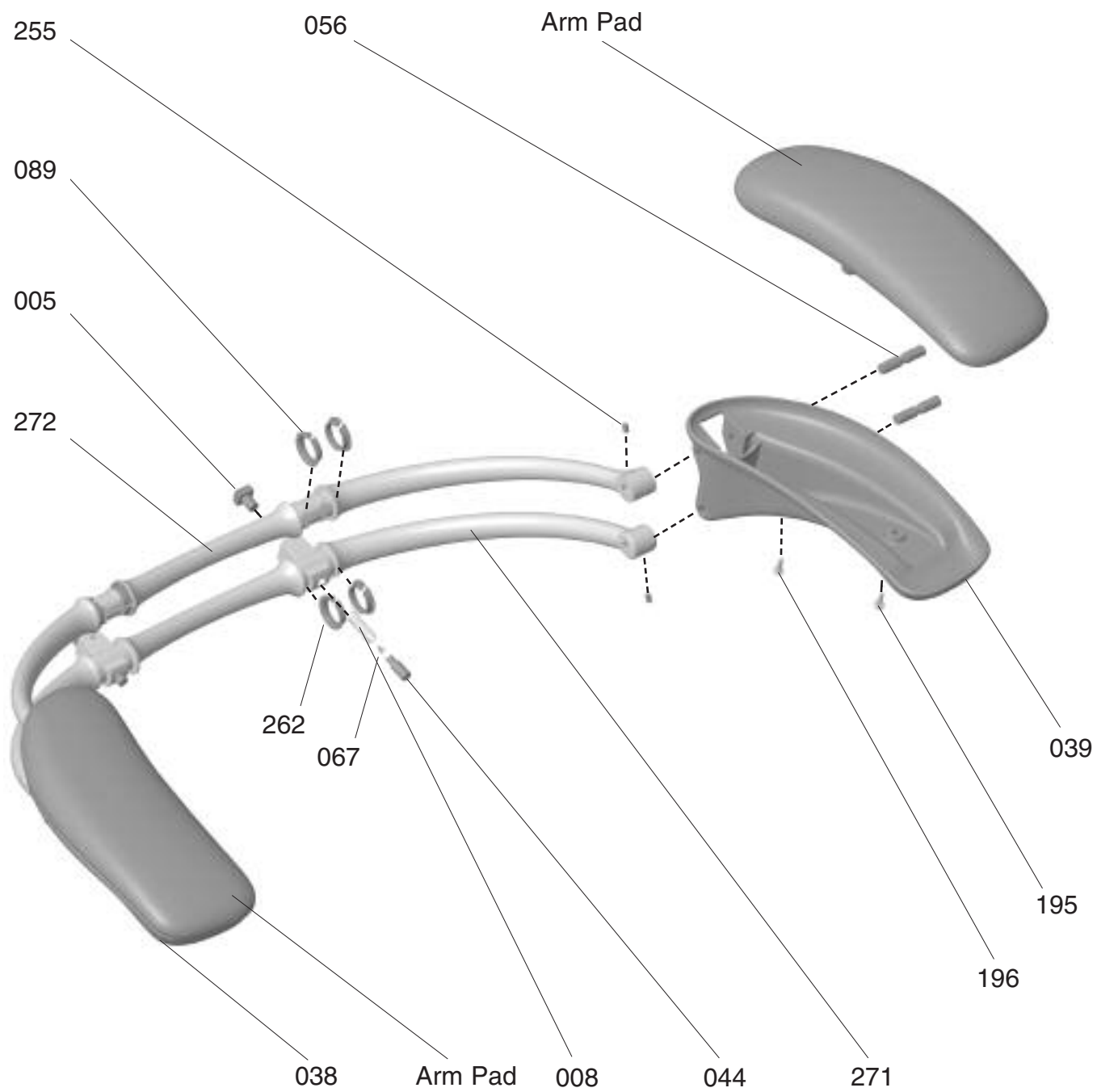
## PARTS

Number	Description	Quantity Per Assembly	Unit Price <sup>†</sup>	Comments
38 <b>006</b> 10000	Adjustment Ratchet	2	\$4.75	Replaces 3518210000
30 <b>079</b> 11101	Lower Back Support, Graphite	1	\$133.29	
30 <b>079</b> 11102	Lower Back Support, Titanium	1	\$133.29	
85 <b>105</b> 10000	Bronze Flange Bearings	4	\$0.55	
04 <b>174</b> 10000	Screw, Socket HD Cap, 8-32 x 3/4	2	\$0.25	
20 <b>181</b> 10000	Ratchet Anchor	2	\$3.25	
35 <b>186</b> 10000	Guard, Tilt Stop	2	\$1.85	
20 <b>156</b> 10000	Friction Screw	2	\$3.00	

<sup>†</sup> Note: All part numbers and prices are for single units only.

## NOTES:

ARM ASSEMBLY





## PARTS

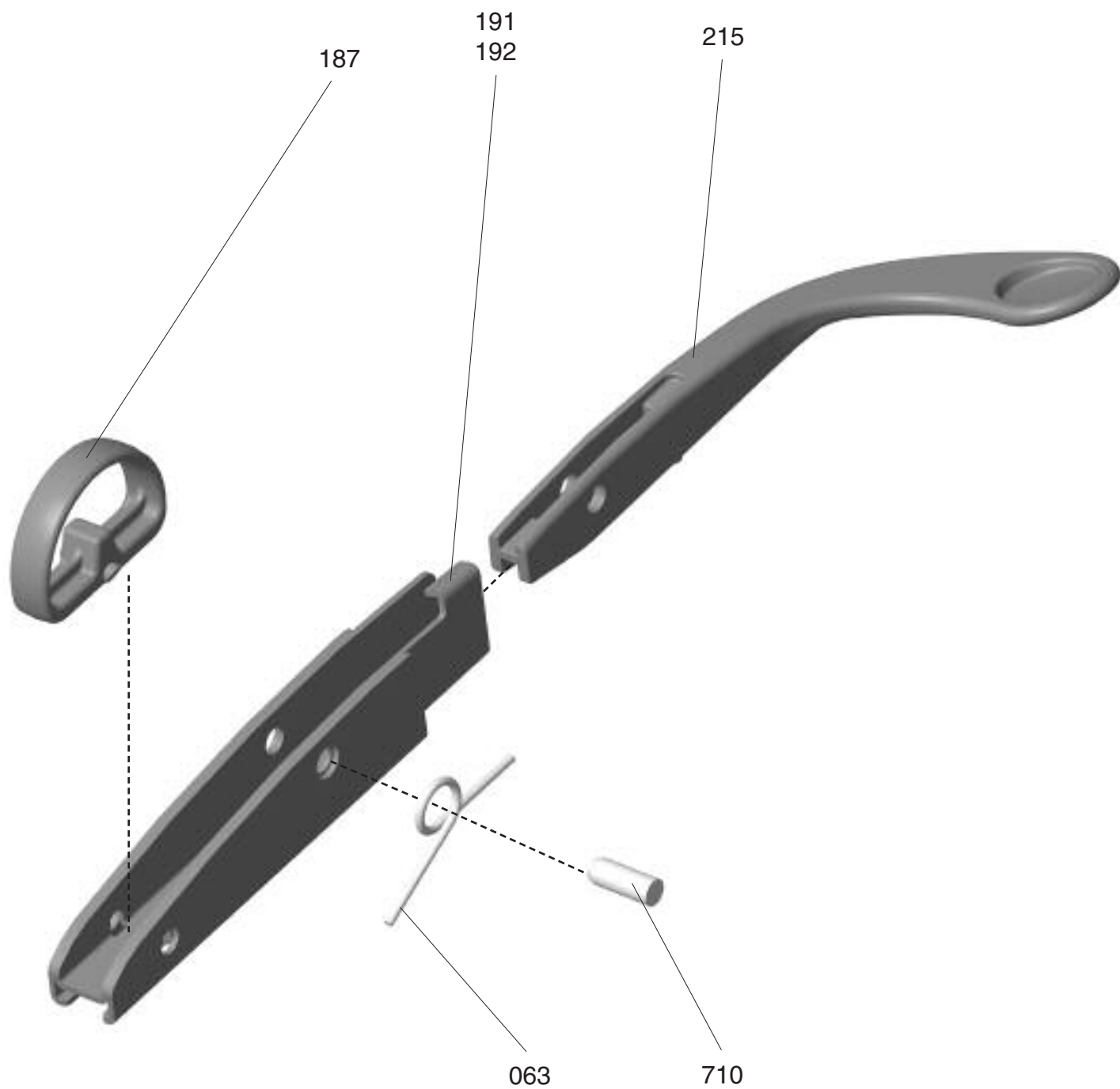
Number	Description	Quantity Per Assembly	Unit Price <sup>†</sup>	Comments
3027211101	Upper Arm Casting Sub Assy, Graphite		\$68.54	<i>Complete assembly with all screws, washers, and bearings. Order as complete unit</i>
3027211102	Upper Arm Casting Sub Assy, Titanium		\$68.54	
3027111101	Lower Arm Casting Sub Assy, Graphite		\$74.52	
3027111102	Lower Arm Casting Sub Assy, Titanium		\$74.52	
3800510000	Ratchet Lock	2	\$2.50	
5000810000	Spring, Plunger	2	\$0.05	
3503810001	Arm Support Right, Graphite	1	\$21.62	
3503810002	Arm Support Right, Titanium	1	\$21.62	
3503910001	Arm Support Left, Graphite	1	\$21.62	
3503910002	Arm Support Left, Titanium	1	\$21.62	
3504410000	Plunger	2	\$0.25	
2005610000	Pin, Arm Support	4	\$0.40	
3508910000	Split Flange Bearing, Upper Arm	4	\$0.35	
0406710000	Screw, Socket Cap, 8-32 x 3/8	2		
<b>FA</b>	Duron Arm Pads	1	\$45.00	
<b>FAM 1 2 2 2 *</b>	Duron Arm Pads w/ Matching Textile	1		<i>See Seating Price Guide</i>
<b>FX</b>	Gel Arm Pads, Xanium Cover	1	\$75.00	
<b>FXM 1 2 2 2 *</b>	Gel Arm Pads w/ Matching Textile	1		<i>See Seating Price Guide</i>
0419510000	Screw, Pan HD, Hi-Lo, TORX, 10 x 1/2	2	\$0.30	
0419610000	Screw, Pan HD, Hi-Lo, TORX, 10 x 1	2	\$0.20	
0425510000	Set Screw, Self-Locking, 10-32x3/16	4	\$0.10	
3526210000	Split Flange Bearing, Lower Arm	4		

\* 1 – Textile (W,V,D,U,X,Z,L,P), 2 – Cushion Color, 3 – Frame/Cushion Shell Color (G = Graphite, T = Titanium)  
Refer to Price Guide for all Cushion Pricing.

<sup>†</sup> Note: All part numbers and prices are for single units only.



## BACK SLIDER ASSEMBLY





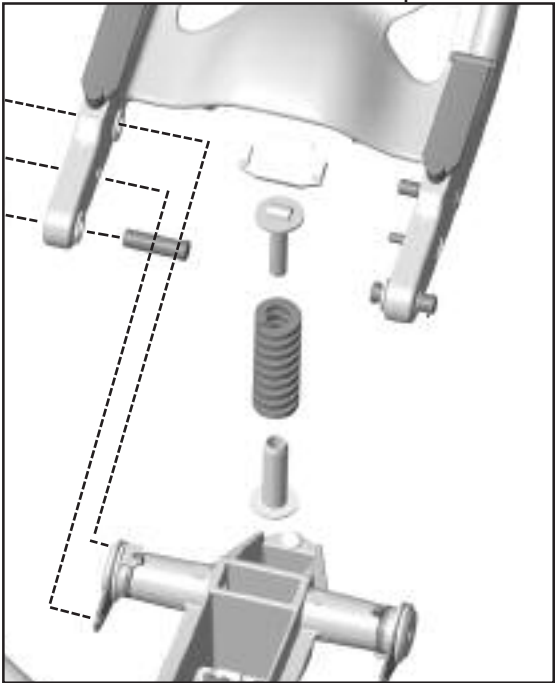
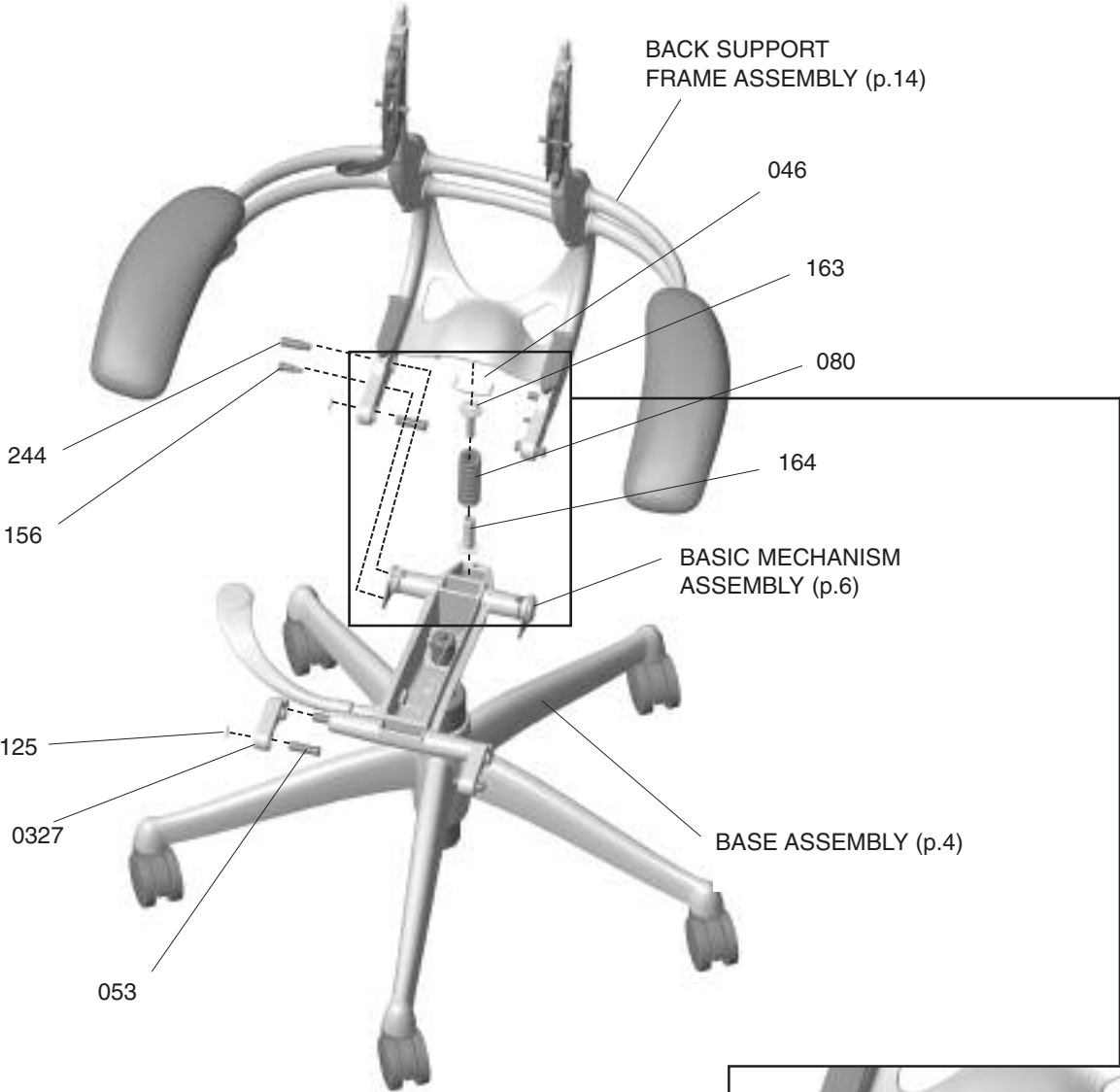
## PARTS

Number	Description	Quantity Per Assembly	Unit Price <sup>†</sup>	Comments
40 <b>063</b> 10000	Coil Spring, Release Lever	1	\$0.15	
35 <b>187</b> 10000	Guard, Back Slider	2	\$1.20	Replaces 109
50 <b>191</b> 11101	Back Slider, Right, Graphite	1	\$9.50	Replaces 072
50 <b>191</b> 11102	Back Slider, Right, Titanium	1	\$9.50	Replaces 072
50 <b>192</b> 11101	Back Slider, Left, Graphite	1	\$9.50	Replaces 073
50 <b>192</b> 11102	Back Slider, Left, Titanium	1	\$9.50	Replaces 073
20 <b>710</b> 10000	Back Slider Assembly Pin	1	\$0.25	
35 <b>011</b> 10001	Back Release Lever Assembly, Graphite	1	\$3.00	
35 <b>011</b> 10002	Back Release Lever Assembly, Titanium	1	\$3.00	

<sup>†</sup> Note: All part numbers and prices are for single units only.

## NOTES:

# BASE, STANDARD MECHANISM, BACK FRAME ASSEMBLY







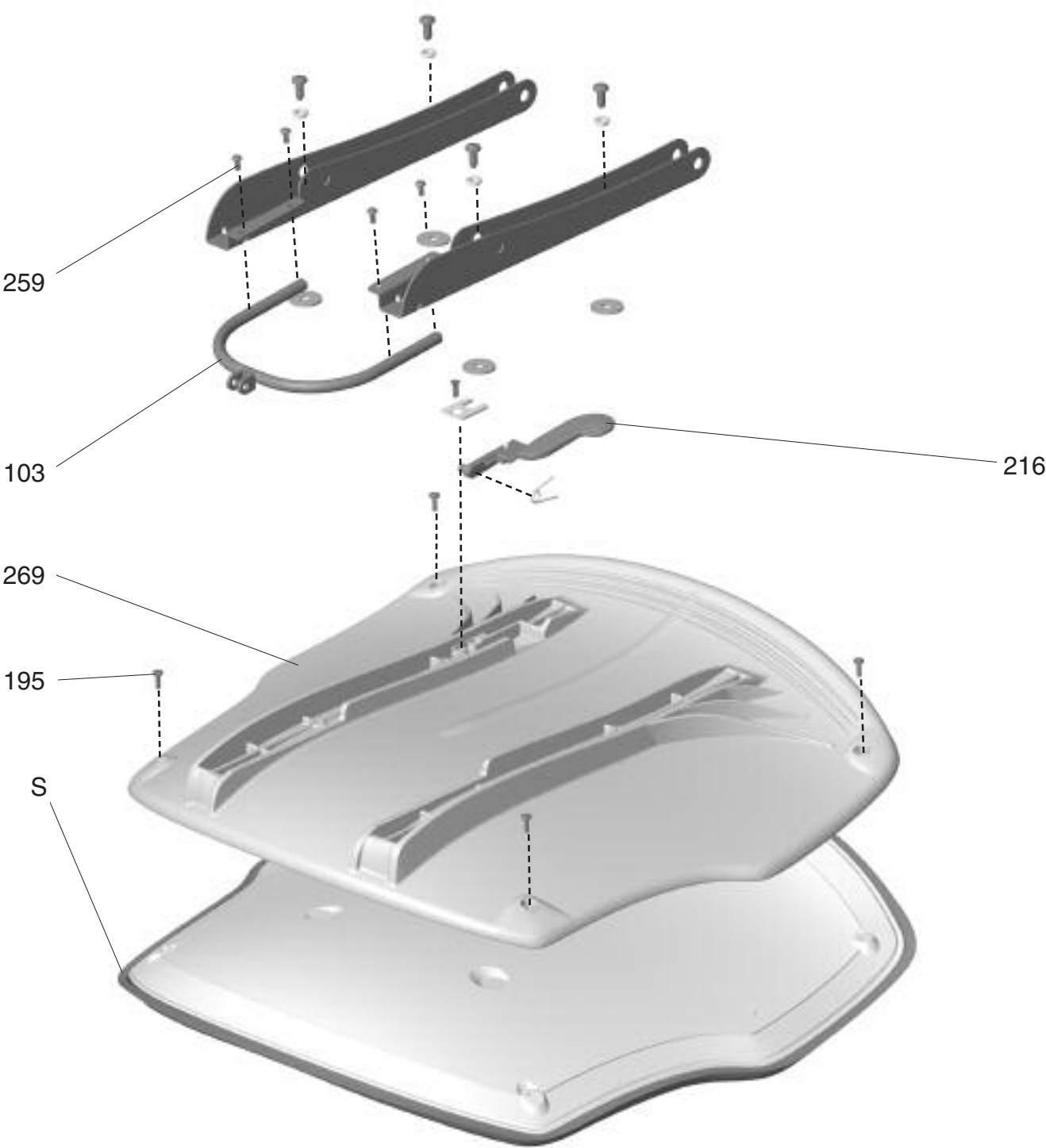
## PARTS

Number	Description	Quantity Per Assembly	Unit Price <sup>†</sup>	Comments
35 <b>046</b> 10000	Slider Block Basic	1	\$1.25	New friction packs required if chair was built after 7/15/02.
20 <b>053</b> 10000	Pin, Rail 3/8	4	\$0.65	
380005 <b>0327</b> GR	Front Link, Graphite	2		
380005 <b>0327</b> TI	Front Link, Titanium	2		
40 <b>080</b> 10000	Main Spring	1	\$6.75	
04 <b>125</b> 10000	Retaining Ring, External 3/8	4	\$0.27	
20 <b>156</b> 10000	Friction Screw	2	\$3.00	
20 <b>244</b> 10000	Pivot Screw	2	\$3.01	
20 <b>163</b> 10000	Upper Spring Guide	1	\$2.25	
20 <b>164</b> 10000	Basic Spring Guide	1	\$4.00	

<sup>†</sup> Note: All part numbers and prices are for single units only.

## NOTES:

**SEAT, CHANNELS ASSEMBLY**





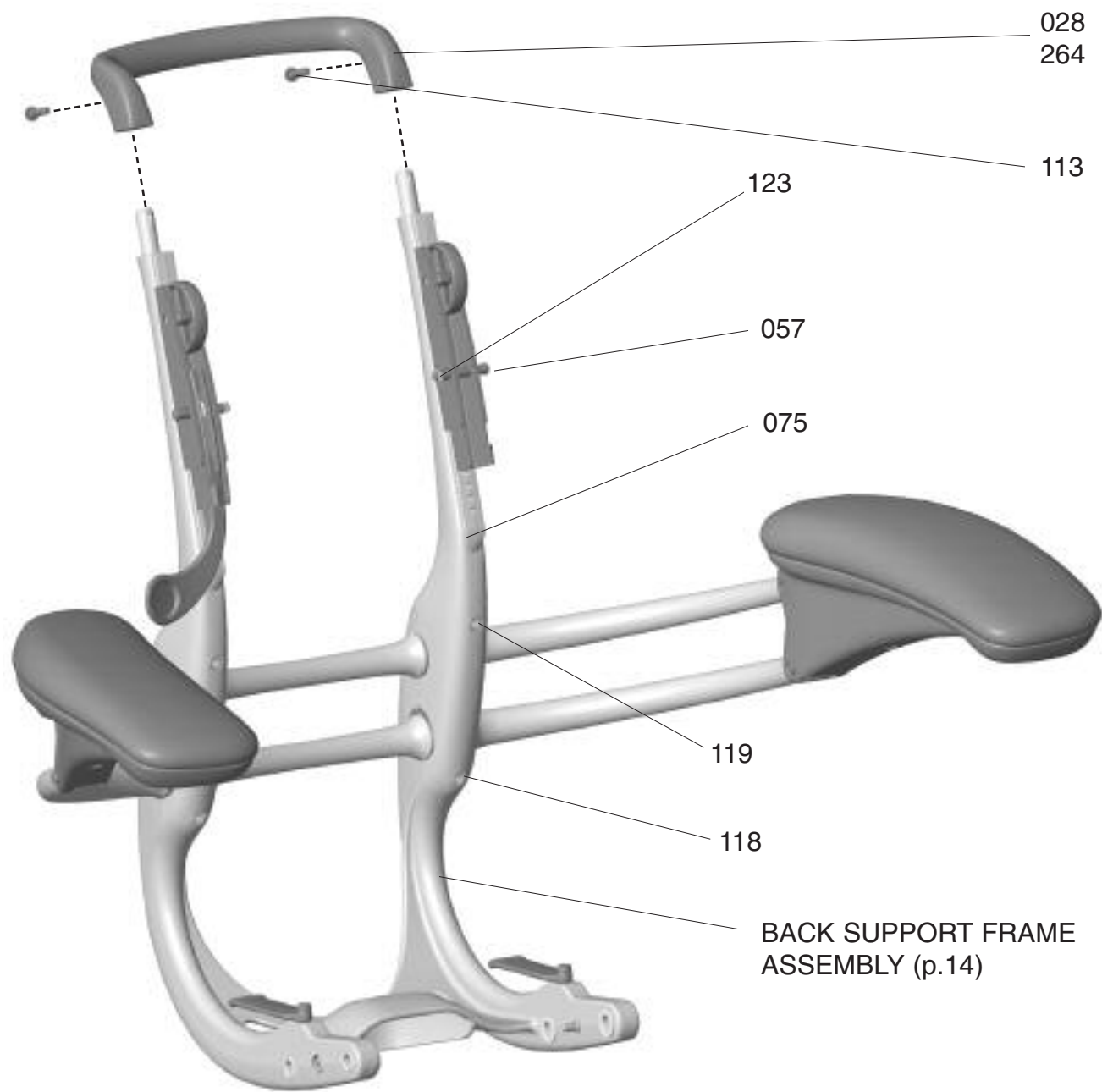
## PARTS

Number	Description	Quantity Per Assembly	Unit Price <sup>†</sup>	Comments
35 <b>269</b> 10011	Seat Shell Assembly, Graphite	1	\$103.28	
35 <b>269</b> 10012	Seat Shell Assembly, Titanium	1	\$103.28	
35 <b>290</b> 10001	Seat Shell Assembly Cal133, Graphite	1	\$103.28	
35 <b>290</b> 10002	Seat Shell Assembly Cal133, Titanium	1	\$103.28	
50 <b>103</b> 10001	Crossbar, Graphite	1		Headrest version only
50 <b>103</b> 10002	Crossbar, Titanium	1		Headrest version only
<b>S 1 2 2 2</b> *F	Upholstery, Seat, Foam	1	\$80.00	
<b>S 1 2 2 2</b> *G	Upholstery, Seat, Gel	1	\$150.00	
04 <b>195</b> 10000	Screw, Flat HD, Hi-Lo, Torx 10x1/2	5	\$0.30	
35 <b>041</b> 10001	Seat Release Lever Assembly, Graphite	1		
35 <b>041</b> 10002	Seat Release Lever Assembly, Titanium			
04 <b>259</b> 10000	Screw, Ind Hex, 8-32 x 3/8	4	\$0.16	Headrest version only

\* 1 – Textile (W,V,D,U,X,Z,L,P), 2 – Cushion Color, 3 – Frame/Cushion Shell Color (G = Graphite, T = Titanium)  
Refer to Price Guide for all Cushion Pricing.

<sup>†</sup> Note: All part numbers and prices are for single units only.

# TASK CHAIR FRAME ASSEMBLY





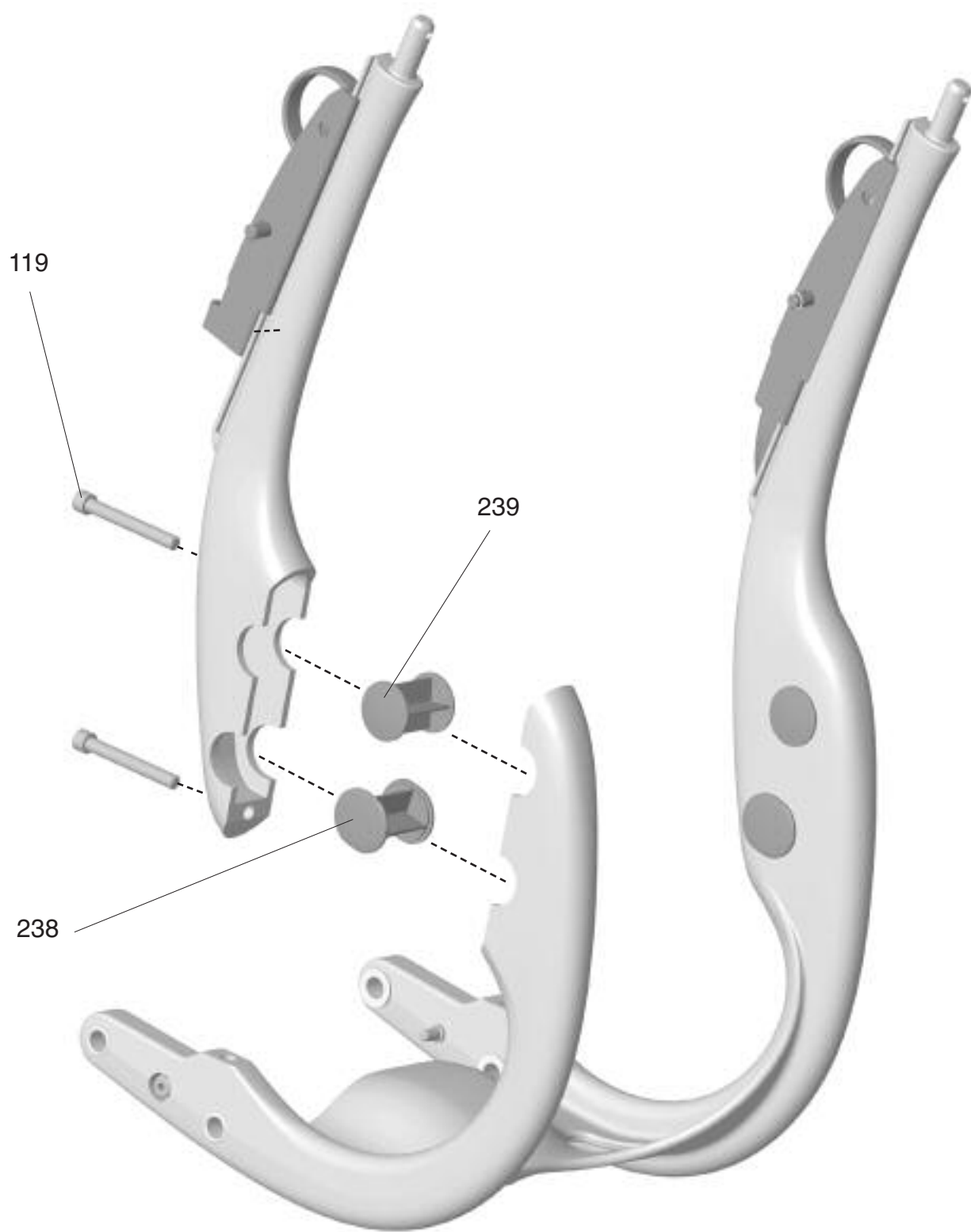
## PARTS

Number	Description	Quantity Per Assembly	Unit Price <sup>†</sup>	Comments
35 <b>028</b> 10001	Handle Brace (old), Task Chair, Graphite	1	\$7.30	<i>* for chairs with serial numbers under 150000 *</i>
35 <b>028</b> 10002	Handle Brace (old), Task Chair, Titanium	1	\$7.30	
30 <b>075</b> 11101	Upper Back Support, Graphite	1	\$25.00	
30 <b>075</b> 11102	Upper Back Support, Titanium	1	\$25.00	
30 <b>075</b> 11103	Upper Back Support, Polished Aluminum	1	\$25.00	
04 <b>113</b> 10000	Screw Socket, BTN HD, 10-32 x 3/4	2	\$0.20	
35 <b>264</b> 10001	Handle Brace w/ Bumper, Task Chair, Graphite	1	\$7.30	
35 <b>264</b> 10002	Handle Brace w/ Bumper, Task Chair, Titanium	1	\$7.30	
20 <b>057</b> 10000	Pivot Pin, Back	2	\$1.50	
04 <b>118</b> 10000	Socket Cap. Screw, 1/4-20 x 1	2	\$0.35	
04 <b>119</b> 10000	Socket Cap. Screw, 1/4-20 x 2	2	\$0.40	
04 <b>123</b> 10000	Retaining Ring, External 1/4	2	\$0.23	

<sup>†</sup> Note: All part numbers and prices are for single units only.

## NOTES:

**TASK CHAIR FRAME ASSEMBLY, ARMLESS**



*freedom*<sup>™</sup>



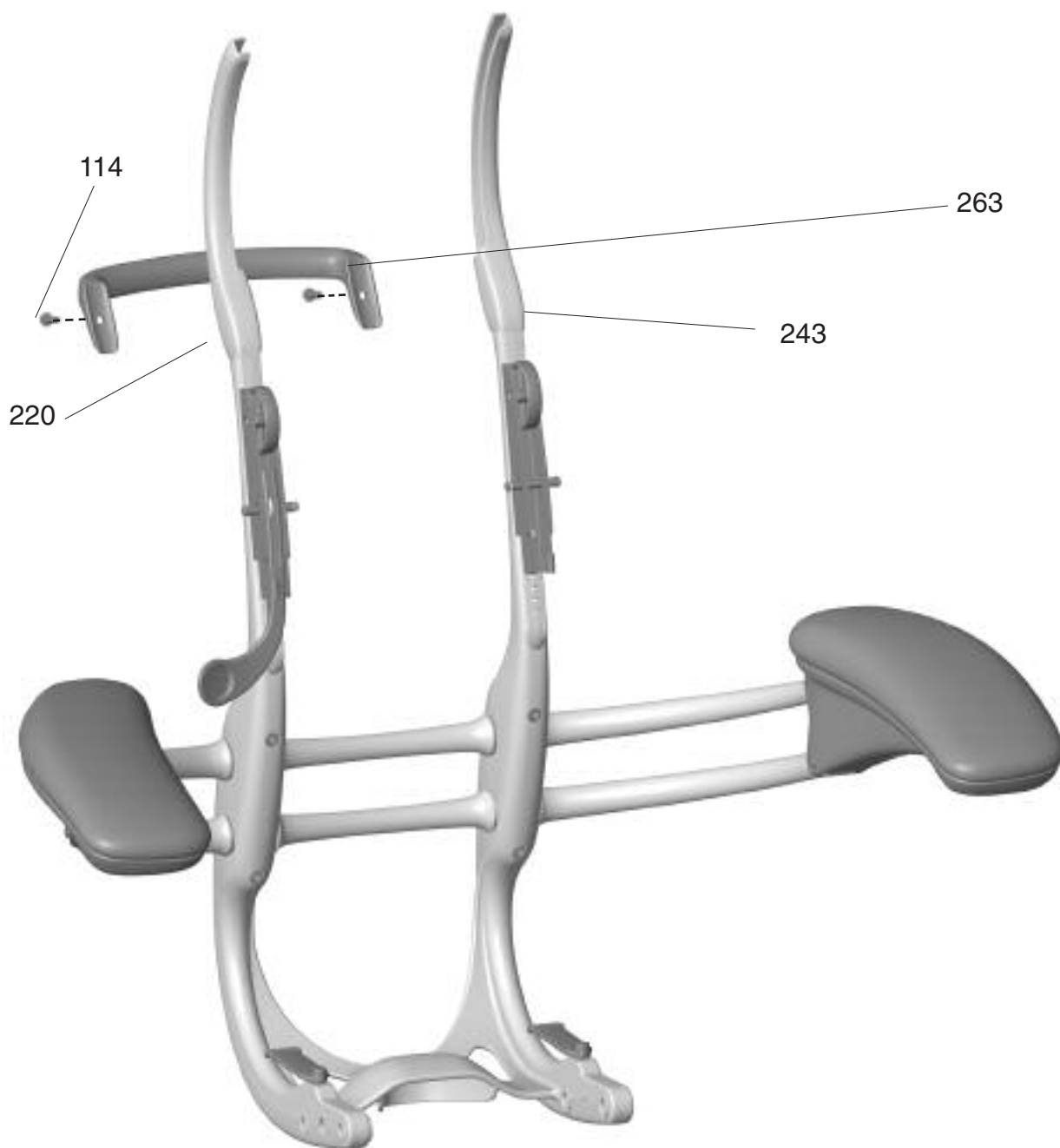
## PARTS

Number	Description	Quantity Per Assembly	Unit Price <sup>†</sup>	Comments
04 <b>119</b> 10000	Socket Cap Screw, 1/4-20x2"	4	\$0.40	
35 <b>238</b> 10001	Plug, Lower Arm, Graphite	2	\$1.75	
35 <b>238</b> 10002	Plug, Lower Arm, Titanium	2	\$1.75	
35 <b>239</b> 10001	Cap, Upper Arm, Graphite	2	\$1.75	
35 <b>239</b> 10002	Cap, Upper Arm, Titanium	2	\$1.75	

<sup>†</sup> Note: All part numbers and prices are for single units only.

## NOTES:

## HEADREST CHAIR FRAME ASSEMBLY







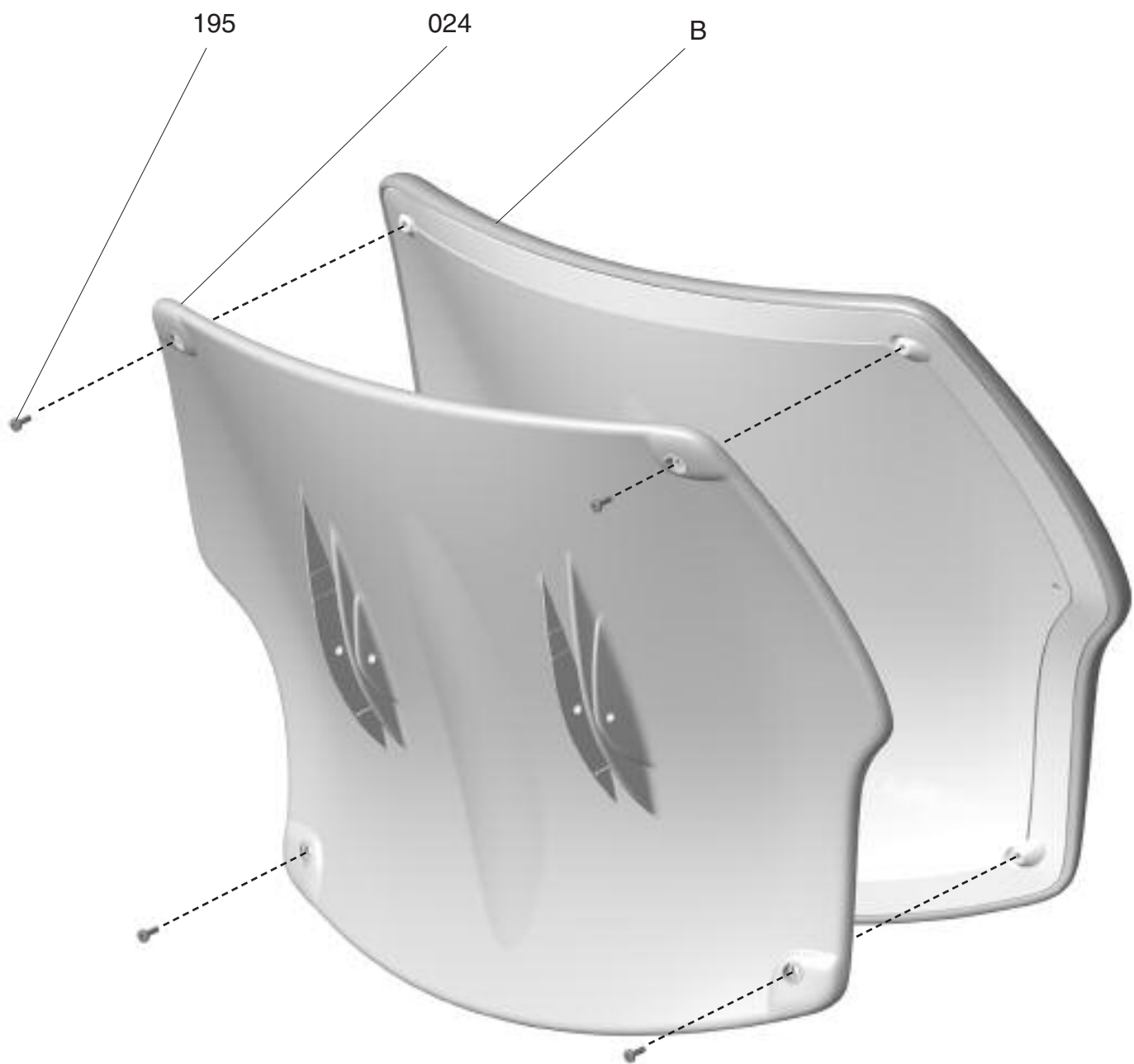
## PARTS

Number	Description	Quantity Per Assembly	Unit Price <sup>†</sup>	Comments
35 <b>263</b> 10001	Handle Brace w/ Bumper, Headrest, Graphite	1	\$20.25	
35 <b>263</b> 10002	Handle Brace w/ Bumper, Headrest, Titanium	1	\$20.25	
30 <b>243</b> 11101	Upper Back Support HR, Left, Graphite	1	\$16.00	
30 <b>243</b> 11102	Upper Back Support HR, Left, Titanium	1	\$16.00	
30 <b>243</b> 11103	Upper Back Support HR, Left, Polished	1	\$16.00	
30 <b>220</b> 11101	Upper Back Support HR, Right, Graphite	1	\$16.00	
30 <b>220</b> 11102	Upper Back Support HR, Right, Titanium	1	\$16.00	
30 <b>220</b> 11103	Upper Back Support HR, Right, Polished	1	\$16.00	
04 <b>114</b> 10000	Screw Socket, BTN HD, 10-32 x 11/4	2	\$0.35	

<sup>†</sup> Note: All part numbers and prices are for single units only.

## NOTES:

## BACKREST ASSEMBLY





## PARTS

Number	Description	Quantity Per Assembly	Unit Price <sup>†</sup>	Comments
3502410001	Back Shell, Graphite	1	\$30.00	
3502410002	Back Shell, Titanium	1	\$30.00	
3522611001	Back Shell Cal133, Graphite	1	\$30.00	
3522611002	Back Shell Cal133, Titanium	1	\$30.00	
<b>B 1 2 2 2</b> *F	Upholstery, Foam	1	\$80.00	
0419510000	Screw, Pan HD, Hi-Lo Torx 10 x 1/2"	4	\$0.30	

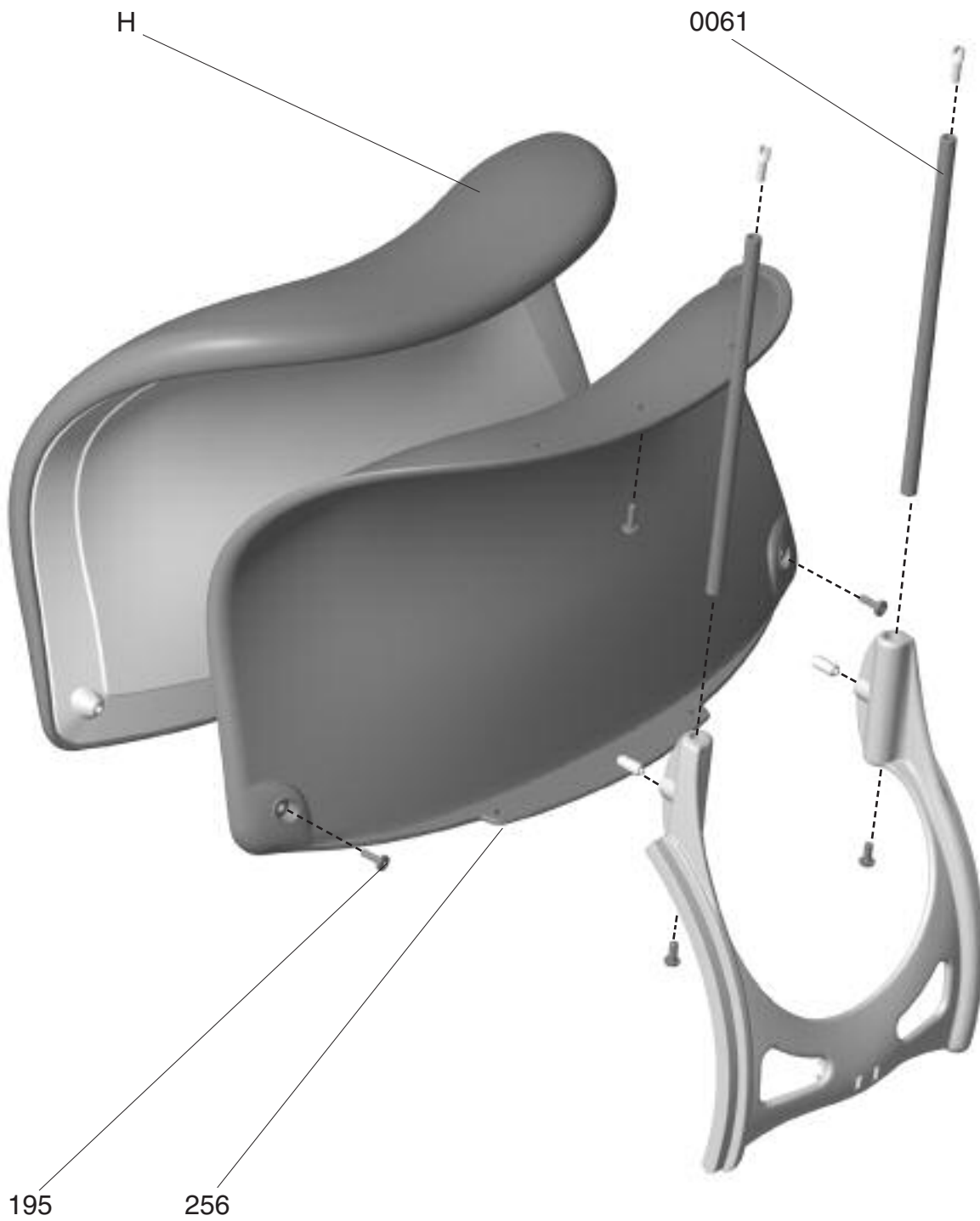
\* 1 – Textile (W,V,D,U,X,Z,L,P), 2 – Cushion Color, 3 – Frame/Cushion Shell Color (G = Graphite, T = Titanium)  
Refer to Price Guide for all Cushion Pricing.

<sup>†</sup> Note: All part numbers and prices are for single units only.

## NOTES:

---

## HEADREST SUPPORT ASSEMBLY





## PARTS

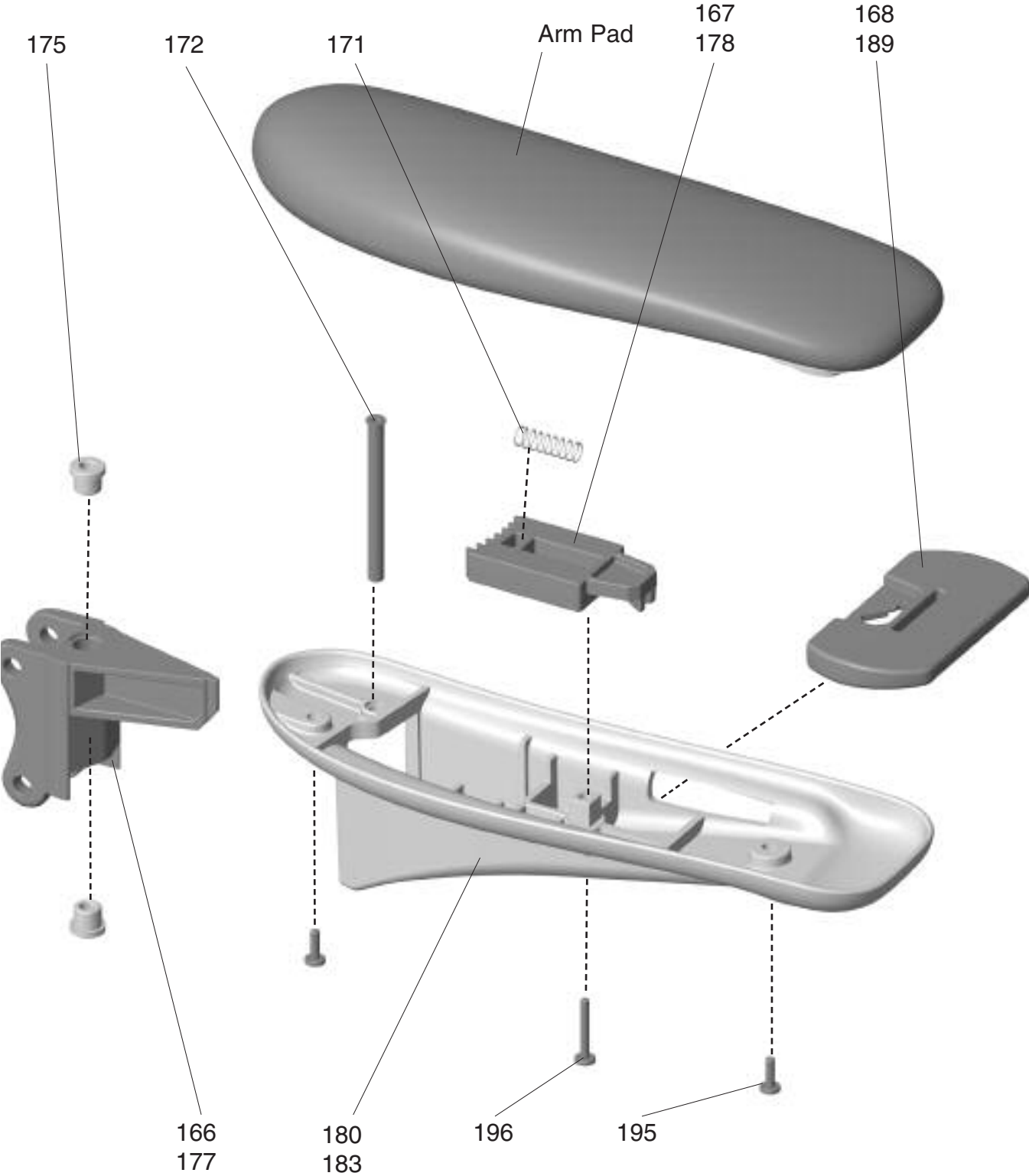
Number	Description	Quantity Per Assembly	Unit Price <sup>†</sup>	Comments
35 <b>256</b> 10001	Shell Headrest Assembly, Graphite	1	\$80.00	
35 <b>256</b> 10002	Shell Headrest Assembly, Titanium	1	\$80.00	
35 <b>229</b> 10001	Shell Headrest Assembly Cal133, Graphite	1	\$80.00	
35 <b>229</b> 10002	Shell Headrest Assembly Cal133, Titanium	1	\$80.00	
500005 <b>0061</b> NL	Rod, Headrest	2	\$6.50	
<b>H 1 2 2 2</b> *F	Upholstery, Headrest, Foam	1		
04 <b>195</b> 10000	Screw, Pan HD, Hi-Lo Torx #10 x 1/2	3	\$0.30	

\* 1 – Textile (W,V,D,U,X,Z,L,P), 2 – Cushion Color, 3 – Frame/Cushion Shell Color (G = Graphite, T = Titanium)  
Refer to Price Guide for all Cushion Pricing.

<sup>†</sup> Note: All part numbers and prices are for single units only.

## NOTES:

# ADVANCED ARM ASSEMBLY



*freedom™*



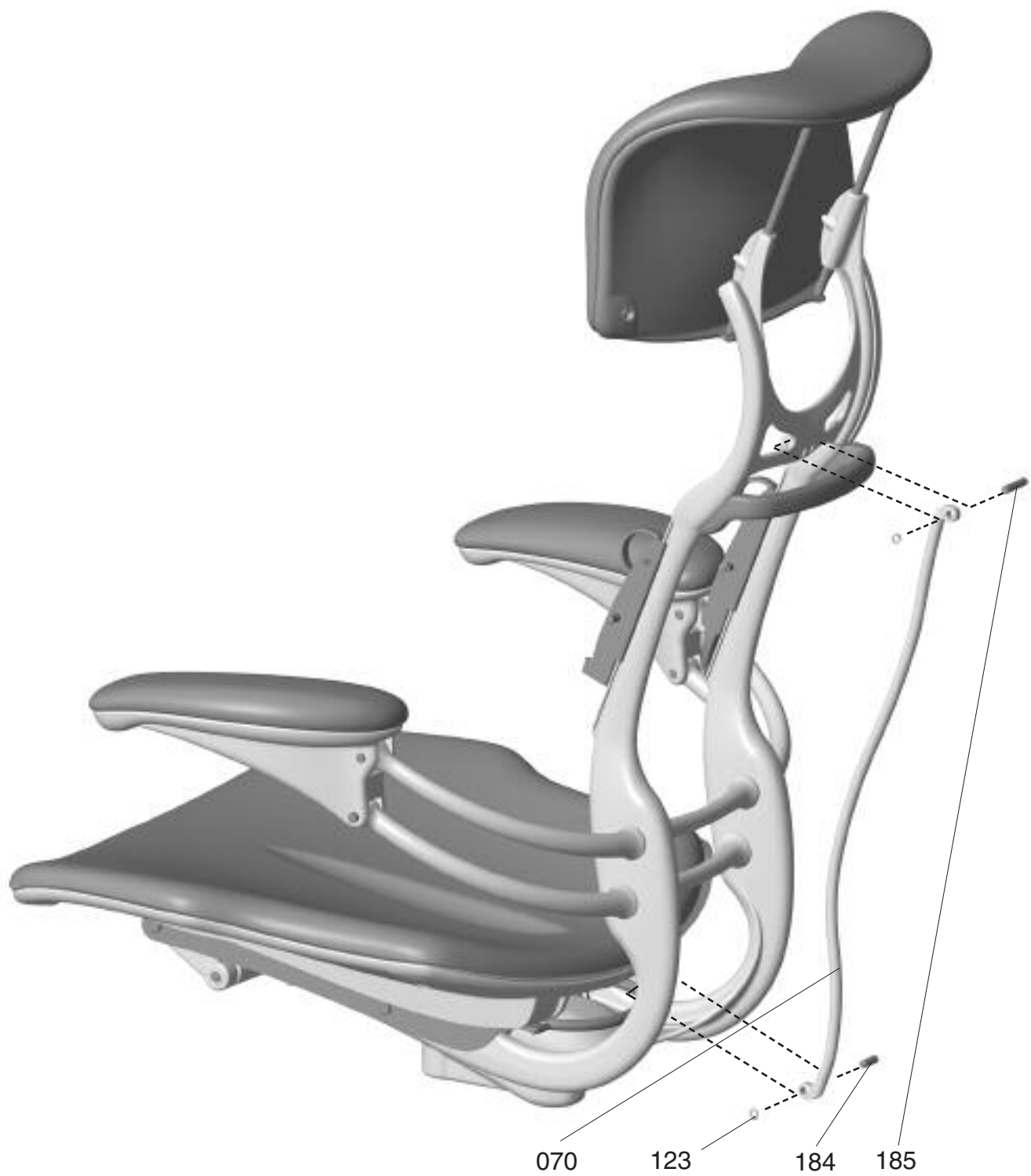
## PARTS

Number	Description	Quantity Per Assembly	Unit Price <sup>†</sup>	Comments
<b>FV</b>	Advanced Duron Arm Pads	1	\$45.00	
<b>FD</b>	Advanced Gel Arm Pads w/ Xanium Cover	1	\$75.00	
<b>FVM 1 2 2 2 *</b>	Advanced Duron Arm Pads w/ Matching Textile	1		
<b>FDM 1 2 2 2 *</b>	Advanced Gel Arm Pads w/ Matching Textile	1		
35 <b>166</b> 10001	Swivel Clevis, Right, Graphite	1	\$11.04	
35 <b>166</b> 10002	Swivel Clevis, Right, Titanium	1	\$11.04	
35 <b>167</b> 10001	Sliding Index Bar, Right, Graphite	1		
35 <b>167</b> 10002	Sliding Index Bar, Right, Titanium	1		
35 <b>168</b> 10001	Sliding Lock Release Control, Right, Graphite	1		
35 <b>168</b> 10002	Sliding Lock Release Control, Right, Titanium	1		
40 <b>171</b> 10000	Spring	1		
20 <b>172</b> 10000	Swivel Arm Pin	1		
35 <b>175</b> 10001	1/4" Bearing, Graphite, Plastic	2	\$1.38	
35 <b>177</b> 10001	Swivel Clevis, Left, Graphite	1	\$11.04	
35 <b>177</b> 10002	Swivel Clevis, Left, Titanium	1	\$11.04	
35 <b>178</b> 10001	Sliding Index Bar, Left, Graphite	1		
35 <b>178</b> 10002	Sliding Index Bar, Left, Titanium	1		
35 <b>180</b> 10001	Swivel Arm Support, Left, Graphite	1	\$18.29	
35 <b>180</b> 10002	Swivel Arm Support, Left, Titanium	1	\$18.29	
35 <b>183</b> 10001	Swivel Arm Support, Right, Graphite	1	\$18.29	
35 <b>183</b> 10002	Swivel Arm Support, Right, Titanium	1	\$18.29	
35 <b>189</b> 10001	Sliding Lock Release Control, Left, Graphite	1		
35 <b>189</b> 10002	Sliding Lock Release Control, Left, Titanium	1		
04 <b>195</b> 10000	Screw, Pan HD, Hi-Lo, Torx 10 x 1/2	4	\$0.30	
04 <b>196</b> 10000	Screw, Pan HD, Hi-Lo, Torx 10 x 1	2	\$0.20	

\* 1 – Textile (W,V,D,U,X,Z,L,P), 2 – Cushion Color, 3 – Frame/Cushion Shell Color (G = Graphite, T = Titanium)  
Refer to Price Guide for all Cushion Pricing.

<sup>†</sup> Note: All part numbers and prices are for single units only.

## HEADREST PUSH ROD ASSEMBLY



*freedom*<sup>™</sup>





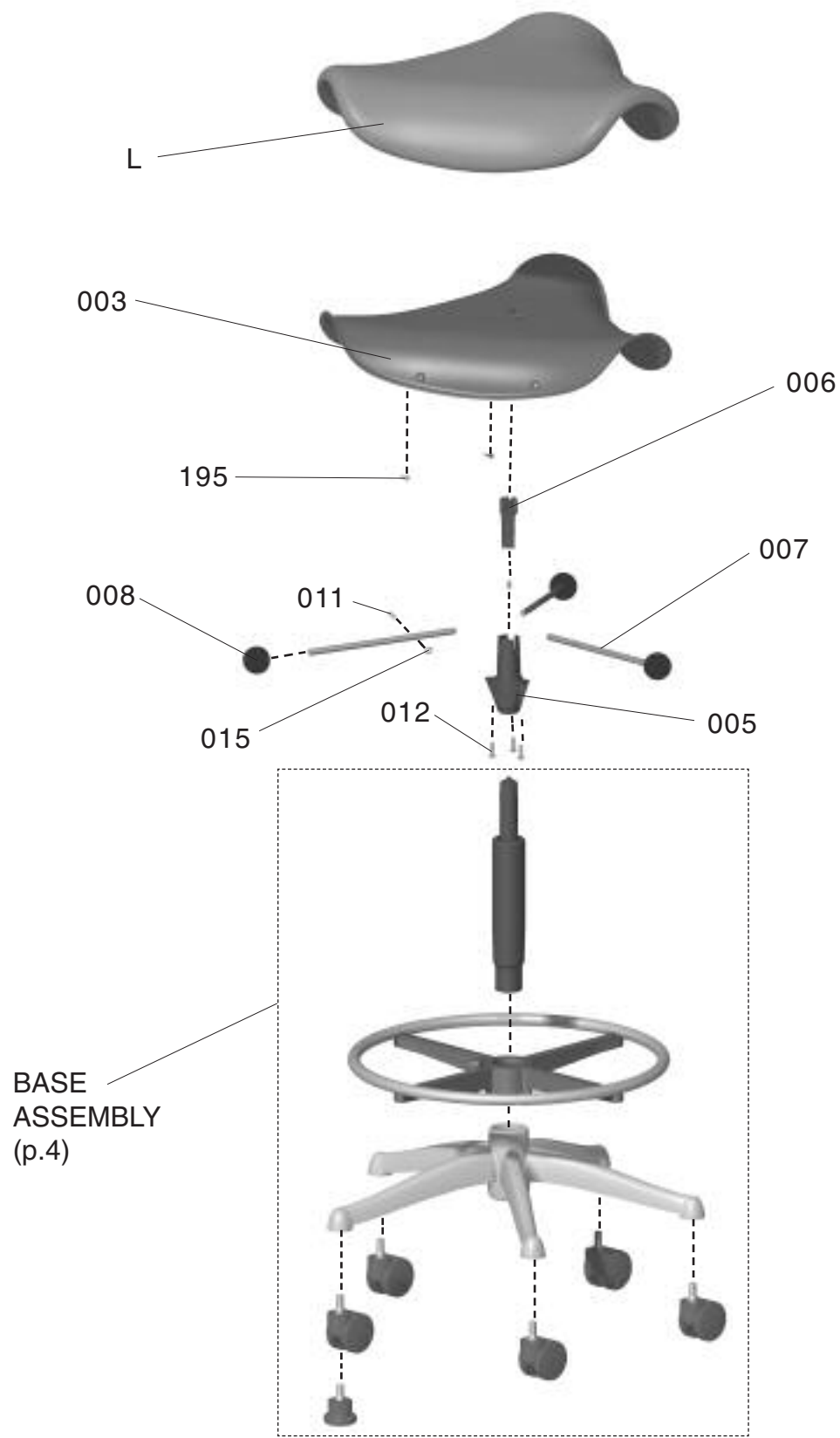
## PARTS

Number	Description	Quantity Per Assembly	Unit Price <sup>†</sup>	Comments
50 <b>070</b> 10001	Push Rod Assembly, Graphite	1	\$24.15	
50 <b>070</b> 10002	Push Rod Assembly, Titanium	1	\$24.15	
04 <b>123</b> 10000	Retaining Ring, External 1/4	2	\$0.23	
20 <b>184</b> 10000	Pin, Crossbar	1	\$1.29	
20 <b>185</b> 10000	Pin, Moving Support	1	\$1.29	

<sup>†</sup> Note: All part numbers and prices are for single units only.

## NOTES:

# SADDLE SEAT ASSEMBLY



*freedom*<sup>TM</sup>



## PARTS

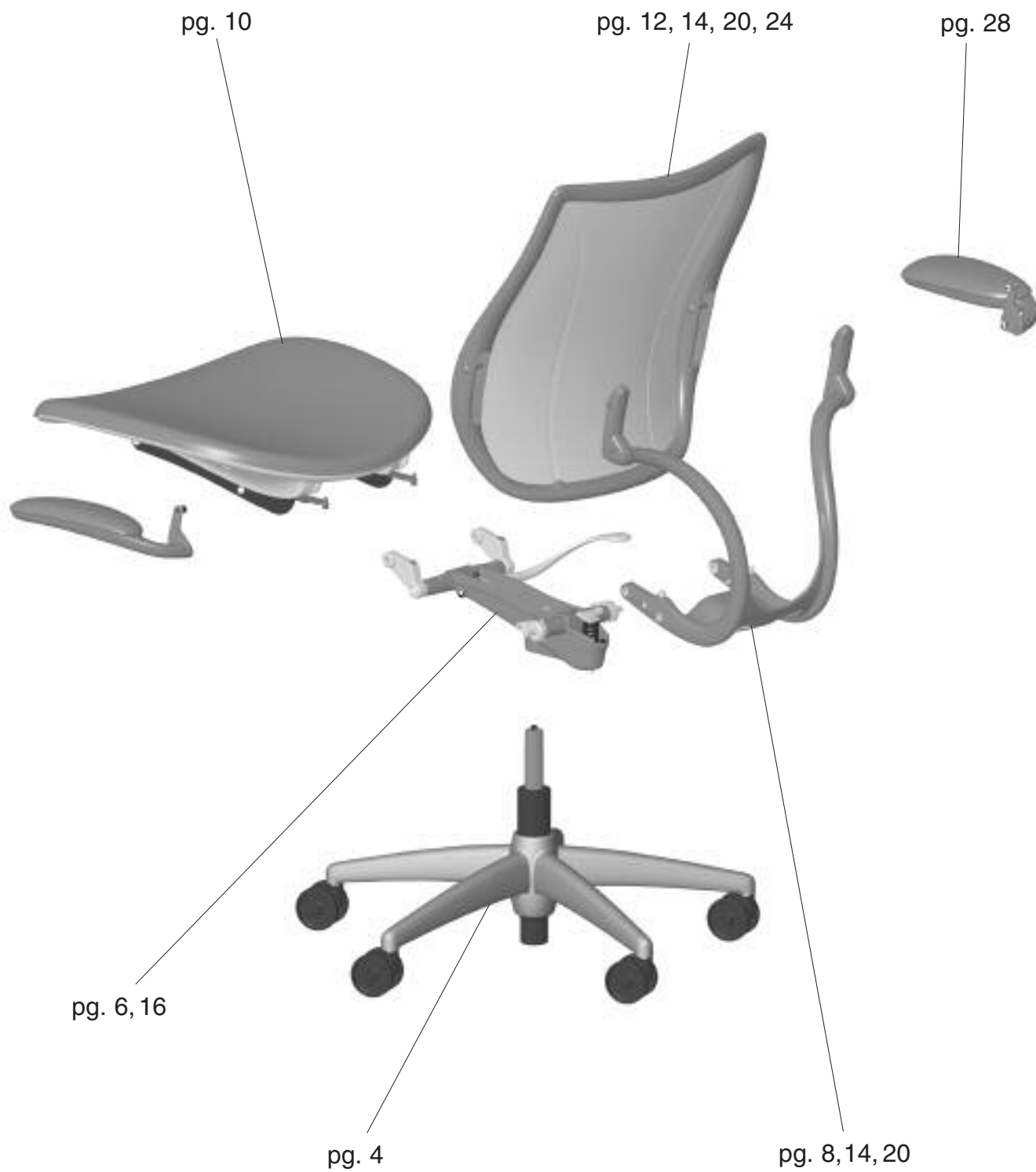
Number	Description	Quantity Per Assembly	Unit Price <sup>†</sup>	Comments
F-SADDLE-HUB ASSY	Complete Seat Assembly	1	\$100.00	<i>For use with saddles that have sustained damage to the hub. Includes everything but the base, cylinder and cushion</i>
30 <b>005</b> 11100	Hub	1	\$56.90	
35 <b>006</b> 10000	Slider	1	\$10.00	
<b>L 1 2 2 2</b> *	Saddle Cushion, Foam	1		
35 <b>003</b> 10001	Saddle Shell, Graphite	1	\$50.00	
20 <b>007</b> 10000	Actuator Rod	3	\$10.00	
85 <b>008</b> 10000	1-1/2" Soft Touch Knob	3	\$8.00	
20 <b>111</b> 10000	Pin Actuator for Stool	3	\$2.00	
04 <b>012</b> 10000	#14x1.5" Plastite Torx button hd	3	\$0.50	
04 <b>015</b> 10000	3/16" Push on Retaining Ring	3	\$0.10	
04 <b>195</b> 10000	Screw, Torx pan head, Hi-Lo #10x1/2	6	\$0.30	

\* 1 – Textile (W,V,D,U,X,Z,L,P), 2 – Cushion Color, 3 – Frame/Cushion Shell Color (G = Graphite, T = Titanium)

Refer to Price Guide for all Cushion Pricing.

<sup>†</sup> Note: All part numbers and prices are for single units only.

## OVERALL ASSEMBLY



*Liberty*®

# Table of Contents



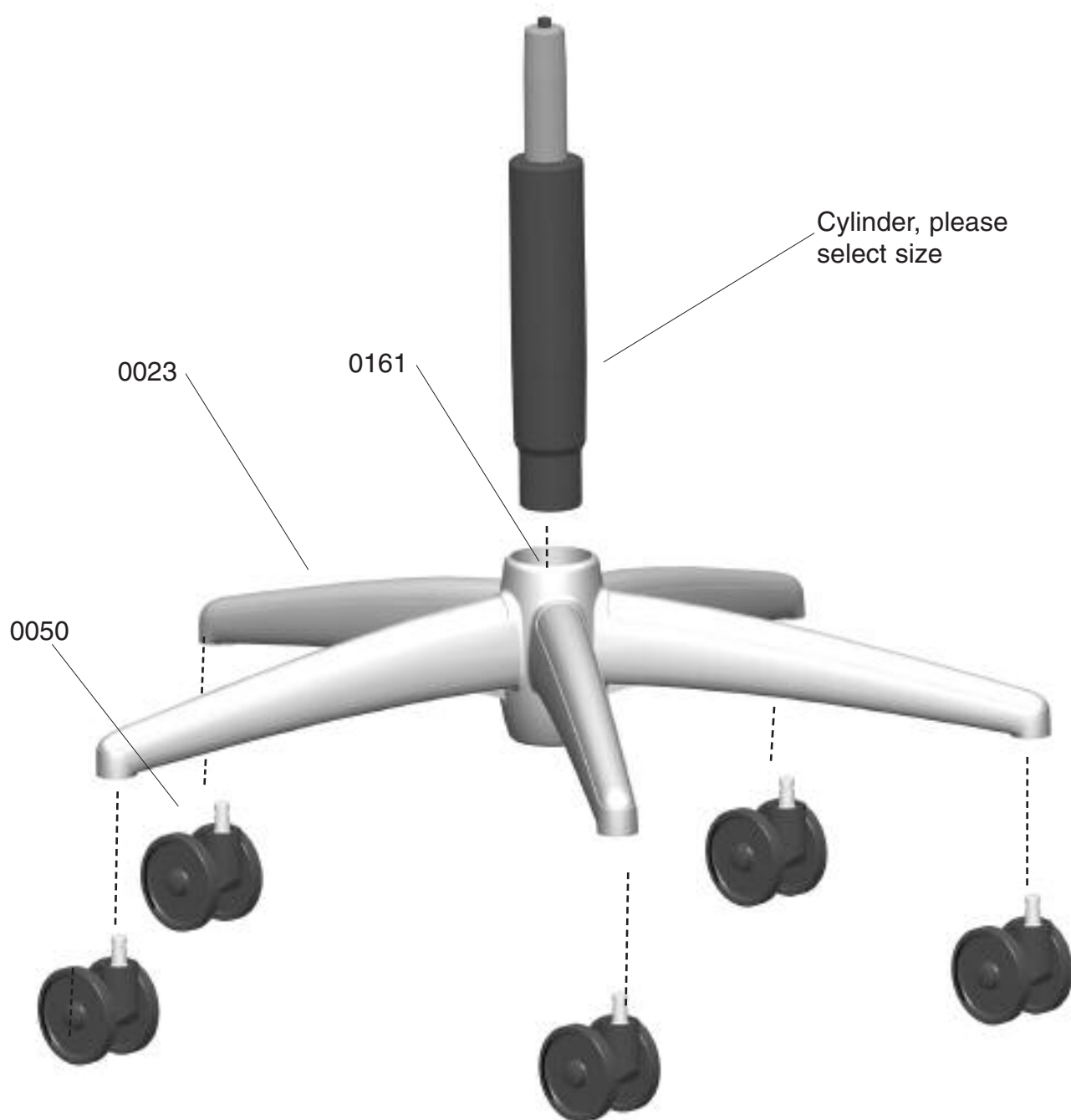
## PARTS

56	OVERALL ASSEMBLY
58	BASE ASSEMBLY
60	BASIC MECHANISM ASSEMBLY
62	LOWER BACK SUPPORT ASSEMBLY
64	ARM ASSEMBLY
14	BACK SUPPORT FRAME ASSEMBLY, HEADREST
16	BASE, STANDARD MECHANISM, BACK FRAME ASSEMBLY
18	SEAT, CHANNELS ASSEMBLY
20	TASK CHAIR FRAME ASSEMBLY
22	TASK CHAIR FRAME ASSEMBLY, ARMLESS
30	HEIGHT ADJUSTABLE ARM ASSEMBLY

## REPAIR

38	BACK SLIDER WITH GUARD ASSEMBLY
40	SEAT CHANNEL WITH GUARD ASSEMBLY
42	ARM SUPPORT AND ARM PAD REPLACEMENT
46	UPHOLSTERY ASSEMBLIES
48	CLEANING INSTRUCTIONS
49	TEXTILE CODES

## BASE ASSEMBLY





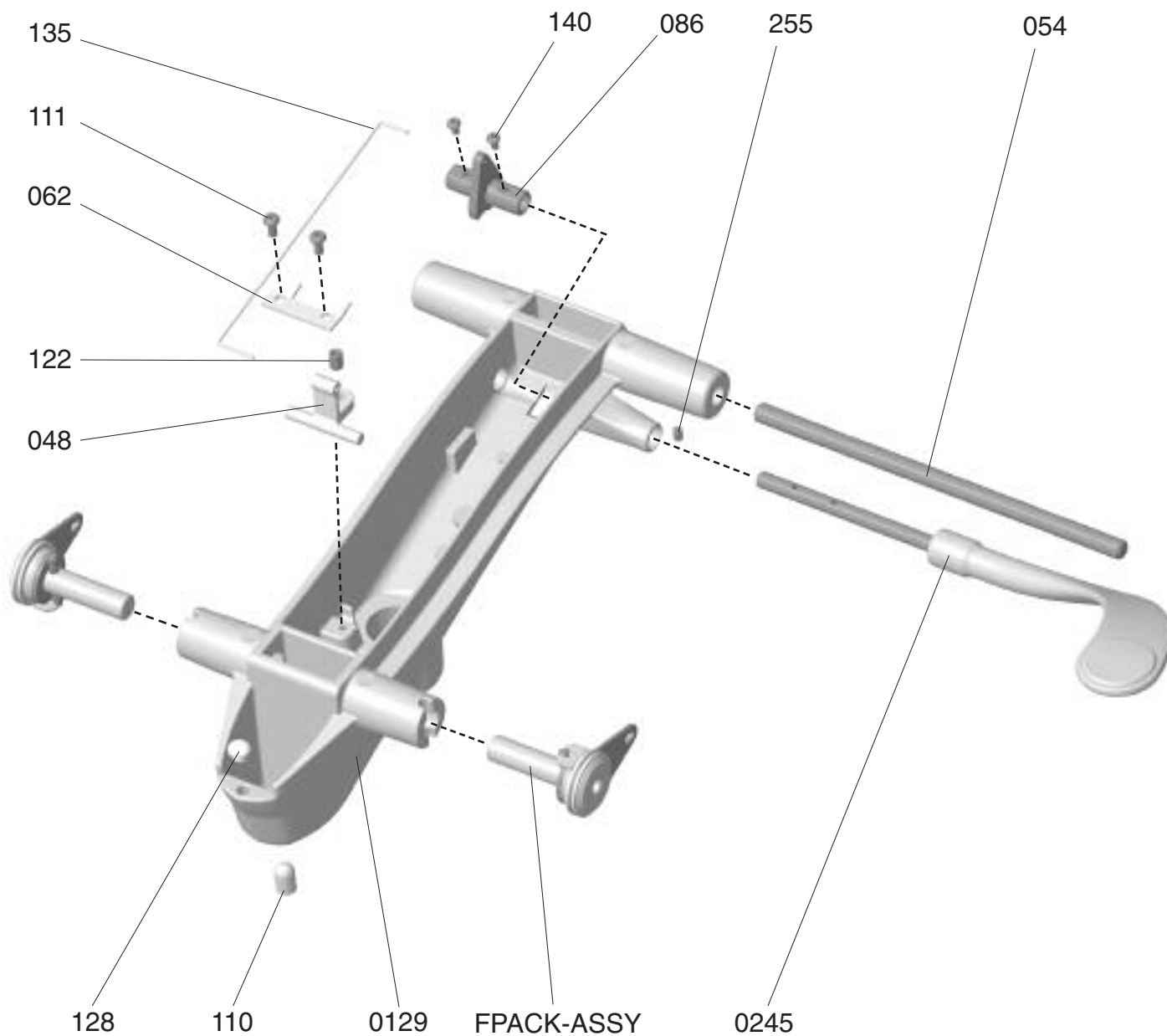
## PARTS

Number	Description	Quantity Per Assembly	Unit Price <sup>†</sup>	Comments
L-BASE-BL-CAPS	Assembled, Black Base w/ Alum Caps, Casters	1	\$100.00	Includes base, caps, shim & casters
L-BASE-BL	Assembled, Black Base, Black Casters	1		Includes base, shim & casters
L-BASE-SL-CAPS	Assembled - Silver Base w/ Alum Caps, Casters	1	\$100.00	Includes base, caps, shim & casters
L-BASE-SL	Assembled - Silver Base - Silver Casters	1	\$221.60	Includes base, shim & casters
3800380023BL	Base, Liberty, Black	1	\$113.70	
3800380023SL	Base, Liberty, Silver	1	\$113.70	
8521110000	Cylinder, Low, 3.75 Stroke	1	\$40.00	
8521110001	Cylinder, Low Chrome, 3.75 Stroke	1		
8506810000	Cylinder, Standard, 5 Stroke	1	\$25.00	
8506810004	Cylinder, Standard Chrome, 5 Stroke	1		
8522210000	Cylinder, 5" Optional, 5 Stroke	1	\$35.00	
8522210001	Cylinder, 5" Optional Chrome, 5 Stroke	1		
5000050315BL	Cylinder, Height Return, 5 Stroke	1		
8521010000	Cylinder, High, 8 Stroke	1	\$37.00	
8521010001	Cylinder, High Chrome, 8 Stroke	1	\$37.00	
8522310000	Cylinder, Extra High, 10 Stroke	1	\$40.00	
3800380024AL	Stainless Base Cap, Liberty, Polished	5	\$15.30	
3800380050BL	Caster, Liberty, Black	5	\$15.30	
3800380050SL	Caster, Liberty, Silver	5	\$15.30	
3800380063BL	Glide, Liberty, Black	5	\$6.50	Not Shown
3800380063SL	Glide, Liberty, Silver	5	\$6.50	Not Shown
3800380161NL	Shim, Base	1	\$10.00	

\* 1 – Textile (W,V,X,Z,L,P,U,D,E) 2 – Textile/Mesh Color 3 – Frame Color (B, V, L, A, P) 4 – Mesh (M,C, T) 5 – Arm Pad Color (S, B)  
 Refer to Price Guide for all Cushion Pricing.

† Note: All part numbers and prices are for single units only.

## BASIC MECHANISM ASSEMBLY



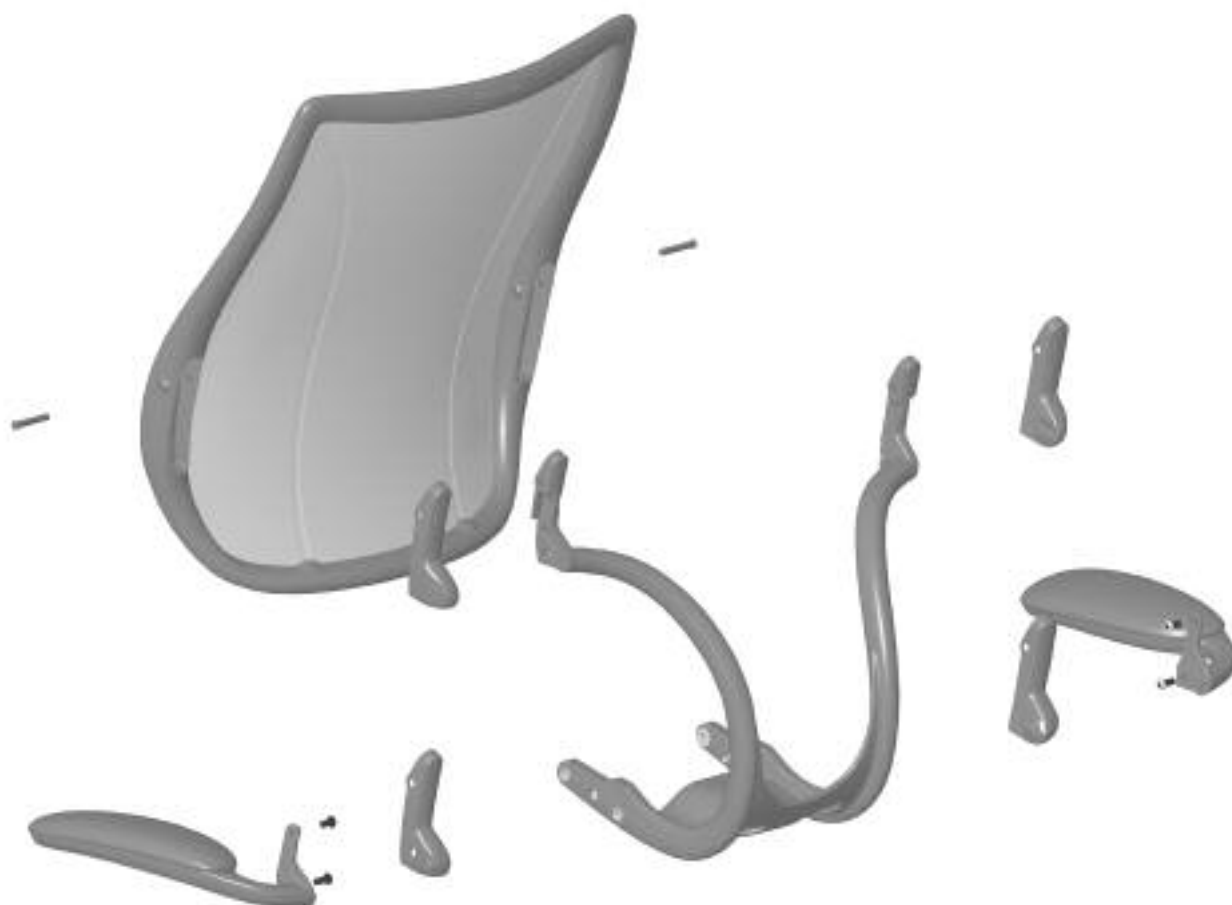




## PARTS

Number	Description	Quantity Per Assembly	Unit Price <sup>†</sup>	Comments
380050 <b>0129</b> BL	Basic Housing, Black	1	\$55.00	
380050 <b>0129</b> SL	Basic Housing, Silver	1	\$55.00	
380005 <b>0245</b> BL	Actuator Handle Assembly, Black	1	\$15.00	
380005 <b>0245</b> SL	Actuator Handle Assembly, Silver	1	\$15.00	
380005 <b>0245</b> AL	Actuator Handle Assembly, Polished Aluminum	1	\$15.00	
33 <b>048</b> 11000	Actuator, Basic Cylinder	1	\$1.50	
20 <b>054</b> 10000	Axle, Main	1	\$1.50	
50 <b>062</b> 10000	Retainer, Cylinder Actuator	1	\$0.50	
35 <b>086</b> 10000	Single Action Lever	1	\$1.35	
20 <b>110</b> 10000	Spring Pivot	1	\$1.50	
04 <b>111</b> 10000	Screw, Socket, BTN HD 8-32 x 3/8	2	\$0.20	
04 <b>255</b> 10000	Set Screw, w/lock Patch 10-32 x 3/16	1	\$0.20	
04 <b>122</b> 10000	Set Screw, w/lock Patch 1/4-20 x 3/8	1	\$1.75	
35 <b>128</b> 10000	Bumper	1	\$0.20	
50 <b>135</b> 10000	Pull Wire, Basic	1	\$0.40	
04 <b>140</b> 10000	Screw, Socket, BTN HD, 6/32x1/4	2	\$0.30	
<b>FPACK-ASSY</b>	Friction Pack Assembly	2	\$30.00	

## BACK AND ARM ASSEMBLY





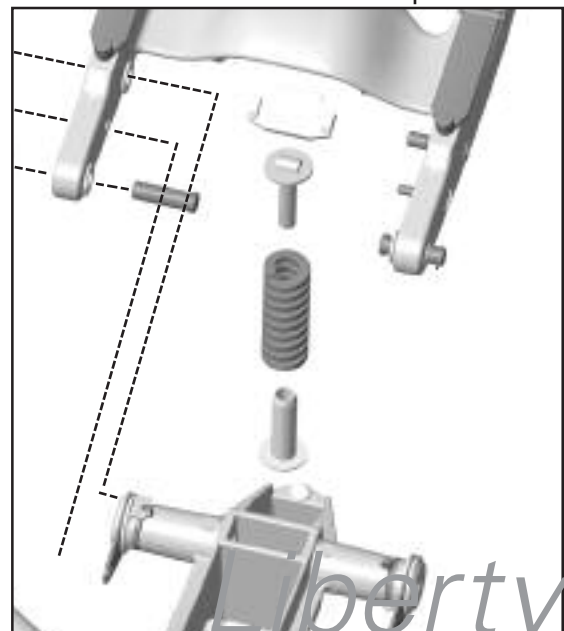
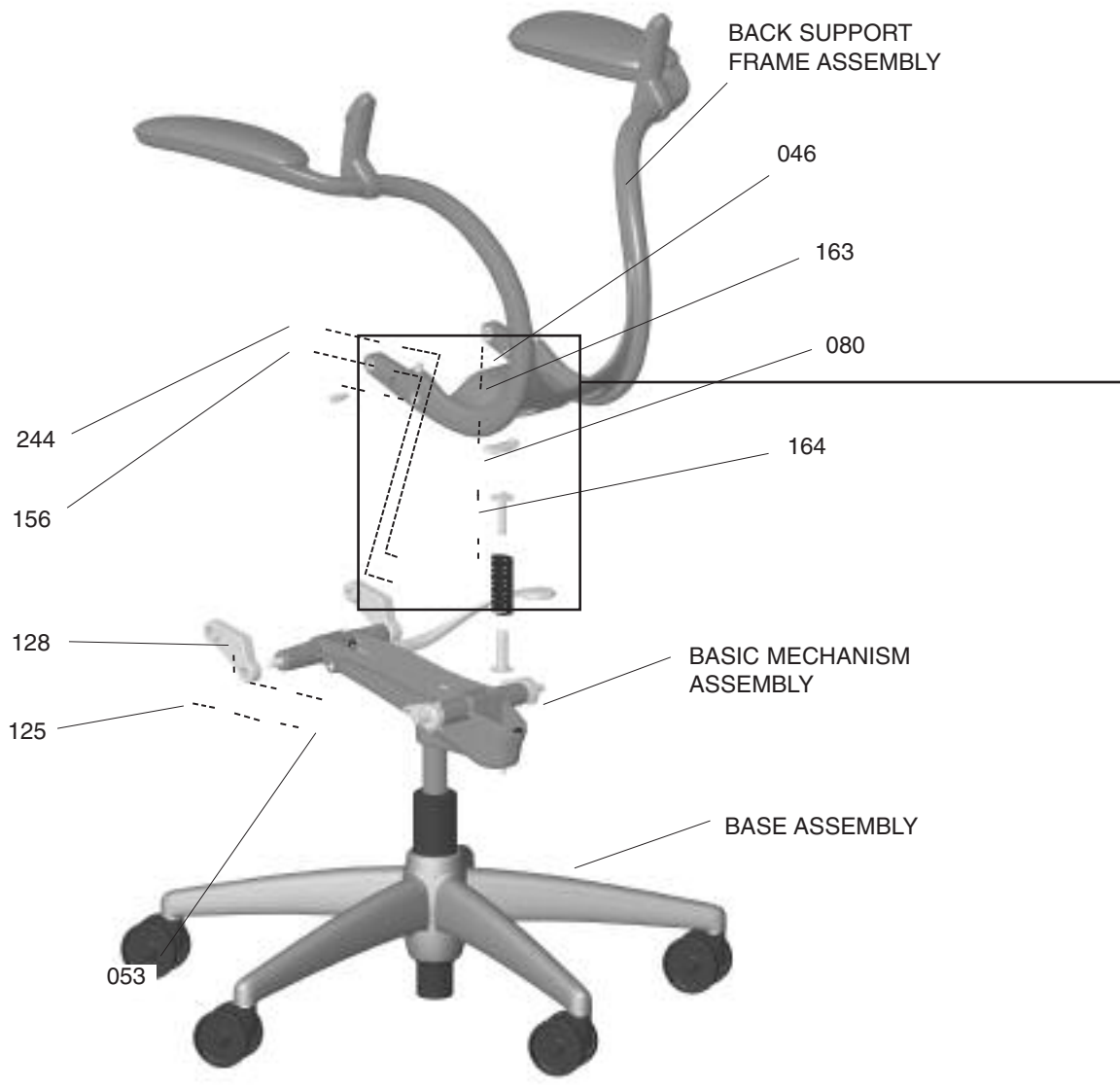
## PARTS

Number	Description	Quantity Per Assembly	Unit Price <sup>†</sup>	Comments
3800380060NL	Screw 1/4-20 x 5/8 BTN HD, lock patch	4		
LDA 5	Fixed Duron Arm Pads	1	\$45.00	
LGA	Fixed Gel Arm Pads, Xanium	1	\$75.00	
LDAM 1 2 2 2	Fixed Duron Arm Pads w/ Matching Textile	1		
LGAM 1 2 2 2	Fixed Gel Arm Pads w/ Matching Textile	1		
3800380010BL	Arm Pad, Right Duron - Black	1		
3800380011BL	Arm Pad, Left Duron - Black	1		
3800380010SL	Arm Pad, Right Duron - Silver	1		
3800380011SL	Arm Pad, Left Duron - Silver	1		
3800380012NL	Fixed Arm Ring, Right	1		
3800380013NL	Fixed Arm Ring, Left	1		
3800380008AL	Arm Support Right, Polished, Liberty	1	\$35.88	
3800380009AL	Arm Support Left, Polished, Liberty	1	\$35.88	
3800380008BL	Arm Support Right, Black, Liberty	1		
3800380009BL	Arm Support Left, Black, Liberty	1		
3800380008SL	Arm Support Right, Silver, Liberty	1		
3800380009SL	Arm Support Left, Silver, Liberty	1		
3800380160NL	#6x5/8 Pan Hd. Plastite Arm Pad Screw	8		
3800380014BL	#6x0.5 Torx Head Plastite Screw Black	4		
3800380051NL	Pivot Pin, Back Frame	2		
3800380029NL	Torsion Spring ( <i>not visible</i> )	2		
3800380031BL	Pivot Cover, Left, Black	1		
3800380032BL	Pivot Cover Right, Black	1		
3800380031SL	Pivot Cover, Left, Silver	1		
3800380032SL	Pivot Cover Right, Silver	1		
3800380033BL	Pivot Cover Right, Armless, Black	1		
3800380034BL	Pivot Cover Left Armless, Black	1		
3800380033SL	Pivot Cover Right, Armless, Silver	1		
3800380034SL	Pivot Cover Left Armless, Silver	1		
3800380015NL	.015 Double Sided Tape	12		

\* 1 – Textile (W,V,X,Z,L,P,U,D,E) 2 – Textile/Mesh Color 3 – Frame Color (B, V, L, A, P) 4 – Mesh (M,C, T) 5 – Arm Pad Color (S, B)  
Refer to Price Guide for all Cushion Pricing.

† Note: All part numbers and prices are for single units only.

# BASE, STANDARD MECHANISM, BACK FRAME ASSEMBLY



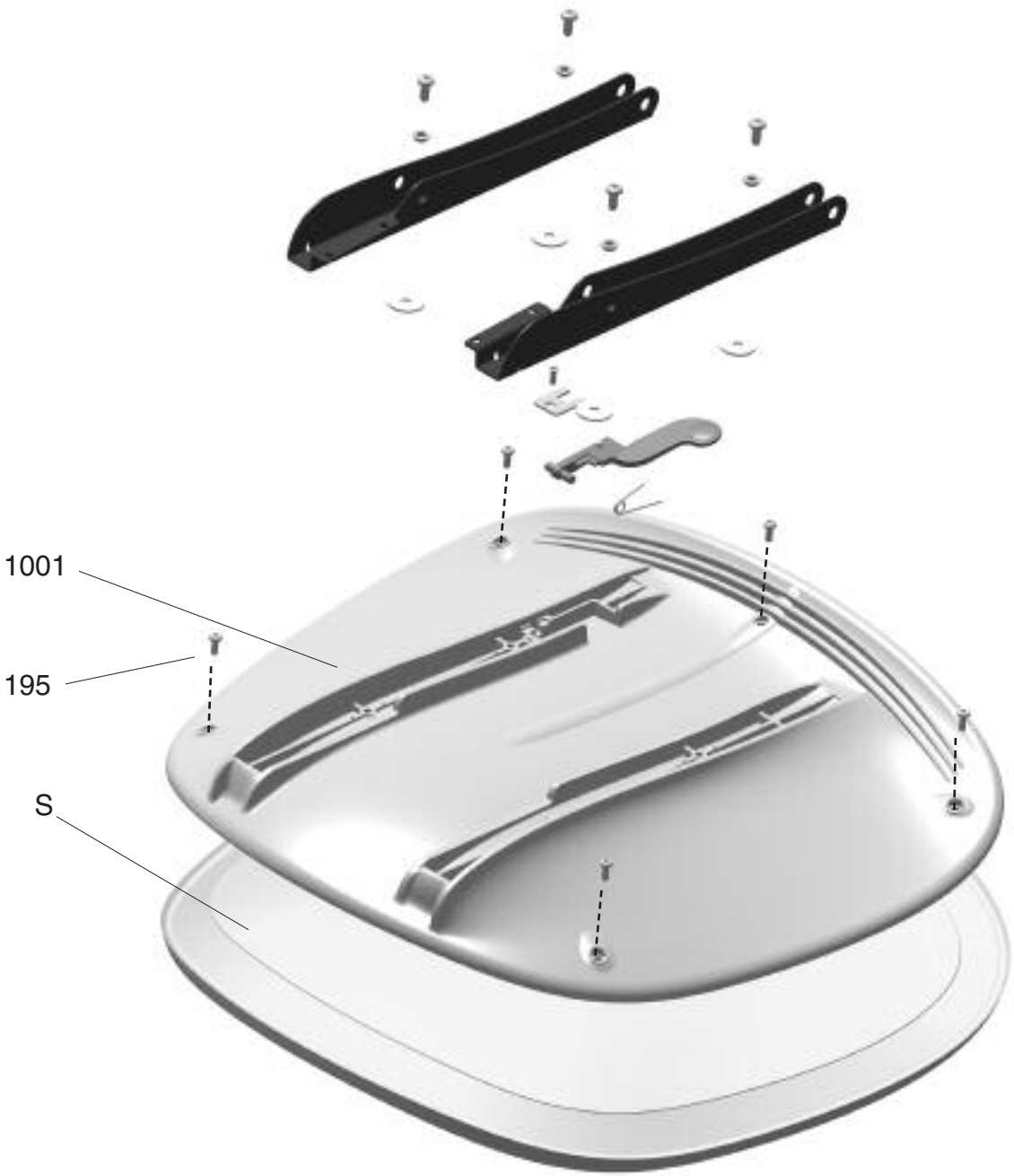


## PARTS

Number	Description	Quantity Per Assembly	Unit Price <sup>†</sup>	Comments
3504610000	Slider Block Basic	1	\$1.25	
2005310000	Pin, Seat Channel 3/8"	4	\$0.65	
4008010000	Main Spring	1	\$6.75	
0412510000	Retaining Ring, External 3/8"	4	\$0.27	
2015610000	Friction Screw	2	\$3.00	
2024410000	Pivot Screw	2	\$3.01	
2016310000	Upper Spring Guide	1	\$2.25	
2016410000	Basic Spring Guide	1	\$4.00	
3800380002AL	Back Support, Liberty, Polished	1	\$140.24	
3800380002BL	Back Support, Liberty, Black	1	\$78.52	
3800380002SL	Back Support, Liberty, Silver	1	\$78.52	
3800050327BL	Front Link, Black	2		
3800050327SL	Front Link, Silver	2		

<sup>†</sup> Note: All part numbers and prices are for single units only.

SEAT, CHANNELS ASSEMBLY





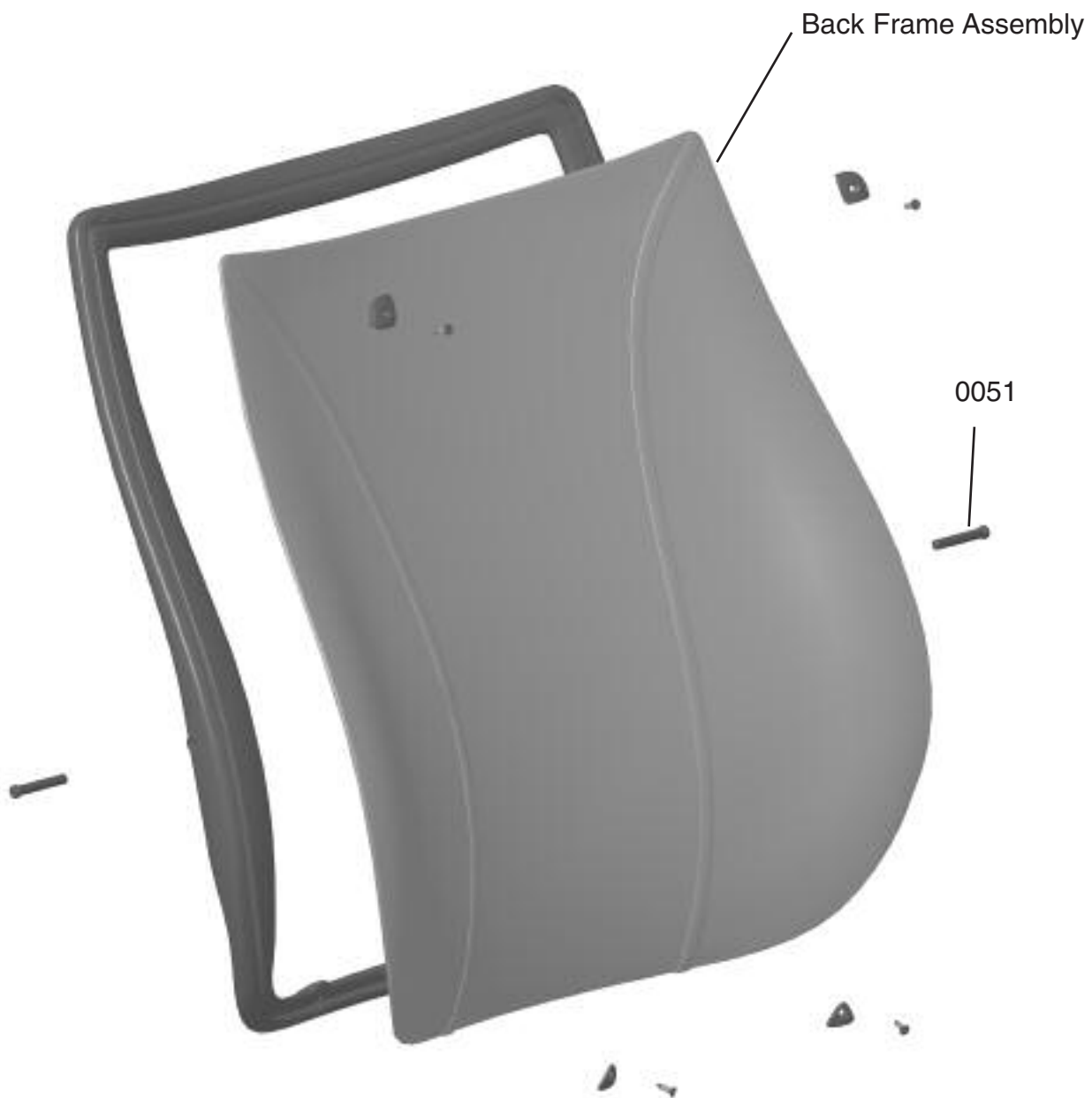
## PARTS

Number	Description	Quantity Per Assembly	Unit Price <sup>†</sup>	Comments
380038 <b>1001</b> BL	Seat Shell Assy, Black	1		
380038 <b>1001</b> SL	Seat Shell Assy, Silver	1		
04 <b>195</b> 10000	Screw, Torx Pan Head, Hi-Lo # 10 x 1/2	5	\$0.30	
<b>LSF 1 2 2 2 *</b>	Seat (Foam) Replacement Cushion			
<b>LSG 1 2 2 2 *</b>	Seat (Gel) Replacement Cushion			

\* 1 – Textile (W,V,X,Z,L,P,U,D,E) 2 – Textile/Mesh Color 3 – Frame Color (B, V, L, A, P) 4 – Mesh (M,C, T) 5 – Arm Pad Color (S, B)  
Refer to Price Guide for all Cushion Pricing.

† Note: All part numbers and prices are for single units only.

## BACKREST ASSEMBLY







## PARTS

Number	Description	Quantity Per Assembly	Unit Price <sup>†</sup>	Comments
380038 <b>0051</b> NL	Pivot Pin, Back Frame	2		
207 <b>10</b> 10000	Assembly Pin	2		
<b>LB 3 4 2 2 *</b>	Replacement Back Assembly			

\* 1 – Textile (W,V,X,Z,L,P,U,D,E) 2 – Textile/Mesh Color 3 – Frame Color (B, V, L, A, P) 4 – Mesh (M,C, T) 5 – Arm Pad Color (S, B)  
 Refer to Price Guide for all Cushion Pricing.

† Note: All part numbers and prices are for single units only.

## ADJUSTABLE ARM ASSEMBLY



## PARTS

Number	Description	Quantity Per Assembly	Unit Price <sup>†</sup>	Comments
380038 <b>0130</b> BL	Adjustable Arm, Right, Black	1		
380038 <b>0162</b> BL	Adjustable Arm, Left, Black	1		
380038 <b>0130</b> SL	Adjustable Arm, Right, Silver	1		
380038 <b>0162</b> SL	Adjustable Arm, Left, Silver	1		
380038 <b>0130</b> AL	Adjustable Arm, Right, Polished w/ Black Trim	1		
380038 <b>0162</b> AL	Adjustable Arm, Left, Polished w/ Black Trim	1		
380038 <b>0130</b> PL	Adjustable Arm, Right, Polished w/ Silver Trim	1		
380038 <b>0162</b> PL	Adjustable Arm, Left, Polished w/ Silver Trim	1		
<b>LGV</b>	Height-Adj. Gel Arm Pads w/ Xanium Cover	1	\$75.00	
<b>LGV 1 2 2 2</b>	Height-Adj. Gel Arm Pads w/ Matching Textile	1		
380038 <b>0155</b> BL	Adjustable Arm, Pivot Cover, Right, Black	1		
380038 <b>0156</b> BL	Adjustable Arm, Pivot Cover, Left, Black	1		
380038 <b>0155</b> SL	Adjustable Arm, Pivot Cover, Right, Silver	1		
380038 <b>0156</b> SL	Adjustable Arm, Pivot Cover, Left, Silver	1		
380038 <b>0160</b> NL	#6x5/8 Phillips Pan Hd. Plastite	4		
380038 <b>0111</b> BL	Adjustable Arm, Lower Cover, Right, Black	1		
380038 <b>0111</b> SL	Adjustable Arm, Lower Cover, Right, Silver	1		
380038 <b>0123</b> BL	Adjustable Arm, Lower Cover, Left, Black	1		
380038 <b>0123</b> SL	Adjustable Arm, Lower Cover, Left, Silver	1		

\* 1 – Textile (W,V,X,Z,L,P,U,D,E) 2 – Textile/Mesh Color 3 – Frame Color (B, V, L, A, P) 4 – Mesh (M,C, T) 5 – Arm Pad Color (S, B)  
Refer to Price Guide for all Cushion Pricing.

† Note: All part numbers and prices are for single units only.

## SIDE CHAIR OVERALL ASSEMBLY



## PARTS

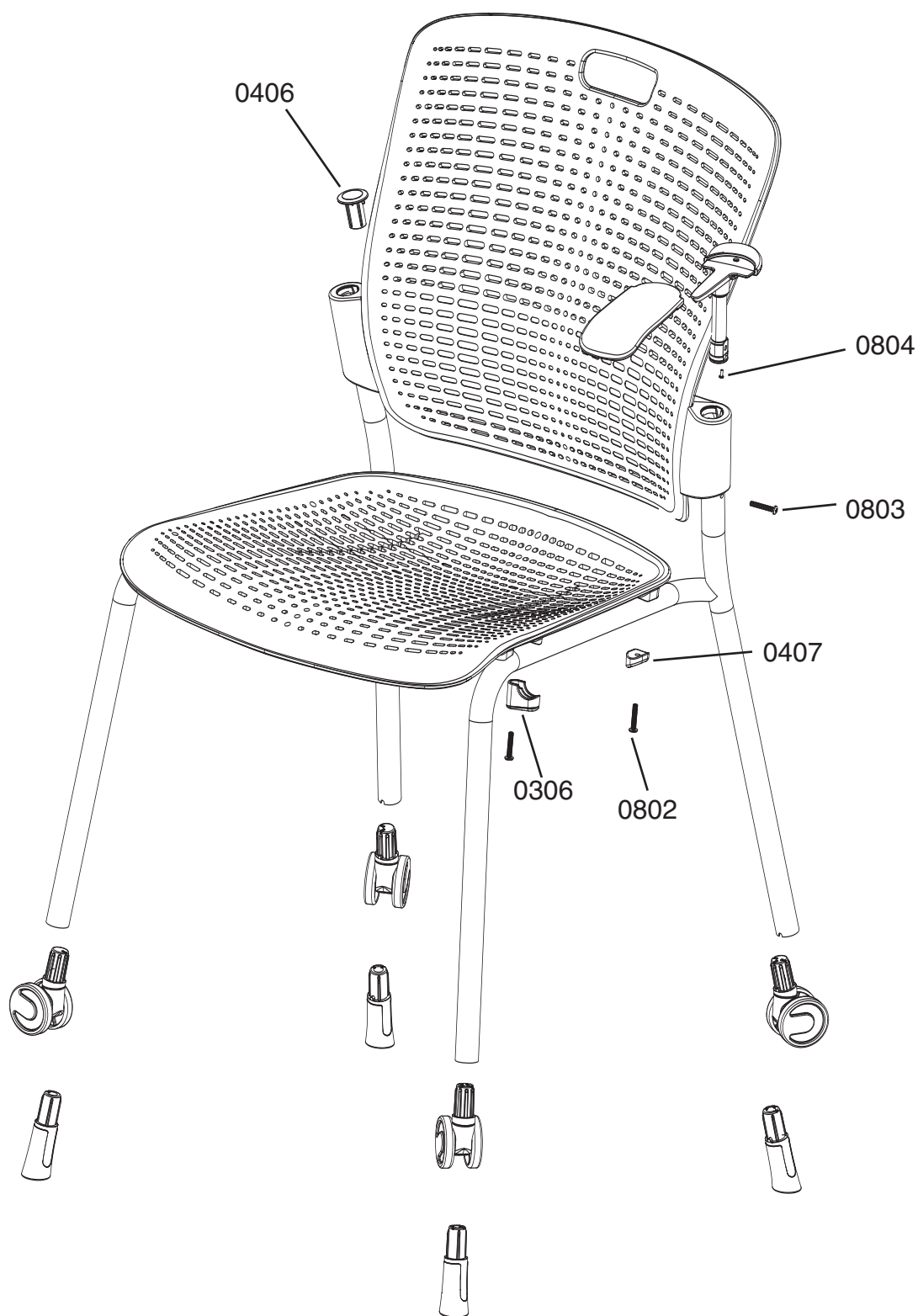
Number	Description	Quantity Per Assembly	Unit Price <sup>†</sup>	Comments
<b>LSCB 3 4 2 2</b>	Mesh Backrest	1		
<b>LSCS 3 4 2 2</b>	Mesh Seat Cushion	1		
380083 <b>0003</b> BL	Front Leg Casting, Black	1		
380083 <b>0003</b> SL	Front Leg Casting, Silver	1		
380083 <b>0003</b> AL	Front Leg Casting, Aluminum	1		
380083 <b>0006</b> BL	Arm Support, Right, Black	1		
380083 <b>0006</b> SL	Arm Support, Right, Silver	1		
380083 <b>0006</b> AL	Arm Support, Right, Aluminum	1		
380083 <b>0007</b> BL	Arm Support, Left, Black	1		
380083 <b>0007</b> SL	Arm Support, Left, Silver	1		
380083 <b>0007</b> AL	Arm Support, Left, Aluminum	1		
<b>LSDA 5</b>	Fixed Duron Arm Pads	1	\$45.00	
<b>LSGA</b>	Fixed Gel Arm Pads, Xanium	1	\$75.00	
380083 <b>0015</b> B	Rear Leg, Right, Black	1		
380083 <b>0015</b> S	Rear Leg, Right, Silver	1		
380083 <b>0015</b> A	Rear Leg, Right, Aluminum	1		
380083 <b>0016</b> B	Rear Leg, Left, Black	1		
380083 <b>0016</b> S	Rear Leg, Left, Silver	1		
380083 <b>0016</b> A	Rear Leg, Left, Aluminum	1		
380038 <b>0033</b> B	Pivot Cover Armless, Right, Black	1		
380038 <b>0033</b> S	Pivot Cover Armless, Right, Silver	1		
380038 <b>0034</b> B	Pivot Cover Armless, Left, Black	1		
380038 <b>0034</b> S	Pivot Cover Armless, Left, Silver	1		
380038 <b>0032</b> B	Pivot Cover, Right, Black	1		
380038 <b>0032</b> S	Pivot Cover, Right, Silver	1		
380038 <b>0031</b> B	Pivot Cover, Left, Black	1		
380038 <b>0031</b> S	Pivot Cover, Left, Silver	1		
380083 <b>0065</b> N	M6 x 25mm Socket Low Head Screw	8		
380083 <b>0061</b> N	#12 x 1 Torx Pan Head Plastite Screw	2		
380038 <b>0060</b> N	1/4-20x5/8 Socket Pan Hd. Mach Screw	4		
380038 <b>0160</b> N	#6x5/8 Phillips Pan Head Plastite Screw	8		
380038 <b>0029</b> N	Back Torsion Spring	2		
380038 <b>0051</b> N	Back Pivot Pin	2		
380038 <b>1000</b> N	Foam Pads	6		
380038 <b>0015</b> N	0.5 x 3 x 0.015 Double. Kote Black Tape	2		
380038 <b>0014</b> B	Upholstery Button Screws, Black	4		
380038 <b>0014</b> S	Upholstery Button Screws, Silver	4		

\*\*\* Important Engineering change!!!!!! All chairs that were produced before January 20th 2008 must be completely replaced if the seat mesh fails. This is due to an engineering change with the legs and seat frame. The new parts are NOT compatible with the old parts. \*\*\*

\* 1 – Textile (W,V,X,Z,L,P,U,D,E) 2 – Textile/Mesh Color 3 – Frame Color (B, V, L, A, P) 4 – Mesh (M,C, T) 5 – Arm Pad Color (S, B)  
Refer to Price Guide for all Cushion Pricing.

† Note: All part numbers and prices are for single units only.

# CONTENTS



*cinto*™



## PARTS

Number	Description	Quantity Per Assembly	Unit Price <sup>1</sup>	Comments
<b>CRS 1 1</b>	Seat	1		
<b>CRS 1 1 C</b>	CAL Seat	1		
<b>CRB 1 1</b>	Back	1		
<b>CRB 1 1 C</b>	CAL Back	1		
<b>CRCAST</b>	Set of Casters	1		
<b>CRGLIDE 2</b>	Set of Glides	1		
<b>CRA 3</b>	Set of Arm Sleeves	1		
380539 <b>0001</b> BL	Arm, Left, Black	1		
380539 <b>0001</b> SL	Arm, Left, Silver	1		
380539 <b>0002</b> BL	Arm, Right, Black	1		
380539 <b>0002</b> SL	Arm, Right, Silver	1		
380539 <b>0306</b> BL	Front Boss Cap, Black	2		
380539 <b>0306</b> SL	Front Boss Cap, Silver	2		
380539 <b>0406</b> BL	Belt Cap, Black	2		
380539 <b>0406</b> SL	Belt Cap, Silver	2		
380539 <b>0407</b> BL	Frame Bumper, Rear, Black	2		
380539 <b>0407</b> SL	Frame Bumper, Rear, Silver	2		
380539 <b>0408</b> BL	Glide, Front Right, Black	1		
380539 <b>0408</b> SL	Glide, Front Right, Silver	1		
380539 <b>0409</b> BL	Glide, Front Left, Black	1		
380539 <b>0409</b> SL	Glide, Front Left, Silver	1		
380539 <b>0410</b> BL	Glide, Back Right, Black	1		
380539 <b>0410</b> SL	Glide, Back Right, Silver	1		
380539 <b>0411</b> BL	Glide, Back Left, Black	1		
380539 <b>0411</b> SL	Glide, Back Left, Silver	1		
380539 <b>0802</b> NL	Seat Screw, 1" Thread Forming	4		
380539 <b>0803</b> BL	Armrest Screw, Black	2		
380539 <b>0803</b> SL	Armrest Screw, Silver	2		
380539 <b>0804</b> BL	Armrest Screw, 4-40x.25 Pan Head, Black	2		
380539 <b>0804</b> SL	Armrest Screw, 4-40x.25 Pan Head, Silver	2		
380539 <b>1000</b> BL	Standard Frame, Black	1		
380539 <b>1000</b> SL	Standard Frame, Silver	1		
380539 <b>1001</b> BL	Sled Frame, Black	1		
380539 <b>1001</b> SL	Sled Frame, Silver	1		
380539 <b>1002</b> BL	Caster, Front Right	1		
380539 <b>1003</b> BL	Caster, Front Left	1		
380539 <b>1004</b> BL	Caster, Back Right	1		
380539 <b>1005</b> BL	Caster, Back Left	1		

\* 1 – Backrest, Seat Pan Color 2 – Frame Color (S = Silver, B = Black) 3 – Trim Color (G = Gray, B = Black)  
Refer to Price Guide for all Cushion Pricing.

† Note: All part numbers and prices are for single units only.