

# Porcelain Stone Rainscreens

**CLADDING CORP**



**MIRAGE**  
close to your inspiration



# Who is Mirage?

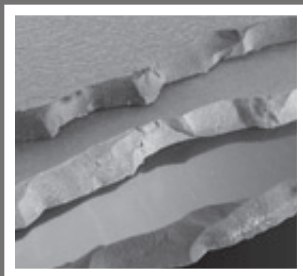
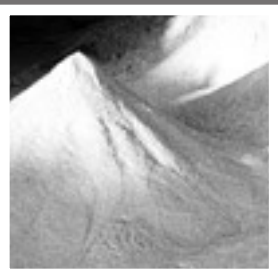
Mirage Granito Ceramico is an innovative material that combines the quality and practicality of industrial porcelain ceramics with the beauty and charm of natural stone. With its headquarters located in the heart of Italy's ceramic region, Mirage is a market leader among large format ceramic manufacturers. Mirage has initiated the evolution of porcelain stoneware to the world of natural stone.

Mirage porcelain panels are full-body veined, like natural stone slabs and are comparable for aesthetics, sizes and colors. They are also lighter than natural stone and easier to install.

Without imitation, Granito Ceramico originates from a research for a balance of colors and harmony of veining, without attempting to photocopy quarried marble or granite-but interpreting its natural beauty with a modern ecological twist (Ecolabel Certification).

As in nature, the veining pattern is always random but without the excessive variations typical of most quarried stone. This balance of colors and veining allows many product ranges to be easily combined to achieve a variety of design possibilities.

With over fifteen years experience in ventilated facades, Mirage has proven the reliability of its porcelain ceramic panels with over three million square meters (30 million square feet) of installed facades throughout the world.



## Mirage & Rainscreen

Given the unique properties of Mirage's porcelain grade ceramics, Mirage facades are the ideal complement for an energy efficient rainscreen design. Made of natural raw materials, Mirage panels are ideal for pollution prone environments and require less maintenance than natural stone panels. Mirage is focused on the 'cradle-to-grave' lifecycle considerations of its products and has earned the EU Ecolabel certification for all of its product collections.



# Why Mirage Rainscreen?

- Full-Bodied Color - surface color and veining are through-body
- Natural Raw Material Ingredients
- Non-Combustible
- Impact Resistant
- Unalterable Colors - range of colors unaffected by light and weathering
- Maintenance-Free - no need for periodic maintenance, special coatings or sealants
- Pollutant Resistant - ideal for high-traffic, pollution-prone environments
- Light-weight - provides a cost savings for both material and substructure
- Workable - easily be fabricated in the field
- Ecological - panels contain no waterproofing chemicals, varnishes or resins



## Sizes



Unlike traditional ceramic or porcelain stoneware, usually produced in the form of thin tiles, Granito Ceramico is a three-dimensional material available in a variety of thicknesses—from .39" (1cm) to 1.18" (3cm).

With certain product ranges, Granito Ceramico is also available in the form of large slabs, 49" x 70" x 1.18" (125cm x 178cm x 3cm) that can be shaped and machined to size, just like marble and granite.

### STANDARD SIZES:

11.81" x 23.62	(30cm x 60cm)
23.62" x 23.62"	(60cm x 60cm)
23.62" x 47.24"	(60cm x 120cm)

# Industrial Series

Beyond the boundaries of natural stone...



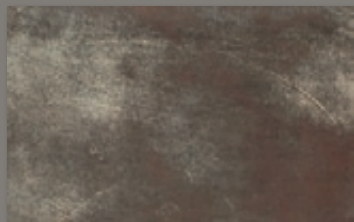
## WORKSHOP COLLECTION

With the stunning Workshop collection, Mirage moves beyond the boundaries of natural stone through its NEW metallic inspired line. These full-body colors serve as a creative reinterpretation of the patinas of metal and the textures of stucco.

Sizes: 11.81" x 23.62" (30x60cm), 23.62" x 23.62" (60x60cm), 23.62" x 47.24" (60x120cm)



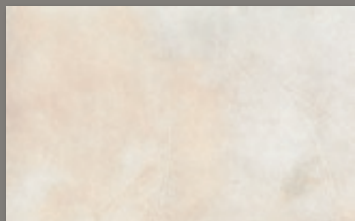
WS 01 / SILVER



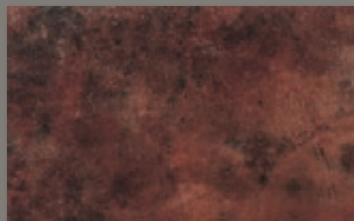
WS 02 / COPPER



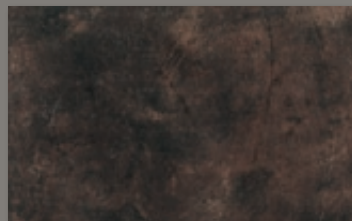
WS 03 / BRONZE



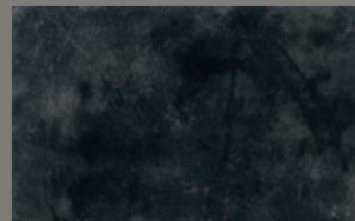
WS 04 / ALMOND



WS 05 / CLAY



WS 06 / COFFEE

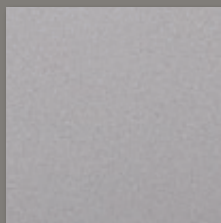


WS 07 / COLE

## CEMENTI COLLECTION

The Cementi collection serves as an intelligent reinterpretation of common 'cement' in a refined, modern pallet of colors.

SIZES: 17.72" x 17.72" (45x45cm), 23.62" x 23.62" (60x60cm), 23.62" x 47.24" (60x120cm)



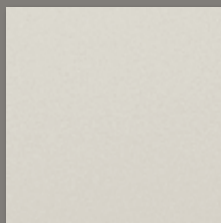
CM 01 / SILVER



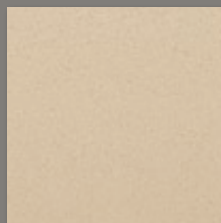
CM 02 / DIMGREY



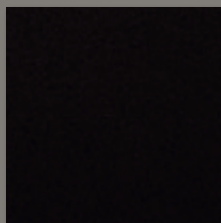
CM 03 / LEATHER



CM 07 / MOON



CM 08 / SAND



CM 09 / MINE

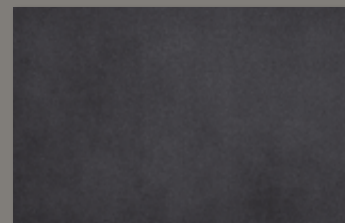
## AREA COLLECTION

Area meets the needs of modern design, with smart, innovative and versatile colors and outstanding technical performance.

SIZES: 11.81" x 23.62" (30x60cm), 23.62" x 23.62" (60x60cm), 23.62" x 47.24" (60x120cm)



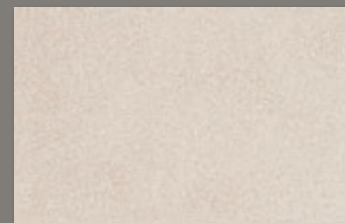
AR 02 / SERENA



AR 03 / LAVICA



AR 04 / ETRUSCA \*



AR 05 / IMPERIALE

\*AR 04 not available in 23.62" x 47.24" (60x120cm)

**CLADDING CORP**



# Design Series

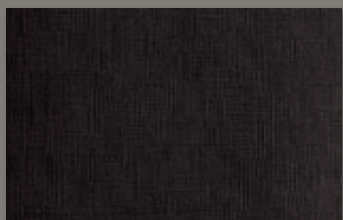
Modern beauty, enduring aesthetics...



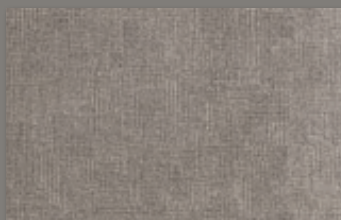
## CHIC COLLECTION

Chic has an extraordinarily modern beauty with patterned surfaces with a metallic hint.

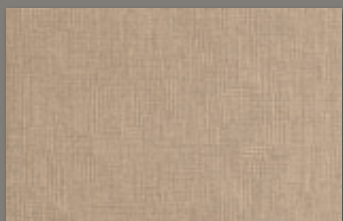
Sizes: 11.81" x 23.62" (30x60cm), 23.62" x 23.62" (60x60cm), 23.62" x 47.24" (60x120cm)



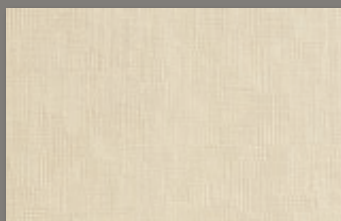
CH 01 / CAVIAR



CH 02 / OYSTER



CH 03 / VANILLA

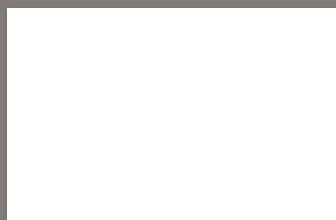


CH 04 / CHAMPAGNE

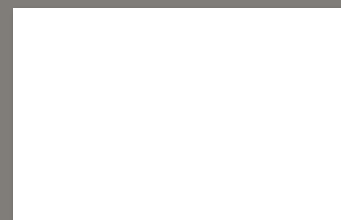
## BLACK & WHITE COLLECTION

The Black & White collection highlights the stark and timeless visual impact of the whitest white and the blackest black.

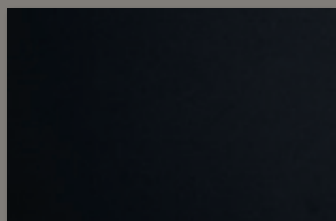
Sizes: 11.81" x 23.62" (30x60cm), 23.62" x 23.62" (60x60cm), 23.62" x 47.24" (60x120cm)



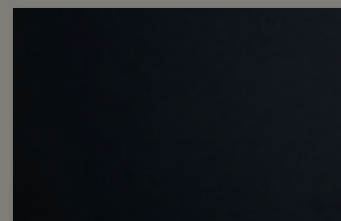
TK 200 / EXTRA BIANCO



TK 200 / EXTRA BIANCO POLISHED



TK 201 / SUPER BLACK

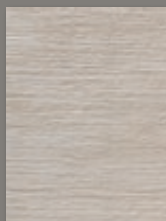


TK 201 / SUPER BLACK POLISHED

## ESSENCE COLLECTION

The Essence collection represents a new direction in porcelain ceramics with its highly textured finish and warm, comprehensive color pallet.

Sizes: 11.81" x 23.62" (30x60cm), 23.62" x 23.62" (60x60cm)



NR 01 / MIRRA



NR 02 / COLONIALE



NR 03 / NOCCIOLA



NR 04 / TERRA



NR 05 / ARGILLA



NR 06 / MUSCHIO

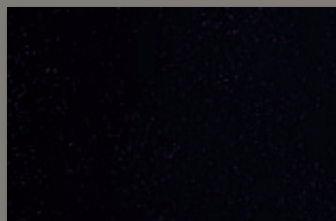


NR 07 / INCENSO

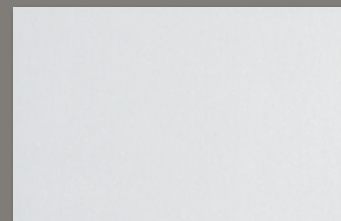
## FREESTYLE COLLECTION

Large, single-color surfaces with sophisticated charming effects.

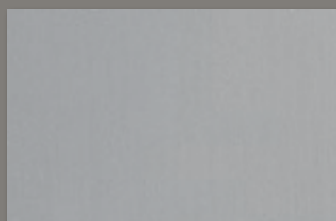
Sizes: 11.81" x 23.62" (30x60cm), 23.62" x 23.62" (60x60cm), 35.43" x 35.43" (90x90cm)



FS 05 / BLACK JADE



FS 06 / WHITE JADE



FS 07 / GREY JADE

# Stone Series

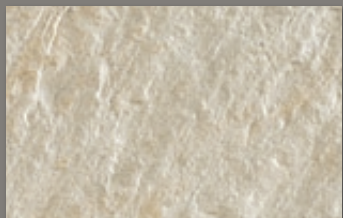
Timeless aesthetic of natural stone at a fraction of the cost...



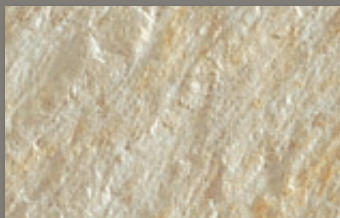
## QUARZITI COLLECTION

The Quarziti collection was inspired by the need for a tile with a structured texture to resemble the essence of natural stone.

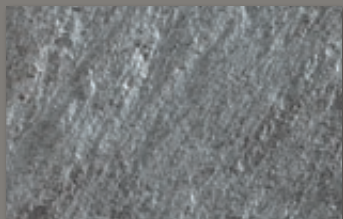
SIZES: 11.81" x 23.62" (30x60cm), 23.62" x 23.62" (60x60cm)



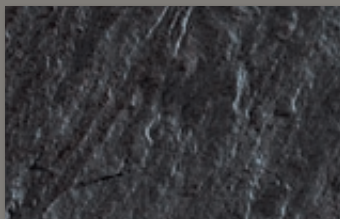
QZ 01 / PEARL WHITE



QZ 02 / TARMAC



QZ 03 / CASTLEWALL

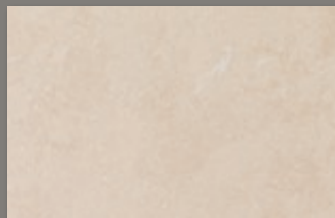


QZ 04 / DARKQUARTZ

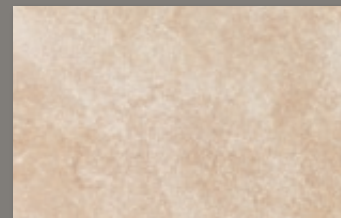
## PETRANOVA COLLECTION

The creation of the Petranova collection was inspired by the warm, earthy and rustic surfaces of terra cotta and sandstone.

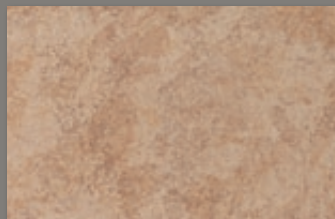
SIZES: 11.81" x 23.62" (30x60cm), 23.62" x 23.62" (60x60cm)



PN 50 / CREMO



PN 51 / CLASSICO



PN 52 / LAVENDER

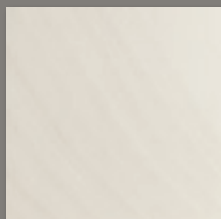


PN 53 / MOKA

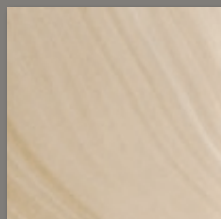
## LIMESTONE COLLECTION

The beauty of limestone is carefully achieved with taste and delicacy, using essential colors and natural shades. Available in a natural and polished finish.

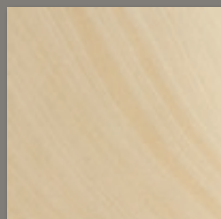
SIZES: 11.81" x 23.62" (30x60cm), 23.62" x 23.62" (60x60cm)



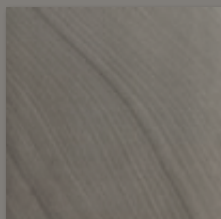
LM 01 / LIME\_WHITE



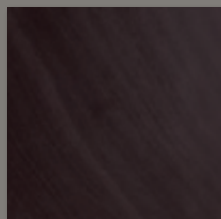
LM 02 / LIME\_CREAM



LM 03 / LIME\_KAKI



LM 04 / LIME\_GREY

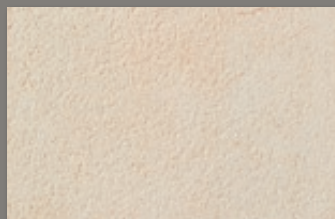


LM 05 / LIME\_BLACK

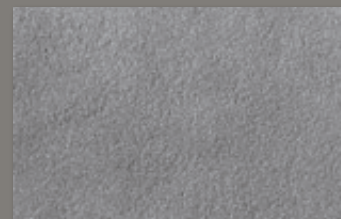
## PIETRE COLLECTION

The Pietre collection serves to provide warm and rustic surfaces that appear reminiscent of terra cotta and sandstone.

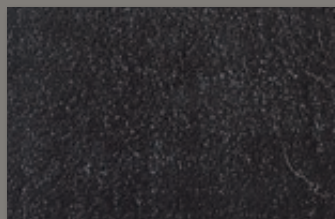
SIZES: 11.81" x 23.62" (30x60cm), 23.62" x 23.62" (60x60cm), 23.62" x 47.24" (60x120cm)



PR 01 / ILANG



PR 02 / TATAMI

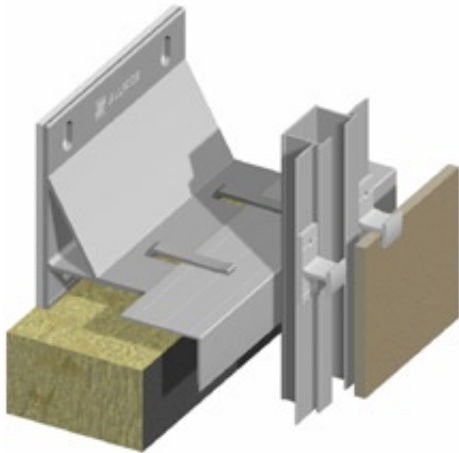


PR 03 / KOMBU

**CLADDING CORP**



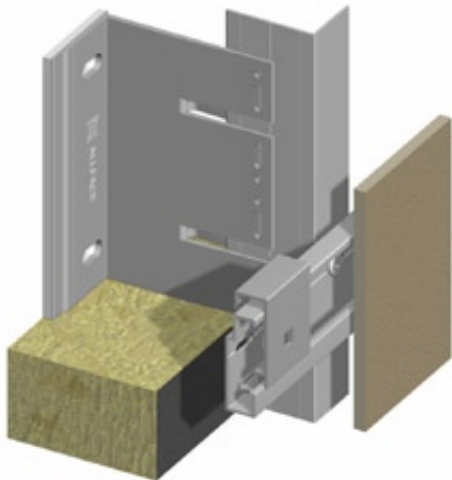
# Attachment Systems



## F2.20 SYSTEM

### VISIBLE ATTACHMENT CLIPS

The system is a visible clip attachment system designed specifically for Mirage panels with color coated clips that attach back to a vertical Hat-Profile. This is the most cost effective attachment approach.



## F1.40 SYSTEM

### CONCEALED ATTACHMENT UNDERCUT ANCHOR

The Keil undercut anchor enables the rear attachment of Mirage panels to the suspended, rear-ventilated façade. A hole is drilled into the rear of the panel, which is undercut and expanded in the drill hole base. The panels then hang on a horizontal profile rail.



ALLFACE seeks to simplify the complexity of facade design and provide economical, technically efficient and intuitive fixing solutions for Mirage rainscreen cladding applications. Partnering with Cladding Corp in North America, the ALLFACE fixing solutions offer designers and contractors alike “project specific” support to facilitate modern architectural design with advanced engineered attachment solutions.



## About Us

Cladding Corp serves as North America's rainscreen solution provider. Our goal is to deliver the most innovative, sustainable and affordable European cladding materials to North America through our 'systems approach' to rainscreen cladding. We offer project-specific, fully-engineered attachment solutions that simplify the complexity of rainscreen design. This, coupled with our diverse portfolio of rainscreen façade products, enables us to provide you with one-stop-shopping for all your cladding needs.

WASHINGTON, DC  
MIAMI, FL  
SAN DIEGO, CA  
WICHITA, KS

**888.826.8453**

[info@claddingcorp.com](mailto:info@claddingcorp.com)  
[www.claddingcorp.com](http://www.claddingcorp.com)

**CLADDING CORP**

innovative rainscreen solutions

