



Cube

BC 02

inch 72x36x24 mm 1829x914x610

■ **interior dimensions**

rim: inch 58x26 mm 1473x660
base: inch 48x25 mm 1219x635
height: inch 20 mm 508

■ **capacity to overflow**

gal (us) - 82 liters - 310

■ **weight**

lb - 286 kg - 130

■ **installation**

1 wall, 2 walls or 3 walls

■ **accessory**

dark brown bridge

■ **material**

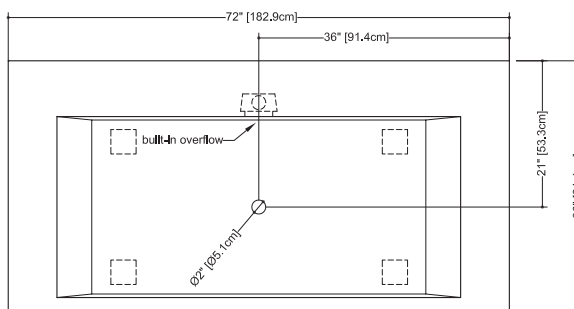
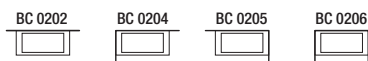
WETMAR™, glossy or mat finish

■ **color**

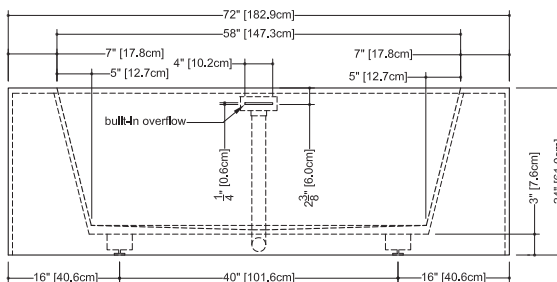
white

■ **codes/standards applicable**

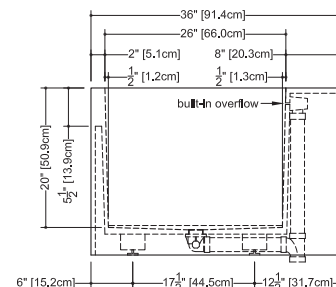
IAPMO-ANSI Z124.1 - IAPMO-ANSI Z124.3
CSA B 45.0 - CSA B45.4



plan view



front view



side view

WETSTYLE cannot be held responsible for any technical errors and reserves the right to make revisions without notice.

Approximate measurement.
The manufacturer accept 1/4" (6.35mm) variance.

www.WETSTYLE.CA - Montreal - Canada
Tel. 450.536.9000 - 1 888.536.9001 - Fax. 450.536.0202





Cube

BC 02

inch 72x36x24 mm 1829x914x610

■ **overflow**
slot design
polished chrome or brushed nickel

■ **drain**
soft toe touch
polished chrome or brushed nickel

■ **waste and overflow kit**
included

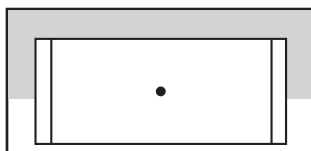
■ **faucet area recommended**
bath deck
or floor-mounted

■ **trap access**
white access panel

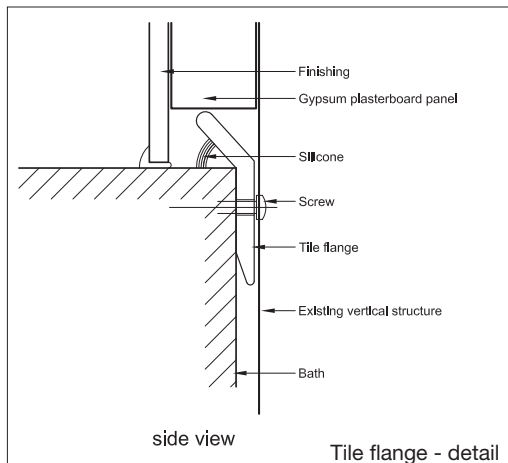
■ **option :**
overflow & drain
35" longneck waste and
overflow from Geberit

wide-deck bathtub;
wall shower installation
is not recommended

* Due to multiple possibilities,
faucet holes must be drilled by the plumber.



■ Faucet installation zone



Bathtub installation supplies

A tile flange will be supplied to comply with the requested position. Installed at the factory to prevent water leakage, this must be placed directly on the partition framing prior to the installation of drywall.

WETSTYLE cannot be held responsible for any technical errors and reserves the right to make revisions without notice.

Approximate measurement.
The manufacturer accepts 1/4" (6.35mm) variance.

www.WETSTYLE.CA - Montreal - Canada
Tel. 450.536.9000 - 1 888.536.9001 - Fax. 450.536.0202

