

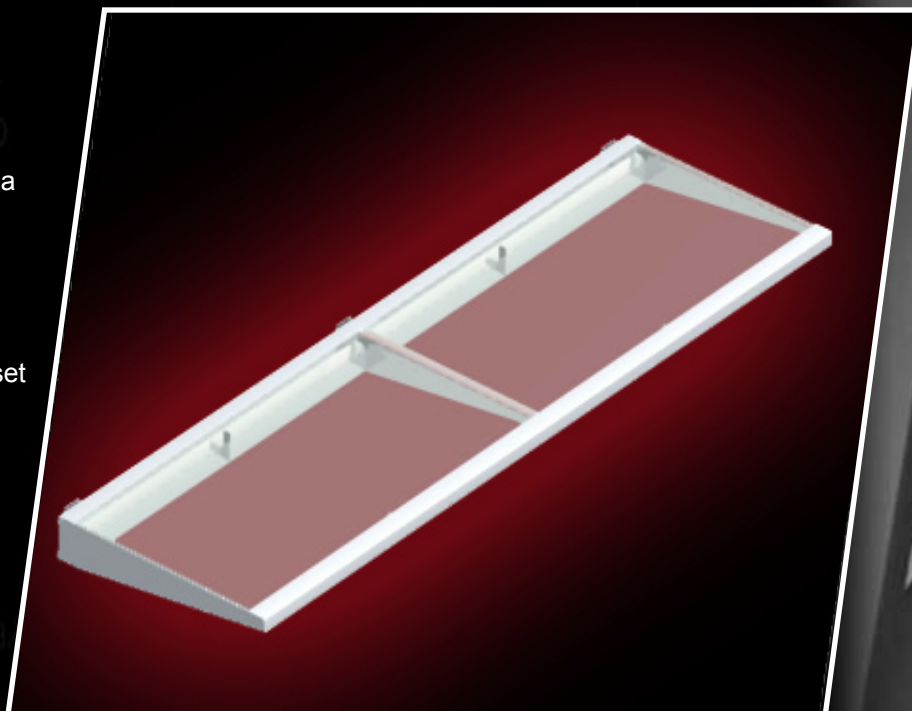


Mesa Series

Mesa 4500

Employing a strong steel frame, the Mesa 4500 can be mounted a variety of ways such as to slotted uprights, slat wall, or directly to the wall.

Using efficient ballast and T2 lamps, this sleek design will illuminate any product set upon it.



Specifications:

Construction: Steel with Glass Shelf
Mounting: Wall, Slatwall, Slotted Uprights
Power Input: 120 V AC 50/60 HZ
Max Current: 1.10 AMPS
Lamps: (4) T2 13W Lamps
Finish: Powder coated; Black, Silver, White
Weight: 15 lbs
Length: 46 in
Max Shelf Load: 35 lbs



Product Number
M2041

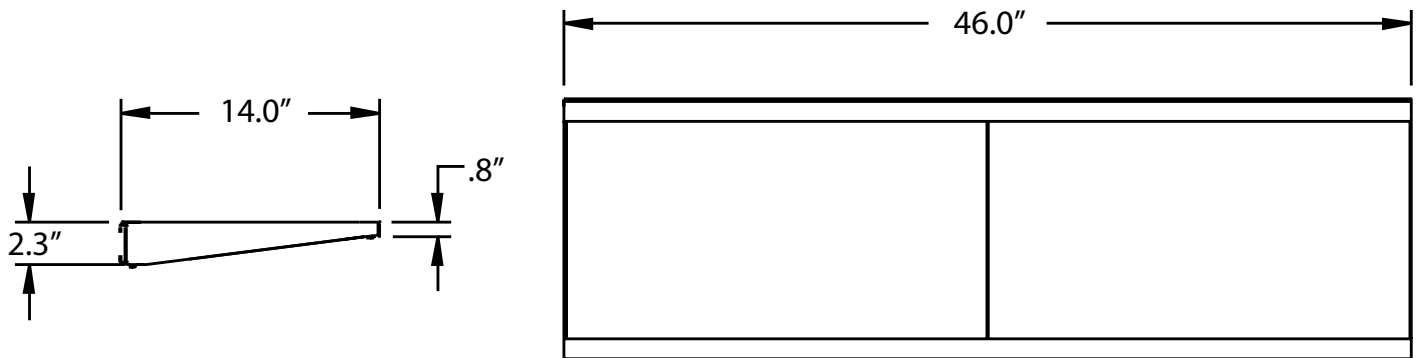
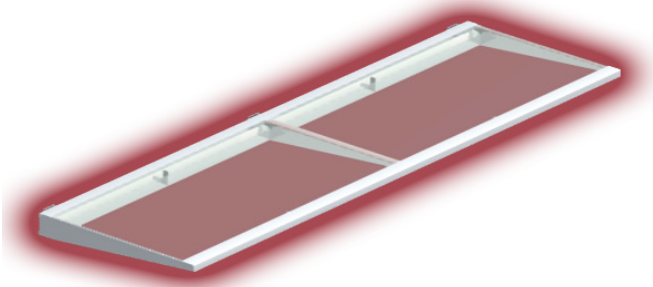
Mesa Series
Mesa 4500

APPLICATION

Using efficient ballast and T2 lamps, this sleek design will illuminate any product set upon it.

PRODUCT SPECIFICATION DATA:

Steel Construction with Glass Shelf
Energy saving T2 Lamps
Powder coated finish
Wall, Slatwall, Slotted Standard Mount
Electronic Ballast 120 V
35 lbs Max Shelf Load
Tested to UL Standards #1598



Sample Part Number

M2041 - 4 - 13WT2K65 - 120 - M1 - D
Model Size Lamping Voltage Mounting Color

Your Part Number

M2041-4-13WT2K65-120- ____ - ____

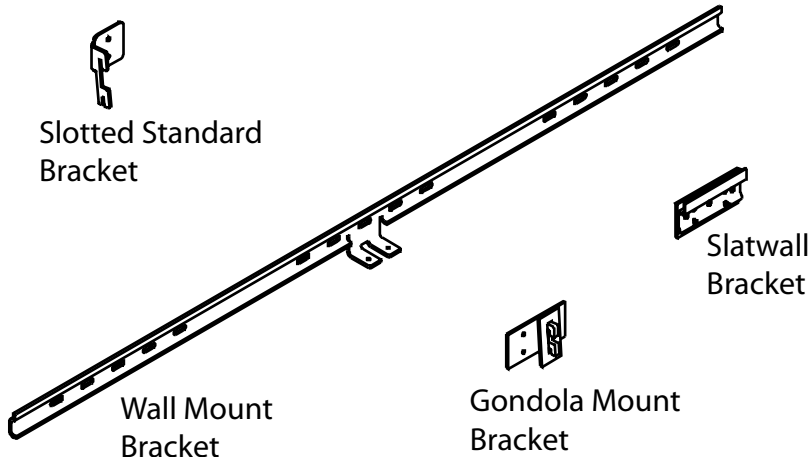
Mounting

- M1 - Wall
- M2 - Slatwall
- M3 - Slotted Standard
- M4 - Gondola

Color

- D - White
- E - Silver
- F - Black
- X - Custom

Mounting Options



Mesa 4500 mounts directly to the wall, or with brackets mounts to slatwall, and slotted standards. All wiring connections to be installed by certified electricians according to local codes.

High Power Factor Electronic ballast standard.

LABELS - All fixtures are tested to the appropriate UL Standards by Electrical Testing Laboratory. The labels are affixed to the fixture indicating the test number and standards used.

