

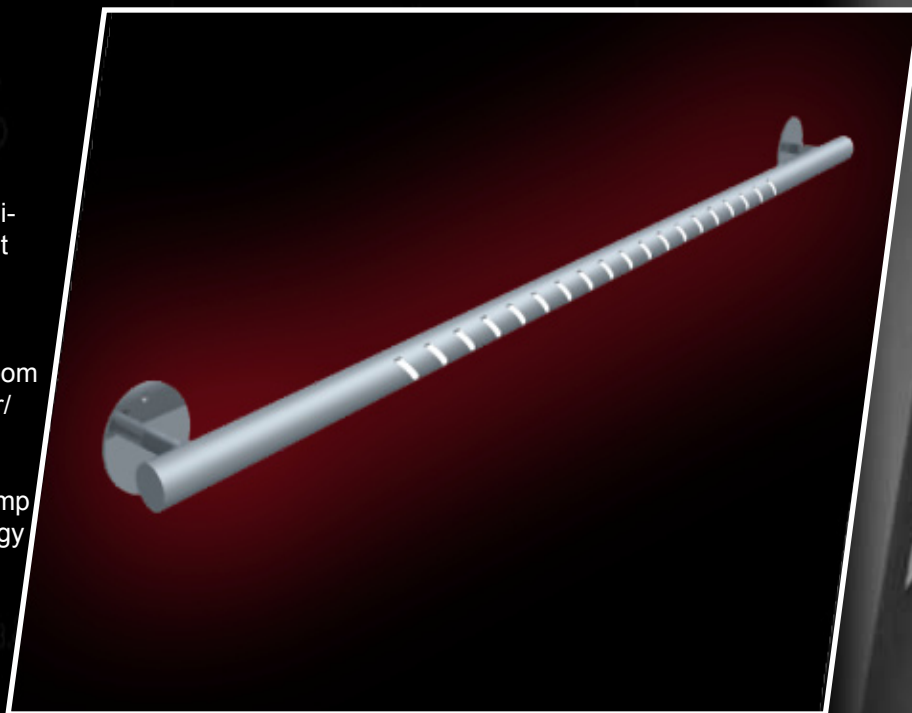
Pillar Series

Pillar ProSE

The Pillar ProSE is an innovative fixture designed for menu or museum type applications but can be used in any room as it adds to the décor.

The light is protruded in a linear fashion making it illuminate and exhilarate the room by displaying an edgy and versatile color/ design.

The efficient electronic ballast and T5 lamp make each fixture contribute to low energy consumption.



Specifications:

Construction: Aluminum
Mounting: Wall Mount
Power Input: 120 V AC 50/60 HZ
Max Current: .55 AMPS
Lamp: (1) T5 28W Lamp
Finish: Powder coated; Black, Silver, White.
Length: 5 1/2 ft
Weight: 8 lbs



Product Number
M2054

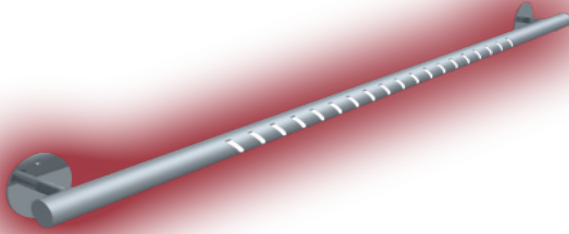
Pillar Series
Pillar ProSE

APPLICATION

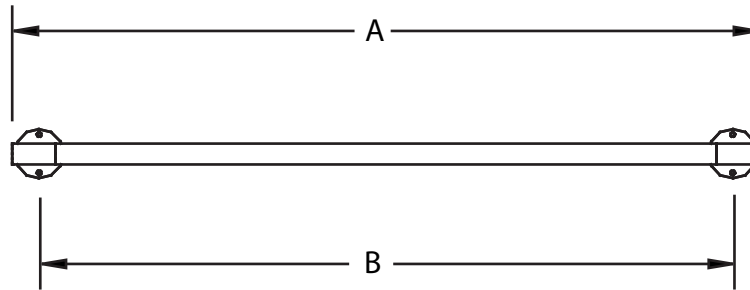
The Pillar ProSE is an innovative fixture designed for menu or museum type applications but can be used in any room as it adds to the décor.

PRODUCT SPECIFICATION DATA:

Aluminum Construction
Energy saving T5 Lamps, Standard or High Output
Powder coated finish
Wall Mount
Electronic Ballast 120/277V
Tested to UL Standards #1598



Lamp	A	B
Std	68.0"	63.5"
HO	74.5"	69.7"



Sample Part Number
M2054 - 4 - 28WT5K65 - SL3 - 120 - D
Model Size Lamping Standoff Voltage Color

Your Part Number
M2054-4- _____ - _____ - _____ - _____

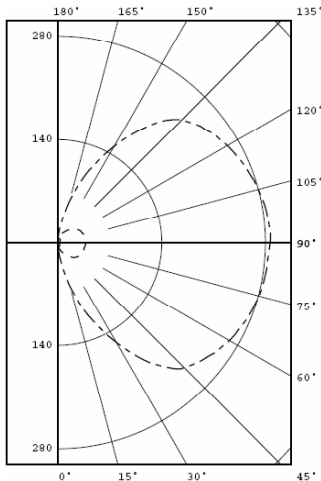
- Standoff
- SL1 - 4"
 - SL2 - 8"
 - SL3 - 12"

- Lamping
- 28WT5K65 - 4' Standard
 - 54WT5K65 - 4' HO

- Voltage
- 120 Volt
 - 277 Volt

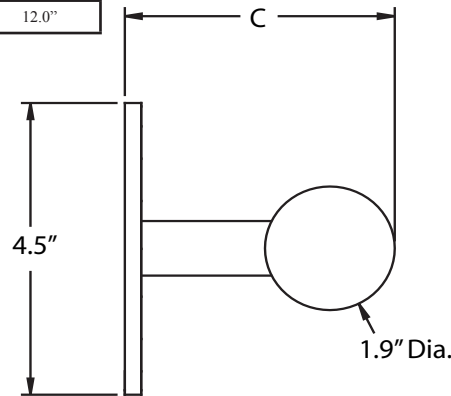
- Color
- D - White
 - E - Silver
 - F - Black
 - X - Custom

Pillar ProSE, 68.0" Long (1) 28W T5
Total Luminaire Efficiency 83.8%



IES File Available on Website

Size	C
SL1	4.0"
SL2	8.0"
SL3	12.0"



Pillar mounts to Junction box (by others) all junction boxes require suitable structural support mechanism such as blocking.

High Power Factor Electronic ballast standard.

LABELS - All fixtures are tested to the appropriate UL Standards by Electrical Testing Laboratory. The labels are affixed to the fixture indicating the test number and standards used.

