



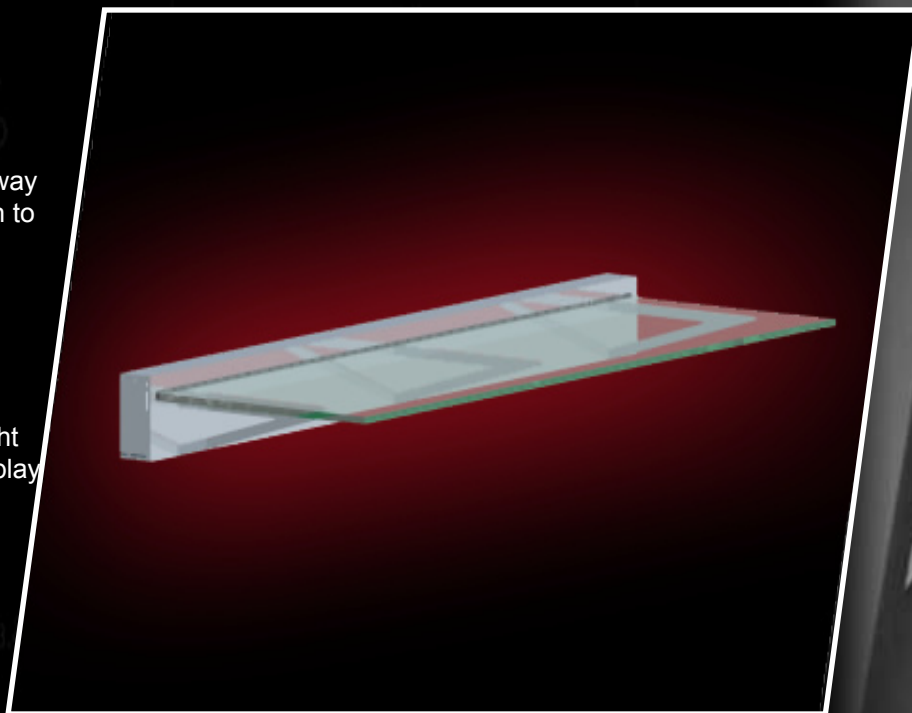
Mesa Series

Mesa 2200

The Mesa 2200 has revolutionized the way light is distributed by its unique approach to display lighting.

This clean cut design will enhance any architectural environment as well as the products you wish to display.

This easy to mount shelf has a lightweight look that projects light to the desired display items.



Specifications:

Construction: Aluminum with Glass Shelf
Mounting: Wall Mount
Power Input: 120 V AC 50/60 HZ
Max Current: .55 AMPS
Lamp: (1) T2 13W Lamp
Finish: Powder coated; Black, Silver, White
Weight: 5lbs
Length: 23 in
Max Shelf Load: 10lbs



Product Number
M2043

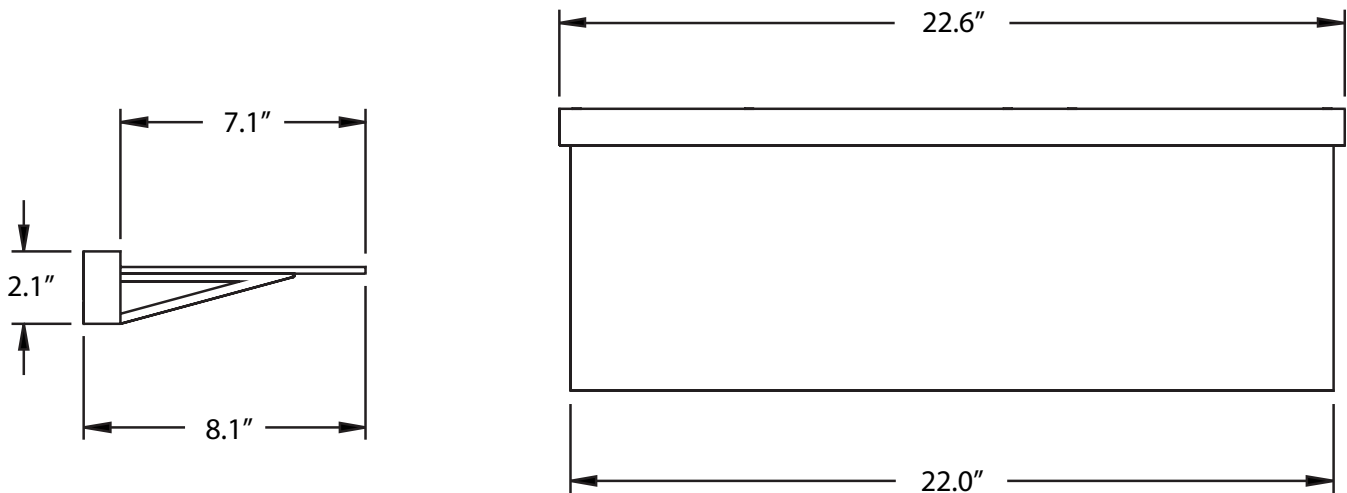
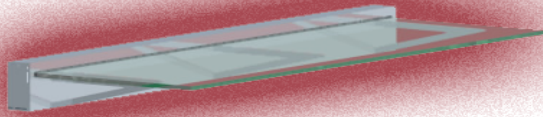
Mesa Series
Mesa 2200

APPLICATION

This easy to mount shelf has a lightweight look that projects light to the desired display items.

PRODUCT SPECIFICATION DATA:

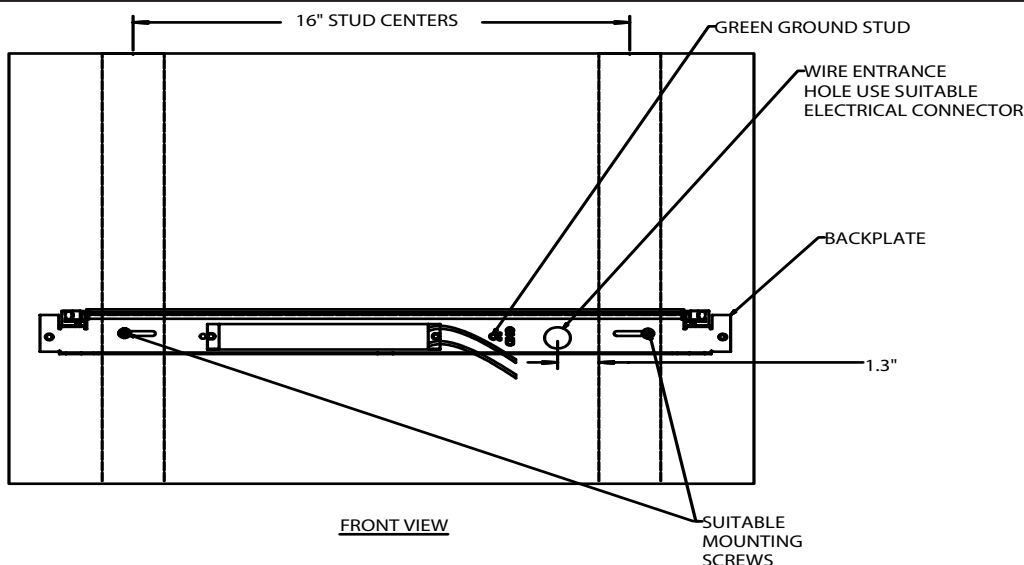
Aluminum Construction with Glass Shelf
Energy saving T2 Lamp
Powder coated finish
Wall Mount
Electronic Ballast 120
10 lbs Max Shelf Load
Tested to UL Standards #1598



Sample Part Number
M2043 - 2 - 13WT2K65 - 120 - D
Model Size Lamping Voltage Color

Your Part Number
M2043 -2-13WT2K65-120-___

- Color
- D - White
 - E - Silver
 - F - Black
 - X - Custom



Mesa 2200 mounts directly to the wall, all wiring connections to be installed by certified electricians according to local codes.

High Power Factor Electronic ballast standard.

LABELS - All fixtures are tested to the appropriate UL Standards by Electrical Testing Laboratory. The labels are affixed to the fixture indicating the test number and standards used.

