

## Serengeti Compact Fluorescent Sconce

700TDSRNS\_-CF

1.3



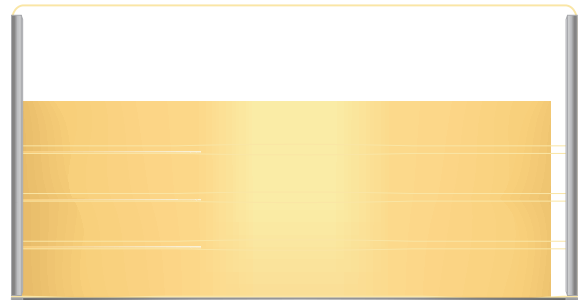
## SCONCES

## GENERAL PRODUCT INFORMATION:



This product can mount to either a 4" square electrical box with round plaster ring or an octagon electrical box.

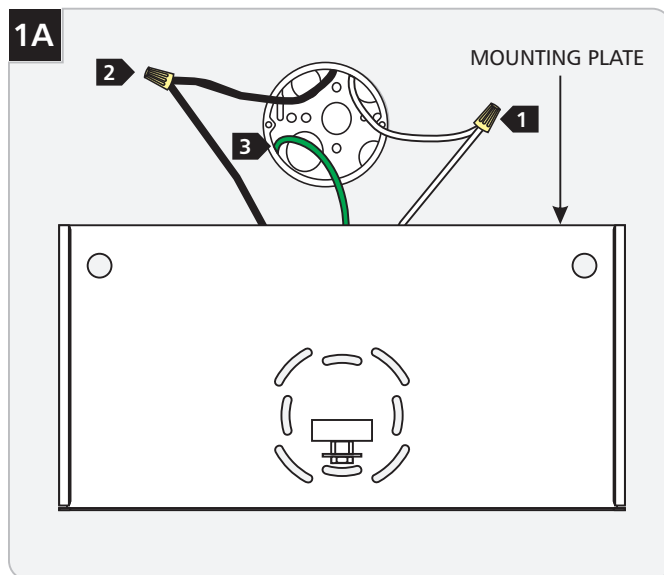
This product is suitable for damp locations.



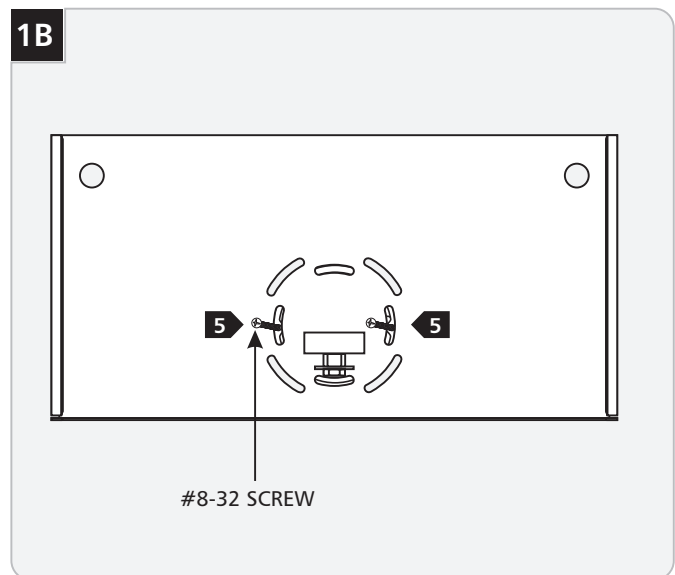
## CAUTION—RISK OF FIRE

This product requires installation by a qualified electrician. Before installing be sure to read all instructions and **TURN THE POWER TO THE ELECTRICAL BOX OFF.**

## Install the Sconce

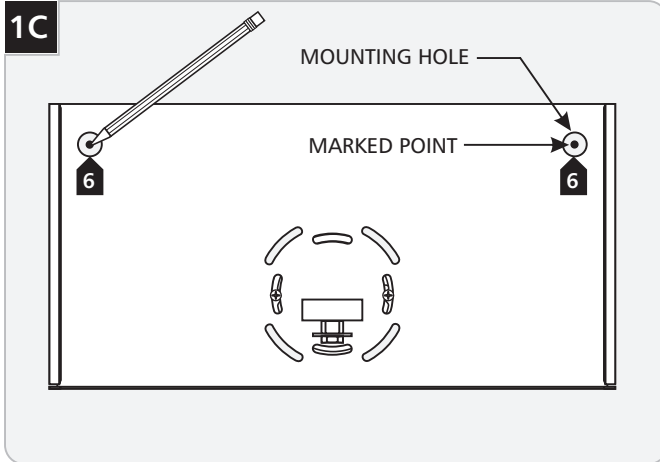


- 1** Connect the white fixture wire to the neutral power line wire with a wire nut.
- 2** Connect the black fixture wire to the hot power line wire with a wire nut.
- 3** Make sure mounting plate is grounded in accordance with local electrical codes.

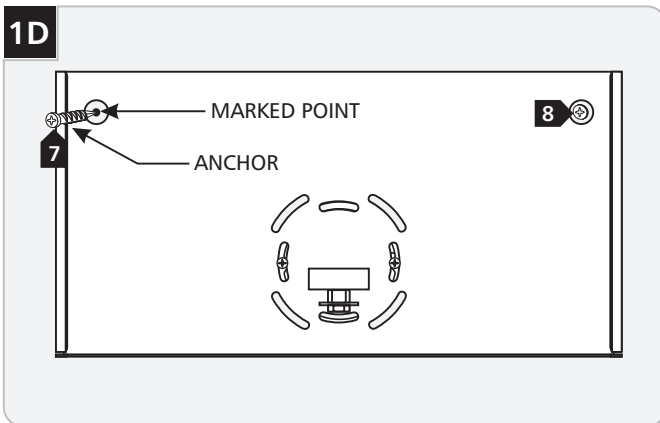


- 4** Place all wire and wire nut connections inside the electrical box.
- 5** Line up two mounting plate slots with the two electrical box holes. Level the mounting plate horizontally and secure it to the electrical box with the two provided #8-32 screws.

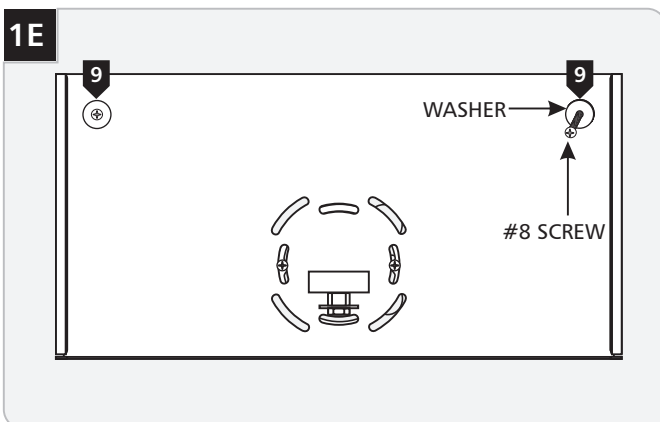
## Install the Lamp & Shade



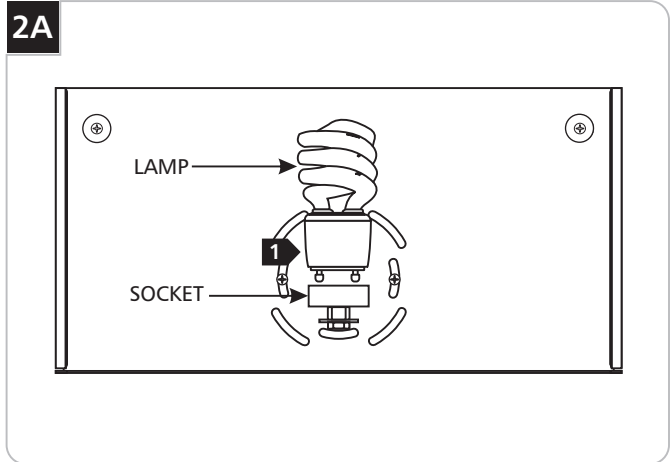
- 6** Mark two points onto the wall through the mounting holes.



- 7** With a hammer tap the anchors at the marked points up to the threaded portion.
- 8** Screw the anchors in the rest of the way with a Phillips screwdriver.



- 9** Secure the mounting plate to the anchors with provided #8 screws and washers.

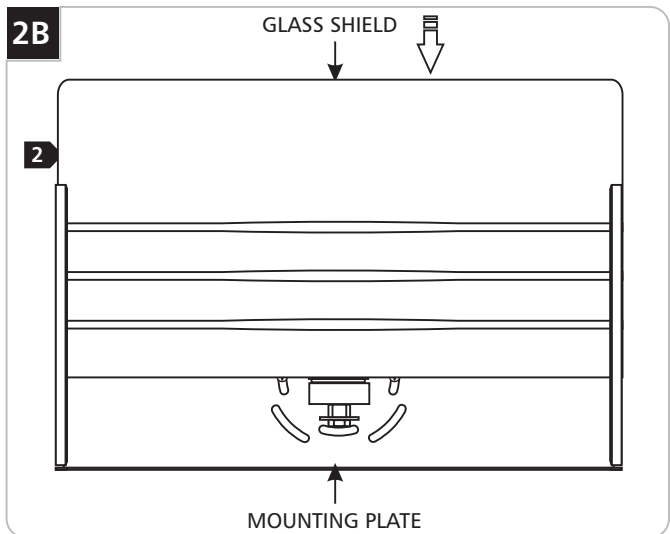


**CAUTION:** To reduce the risk of a burn or electric shock during relamping, disconnect the power to the fixture by turning the wall switch off.

Use **MAX** 120 Volt, **18** Watt Type GU24 Base Self Ballasted Spiral Compact Fluorescent Lamp.



- 1** Push the lamp pins into the large portion of the socket slots and rotate it clockwise to lock it in place securely.



- 2** Carefully slide the glass shield into the mounting plate.

**SAVE THESE INSTRUCTIONS!**

**2** thousand degrees™

7400 Linder Ave, Skokie, IL 60077  
847.410.4400

[www.2thousanddegrees.com](http://www.2thousanddegrees.com)

© 2008 Tech Lighting, L.L.C. All rights reserved. The "2thousand degrees" graphic is a registered trademark of 2thousand degrees. 2thousand degrees reserves the right to change specifications for product improvements without notification.

A Generation Brands Company