

# MonoRail Bugs

700MOBUG\_ 1.6

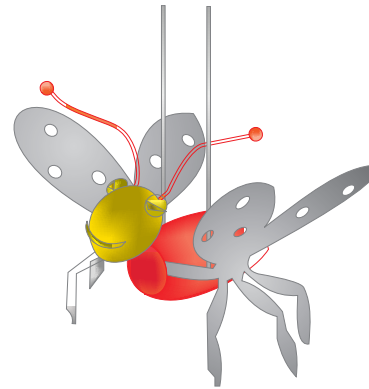


## GENERAL PRODUCT INFORMATION:

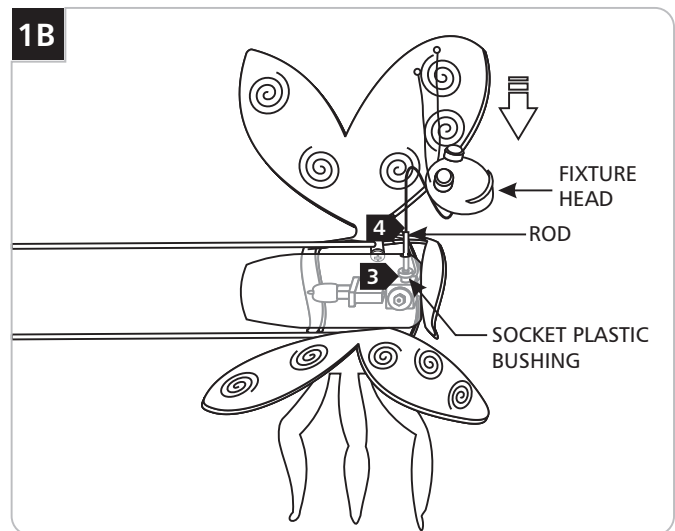
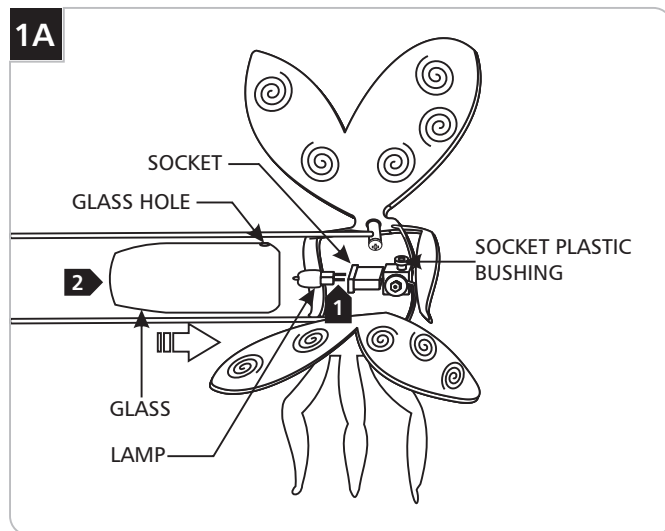


This product is ETL listed and suitable only for indoor dry locations and approved for use at any height above the finished floor.

This product should be used with Tech Lighting MonoRail system only.



## Installing the Lamp



**CAUTION:** To reduce the risk of a burn or electric shock during relamping, disconnect the power to the fixture.

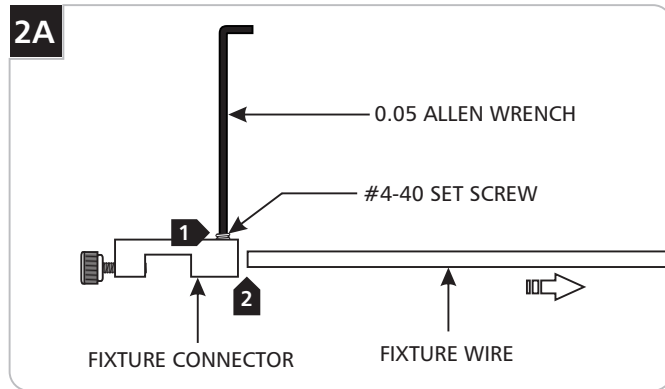
**NOTE:** Use only your fingers and a soft cloth to replace the lamp.

Use **MAX 20 Watt, Bi-Pin Halogen Lamp.**

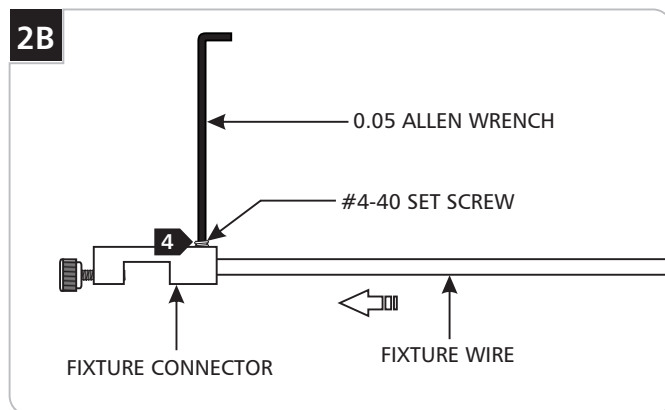
- 1** Gently insert the lamp pins all the way into the socket holes.
- 2** Slide the glass onto the socket and align the glass hole with the socket plastic bushing.

- 3** Push the close end of the rod through the glass hole completely into the socket plastic bushing.
- 4** Push the fixture head wire all the way into the rod.

## Resizing Fixture Wires (If Necessary)

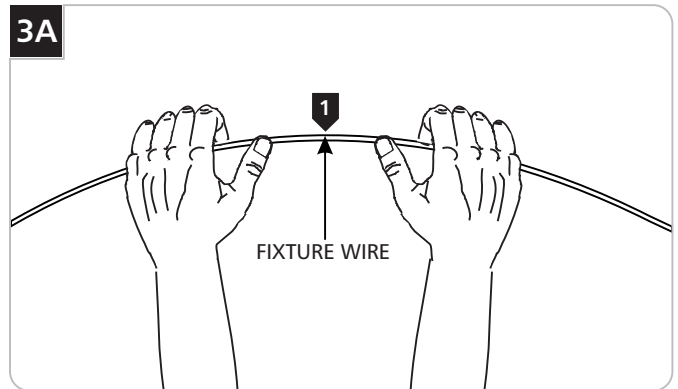


- 1 Loosen (**Do Not Remove**) the #4-40 set screw on the fixture connectors with the 0.05 Allen wrench.
- 2 Remove the fixture connectors.
- 3 Cut the wires to the desired length with a sharp cutter.



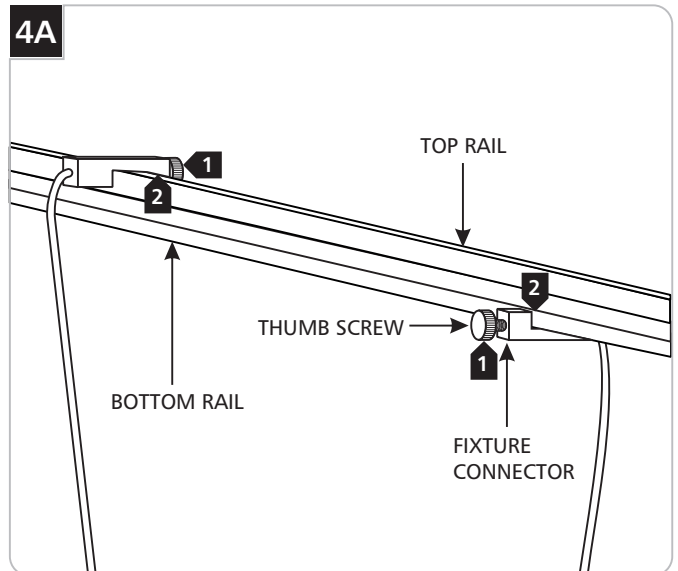
- 4 Feed the fixture wires into the fixture connector holes and tighten the #4-40 set screw with the 0.05 Allen wrench.

## Shaping the Fixture Wires (If Necessary)



- 1 Bend the fixture wires to the desired shape by hands.

## Hanging the Bug



**NOTE:** One fixture connector must be mounted on the top rail and the other one on bottom rail.

- 1 Loosen the thumb screw on the fixture connectors.
- 2 Place the fixture connectors one to the bottom and the other one to the top rail and tighten the thumb screws.

## IMPORTANT SAFETY INSTRUCTIONS

*To reduce the risk of fire, electrical shock, exposure to excessive UV radiation, or injury to person:*

- Use this fixture indoors only.
- Do not look directly at the lighted lamp.
- Do not remain in light if skin feels warm.
- Risk of fire: Use only the type of lamp and maximum wattage indicated in this instruction manual.
- Never cover the halogen lamp with anything other than a Tech Lighting lamp shield and never place flammable material close to your fixture.
- Never turn the fixture on and off by connecting and disconnecting the halogen lamp.
- Do not touch the fixture shades or lamp shield while the fixture is on. These surfaces may be HOT.

## Halogen Lamp General Information

- A new halogen lamp may smoke slightly when it is used for the first time. This is perfectly normal; the protective coating is simply being vaporized.

### Two Tips For Prolonging Halogen Lamp Life

- First avoid touching the lamp with bare hands during installation. Any contaminant, even the oil from your hands can deteriorate the lamp. Rubbing alcohol can be used to remove any contaminant.
- Second, do not run the lamps at full power when you do not need to. However, if dimming the fixture for an extended period of time, occasionally bring the light up to full brightness for a few minutes to complete the halogen cycle.

**SAVE THESE INSTRUCTIONS!**



**TECH LIGHTING®**

7400 Linder Ave, Skokie, IL 60077

847.410.4400

[www.techlighting.com](http://www.techlighting.com)

© 2008 Tech Lighting, L.L.C. All rights reserved. The "Tech Lighting" graphic is a registered trademark of Tech Lighting, L.L.C. Tech Lighting reserves the right to change specifications for product improvements without notification.

A Generation Brands Company