



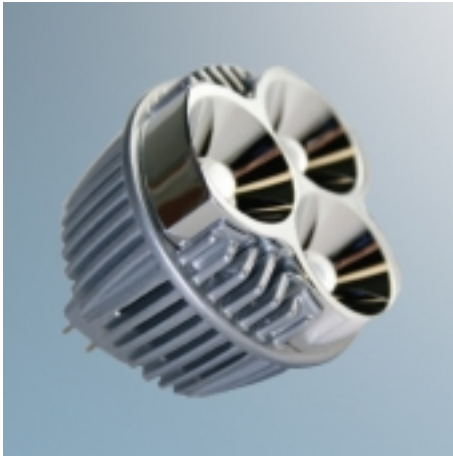
Job Name:

Contact:

Fixture Type:

Part Number:

USHIO SYNERGY LED MR16



Description:

4W LED MR16 directly replaces 20 - 25W halogen MR16.

Provides 80% energy savings. Meets efficiency requirements of California's Title 24 regulations.

Click [here](#) for further information.

Part Numbers:

SYN/12°/3100

SYN/24°/3100

SYN/34°/3100

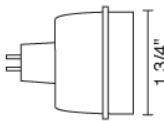
SYN/50°/3100

SYN/12°/4200

SYN/24°/4200

SYN/34°/4200

SYN/50°/4200



Technical Specs:

12V AC/DC, 50/60Hz input

5VA, 4W for 1 (4 Watt LED)

White 160 lumens

Warm White 139 lumens

Suitable for dry locations only

GU5.3 base

Dimmable

Not compatible with electronic transformers