

INSTALLATION INSTRUCTIONS

TECHNICAL

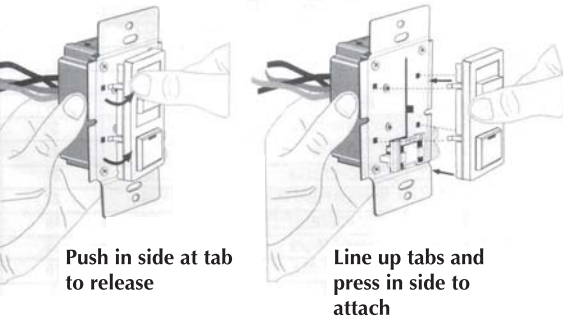
MARK VII DIMMER

Art. No. 76023 dimmer switch



Tools needed to install your Dimmer:
Slotted/Philips Screwdriver
Pliers
Cutters
Electrical Tape
Pencil
Ruler

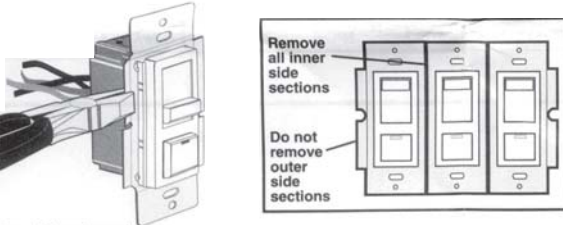
Changin the color of your Dimmer:
Your Dimmer includes two color options. The Dimmer ships with White frame attached. To change color of frame, proceed as Follows:



Move the slider up or down one full cycle to automatically engage the slider controle mechanism.

Installing Dimmer by itself or with other devices:
If installing Dimmer in a single device application, proceed with the INSTALLING YOUR DIMMER section. If installing Dimmer in a multi-device application, proceed as follows:

MULTI-DEVICE APPLICATION:
NOTE: You only need to remove side sections if installing with dimmers or if it does not fit in wall box - not when installing mechanical switches.



When installing more than one dimmer in the same location, the side sections of the mounting strap must be removed. Use pliers to carefully bend side sections back and forth until they break off. No derating is required in this mult-device installation as referenced in the following chart.

MAXIMUM LOAD PER DIMMER FOR MULTI-DEVICE				
Cat. No.	Volts	Single	Two Gang	More than 2 Devices
IP710-DL	120	1200VA	1200VA	1200VA
IP710-DL	277	1500VA	1500VA	1500VA

MAXIMUM BULT WATTAGE:
0-10VDC ballasts are rated in Volt-Amps (VA). The maximum number of ballast per dimmer is based on the load VA rating (see Maximum Load per Dimmer table) or 60 ballast maximum, which ever is less. The maximum bulb wattage is determined by the efficiency of the ballast. The tables on the next page show the maximum number of ballasts that can be connected to a single dimmer for different 0-10VDC ballasts.

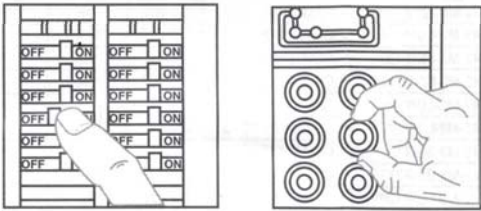
For direct load application configurations (Wiring Diagrams 1 and 3), refer to Table 1 and Table 2 for ballast information.

NOTE: For additional switching capacity (up to 50 ballast), use dimmers in conjunction with a Leviton ODP 120/277V Power Pack.

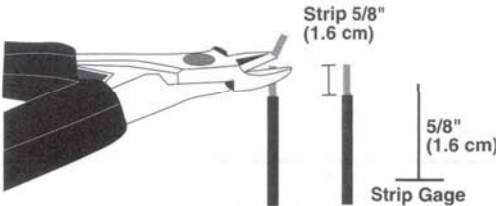
For applications using Leviton's ODP (Wiring Diagrams 2 & 4 and Talbes 3 & 4), ODP switch ratings are as follows (refer to ODP Instruction Sheet for additional information):

ODP SWITCH RATINGS:
20 Amps for 120 and 277 VAC Ballast

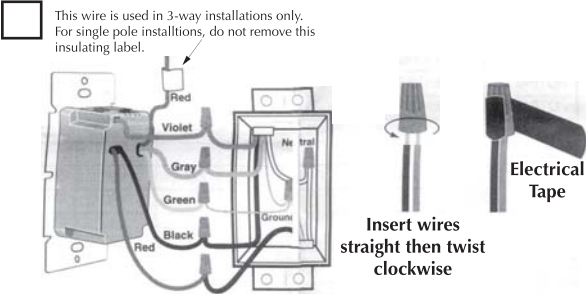
STEP 1 WARNING: To avoid fire, shock, or death: **TURN OFF POWER** at chircuit breaker or fuse and test that power is off before wiring!



STEP 2 Preparing wires:
NOTE: Ensure that low-voltage wiring (for Gray and Violet connection of dimmer) is installed at wall box that will house the IP710 Dimmer.
- Pull off pre-cut insulation from Dimmer leads.
- Make sure that the ends of the wires from the wall box are **straight (cut if necessary)**.
- Remove 5/8" (1.6cm) of insulation from each wire in the wall box (shown)
- **For Single-Pole Application, go to Step 3A**
- **For 3-Way Application, go to Step 3B**

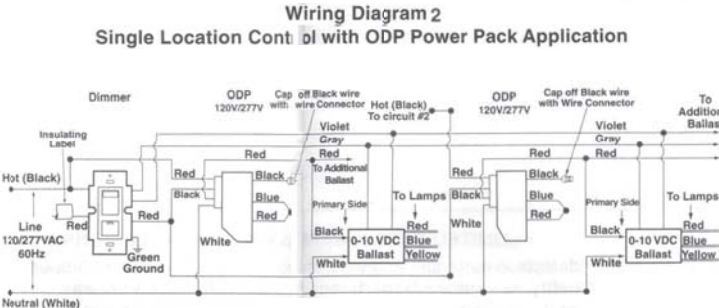
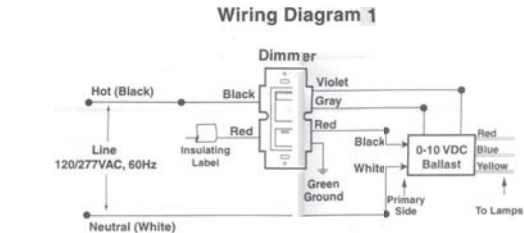


STEP 3a Single-Pole Wiring Application:

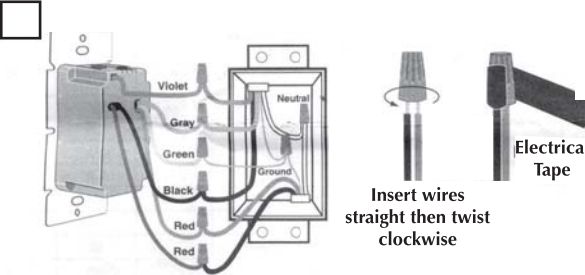


Connect wires per WIRING DIAGRAM as follows:
Screw wire nuts on clockwise making sure no bare conductors show below the wire connectors. Secure each connector with electrical tape.

- Green dimmer Ground lead to Green or bare copper wire in wall box.
 - Black dimmer lead to Line Hot wall box wire.
 - Red dimmer lead without insulating label to Load wall box wire.
 - Remaining Red dimmer lead should have Red insulation label affixed.
- NOTE:** If insulating label is not affixed to Red lead, use a small wire nut or electrical tape to cap off.
- Violet dimmer lead to (+) Violet connection on ballast.
 - Gray dimmer lead to (-) Gray connection on ballast.
- Proceed to Step 4.**

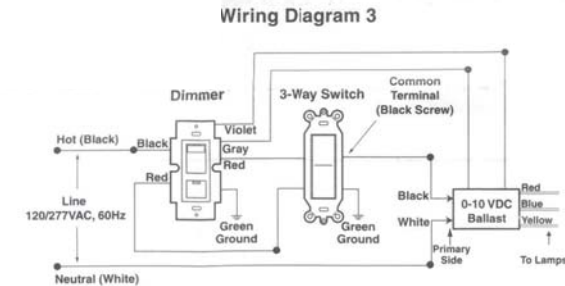


STEP 3b 3-Way Wiring Application:

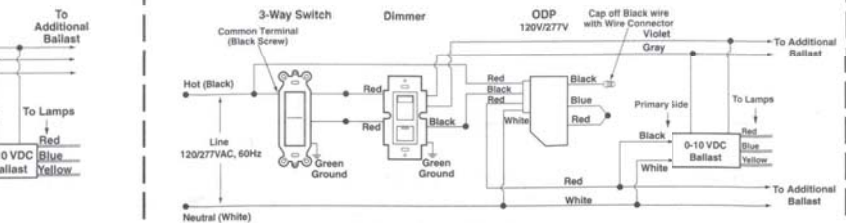


Connect wires per WIRING DIAGRAM as follows:
Screw wire nuts on clockwise making sure no bare conductors show below the wire connectors. Secure each connector with electrical tape.

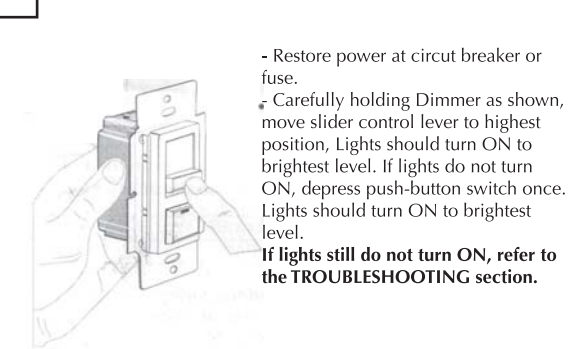
- NOTE:** Dimmer can be installed on either the Load or Line side.
- Green dimmer Ground lead to Green or bare copper wire in wall box.
 - Black dimmer lead to tagged (common) wall box wire identified.
 - Remove Red dimmer insulating label from Red lead.
 - Any Red dimmer lead to Line Hot wall box wire.
 - Violet dimmer lead to (+) Violet connection on ballast.
 - Gray dimmer lead to (-) Gray connection on ballast.



Wiring Diagram 4 Two Location Control with ODP Power Pack Application



STEP 4 Testing your Dimmer prior to mounting in wall box:



- Restore power at circuit breaker or fuse.
- Carefully holding Dimmer as shown, move slider control lever to highest position, Lights should turn ON to brightest level. If lights do not turn ON, depress push-button switch once. Lights should turn ON to brightest level.
- **If lights still do not turn ON, refer to the TROUBLESHOOTING section.**

STEP 5 Dimmer Mounting: TURN OFF POWER AT CIRCUIT BREAKER OR FUSE.



Installation may now be completed by carefully positioning all wires to provide room in wall box for dimmer. Mounting dimmer into box with mounting screws supplied. Attach wallplate.

STEP 6 Restore Power: Restore power at circuit breaker or fuse. Installation is complete.

