

CEILING SYSTEMS

[Between us, ideas become reality.]®

FILAMENTS™
Fabric Panels



FILAMENTS Fabric Panels

Nitro



Tonic



Spritzer



Gingerale



Crystal



Cream Soda



8' x 8' Formations™ Accent Cloud with 2' x 2' Filaments Nitro Tonic and 2' x 2' Metaphors® Convex Coffers with Ultima® Tegular infill panels and Prelude 15/16" White grid.



6' x 8' Formations Accent Cloud with 2' x 2' Filaments Anchorage Vanilla and Lido Hermosa, Prelude 15/16" Vanilla grid.

Anchorage



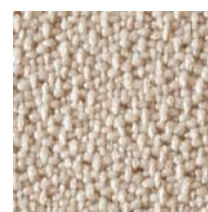
Slate



Angora



Goose



Birch



Wolf



Vanilla

Due to printing limitations, color may vary from actual product.

Cover photo: 2' x 2' Filaments Network Frost with 2' x 2' MetalWorks™ Vector™ Extra Microperf panels in Gun Metal Grey, SoundSoak® Acoustical Wall System Grey Mix, Prelude® 15/16" Gun Metal Grey grid.

Network



Horizon



Frost



Putty



Sunbeam



Powder

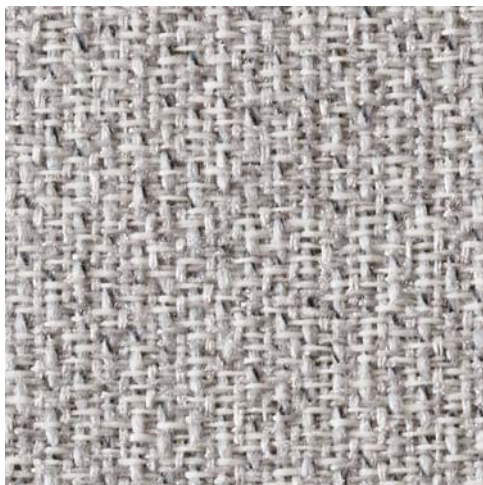


6' x 8' Axiom® Cloud with WoodWorks® Vector 2' x 2' Maple panels and 2' x 2' Filaments Anchorage Vanilla, Prelude 15/16" Vanilla grid.



2' x 2' Filaments Network Frost with 2' x 2' MetalWorks Vector Extra Microperf panels in Gun Metal Grey, SoundSoak Acoustical Wall System Grey Mix, Prelude 15/16" Gun Metal Grey grid.

Lido



Cape May



Oak Bluffs



Huntington



Hermosa

Due to printing limitations, color may vary from actual product.

FILAMENTS™

Fabric Panels

LEED Credits					
Waste Management	Recycled Content	Local Materials	Renewable Materials	Energy Performance	Daylight & Views
✓	✓	*	✓		

* Credit is location-dependent

Key Selection Attributes

- Good sound absorptive, fabric-covered lay-in panels
- Coordinates with Armstrong SoundSoak Acoustical Walls, Formations Clouds and Armstrong Suspension Systems

Typical Applications

- Offices/conference rooms
- Waiting areas/lobbies
- Gift/specialty shops
- Dining areas/restaurants

Relative Installed Cost

\$	\$\$	\$\$\$	\$\$\$\$
----	------	--------	----------

Colors

See List

Visual Selection

Performance Selection

GRID FACE	EDGE PROFILE	ITEM NUMBER	DIMENSIONS	COLORS	Factory Mutual Certified		FIRE	SAG RESIST	AVERAGE LIGHT REFLECT	DURABILITY
					ACOUSTICS NRC	CAC				
FILAMENTS										
Lido										
15/16"	Square Tegular	4745	2' x 2' x 3/4"	Hermosa	0.65	35	Class A	Standard	-	Standard
		4746	2' x 2' x 3/4"	Cape May	0.65	35	Class A	Standard	-	Standard
		4747	2' x 2' x 3/4"	Oak Bluffs	0.65	35	Class A	Standard	-	Standard
		4748	2' x 2' x 3/4"	Huntington	0.65	35	Class A	Standard	-	Standard
Anchorage										
15/16"	Square Tegular	4749	2' x 2' x 3/4"	Slate	0.55	35	Class A	Standard	-	Standard
		4750	2' x 2' x 3/4"	Wolf	0.55	35	Class A	Standard	-	Standard
		4751	2' x 2' x 3/4"	Angora	0.55	35	Class A	Standard	-	Standard
		4752	2' x 2' x 3/4"	Goose	0.55	35	Class A	Standard	-	Standard
		4753	2' x 2' x 3/4"	Vanilla	0.55	35	Class A	Standard	-	Standard
		4754	2' x 2' x 3/4"	Birch	0.55	35	Class A	Standard	-	Standard
Nitro										
15/16"	Square Tegular	4755	2' x 2' x 3/4"	Tonic	0.55	35	Class A	Standard	-	Standard
		4756	2' x 2' x 3/4"	Spritzer	0.55	35	Class A	Standard	-	Standard
		4757	2' x 2' x 3/4"	Gingerale	0.55	35	Class A	Standard	-	Standard
		4758	2' x 2' x 3/4"	Cream Soda	0.55	35	Class A	Standard	-	Standard
		4759	2' x 2' x 3/4"	Crystal	0.55	35	Class A	Standard	-	Standard
Network										
15/16"	Square Tegular	4760	2' x 2' x 3/4"	Horizon	0.55	35	Class A	Standard	-	Standard
		4761	2' x 2' x 3/4"	Frost	0.55	35	Class A	Standard	-	Standard
		4762	2' x 2' x 3/4"	Powder	0.55	35	Class A	Standard	-	Standard
		4763	2' x 2' x 3/4"	Putty	0.55	35	Class A	Standard	-	Standard
		4764	2' x 2' x 3/4"	Sunbeam	0.55	35	Class A	Standard	-	Standard

Contact TechLineSM for specific information on recycled content.



Grid Color Selection

Due to printing limitations, shade may vary from actual product.



Physical Data

Material

Wet-formed mineral fiber covered with woven fabric

Surface Finish

Woven fabric

Fire Performance

Flame Spread 25 or under (Factory Mutual Labeled) per ASTM E 84

ASTM E 1264 Classification

Type XI, Form 2, Pattern Z (Woven fabric finish)

Recycled Content

38%

Insulation Value

R Factor - 1.4 (BTU units)
R Factor - 0.24 (Watts units)

Backloading Recommendation

Contact TechLine for specific information

Weight; Square Feet/Carlton

1.25 lbs/SF; 40 SF/ctn

Warranty

1-year limited warranty. Details: armstrong.com/ceilings

Application Considerations

Product is directional.

Fabric ceiling panels are dye-lotted and should be segregated by dye lot. Do not mix.

For fabric ceilings cleaning instructions see CS-3784 Filaments Installation Tip Sheet.

Recommended Suspension System

ITEMS

All Items

SUSPENSION SYSTEM

15/16" PRELUDE®

TechLineSM / 1 877 ARMSTRONG

1 877 276 7876

armstrong.com/filaments

CS-3770-1106

© AWI Licensing Company, 2006

Printed in the United States of America