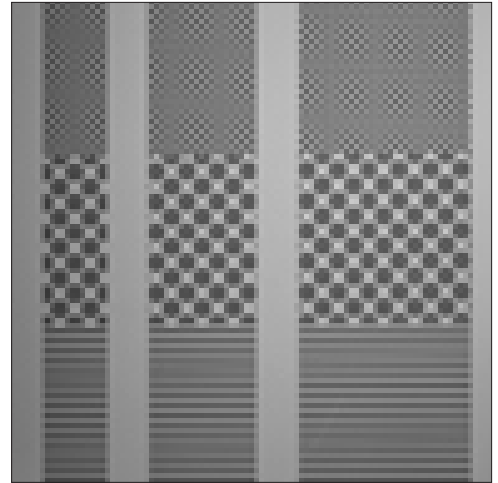


PRODUCT**Alice™ direct-to-glass printing****GLASS TYPE**Architectural,
Decorative**DESCRIPTION**

Whether it's an illustration, pattern, photo or text, Alice can print any image quickly and precisely on glass for either interior or exterior designs. Alice prints in thousands of colors and an infinite number of opacities on virtually any type glass. Simply use any graphic design program to create a digital image. GGI's digital color lab technicians will match colors, scale your image and determine panel layout. Then, Alice prints at 360dpi resolution—that's higher than most fashion magazines—while fusing the image into the glass to prevent fading. Alice products carry an unprecedented 10-year limited warranty against fading. Customers are protected against image degradation greater than 10 percent over the 10-year warranty period.

**TREATMENT**

alice™



Tempered



Laminated



Directional Pattern

PACKING

Depends on application

LEAD TIME

Varies with each project

Printing on glass is extremely affordable and cost-effective for small print runs and customized designs. For example, with Alice there is no need for multiple screens in order to achieve multiple colors in one image. Also, orders are filled much more quickly than in older, more traditional processes such as silk-screening. Most customers are able to receive final products within a week or two of final art/sample approval. Once orders are placed and files are created and approved, the fulfillment process is fast and easy.

* Contact us for special orders and/or thicknesses