

A G E N D A



H A L L O N



A G E N D A

Designed by Brian Graham, Agenda acknowledges the way people work. Smart, well-integrated components allow documents and work tools to be accessed with ease and efficiency. Agenda reclaims and expands valuable work-space with project furniture elements that support concise and intuitive organization and storage.

The Agenda signature edge is shaped from solid wood in an ergonomic waterfall profile that provides comfortable user interaction. Sculpted aluminum finger pulls are gracefully oriented toward the user. The warmth and beauty of Halcon finishes showcase superb craftsmanship and detailing.

In addition to an extensive casegoods offering, the Agenda collection includes a broad range of reception desks, conferencing, and occasional tables. With its innovative design and functional architecture, Agenda sets the standard for premium office furniture.









TOP
Satin Aluminum (AA3)

CENTER
Polished Aluminum (AA4)

BOTTOM
Black (AA8)





LEFT
Wardrobe cabinet

TOP and CENTER
Slide out tablet shelf

BOTTOM
Worksurface element reader shelf

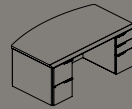
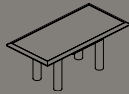


Signature workstation
Quarter Cut Walnut (WAQC) with
Light Walnut finish (WA10S4)

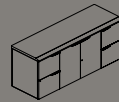
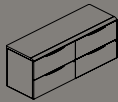
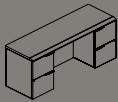


“U” shaped bowfront reception desk
Quarter Cut Flintwood Ebony (EBFWQC)
with Natural Ebony finish (EB16S4)

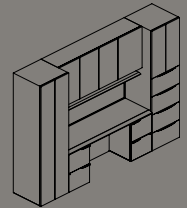
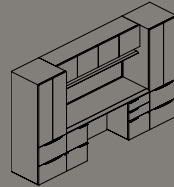
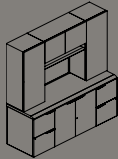
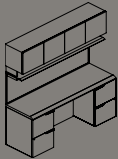
Desks



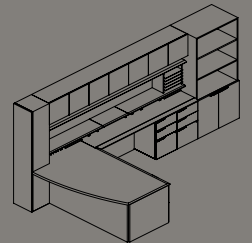
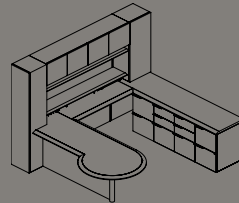
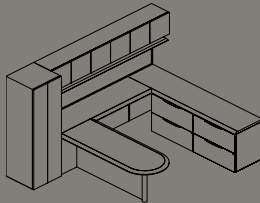
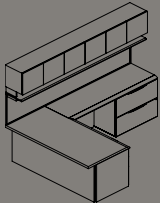
Credenza



Workwalls



Workstations



HALCON

1811 2nd Avenue NW
Stewartville, Minnesota 55976

Telephone 507.533.4235
Facsimile 507.533.9349
www.halconcorp.com