

Mannerly™ Technical Specification

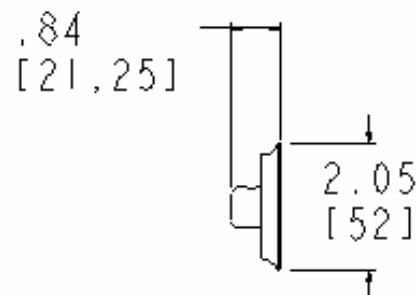
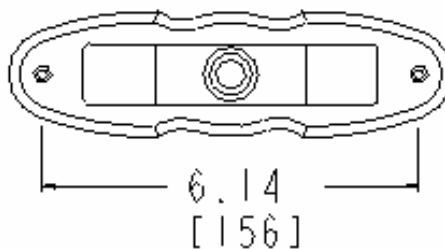
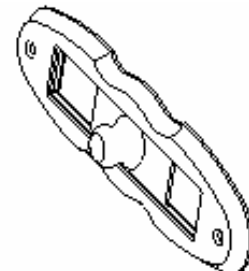
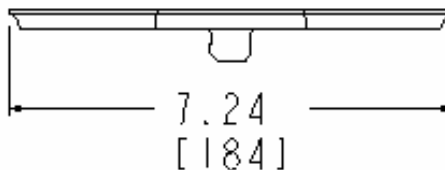
Vacant / Occupied Sign

YB7595

Stock Numbers:

- q YB7595NL – Vacant / Occupied Sign
Polished Nickel Finish

Dimensions:



Materials:

Vacant / Occupied Sign is constructed of zinc.

Installation Instructions:

1. Position the mounting template in the desired location on the wall or door.
2. Using a level, align the template and tape it to the wall.
3. Drill the two hole locations as marked on the template.
4. Remove the template from the wall or door.
5. Remove the frame from the box.
6. Select the vacant / occupied sign (English or French) to be used.
7. Turn frame over and insert sign into frame.
8. Secure to door with screws or wall anchors included (shorter screw for installation into wood and longer screws for use with plastic anchors).

Cleaning Instructions:

To preserve the fine finish of this product, clean only with a soft damp cloth. Dry well. Do not use commercial or abrasive cleaners.

Stock Number: _____ Vacant / Occupied Sign
By Creative Specialties



25300 AL MOEN DRIVE • NORTH OLMS TED, OH 44070
CORPORATE HEADQUARTERS: (800) 321-8809 • FAX: (800) 848-6636
INTERNATIONAL: (440) 962-2000 • FAX: (440) 962-2726
CUSTOMER SERVICE (USA): 800-882-0116 • FAX: (888) 379-2720

©Copyright Creative Specialties International 2005

Literature #BA1281