



# **Clad Lift-and-Slide Doors**

(rev. 6.16.06)

Copyright © 2006 by Pacific Architectural Millwork

All rights reserved. No part of this manual may be reproduced or transmitted in any form or by any means without permission by Pacific Architectural Millwork.



# **Clad Lift-and-Slide Doors**

## **Section Contents**

Product Overview .....	2
Sample Configurations.....	4
PXX XXP (Teak): Exterior Elevation.....	5
PXX XXP (Teak): Vertical Section.....	6
PXX XXP (Teak): Plan Section.....	7
PXX XXP (Teak): Plan Section (Retracted Panels) .....	8
PXX XXP (Teak): Head Detail.....	9
PXX XXP (Teak): Sill Detail .....	10
PXX XXP (Teak): Stile Detail.....	11
OXXO (Flush): Exterior Elevation .....	12
OXXO (Flush): Vertical Section at Fixed Panel.....	13
OXXO (Flush): Vertical Section at Active Panel.....	14
OXXO (Flush): Plan Section.....	15
OXXO (Flush): Head Detail at Fixed Panel.....	16
OXXO (Flush): Head Detail at Active Panel.....	17
OXXO (Flush): Sill Detail at Fixed Panel .....	18
OXXO (Flush): Sill Detail at Active Panel .....	19
OXXO (Flush): Meeting Stiles Detail .....	20
OXXO (Flush): Interlocker Detail.....	21
OXXO (Flush): Jamb Detail at Fixed Panel.....	22

## Product Overview



### Introduction

Clad Lift-and-Slide doors by Pacific Architectural Millwork are extraordinary doorways to panoramic views. This is no ordinary sliding door. Our Lift-and-Slide doors create virtual moving walls of wood-framed glass panels that stack or disappear into a pocket, opening up living spaces to the outdoors. Aluminum clad exteriors provide trouble-free maintenance in your choice of custom colors. Lift-and-Slide doors are made from quality hardwoods with optional custom features to complement your project's design.

### Hardware Options

The clad Lift-and-Slide door comes with hardware in your choice of finishes:

- Polished Brass
- Matte Black
- Oil-Rubbed Brass
- White
- Brushed Chrome
- Satin Nickel
- Antique Brass
- Polished Chrome

Key cylinders optional. Custom hardware and handles are also available.

### Glazing Options

Standard glazing for the Lift-and-Slide door uses 1" overall tempered insulated glass. Custom glazing and tinted glass are also available.

### Other Options

The clad Lift-and-Slide door can be purchased with custom options such as screens, and you can choose from two different track options:

- Flush stainless steel track (not recommended for wood floors)
- Teak track

**NOTE: Flush track is not warranted against air, water, or dust infiltration.**

Contact Pacific Architectural Millwork for additional options and customization.

### Wood Species

Our standard wood species are the following:





- Pine
- Vertical Grain Douglas Fir
- Mahogany

Alternative and exotic wood species are also available.

**Product Parameters:**

Max Height:	10'
Min Panel Width:	28"
Max Panel Width:	8', depending on height/weight ratio
Max. Glass Size:	55 sq. ft. or 450 lbs., depending on height/weight ratio
Max Opening:	30'
Muntin Width:	1 <sup>3</sup> / <sub>8</sub> "
Panel Thickness:	2 <sup>11</sup> / <sub>16</sub> "
Screen Thickness:	1 <sup>3</sup> / <sub>4</sub> "
Stiles/Top Rail Width:	3 <sup>5</sup> / <sub>8</sub> "
Bottom Rail Width:	6 <sup>3</sup> / <sub>4</sub> "
Cladding Information:	Custom Kynar™ colors available.
Edge Detail:	<ul style="list-style-type: none"> <li>▪ Exterior Cladding: Traditional edge detail only</li> <li>▪ Interior Wood: Traditional or Contemporary edge detail</li> </ul>

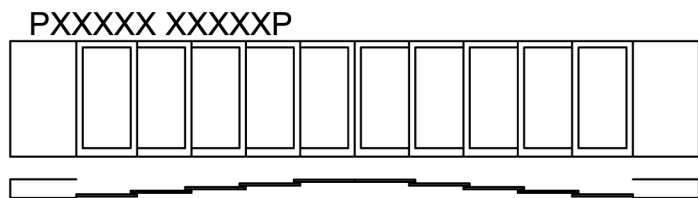
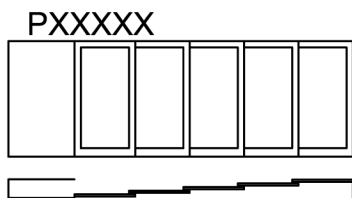
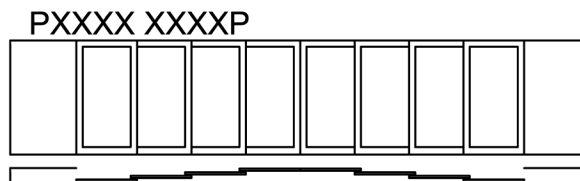
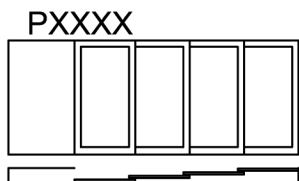
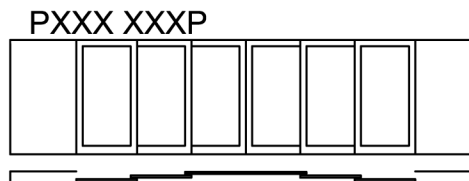
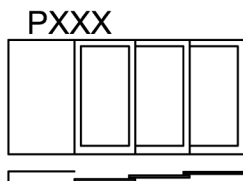
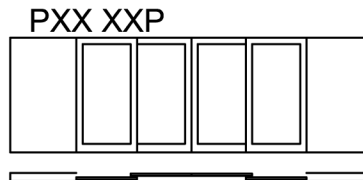
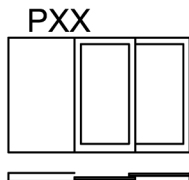
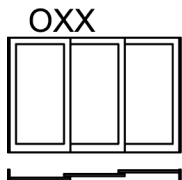
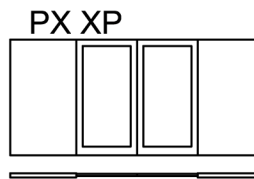
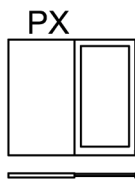
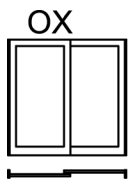
**Hardware Images:**

			
Tapered Handle (Std.)	Recessed Pull	Square Handle	Removable Handle

# Sample Configurations

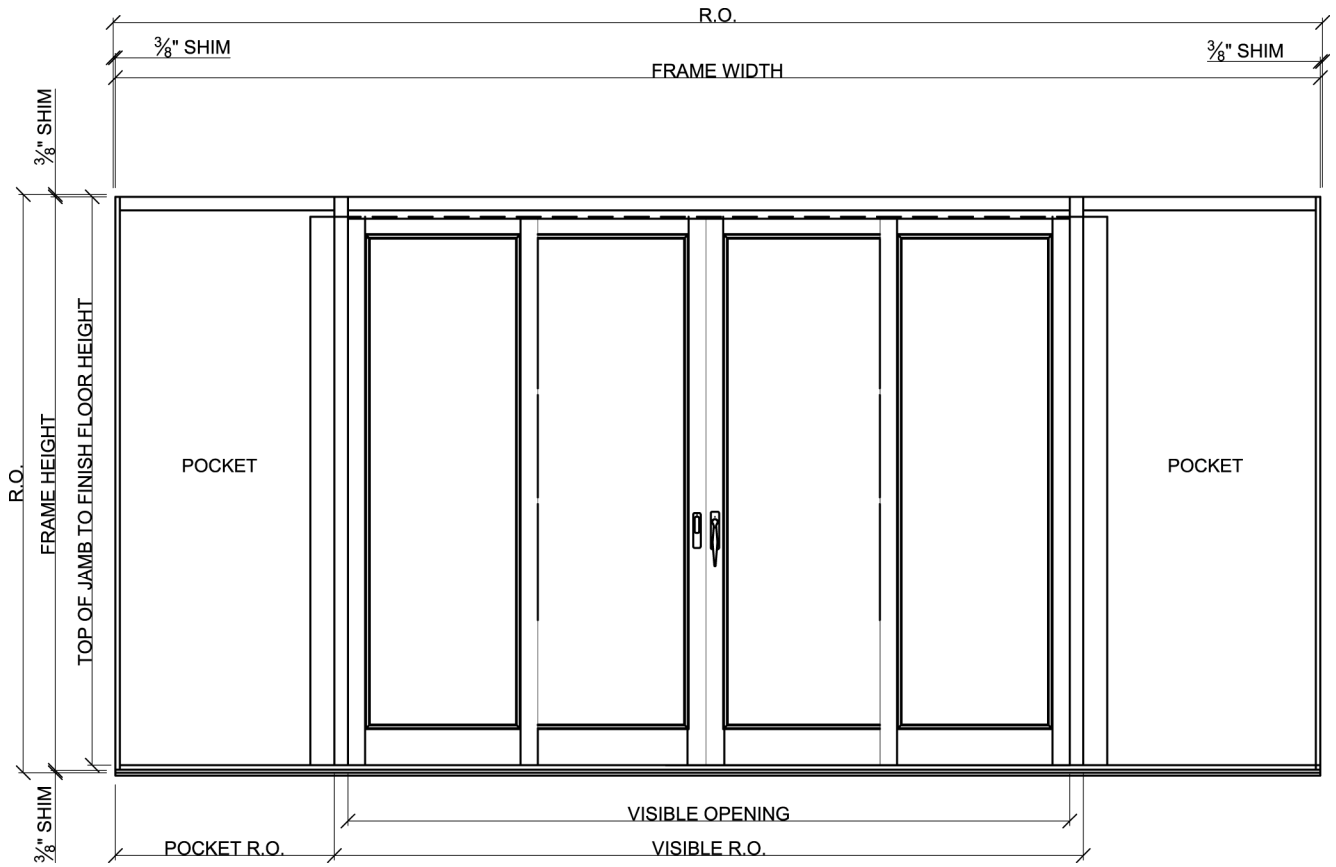
You can order your Lift-and-Slide in either fixed, pocket, or corner configurations. The following drawings show some sample configurations.

(Key: P=Pocket, X=Moving Panel, O=Fixed Panel)

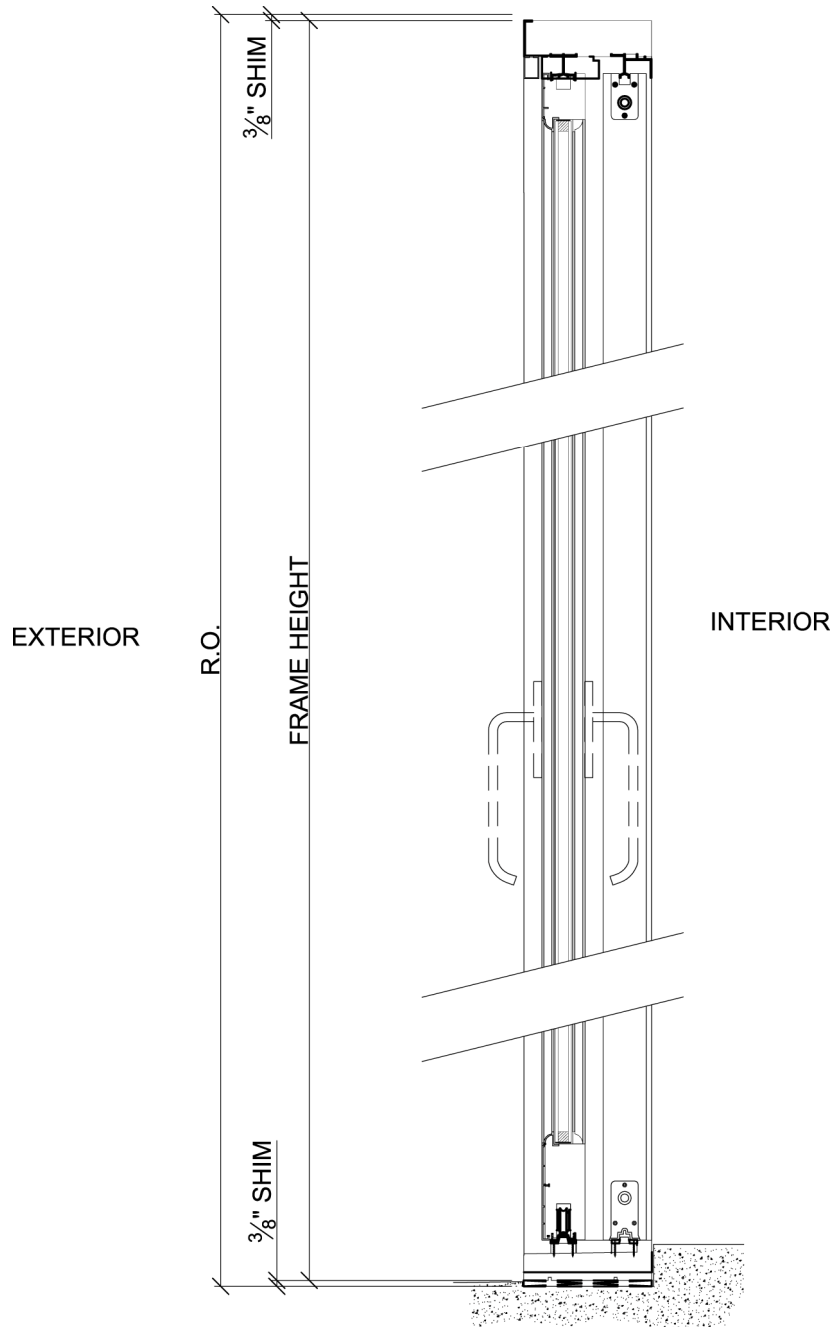


# Clad Lift-and-Slide Doors

(rev. 6.16.06)

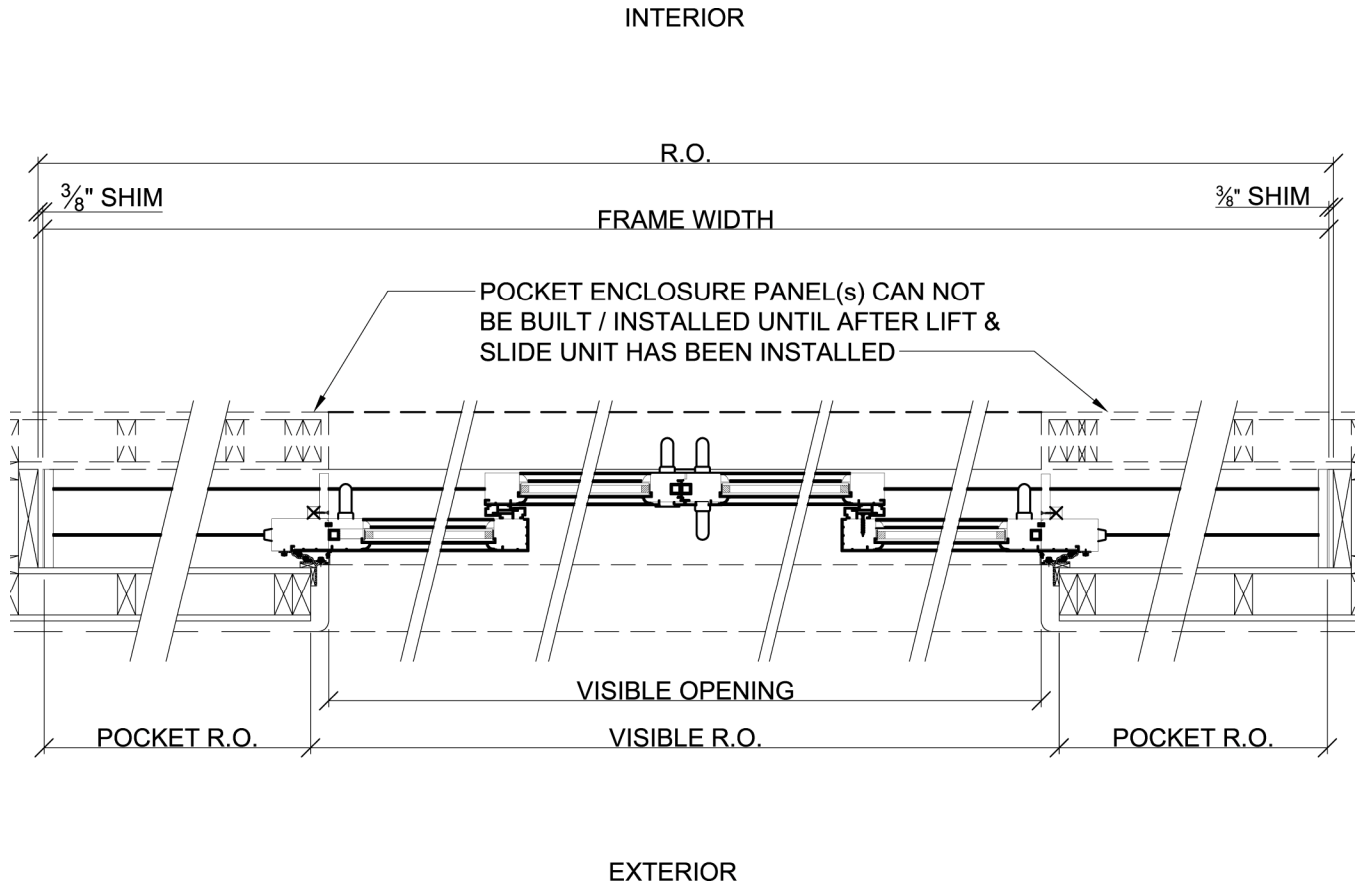


# PXX XXP (Teak): Vertical Section

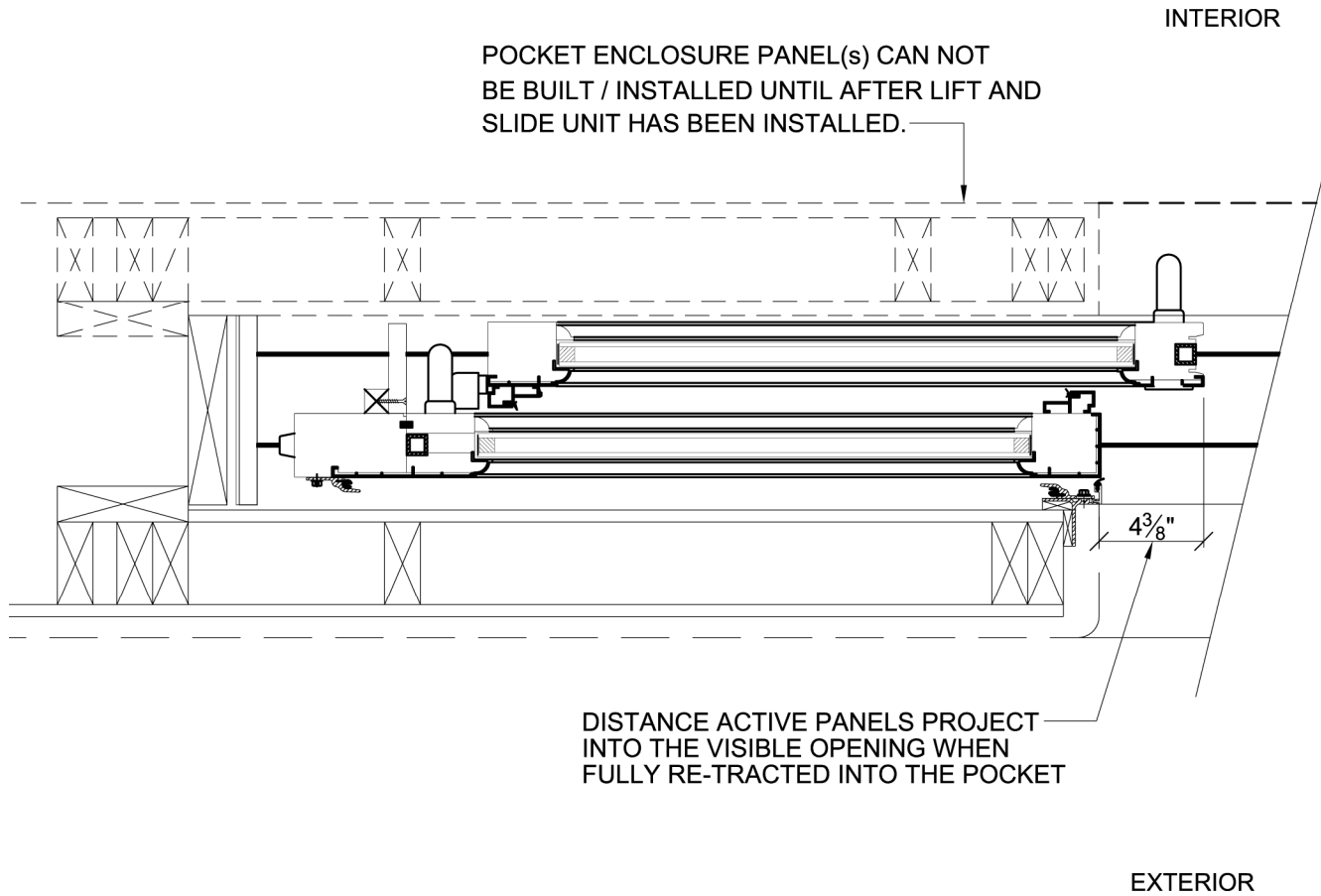




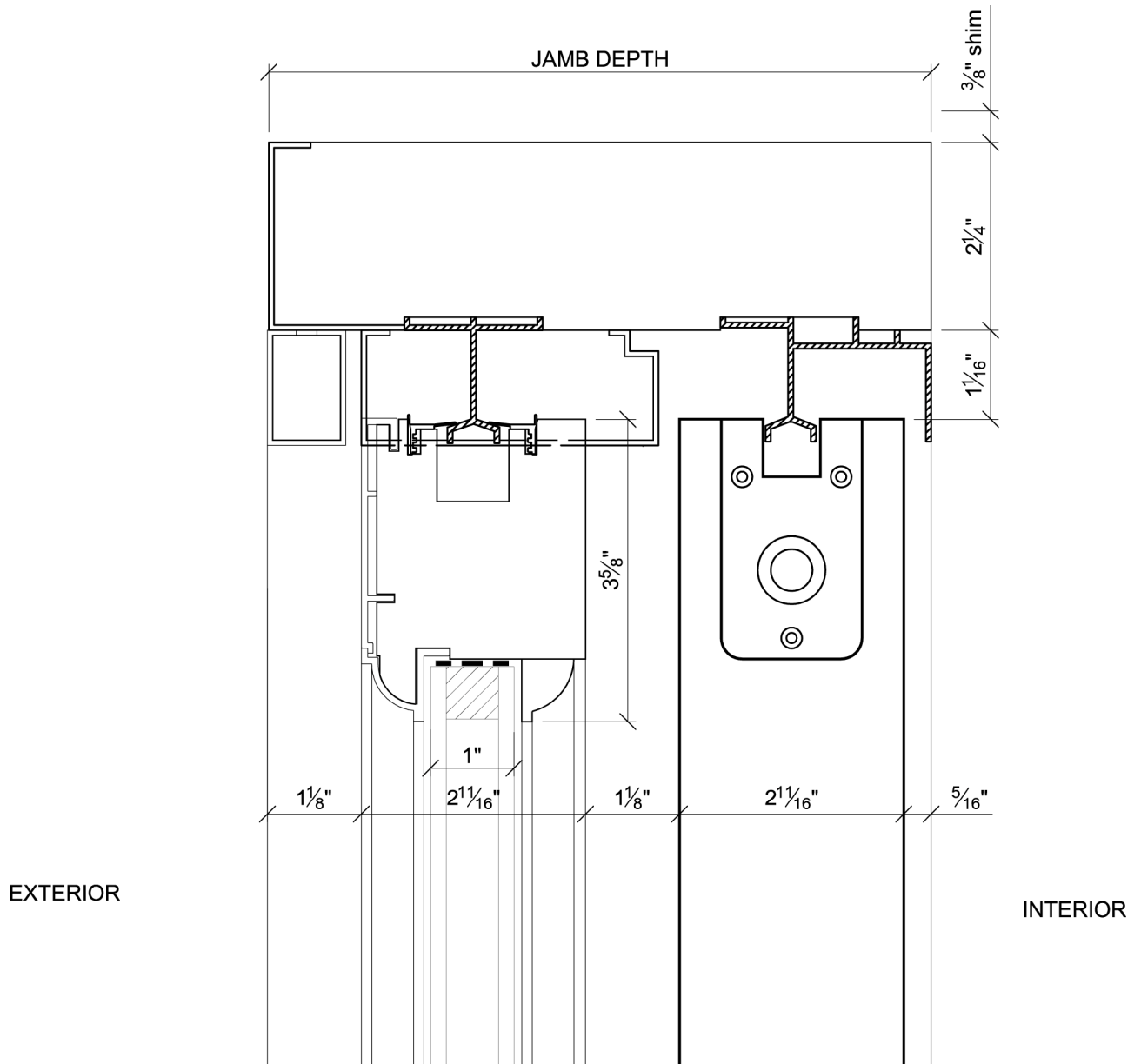
# PXX XXP (Teak): Plan Section



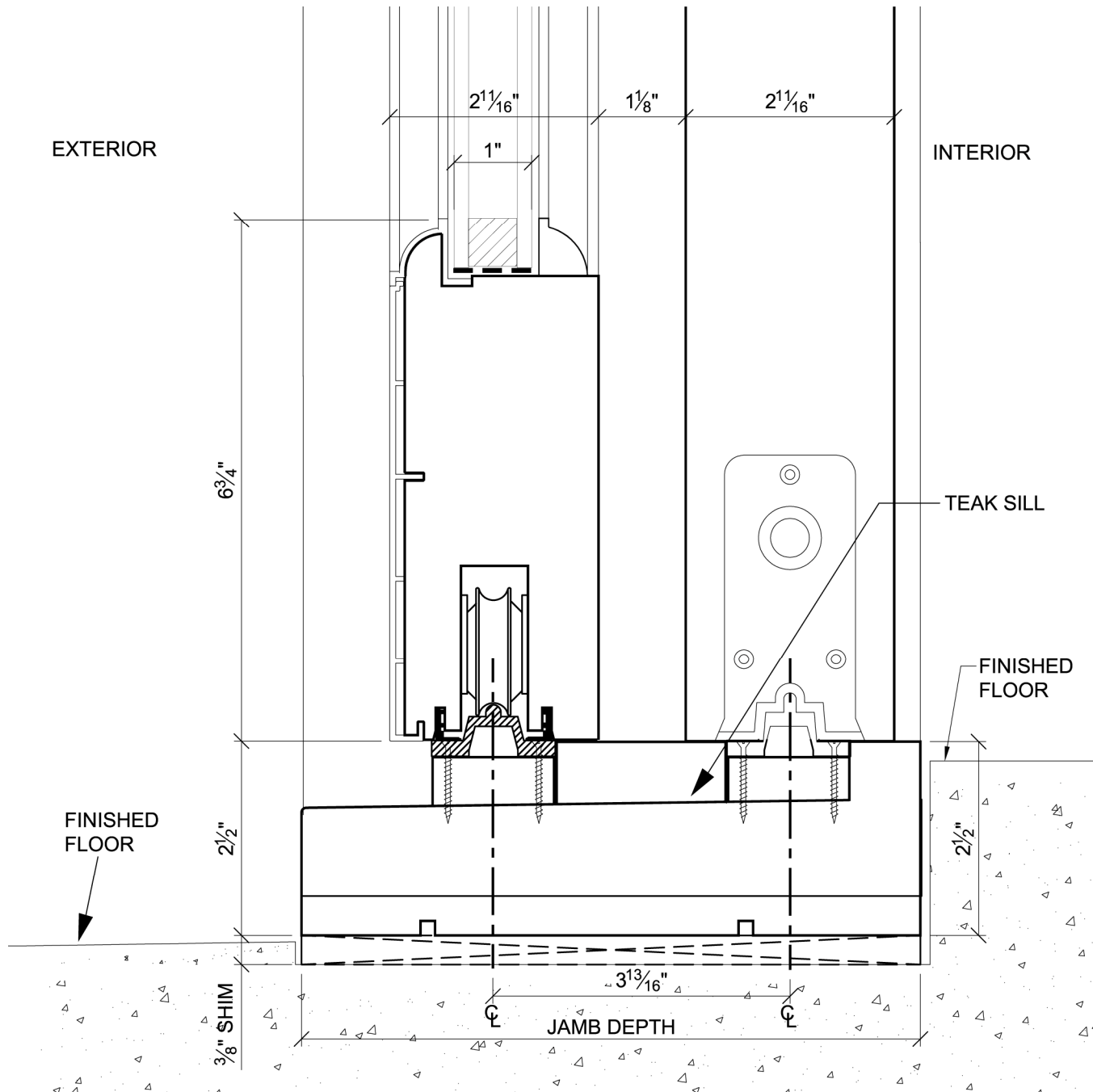
# PXX XXP (Teak): Plan Section (Retracted Panels)



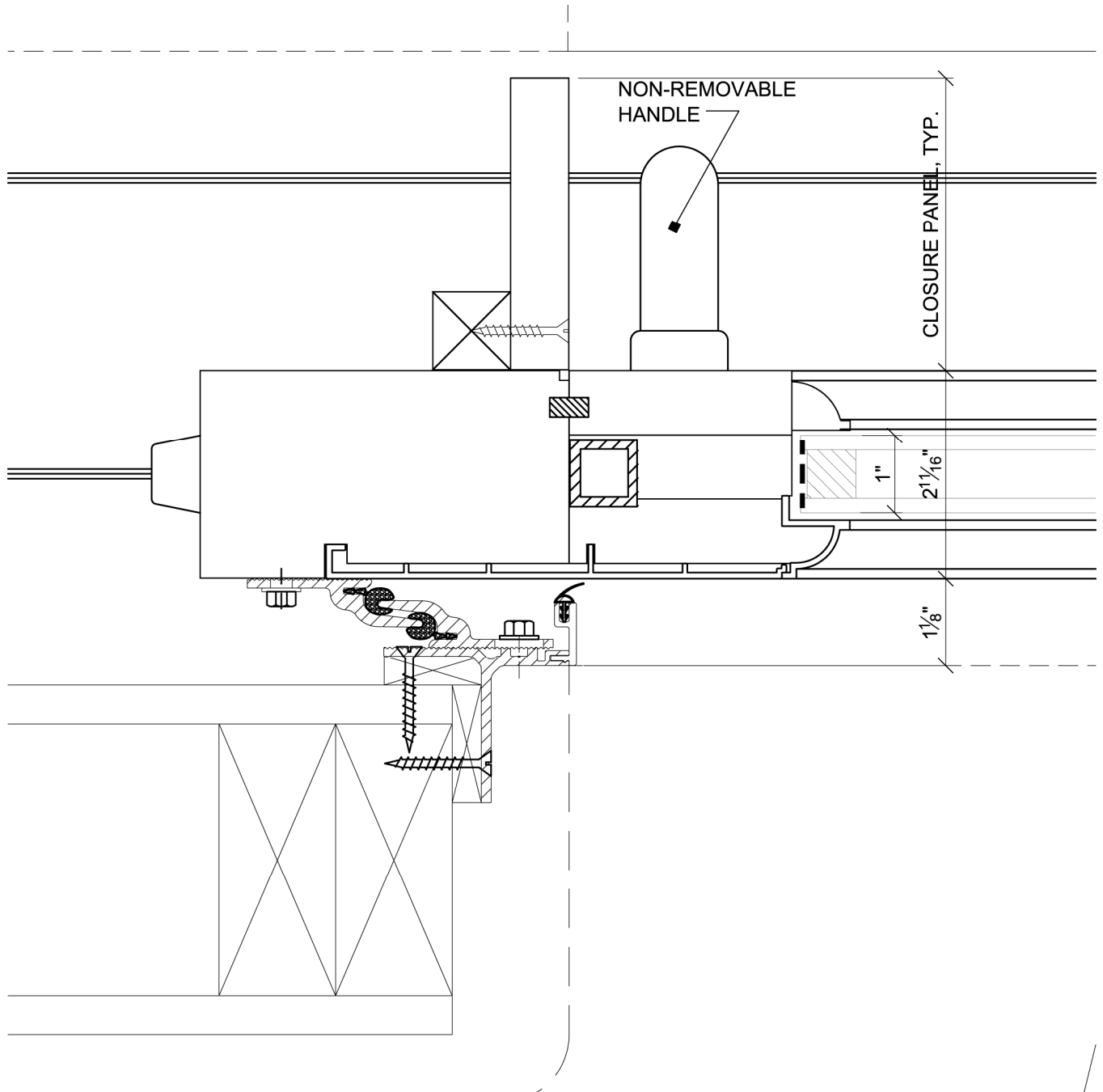
# PXX XXP (Teak): Head Detail



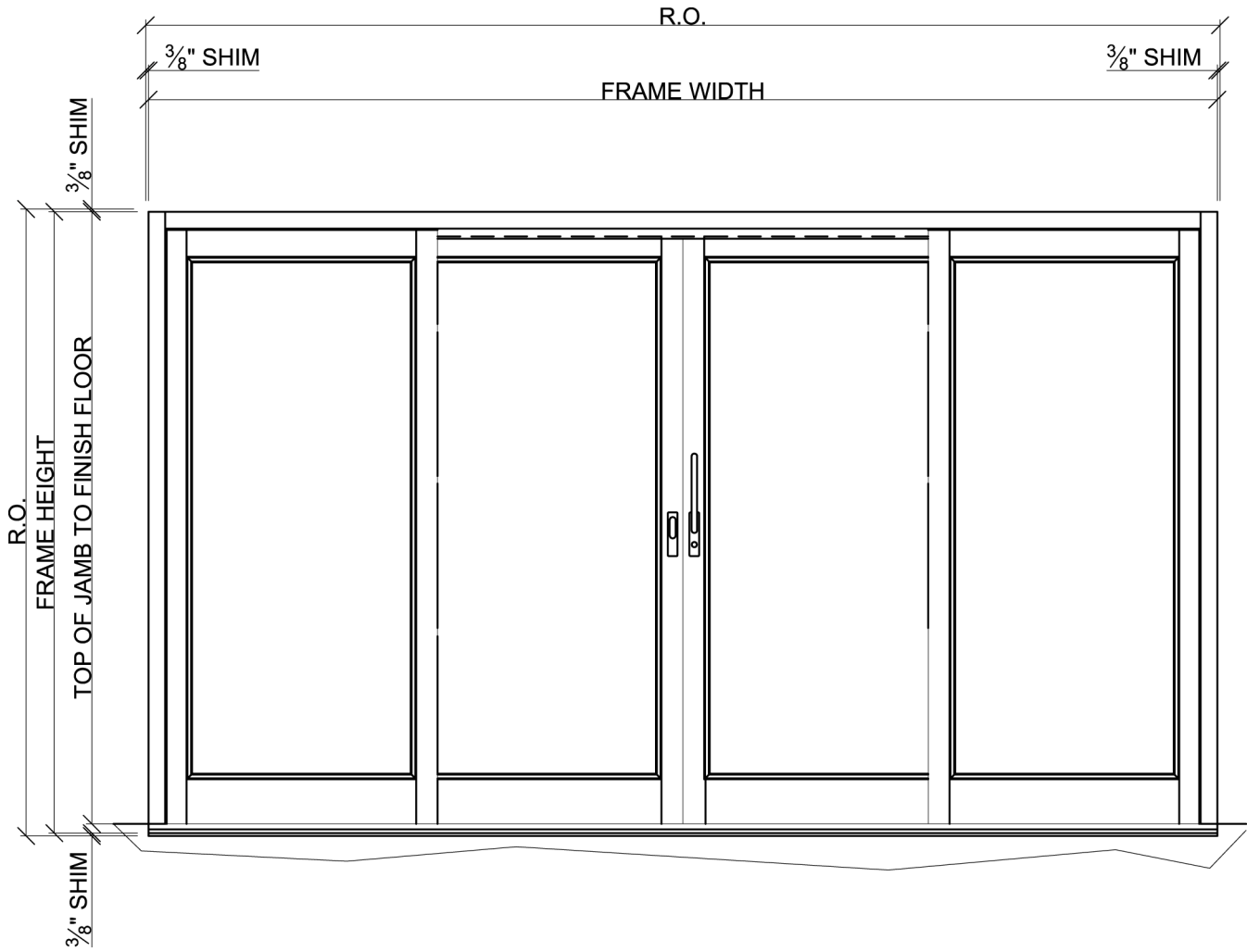
# PXX XXP (Teak): Sill Detail



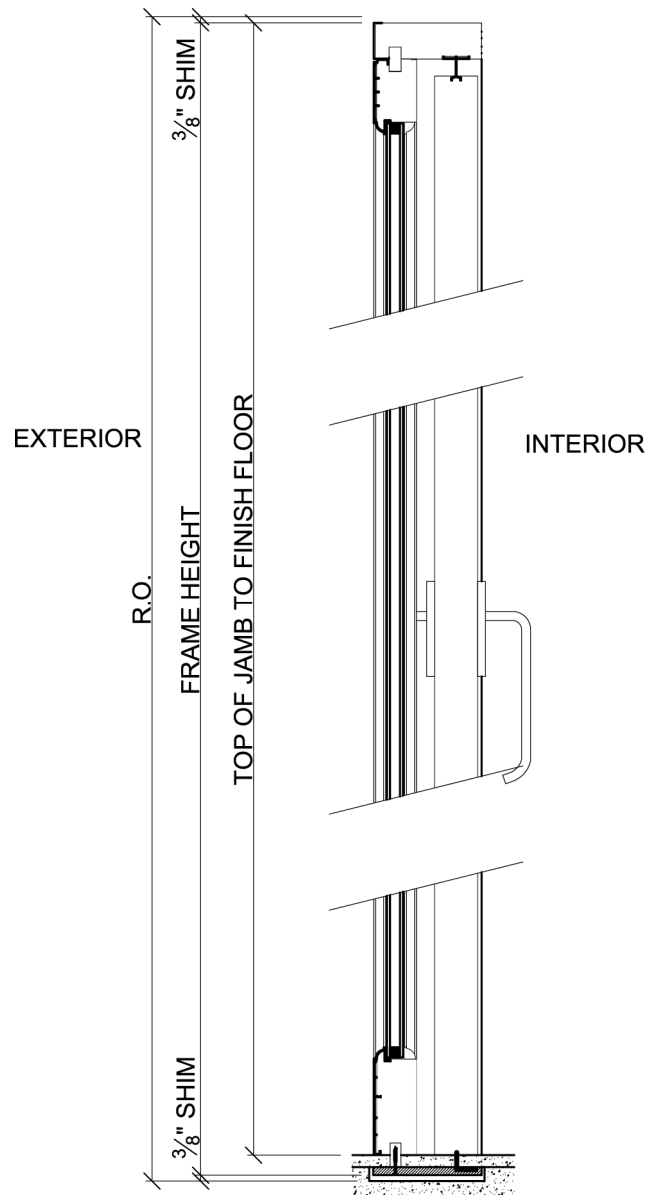
# PXX XXP (Teak): Stile Detail



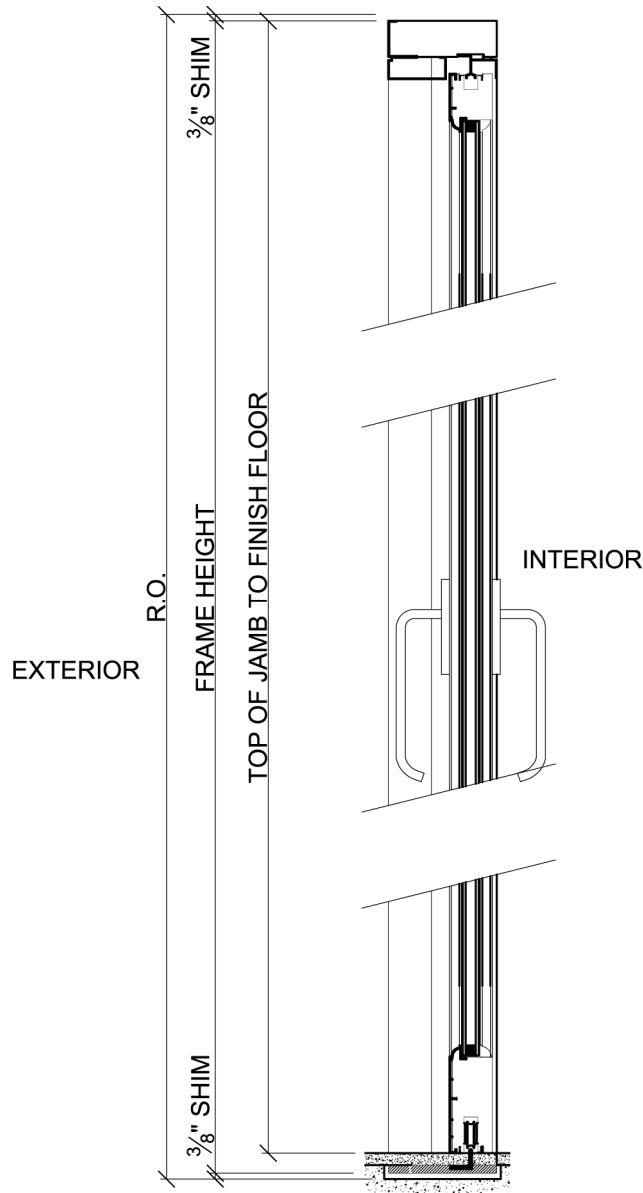
# OXXO (Flush): Exterior Elevation



# OXXO (Flush): Vertical Section at Fixed Panel

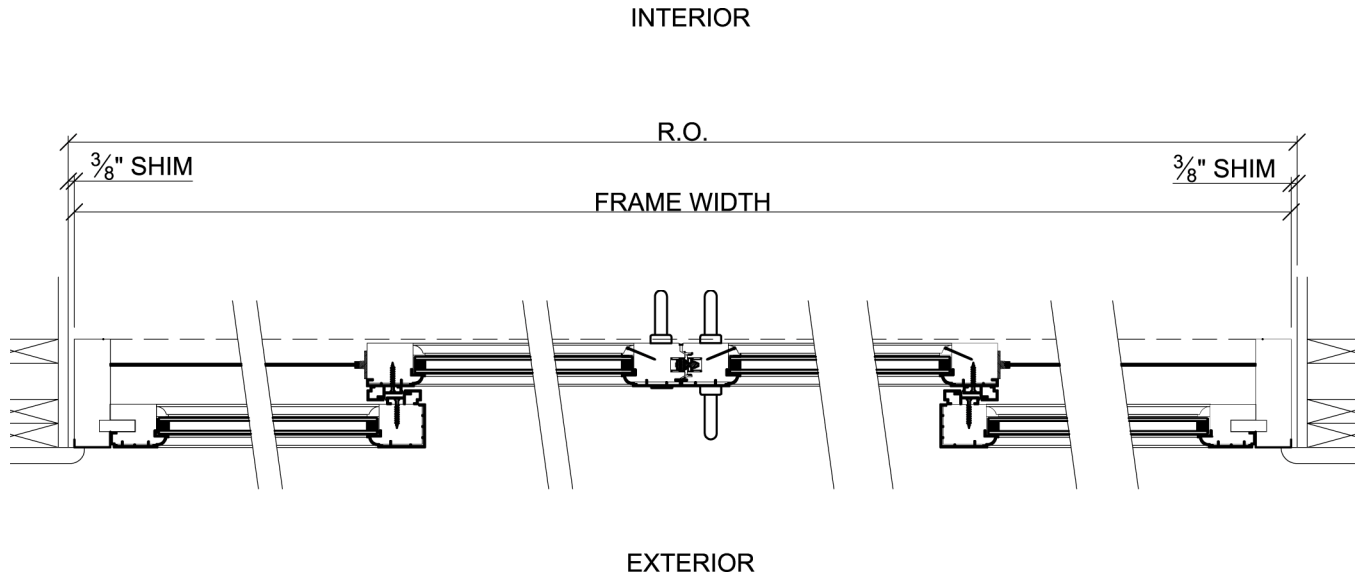


# OXXO (Flush): Vertical Section at Active Panel

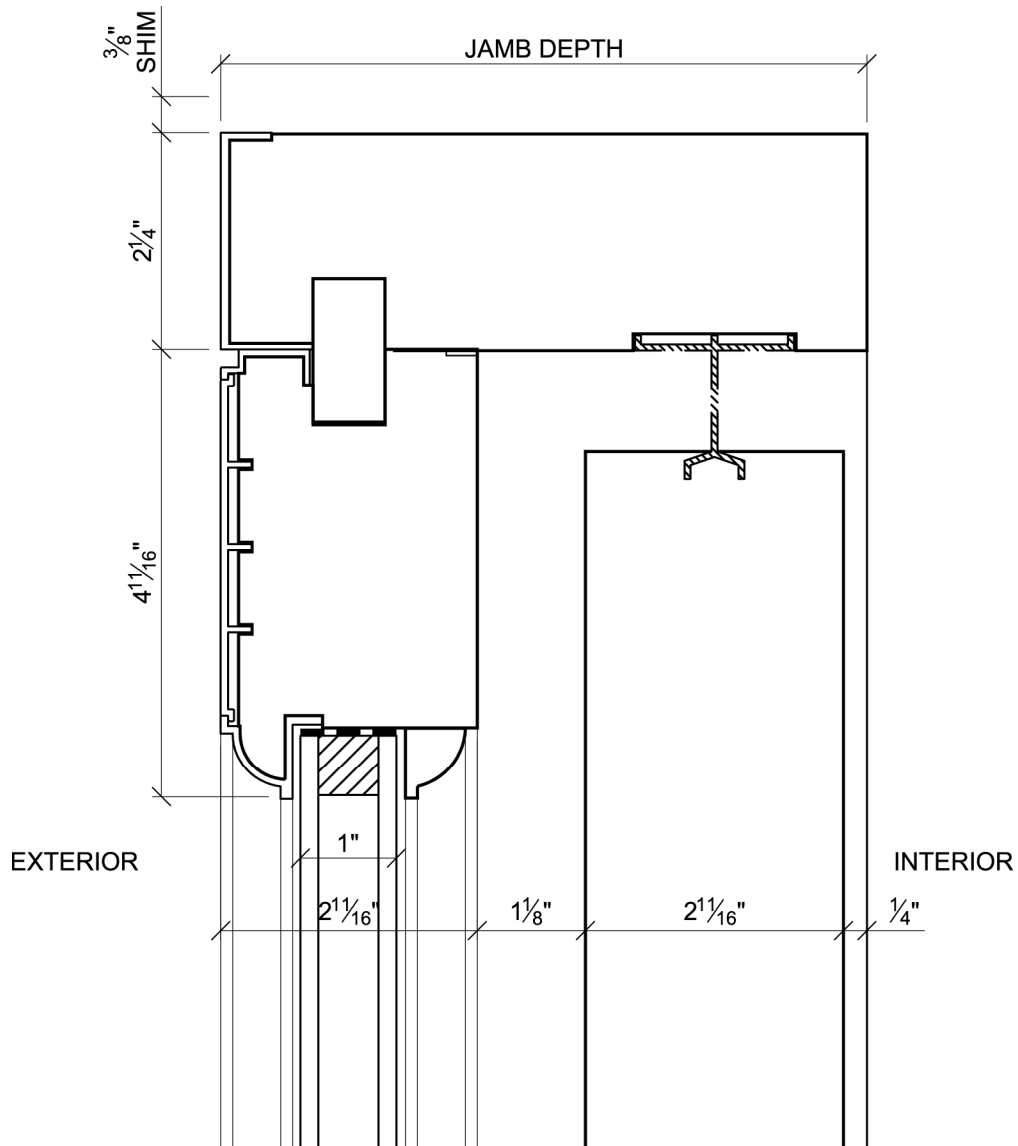




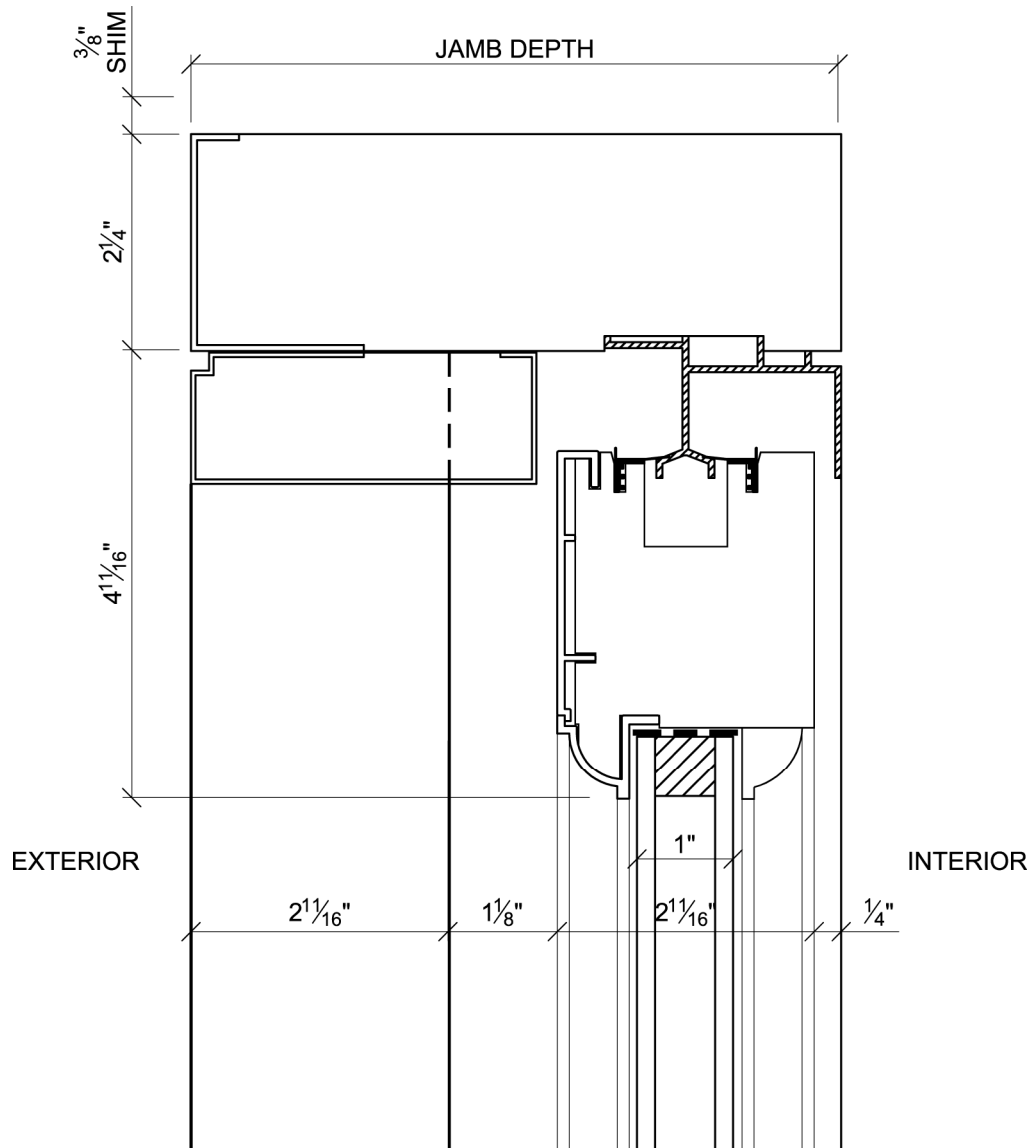
# OXXO (Flush): Plan Section



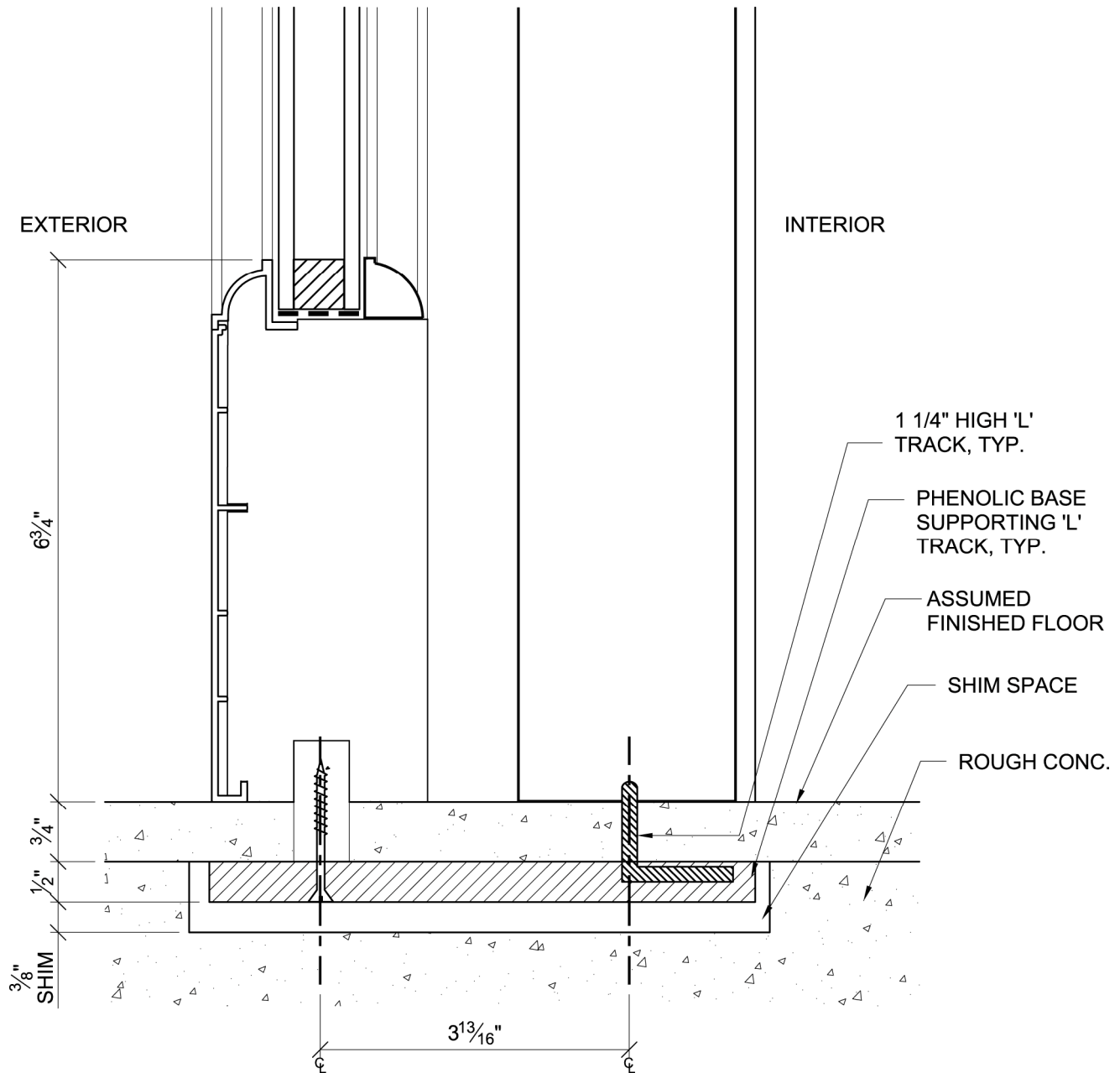
# OXXO (Flush): Head Detail at Fixed Panel



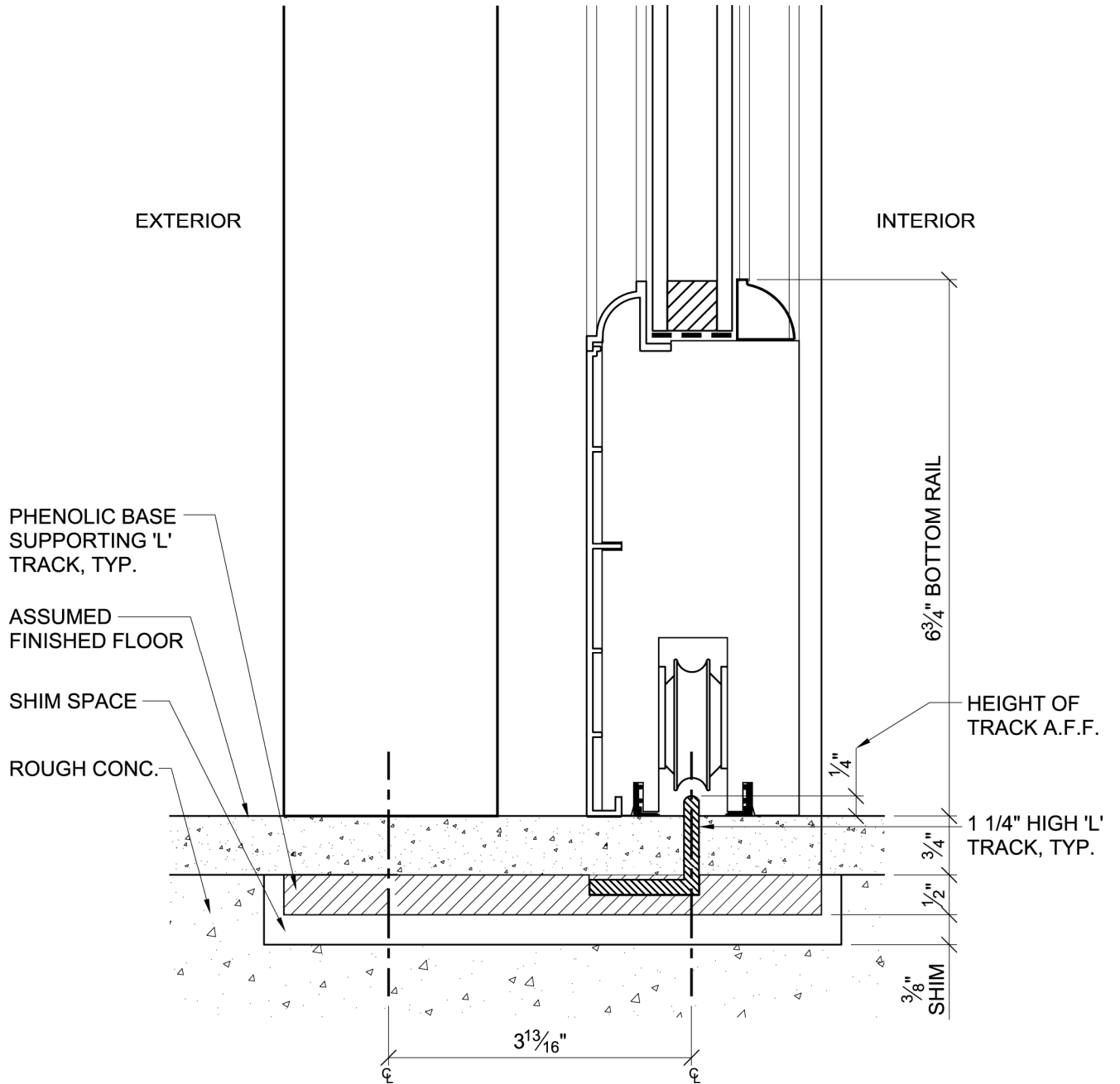
# OXXO (Flush): Head Detail at Active Panel



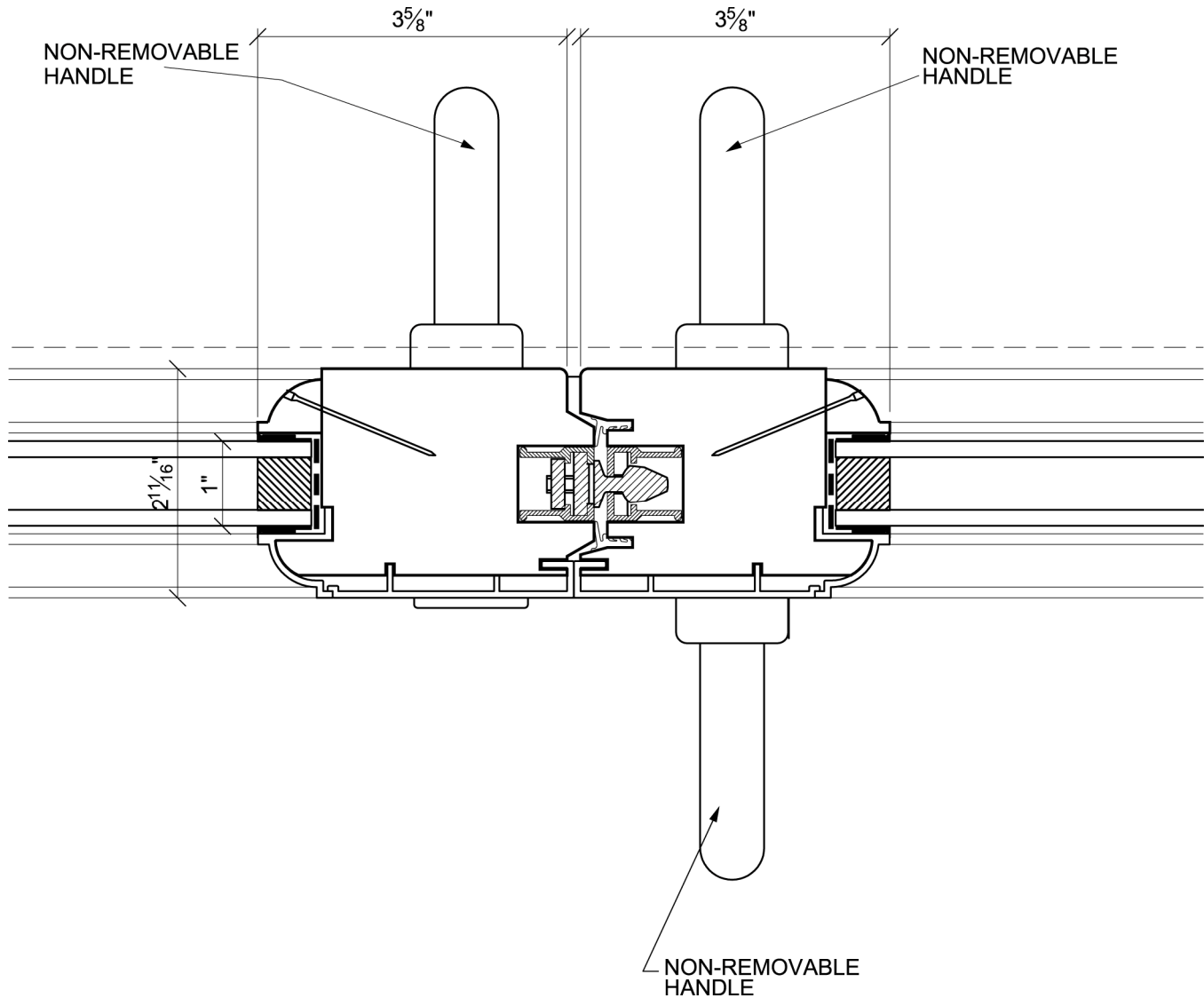
# OXXO (Flush): Sill Detail at Fixed Panel



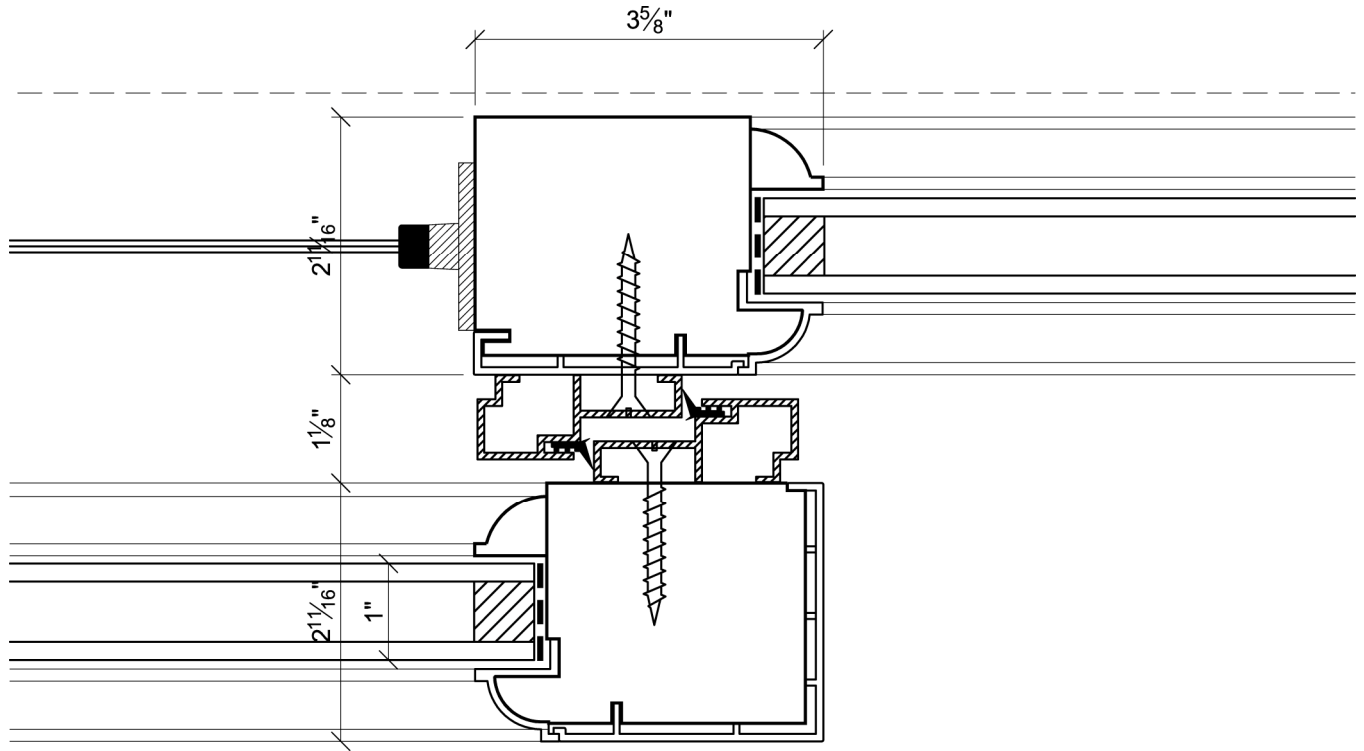
**OXXO (Flush): Sill Detail at Active Panel**



# OXXO (Flush): Meeting Stiles Detail



# OXXO (Flush): Interlocker Detail



# OXXO (Flush): Jamb Detail at Fixed Panel

