

CHIPPERFIELD PEDESTAL LAVATORY, KIT# 24228

- Designed by world renowned architect David Chipperfield
- Compact space designed with minimalist flair
- Coordinates with Chipperfield faucet series
- Available in 8" CTC only
- Rear overflow and open back pedestal
- Available in white only
- Made in England

Kit Components:

- 20228** Lavatory slab with faucet holes on 8" (203mm) centers (for spread lavatory faucet only)
- 21220** Pedestal base only

Nominal Dimensions:

19-3/4" x 18-7/8" x 34" (502 x 479 x 864mm)

Backside of the pedestal open from top of pedestal to floor

Bowl Inside Dimensions:

17-1/4" (438mm) wide

12-3/4" (324mm) front to back

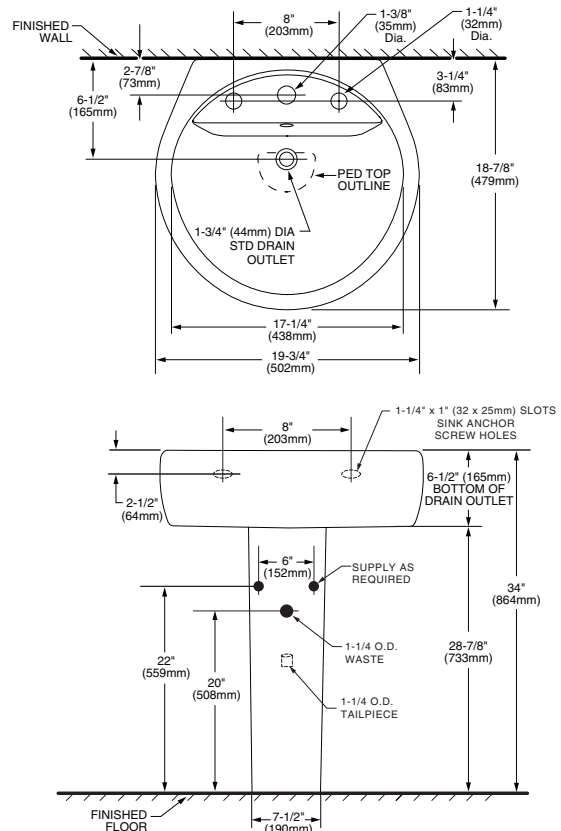
4-3/4" (121mm) depth

To Be Specified

- Faucet:
- Faucet Finish:
- Supplies:
- 1-1/4" Trap:
- Nipple:



Shown with Chipperfield widespread faucet (5120.801)



NOTES:

- ★ DIMENSIONS SHOWN FOR LOCATION OF SUPPLIES AND "P" TRAP ARE SUGGESTED.
- FOR REINFORCEMENT ONLY. TAKE ACTUAL DIMENSIONS FROM FIXTURE.
- SLAB/PEDESTAL ANCHORS AND MOUNTING FEATURES TO BE FURNISHED BY OTHERS.
- PROVIDE SUITABLE REINFORCEMENT FOR ALL WALL SUPPORTS.
- FITTINGS NOT INCLUDED AND MUST BE ORDERED SEPARATELY.
- INSTALLATION INSTRUCTIONS SUPPLIED WITH LAVATORY.

IMPORTANT: Dimensions of fixtures are nominal and may vary within the range of tolerances. These measurements are subject to change or cancellation. No responsibility is assumed for use of superseded or voided pages.