

DAVIS

W E B B TM

C H A I R

S E R I E S



Designed by Burkhard Vogtherr

T H E

W E B B

C H A I R

F R O M

D A V I S

New age comfort and styling converges with traditional Shaker craftsmanship in the Webb Series, an innovative seating collection conceptualized by German furniture designer Burkhard Vogtherr. The traditional woven tape technique, first used by the Shakers in the 1830's, produces an interesting geometric pattern while providing outstanding comfort that is highly individualized. This American method of upholstery is combined with the clean sculptural detailing of a polished aluminum frame and the supple hand of leather...*the result is a timeless statement in contemporary seating.*





Webb 1-CH
WB-Black Webbing / Chrome Finish



Webb 2-CH
WB-Grey Webbing / Chrome Finish

WEBBING TECHNOLOGY

The flexible woven back is constructed of a special webbing tape developed with DuPont for the Webb Chair Series. The body of the tape is composed of two-ply polyester yarn chosen for resistance to staining and abrasion, cleanability, ease of dyeing, and colorfastness. The elastomer component (DuPont LYCRA® spandex) is wrapped with the polyester and adds superior, long term performance and resilience. This combination of materials conforms with the user's movements in a new way that attains the highest level of comfort.

shown at right:
Webb 2-BL
WB-Natural Webbing / Black Finish
WB-UPHA Optional Upholstered Arm





Webb 2-CH
WB-Black Webbing / Chrome Finish

shown with
TAO Collection — TA-798-CH Conference Table
1000 Beech / Chrome Finish



The Webb Chair Series is an elegant complement to any contemporary conference room, providing individualized comfort with extreme visual interest.

FORM WITH FUNCTION

In addition to the executive *swivel* chairs, Davis has incorporated this webbing technology in the *short* and *long back side* chairs. These guest chairs provide a dramatic design statement that once again offers comfort and function.



Webb 3-CH
WB-Black Webbing / Chrome Finish
WB-UPHAC Optional Upholstered Arm Cap



Webb 4-CH
WB-Black Webbing / Chrome Finish

shown at right:
Webb 4-CH
WB-Black Webbing / Chrome Finish



SELECTIONS

Four styles are available — *high* and *mid back executive swivel* chairs, and *short* and *long back side* chairs. Each chair style may be specified in six metal finishes — **Chrome (-CH)** - base and arms in chrome with main housing and column in black, or in overall Powdercoate Finishes - **Black (-BL)**, **Silver (-SI)**, **Matte Black (-MB)**, **Matte Silver (-MS)**, **Textured Black (-TB)**, and **Textured Silver (-TS)**. The webbing is available in nine webbing colors with matching leather, contrasting leather, or fabric on seat, head rest, and upholstered arms (where applicable).



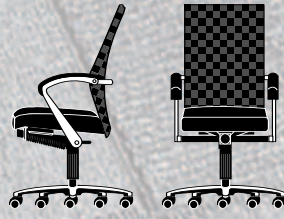
Webb 4-CH
WB-Black Webbing / Chrome Finish /
WB-UPHAC Optional Upholstered Arm Cap

shown with
TAO Collection — TA-770-CH Conference Table
1000 Beech / Chrome Finish

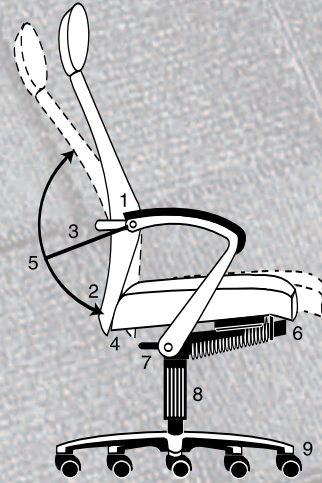
WEBB SERIES OVERVIEW



Webb 1
High Back Executive
25³/₈W 27D 46 - 49¹/₂H



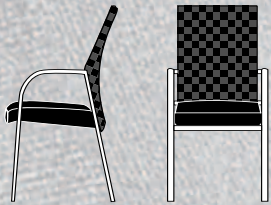
Webb 2
Mid Back Executive
25³/₈W 27D 39 - 42¹/₂H



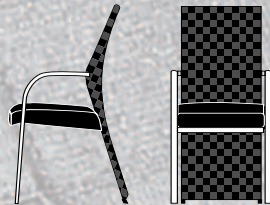
PASSIVE ERGONOMIC MECHANISM

Key:

- 1 Top Pivot Point
- 2 Hinge Pivot Point (forward position)
- 3 Radius of Recline
- 4 Hinge Pivot Point (movement position)
- 5 Pivot Arc
- 6 Tension Adjustment
- 7 Seat Lock (user's left) and Height Adjustment Lever (user's right)
- 8 Gas Cylinder
- 9 Five-prong Base with Dual Wheel Casters



Webb 3
Short Back Side
22⁷/₁₆W 23³/₄D 37¹/₂H



Webb 4
Long Back Side
22⁷/₁₆W 24³/₄D 38¹/₂H

WEBBING SELECTIONS



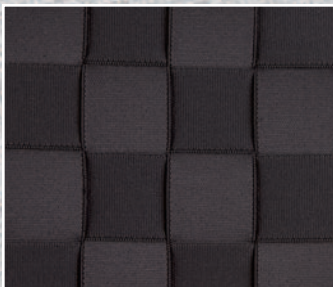
WB-Natural



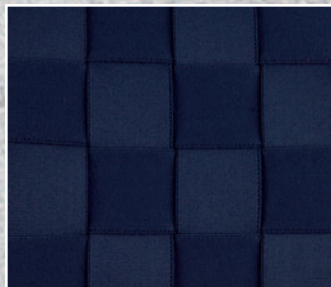
WB-Dove



WB-Candy Red



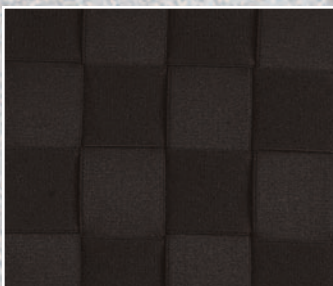
WB-Grey



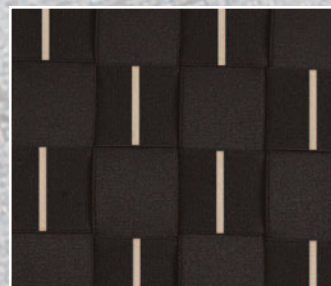
WB-Royal



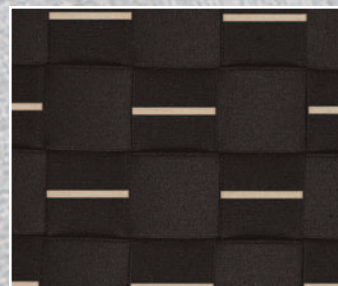
WB-Coco



WB-Black



WB-Stripe (vertical)



WB-Stripe (horizontal)

DAVIS

D a v i s Furniture Industries, Inc.

2401 South College Drive
PO Box 2065
High Point, NC 27261-2065

TEL 3 3 6 8 8 9 2 0 0 9
FAX 3 3 6 8 8 9 0 0 3 1
mail@davisfurniture.com
www.davisfurniture.com

Designed by Burkhard Vogtherr

