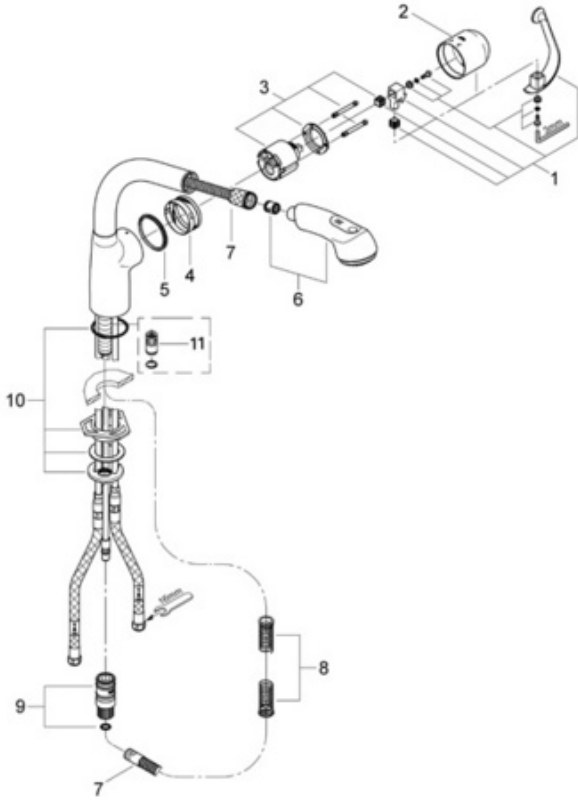


# Ladylux Plus 33 737

## Dual Spray Pull-Out

### Exploded View



### Parts Breakdown

| Pos No.                    | Spare Part Description | Product No. | Pcs. |
|----------------------------|------------------------|-------------|------|
| <b>33 737</b>              |                        |             |      |
| 1                          | Lever handle           | 46 309      | 1    |
| 2                          | Cap                    | 46 311      | 1    |
| 3                          | Ceramic cartridge      | 46 048      | 1    |
| 4                          | Guide ring             | 05 380      | 1    |
| 5                          | Slip ring              | 04 954      | 1    |
| 6                          | Hand held spray        | 46 298      | 1    |
| 7                          | Spray hose             | 46 092      | 1    |
| 8                          | Pressure spring        | 07 240      | 1    |
| 9                          | Quick coupling         | 46 315      | 1    |
| 10                         | Mounting kit           | 46 345      | 1    |
| 11                         | Vacuum breaker         | 46 137      | 1    |
| (for models prior to 2006) |                        |             |      |
| <b>Special Accessories</b> |                        |             |      |
|                            | 10" Euro escutcheon    | 07 552      | 1    |