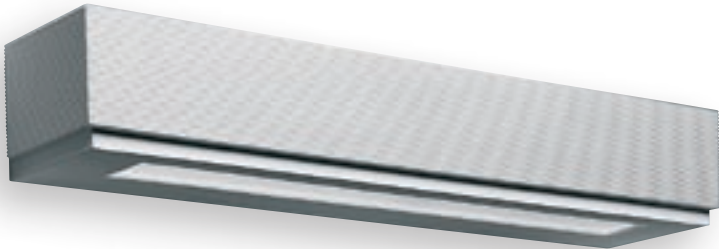


APWS-121.01

Collins

Designer - SEDAP

- MW
- SW
- RD
- BL
- OL
- EB
- SG
- SM
- PG
- PM
- CG
- CM



• **Mounting**

Wall mount on horizontal J-Box (2x4)

• **Material**

Fibre Reinforced Plaster™ and Protective Glass

• **Lamp type** (lamp not included)

 x 1
FT36W 2G11 RS
Compact Fluorescent, Long Twin T5, 4-Pin

 x 1
FT55W 2G11
Compact Fluorescent, Long Twin T5, 4-Pin

• **Voltage and Ballast**

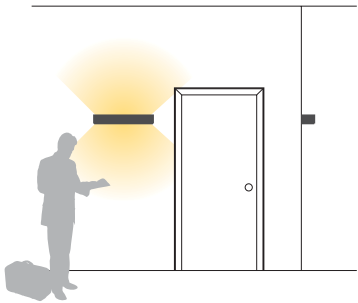
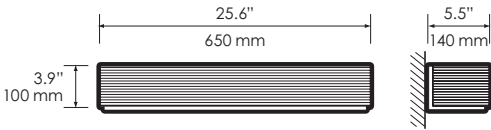
- All our fluorescent lighting fixtures are available in 120 or 277 Volts
- All our ballasts are electronic and are less than 10% THD
- For 347 Volt ballast, please consult the factory
- For electronic dimming ballast, please consult the factory

• **Dimensions** (Length x Height x Depth)



25.6" x 3.9" x 5.5"

• **Weight**

12.7 lbs.



HOW TO SPECIFY

SERIES	MODEL#	LAMP TYPE	VOLTAGE	FINISH
APWS	121.01	➔ _____	➔ _____	➔ _____
		 FT36W T5	120 = 120 Volts	<div>MW = MATTE WHITE</div> <div>SW = SATIN WHITE</div> <div>RD = RED</div> <div>BL = BLUE</div> <div>OL = OLIVE</div> <div>EB = EBONY</div> <div>SG = SILVER GLOSS</div> <div>SM = SILVER MATTE</div> <div>PG = PLATINUM GLOSS</div> <div>PM = PLATINUM MATTE</div> <div>CG = COPPER GLOSS</div> <div>CM = COPPER MATTE</div>
		 FT55W T5	277 = 277 Volts	
Architectural Plaster Wall Sconce				