

CONSTRUCTION

- A** Cap - Made of a cast aluminium part. The cap is fully gasketed and is removable via set screws for easy access to the lamp and ballast.
- B** Housing - Made of one piece cast aluminium and has an hexagonal cross-section.
- C** Anchor plate - Made of one piece moulded aluminium. The bolt circle of the plate is Ø4 1/2" (114 mm) and receives three Ø1/2" by 12" long (13 mm by 305 mm) anchor bolts.

OPTICS

- D** Lens - Composed of six panels sealed to the housing. The lens is made of acrylic and is offered in opal, clear or prismatic finish.

ELECTRICAL COMPONENTS

- E** Ballast - Easily accessible, the ballast is mounted on a removable heavy gauge galvanized steel tray, is equipped with a quick disconnect wiring system and is factory pre wired and tested. It has a high power-factor of 90% or more and is either CWA, CWI, HX, or reactor type. All electrical components are CSA and UL approved.
- Electronic ballast - Easily accessible, the ballast is mounted on a removable heavy gauge galvanized steel tray, is equipped with a quick disconnect wiring system and is factory pre wired and tested. It has a high power-factor and is of high frequency electronic type. All electrical components are CSA and UL approved.
- F** Socket - Made of porcelain, medium base and 4KV pulse rated (lamp not included).
- Socket - Made of injection moulded plastic, of GX24q type for lamp PL-T with four pins (lamp not included).

FINISH

- All surfaces are chemically treated against corrosion through a multi-stage immersion process. The polyester powder finish is applied by a thermostatic process offering an excellent protection conforming to ASTM G7, D-2247 and B-117/D-1654 standards. Standard colours are black, bronze and white with a textured finish. Consult SDL's "Colour Selection Guide" for others.

OPTIONS

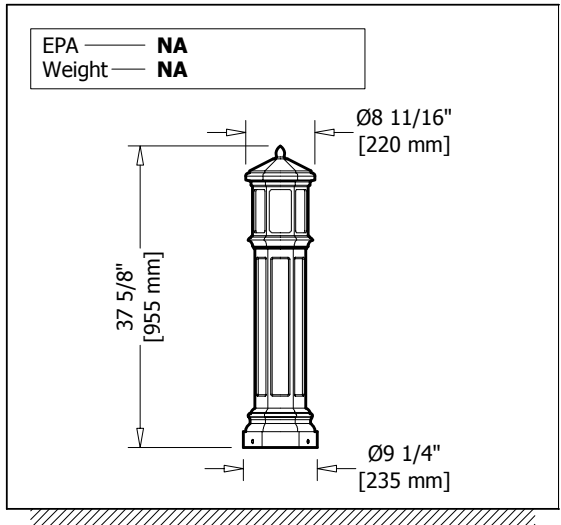
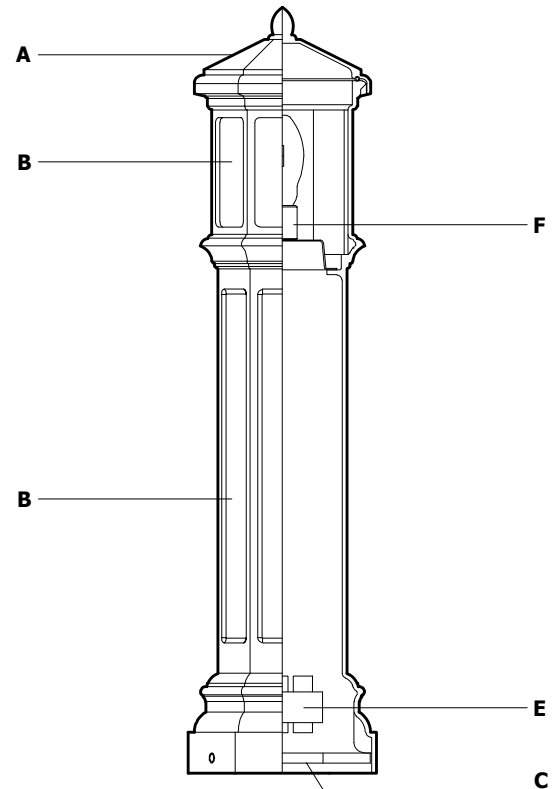
- Duplex receptacle - Consists of an articulated lid and a receptacle made of moulded aluminium. The lid closes on a neoprene gasket to seal it. A ground fault version is also available.
- Tamper-proof hardware - Made of stainless steel, provided with matching bit.
- Deflector - Offered in option, made of specular aluminium and redirects annoying light beams.

HARDWARE

- All exterior hardware is made of stainless steel.

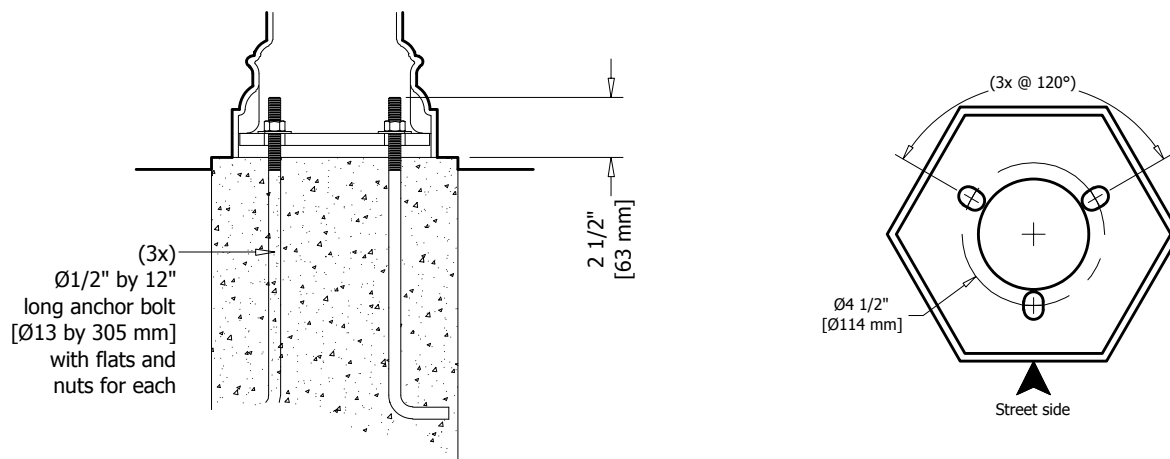
WARRANTY

- This product has a three year warranty on the finish and against any manufacturing defect. The ballast and its components are covered by the manufacturer's warranty.



Type	Quantity	Model	Distribution	Wattage	Voltage	Colour	Other components
<input type="text"/>	<input type="text"/>	<input type="text"/>	<input type="text"/>	<input type="text"/>	<input type="text"/>	<input type="text"/>	<input type="text"/>
Submitted on <input type="text"/> for <input type="checkbox"/> Information <input type="checkbox"/> Approval				Project <input type="text"/>			
Socket <input type="checkbox"/> Medium <input type="checkbox"/> Mogul <input type="checkbox"/>				Distributor <input type="text"/>			
Other(s) <input type="text"/>				Your order # <input type="text"/>			
				Representative <input type="text"/>			
				Our order # <input type="text"/>			

- Assembly detail(s) -



- Specification guide -

Distribution	Wattage	Voltage	Colour	Other components
Symmetric S	MH pulse start 50P <input type="checkbox"/> 70P <input type="checkbox"/> 100P <input type="checkbox"/> HPS 35S <input type="checkbox"/> 50S <input type="checkbox"/> 70S <input type="checkbox"/> 100S <input type="checkbox"/> Fluorescent 26F <input type="checkbox"/> 32F <input type="checkbox"/> 42F <input type="checkbox"/> Medium socket only	120 <input type="checkbox"/> 208 <input type="checkbox"/> 240 <input type="checkbox"/> 277 <input type="checkbox"/> 347 <input type="checkbox"/>	Standard Colours Textured black A11 <input type="checkbox"/> Textured bronze B11 <input type="checkbox"/> Textured white C11 <input type="checkbox"/> Special Colours Textured beige D11 <input type="checkbox"/> Silver E10 <input type="checkbox"/> Silver charcoal E20 <input type="checkbox"/> Textured grey blue G11 <input type="checkbox"/> Textured blue H11 <input type="checkbox"/> Textured dark blue H21 <input type="checkbox"/> Textured dark turquoise J11 <input type="checkbox"/> Textured turquoise J21 <input type="checkbox"/> Textured forest green K11 <input type="checkbox"/> Textured dark forest green K21 <input type="checkbox"/> Textured dark green K31 <input type="checkbox"/> Fine textured dark green K42 <input type="checkbox"/> Textured red M11 <input type="checkbox"/> Textured burgundy M21 <input type="checkbox"/> Fine textured patina X11 <input type="checkbox"/> Custom colour CC ★ <input type="checkbox"/>	Compulsory lens options Clear c/w refractor CL <input type="checkbox"/> Opal acrylic OA <input type="checkbox"/> Prismatic MG <input type="checkbox"/> Optional Duplex receptacle DR <input type="checkbox"/> Ground fault duplex receptacle DRG <input type="checkbox"/> Tamper-proof hardware TP <input type="checkbox"/> House side cut-off HS <input type="checkbox"/>

- Use a PL-T 4 pin lamp. Supplied GX24q type socket and electronic ballast with starting temperature of -18°C.
- ★ Consult manufacturer

IMPORTANT NOTICE
 Éclairage SDL inc. disclaims any responsibility for problems that could occur from a combination of third party products with those of Éclairage SDL inc.

Order example — **3290** - **S** - **70P** - **120** - **A11** - **CL/DR/TP/HS**
 Model Distribution Wattage Voltage Colour Other components