

## CONSTRUCTION

- A** Head - Consists of an upper frame and a collar all moulded of 356 aluminium alloy. The assembly is assembled by means of threaded rods and by four Ø1/2" (13 mm) extruded aluminium tubes in order to offer a good protection to the lens. This layout wedges the lens between gaskets of high-strength EPDM that ensure weatherproofing of the bollard and prevent dust from infiltrating. The assembly is surmounted by a heavy gauge spun aluminium dome.
- B** Louvre - Made of a laser cut out part of very heavy gauge aluminium alloy.
- C** Base - Consists of an aluminium extrusion, with a round section of Ø4" (102 mm) and welded to the anchor plate.
- D** Base-cover - Consists of two moulded aluminium parts mechanically held to the base. The base cover dissimulates the anchor plate.
- E** Anchor plate - Made of one piece moulded aluminium. The bolt circle of the plate is Ø6" (152 mm) and receives three Ø1/2" by 12" long (13 mm by 305 mm) anchor bolts.

## OPTICS

- F** Fresnel lens - Made of heat resistant borosilicate glass and provides a symmetrical distribution.

## ELECTRICAL COMPONENTS

- G** Ballast - Easily accessible, the ballast is mounted on a removable heavy gauge galvanized steel tray, is equipped with a quick disconnect wiring system and is factory pre wired and tested. It has a high power-factor of 90% or more and is either CWA, CWI, HX, or reactor type. All electrical components are CSA and UL approved.
- Electronic ballast - Easily accessible, the ballast is mounted on a removable heavy gauge galvanized steel tray, is equipped with a quick disconnect wiring system and is factory pre wired and tested. It has a high power-factor and is of high frequency electronic type. All electrical components are CSA and UL approved.
  - Socket - Made of porcelain, medium base and 4KV pulse rated (lamp not included).
  - Socket - Made of injection moulded plastic, of GX24q type for lamp PL-T with four pins (lamp not included).

## FINISH

- All surfaces are chemically treated against corrosion through a multi-stage immersion process. The polyester powder finish is applied by a thermostatic process offering an excellent protection conforming to ASTM G7, D-2247 and B-117/D-1654 standards. Standard colours are black, bronze and white with a textured finish. Consult SDL's "Colour Selection Guide" for others.

## OPTIONS

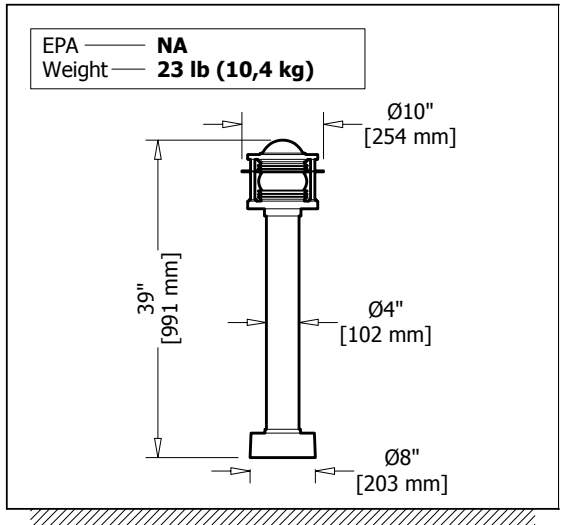
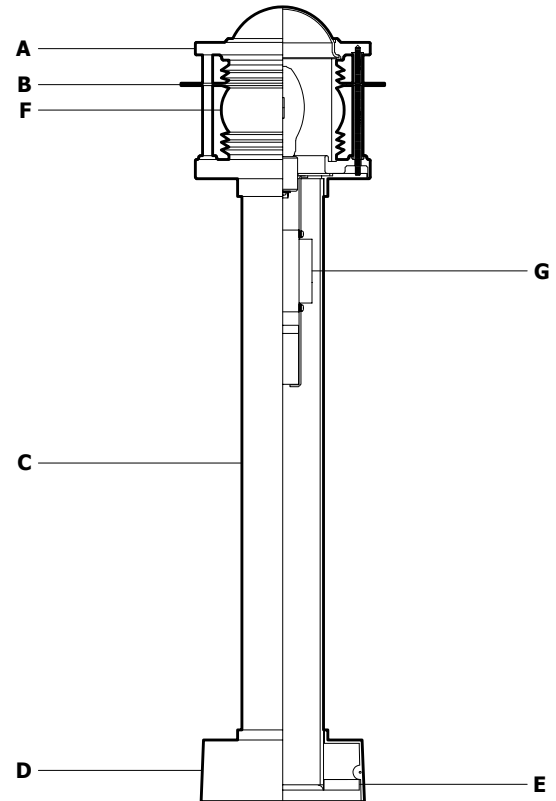
- Duplex receptacle - Consists of an articulated lid and a receptacle made of moulded aluminium. The lid closes on a neoprene gasket to seal it. A ground fault version is also available.
- Tamper-proof hardware - Made of stainless steel, provided with matching bit.
- Deflector - Offered in option, made of specular aluminium and redirects annoying light beams.

## HARDWARE

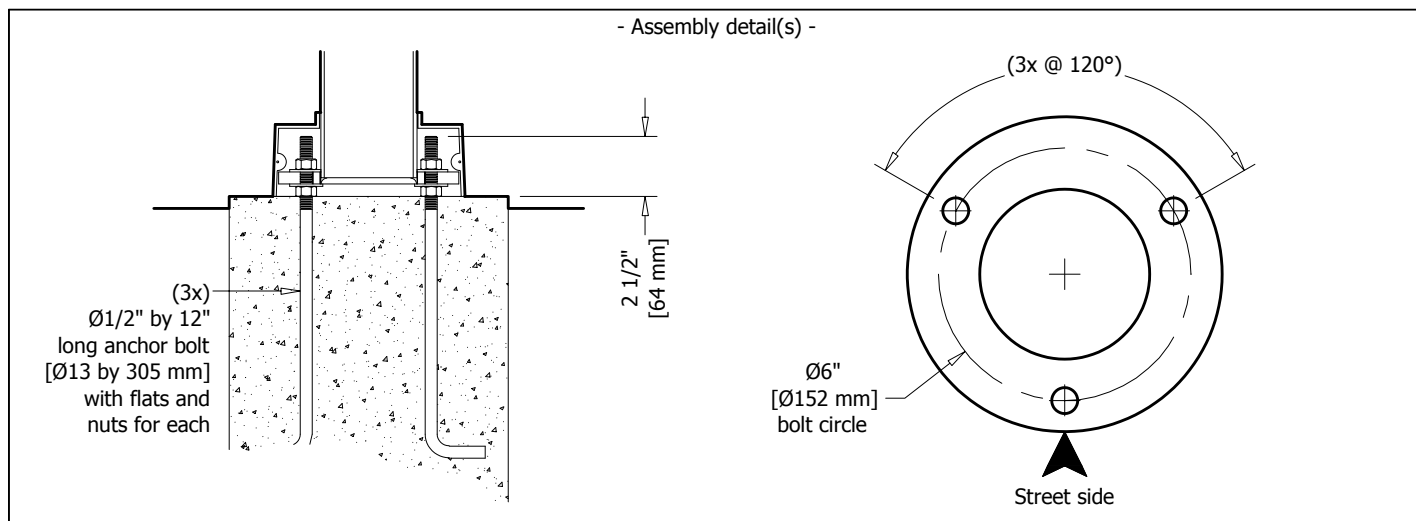
- All exterior hardware is made of stainless steel.

## WARRANTY

- This product has a three year warranty on the finish and against any manufacturing defect. The ballast and its components are covered by the manufacturer's warranty.



Type	Quantity	Model	Distribution	Wattage	Voltage	Colour	Other components
<input type="text"/>	<input type="text"/>	<input type="text"/>	<input type="text"/>	<input type="text"/>	<input type="text"/>	<input type="text"/>	<input type="text"/>
Submitted on <input type="text"/> for <input type="checkbox"/> Information <input type="checkbox"/> Approval				Project <input type="text"/>			
Socket <input type="checkbox"/> Medium <input type="checkbox"/> Mogul <input type="checkbox"/>				Distributor <input type="text"/>			
Other(s) <input type="text"/>				Your order # <input type="text"/>			
				Representative <input type="text"/>			
				Our order # <input type="text"/>			



- Specification guide -

Distribution	Wattage	Voltage	Colour	Other components
Symmetric  <b>S</b>	MH pulse start <b>50P</b> <input type="checkbox"/> <b>70P</b> <input type="checkbox"/>  HPS <b>35S</b> <input type="checkbox"/> <b>50S</b> <input type="checkbox"/> <b>70S</b> <input type="checkbox"/>  Fluorescent <b>26F</b> <input type="checkbox"/> <b>32F</b> <input type="checkbox"/> <b>42F</b> <input type="checkbox"/>  Medium socket only	<b>120</b> <input type="checkbox"/> <b>208</b> <input type="checkbox"/> <b>240</b> <input type="checkbox"/> <b>277</b> <input type="checkbox"/> <b>347</b> <input type="checkbox"/>	Standard Colours Textured black <b>A11</b> <input type="checkbox"/> Textured bronze <b>B11</b> <input type="checkbox"/> Textured white <b>C11</b> <input type="checkbox"/>  Special Colours Textured beige <b>D11</b> <input type="checkbox"/> Silver <b>E10</b> <input type="checkbox"/> Silver charcoal <b>E20</b> <input type="checkbox"/> Textured grey blue <b>G11</b> <input type="checkbox"/> Textured blue <b>H11</b> <input type="checkbox"/> Textured dark blue <b>H21</b> <input type="checkbox"/> Textured dark turquoise <b>J11</b> <input type="checkbox"/> Textured turquoise <b>J21</b> <input type="checkbox"/> Textured forest green <b>K11</b> <input type="checkbox"/> Textured dark forest green <b>K21</b> <input type="checkbox"/> Textured dark green <b>K31</b> <input type="checkbox"/> Fine textured dark green <b>K42</b> <input type="checkbox"/> Textured red <b>M11</b> <input type="checkbox"/> Textured burgundy <b>M21</b> <input type="checkbox"/> Fine textured patina <b>X11</b> <input type="checkbox"/> Custom colour <b>CC</b> ★ <input type="checkbox"/>	Optional Duplex receptacle <b>DR</b> <input type="checkbox"/>  Ground fault duplex receptacle <b>DRG</b> <input type="checkbox"/>  Tamper-proof hardware <b>TP</b> <input type="checkbox"/>  House side cut-off <b>HS</b> <input type="checkbox"/>

**Recommendation  
for MH**  
Using a coated lamp

- Use a PL-T 4 pin lamp. Supplied GX24q type socket and electronic ballast with starting temperature of -18°C.
- ★ Consult manufacturer

**IMPORTANT NOTICE**

Éclairage SDL inc. disclaims any responsibility for problems that could occur from a combination of third party products with those of Éclairage SDL inc.

Order example	<b>3280</b>	-	<b>S</b>	-	<b>70P</b>	-	<b>120</b>	-	<b>A11</b>	-	<b>DR/TP/HS</b>
	Model		Distribution		Wattage		Voltage		Colour		Other components

440 avenue des Cordillères, suite 101, Québec (Québec) Canada G1C 5C4 - Tel.: (418) 664-0999 - Fax: (418) 664-0816 - Internet: [sdllighting.com](http://sdllighting.com)

Éclairage SDL inc. reserves the right to modify the characteristics of its products without prior notification. Éclairage SDL inc. is not responsible for the choice of the lamps. Éclairage SDL inc. will only commence production upon receiving this drawing approved. Annotations to the approved drawing may change pricing and delay.